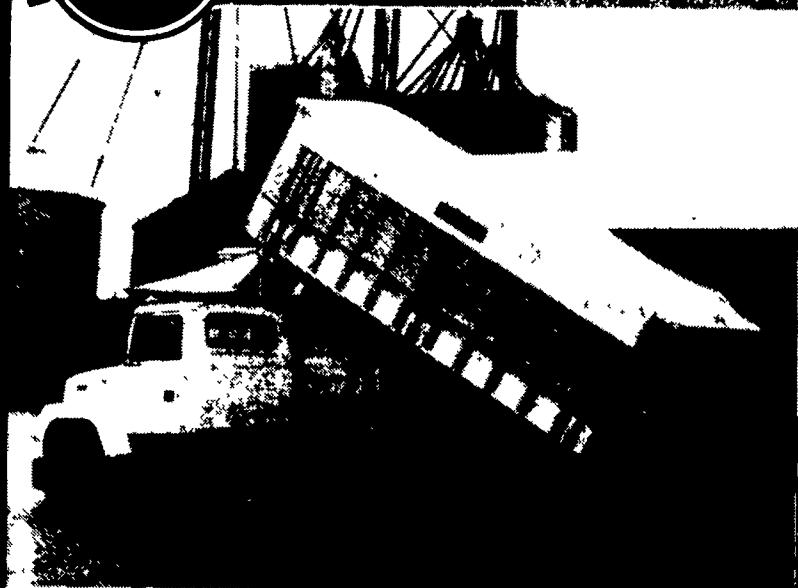



EBY



CONSTRUCTED FOR YEARS OF MAINTENANCE-FREE SERVICE.

Look over these outstanding features.

- **Less weight.** Eby aluminum bodies weigh up to 30% less than comparable steel and wood construction.
- **Less maintenance.** Aluminum construction won't rust or rot - never needs painting.
- **Long-life durability.** Heavy-duty structural components and hollow-tube frame combine with aluminum floor and sides to stand up to years of hard work.

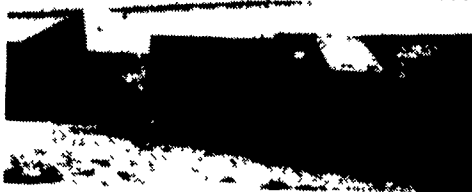
Distributor for 

For more information or prices, call us in Blue Ball, PA at:

(800) 292-4752

M.H. EBY, INC.

P.O. Box 127 Blue Ball, PA 17506
(717) 354-4971



1984 350

6.9 Diesel, Clean, Low Mileage
\$5500.00
12 Ft. Dump Trailer \$2000.00
Will Separate If You Want To
717-530-1773

- 1990 Chevy Beauville Maxi Van, 12 Pass., 350 V8, AT, Dual AC, Loaded, Maroon, 73,000 Mi. **\$10,800**
1989 Ford Thunderbird 2 Dr., V6, AT, Loaded, Blue, 24,000 Mi. **\$8,900**
1988 Chevy Cavalier 4 Dr., 4 Cyl., AT AC, AM-FM, White, 67,000 Mi. **\$3,900**
1988 Lincoln Continental Signature Series 4 Dr., V6, AT, Loaded, Brown, 82,000 Mi. **\$7,900**
1988 Chevy Corsica LT 4 Dr., V6, AT, Loaded, Black, 59,000 Mi. **\$5,900**
1987 Ford Tempo GL 4 Dr., 4 Cyl., AT, AC, AM-FM, Blue, 47,000 Mi. **\$4,200**
1987 Peugeot 505 STX 4 Dr., V6, AT, Loaded, Sunroof, Maroon, 64,000 Mi. **\$5,900**
1987 Honda Accord DX 4 Dr., 4 Cyl. 5 Spd, CR, Tilt, AM-FM Cass., Blue, 56,000 Mi. **\$6,900**
1986 Chevy S10 Blazer 4x4 V6, 5 Spd, AC, AM-FM Black, 75,000 Mi. **\$5,900**
1986 Chevy Camaro Z28 V8, 5 Spd., Loaded, T-Tops, Red, 76,000 Mi. **\$5,600**
1986 Chevy 30 Silverado, 4 Dr., Dually, 454 V8, AT, Loaded, Black, 100,000 Mi. **\$7,900**

Brubaker's Auto Sales
Myerstown, PA
717-866-5237

Lancaster Farming, Saturday, August 8, 1992-C35

35 TRUCKS & TRAILERS

Mack R600 Single Axle, 237-5 Speed, Power Steering, Jake, Lots of Chrome, Excellent Condition
Muvall 42' All Hydraulic Farm Equipment Trailer w/Hydraulic Park Stands, Winch, Side Extensions & Hydraulic Beaver Tail, Excellent Condition
717/265-9014

TRAILER HITCHES & ACCESSORIES - Wholesale Outlet -

Heavy Duty Truck Hitches, Vans, 4x4's, Motor Homes
Class III Hitches Most **\$59.95**
Class IV Hitches Most **\$82.95**
Made in U.S.A.

Chrome Trailer Balls	7"	\$22.00	PINTLE MOUNT	BALL MOUNTS
1 7/8"	\$4.40	12"	\$36.00	2" to 10" Drop
2"	\$4.50			\$12.00 & Up
2 5/16"	\$8.00			

BOX HITCH **\$21.00**
GOOSENECK HIDE-AWAY BOX **\$89.95**
Weight Distributing Hitches Complete **\$199 + Ball**
From **\$55.00**

UNIVERSAL PINTLE HITCH **\$42.00**
16,000 GVW

CALL OR FAX YOUR ORDER TODAY!
Thousands Of Parts In Stock - Buy Below Dealer Costs U.P.S. C.O.D. Shipments Only
Call For Free "Full" Price List

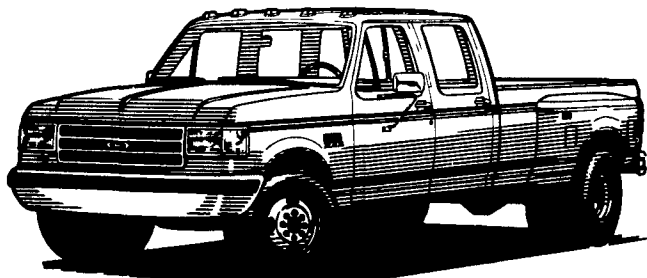
GSI Services

215-536-6333 Fax 215-536-8437

Mark VII - Pickups - Broncos - Bronco II - Stake Body - Crew Cab -

'92 FORD CREW CABS

Now In Stock & Ready To Go!



'92 FORD F-150 PICKUP (#3648)
Delivered Price **\$9,999**
List **\$12,037**



'91 FORD F-350 C&C (#7499)
Delivered Price **\$11,836**
List **\$15,743**



Hurry! Last One In Stock!

1992 FORD CONVERSION VANS ARE HERE!



Many To Choose From!

Hi-Top And Low-Top In Stock.

Prices include applicable rebates plus \$500 cash or trade. Tax, tags and doc fees additional. Payments at 10.9% APR for 60 Months.



'87 FORD RANGER 4x4
V6, AT, AC, AM/FM, Cass, Body and Suspension Lift, #3548B
Was \$10,998
NOW **\$8,488**



'86 CHEVY EL CAMINO
V8, AT, AC, PW, Tilt, Cruise, 54,000 Mi.
Was \$8,495
NOW **\$7,998**



'88 FORD BRONCO 4x4
XLT, 30L, V8, AT, AC, Loaded, 50,000 Miles #P1357
Was \$12,998
NOW **\$12,611**



'87 FORD RANGER XLT
4 Cyl., AT, PS, PB, #P1360
Was \$6,998
NOW **\$6,411**



'89 FORD RANGER 4x4
4 Cyl., 5 Speed, PS, PB, #3310A
Was \$8,498
NOW **\$7,998**



'88 FORD F-150 4x4
6 Cyl., 4 Spd, PS, PB, Cass #3747A
Was \$9,998
NOW **\$9,377**



'91 FORD F-150 4x4
6 Cyl., 5 Spd., AC, Tilt/ Cruise #P1368
Was \$14,998
NOW **\$14,555**



'91 NISSAN EXT. CAB 4x4
With Snow Plow, 6 Cyl., 5 Spd., 2900 Mi. #3643H
Was \$14,998
NOW **\$13,998**



'86 FORD AEROSTAR XLT
V6, AT, Dual AC, Cassette, Loaded #3767A
Was \$8,998
NOW **\$8,722**

Unless This Emblem Is On Your Car Or Truck You Probably Paid Too Much

SHEEHY LEBANON

SHEEHY FORD LINCOLN MERCURY INC.
20th & Cumberland St., Lebanon

Parts Dept. Open
Daily 8-5
Sat. 8-12
717-273-8168

9-9 Daily
9-5 Sat.
717-272-7671



Tempo - Cougar - Continental - Town Car - 4x4 - Box Van - Rangers -

Custom Vans

XLT

Grand Marquis

Marquis

Lynx - Topaz - Diesel Pickups - Mustang - T Bird