

(800) 533-3837

YOUR DIRECT LINE TO GENUINE GM PARTS

When you call the number listed above you'll reach our wholesale parts specialists, who can help you keep your GM repair work moving quickly. Ask About:

- Specializing in GM Medium Duty Trucks, Current and Obsolete.
- \$500,000 Parts Inventory
- Parts Locator For Those Hard To Find Items
- We Ship Anywhere. Local Delivery Available.
- Experienced, Knowledgeable Personnel.

LEFEVER BROS.
DILLSBURG

(717) 432-9697

Quality Dealer Since 1921
406 U.S. Route 15 • Dillsburg, PA 17019



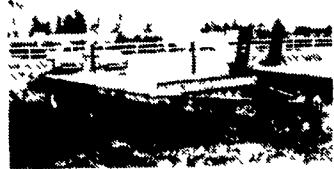
Mr. Goodwrench

USED TRUCKS



1985 Ford E350 16 Passenger Bus, Dual Air, Dual Heat, 460 V8, Auto, Crome Bud Wheels, Radio, Dual Tanks, Current Inspection, Runs Good.

\$7,900



1979 General 3 Axle Tag-A-Long Trailer, 24,000 GVW, 15' Flat Ramps, 3' Beavertail.

\$1,999



1992 New 5 Ton Tag-A-Long, All Wheel Brakes, Adjustable Hitch, Adjustable Ramps, 16' Bed, Or 18' Bed Available.

\$1,995

REDUCED TO SELL



1988 Chev. Suburban-Silverado- 4x4; 350 EFI, Privacy Glass- Running Boards, Auto, CC, Pdl., RWD, Dual Air, Tilt, AM-FM Cassette, PW, 2 Captains Chairs, 8 Passenger Seating, 2 Tone Blue, 75-K Miles, New Inspection.

\$10,800

A GREAT BUY



Oliver 1950 GM Diesel, 4 Wheel Drive, ROPS, PTO, No 3 Point, Runs Fair, Last Year, 1974.

\$3,999



1985 Honda Accord LX, 5 Speed, PS, PB, Air, AM-FM Cassette, Current Inspection, Charcoal Grey, 93K Miles, Dependable, Choose From 2

Each **\$3,999**



1979 Ford F600 Bucket Truck, 31' Reach, V8 Gas, New Paint, Works Good, Choice Of 2.

\$6,900



90 GMC Topkick, 2,000 Mi., 16' Flatbed w/Dump, Like New Cond.

\$19,999



King Gooseneck Trailer, BUD Wheels, 30,000 GVW, 24' Flat, 4' Beavertail Ramps, 8' Wide.

\$3,999

HOURS:

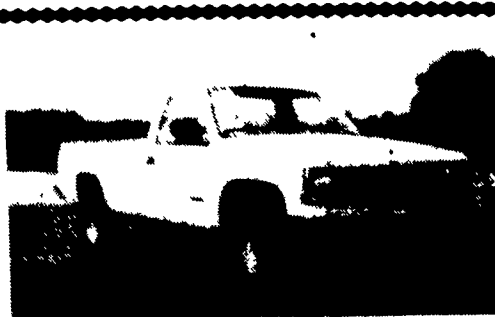
MON-FRI 7:30 To 5:00
SAT 7:30 To NOON

WENGLERS INC.

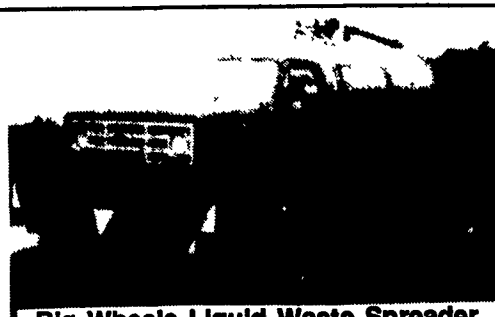
251 SOUTH RACE STREET, MYERSTOWN, PA. 17067
PH: 717-866-2130 FAX 717-866-4300

REFRIGERATED TRUCKS

for Sale/Lease 14-22 Ft Boxes
Can Be Used For Cold Storage
Inside or Outside
201-663-0243



1988 Chevy 3500 Series, V8, AT, PS, PB, 8600 GVW, 34,000 Miles, Like New
\$6,995
717-865-3488



Big Wheels Liquid Waste Spreader
1977 GMC - 427 V8 Engine, Automatic Transmission, 1600 gallon tank capacity, very good condition
Big Wheels Liquid Waste Spreader
1979 GMC - 53 Detroit Diesel Engine Automatic Transmission, 1600 gallon capacity, injection system, vacuum pump -very good condition
Call 717-745-7144 anytime!!!



P.O. Box 322 • Main Street
Schaefferstown, PA 17088
(717) 949-6513 FAX #949-3936

1991 Ford Ranger XLT 4x4 Blue/Silver, 17,850 Miles, V6, Auto, Tilt, Cruise, AM-FM Cass. **\$10,900**

1991 Chevrolet S-10 Durango, Red, 26,417 Miles, 4.3 V6, Auto, AC **\$8,900**

1990 Ford Centurion F350 XLT Lariat 4x4, 2 To Choose From
Call For Details

1989 Ford E350 Maxi Cargo Van, White, 67,825 Miles, 7.3 Diesel, Auto, AC, AM-FM Stereo, Dual Fuel Tanks **\$8,400**

1989 Dodge Ram 350 Maxi Van, White, 30,291 Miles, V8, Auto, AC, AM-FM Stereo, 15 Passenger **\$9,800**

1990 Dodge Ram 250 4x4, Cab & Chassis, Blue 98,000 Miles, Cummins Turbo Diesel, 5 Spd, PS, PB **\$8,900**

1989 Dodge Ram 250 Maxi Hi-Top Conv. Van, Black, 37,588 Miles, 318 V8, Auto, Dual AC, CC, Tilt PW, Pdl, AM-FM Cass. .. **\$12,900**

1988 Ford Bronco, Eddie Bauer, Blue/Tan, 58,219 Miles, 302 V8, 5 Spd., AC, CC, Tilt, PW, Pdl, AM-FM Cass. **\$10,900**

1987 Ford F250 XL 4x4, 8600 GVW, Blue, 39,485 Miles, 351, V8, Auto, PS, PB, AM-FM Stereo **\$9,900**

1986 Ford F150 4x4, Blue/Grey, 79,187 Miles, 300, 6 Cyl., Auto **\$3,900**

R & R CAR AND TRUCK CENTER



85 GMC 7000, 366 GM Gas, 5 Spd, PS, Hyd. Brakes, 23,500 GVW, 14' C&C New Insp. Call For Details

84 FORD F350 12' STAKE, 351 Gas, 4 Spd., PS, PB, New Tires, Very Clean. Selling Price \$5,900



ALSO: Storage Trailers, Sale or Rent

CALL RAY LEED:
(717) 560-4901

KEENS SERVICES INC.

Trailers

• Sales
• Service
• Rentals
• Leasing
Litz, PA
(717) 626-5420
"Since 1963"

1 Mile East Of The Lancaster Airport

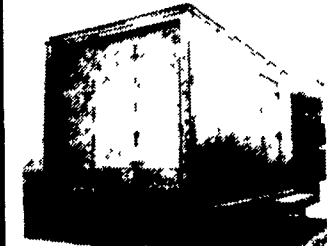
Trailers For Sale



1990 WALKING FLOOR TRAILER, Kentucky 45'x13', Halco Floor, Slider, Roll Tarp, 11R 24.5 Disk **\$28,500**



1987 Mack Super Liner Model RW613 "Liberty Edition" **LOADED!** Mack 350, Jake Brake, Mack 9-Speed Model T2090 38# R.A., PS, AC, Air Ride Cab, Wheel Base 219", 24.5 Radials, 90%, New Brakes, 42" Sleeper



SEVERAL STORAGE BOXES AVAILABLE

ALSO AVAILABLE:

1985 Hobbs 48'x96"x13'6". Swing doors. Lo Pro 24.5 disk, slider, **EXCELLENT CONDITION**

1972 Fruehauf Dropeck Flat 40', top deck 10", drop 23", Height 38", 8.25R x 15 spoke. Tires 70% Brakes 50% \$4,250
2) 1988 Trailmobile Flats 48'x96", Slider, 11R 24.5 on disk, **READY TO GO!**

REFRIGERATED TRAILERS for Road and storage use - Diesel & electric available.

5) 48'x102" Vans, \$6500-\$7500 Excellent Condition - State Inspected and Ready To Go!

CALL US TODAY!