

Central U.S.
Carlot
 Pork Report
 July 22, 1992
 Report supplied by USDA
 CENTRAL U.S. CARLOT PORK REPORT FOB OMAHA BASIS INCLUDES MAJOR PRODUCTION AREAS IN MIDWEST AS OF 3 P.M. COMPARED TUESDAY'S 3:00 P.M. CLOSE: FRESH PORK LOINS NOT TESTED; BUTTS 1.00 LOWER IN VERY THIN TEST; SKND. HAMS 17-20 LBS. STEADY, 20-26 LBS. 1.50-2.00 LOWER; BELLIES STEADY TO MOSTLY 3.00 LOWER. MARKET ACTIVITY VERY SLOW TO SLOW WITH, LIGHT TO MODERATE DEMAND AND SUPPLIES.
 NOTE: 1 LD. 17-20 LBS. SELECTED HAMS TRADED 70.00 SHIPPING 7/22/92 FOR DELIVERY 7/24/92.
 59.0 LOADS PORK CUTS
 24.5 LOADS TRIM/PROCESS PORK CUTS
 LOINS, REG., FRESH
 14-18 LBS., * RANGE 105.00-112.00, WGHTD. AVG. 107.55 A.
 1/2" TRIM 14-18 LBS., RANGE 121.00-131.00, WGHTD. AVG. 125.77 A.
 18-22 LBS. * RANGE 107.00, WGHTD. AVG. 107.00 A.
 1/2" TRIM 18-22 LBS., RANGE 128.00, WGHTD. AVG. 128.00 A.
 COMBOS 22/UP LBS., RANGE 68.00, WGHTD. AVG. 68.00 A.
 LOIN, BLS CTRCT 5-7 LBS.
 RANGE 228.00-246.00, WGHTD. AVG. 239.71 E.
 BNLS SIRLOIN .75-1 LB.
 RANGE 165.00, WGHTD. AVG. 165.00 A.
 PICNIC, FRESH (COMBOS) FOR SMOKER TRIM, RS
 5.0 LOADS, RANGE 46.00-49.00, WGHTD. AVG. 46.60.
 BOSTON BUTT
 4-8 LBS. *, 1.5 LOADS, RANGE 69.00-73.00, WGHTD. AVG. 70.33.
 1/2" TRIM 4-8 LBS., 1.5 LOADS, RANGE 90.00-94.00, WGHTD. AVG. 91.33.
 COMBOS, RANGE 53.00, WGHTD. AVG. 53.00 B.
 SPARERIB, FRESH
 1.5-3.5 LBS., 3.5 LOADS, RANGE 100.00-103.00, WGHTD. AVG. 100.43.
 3.5-5.5 LBS., RANGE 92.00, WGHTD. AVG. 92.00 D.
 SPARERIB, FROZEN
 1.5-3.5 LBS., 1.0 LOADS, RANGE 101.25, WGHTD. AVG. 101.25

LOIN BACKRIB (COMBOS)
 FRSH/FRZN 1.75/DN LBS.
 RANGE 203.00, WGHTD. AVG. 203.00 D.
 HAM, SKINNED, SELECTED
 FRESH 17-20 LBS., 16.0 LOADS, RANGE 64.00-66.00, WGHTD. AVG. 65.44.
 FRESH 20-26 LBS., 8.0 LOADS, RANGE 66.50-68.00, WGHTD. AVG. 67.25.
 HAM, SKINNED, COMMODITY
 FRESH 14-17 LBS., RANGE 63.00, WGHTD. AVG. 63.00 B.
 FRESH 17-20 LBS., RANGE 63.00, WGHTD. AVG. 63.00 A.
 FRESH 20-26 LBS., RANGE 63.00-64.00, WGHTD. AVG. 63.30 A.
 FRESH 32 LBS. AND UP, 4.0 LOADS, RANGE 60.00-61.00, WGHTD. AVG. 60.75.
BELLY, SDLS SKIN-ON, FRESH
 FRESH 10-12 LBS., 1.0 LOADS, RANGE 30.00, WGHTD. AVG. 30.00.
 FRESH 12-14 LBS., 7.0 LOADS, RANGE 31.00-34.00, WGHTD. AVG. 31.57.
 FRESH 14-16 LBS., 11.0 LOADS, RANGE 30.00-34.00, WGHTD. AVG. 31.09.
 FRESH 16-18 LBS., RANGE 30.00, WGHTD. AVG. 30.00 A.
 FRESH 18-20 LBS., 0.5 LOADS, RANGE 26.00, WGHTD. ASVG. 26.00.
 FRESH 20-25 LBS., 0.5 LOADS, RANGE 24.00, WGHTD. AVG. 24.00.
PORK TRIMMINGS/ BONELESS PROCESSING PORK (CHEMICAL LEAN)
 COMBO 42% FRESH, 2.5 LOADS, RANGE 20.00-22.00, WGHTD. AVG. 20.40.
 COMBO 72% FRESH, 10.0 LOADS, RANGE 50.00, WGHTD. AVG. 50.00.
 BOXED 72% FROZEN, 1.0 LOADS, RANGE 56.50, WGHTD. AVG. 56.50
PICNIC CUSHION MEAT
 COMBO 92% FRESH, RANGE 113.00, WGHTD. AVG. 113.00 A.
BONELESS PICNIC MEAT
 COMBO 72% FRESH, 8.0 LOADS, RANGE 51.00, WGHTD. AVG. 51.00.
SHANK MEAT
 FROZEN, 3.0 LOADS, RANGE 59.00-60.00, WGHTD. AVG. 59.67.
SKINNED JOWLS
 COMBO FRESH, RANGE 19.00, WGHTD. AVG. 19.00 D.
 BOXED FROZEN, RANGE 21.00, WGHTD. AVG. 21.00 A.
 NOTE! (*) REFLECTS 1/2" TRIMMED PRODUCT BROUGHT BACK TO A

Under Federal Inspection
 July 22, 1992

| | CATTLE | CALVES | HOGS | SHEEP |
|---------------------|---------|--------|---------|--------|
| WEDNESDAY (EST) | 118,000 | 5,000 | 344,000 | 19,000 |
| WEEK AGO (EST) | 124,000 | 5,000 | 344,000 | 19,000 |
| YEAR AGO (ACT) | 123,000 | 5,000 | 282,000 | 16,000 |
| WEEK TO DATE (EST) | 350,000 | 14,000 | 955,000 | 54,000 |
| SAME PD LT WK (EST) | 370,000 | 14,000 | 975,000 | 54,000 |
| SAME PD LT YR (ACT) | 346,000 | 15,000 | 854,000 | 55,000 |

PREVIOUS DAY ESTIMATED TUESDAY STEER AND HEIFER 94,000; COW AND BULL 21,000.

REGULAR COMMODITY BASIS.
 ABCDE AFTER QUOTES REPRESENTS DAYS SINCE LAST ACTUAL MARKET TEST. QUOTES ARE DROPPED AFTER 5 DAYS OF NO TEST OR BEFORE IF THEY NO LONGER REFLECT CURRENT MARKET CONDITIONS.

PORK CARCASS CUTOUT WED., JULY 22

ESTIMATED GROSS CUTOUT VALUES OF A 175 LB. HOG CARCASS BASED ON USDA CUTTING YIELD TESTS AND CARLOT PRICES. WEDNESDAY'S CARCASS GRADES & PRICES PER CWT.:

US #1 62.43, CHANGE FROM TUES.'S VALUE -0.85; US#2 60.32, CHANGE FROM TUE. VALUE -0.84; US#3 58.20, CHANGE FROM TUE. -0.83; US#4 56.09, CHANGE FROM TUE. -0.82.

TODAY'S CALCULATIONS FOR US #2 175 LB. PORK CARCASS:
 HAM, SKINNED, 14-20 LBS., 21.01% OF CARCASS, 66.00 FOB VALUE; LOINS, 1/2" TRIM, 14-22 LBS., 20.33% OF CARCASS, 125.00 FOB VALUE.

BELLIES, SDLS, 12-14 LBS., 13.90% OF CARCASS, 32.00 FOB VALUE, CHANGE FROM TUES. -2.00; SPARERIBS, 3.5DN LBS., 3.03% OF CARCASS, 100.00 FOB VALUE, CHANGE FROM TUES. -3.00.

PICNICS, 8-12 LBS., 10.31% OF CARCASS, 34.68 FOB VALUE, CHANGE FROM TUES. -3.57; BUTTS, 1/2" TRIM, 4-8 LBS., 7.25% OF CARCASS, 90.50 FOB VALUE.

JOWL, 2.85% OF CARCASS, 19.00 FOB VALUE; NECKBONES, 1.52% OF CARCASS, 11.00 FOB VALUE.

FEET, 1.05% OF CARCASS, 9.50 FOB VALUE; TAILS, 0.22% OF CARCASS,

FOB VALUE 14.00.

TRIM 72%, 2.19% OF CARCASS, 50.00 FOB VALUE, CHANGE FROM TUES. -4.50; LARD 10.85% OF CARCASS, 13.75 FOB VALUE.

TOTAL CARCASS 94.51%. US#2 CARCASS VALUE PER CWT. 60.32. NOTE: VALUE MAY CHANGE WITHOUT ADEQUATE TEST.

Belleville Livestock Auction BELLEVILLE, PA

July 22, 1992

CATTLE 98...Supplied by the auction...One Select steer at 70.00, couple Standard 57.00-59.50. Breaking Utility and Commercial slaughter cows 47.50-51.00, Cutter and Boning Utility 45.00-48.50, Canner and low Cutter 41.00-44.85, Shells down to 36.00. Feeder Cattle steers 65.00-71.50, heifY..j 58.00-63.00, bulls 57.25-62.00.

CALVES 101...Standard and Good vealers 65.00-70.00, Utility 55.00-65.00. FARM CALVES: No. 2 Holstein Bulls 135.00-162.50, Holstein heifers No. 1 140.00-170.00.

HOGS 185...US No.1-2 230/250 lbs. barrows and gilts 43.50-44.35, 1-3 200/280 lbs. 42.00-43.35. Sows: 1-3 31.75-34.00, 2-3 22.00-31.50. Boars 22.00-29.50.

FEEDER PIGS 235...US 1-3 35/40 lbs. feeder pigs 25.00-32.00, 25/35 lbs. 15.00-25.00, 15/25 lbs. 10.00-18.00... all per head.

SHEEP 28...High Choice and Prime slaughter Lambs 58.00-62.00, Choice 50.00-58.00, Good 40.00-52.00. Slaughter ewes 25.00-42.00. --- all cwt.

GOATS 13...Large 28.00-60.00. --- all per head.

Livestock Auction DEWART, PA

July 20, 1992

CATTLE 77...PDA...Compared with last weeks market: Few Choice sl. steers 1125/1150 lbs. 72.50-73.00. Few Breaking Utility and Commercial sl. cows 47.50-49.00, Cutter and Boning Utility 47.75-49.50, Canner and Low Cutter 42.50-46.75, Shells down to 39.25. One Yield Grade No. 1, 1970 lbs. bull 55.00.

CALVES 169...One Choice vealer 100.00, Standard and Good 70/95 lbs. sl. calves 60.00-70.00. FARM CALVES: No. 1, 85/130 lbs. Holstein bulls 125.00-145.00, No. 2, 80/125 lbs. 90.00-120.00; No. 1, 80/120 lbs. Holstein heifers 155.00-200.00. Few Beef cross 75/115 lbs. bulls and heifers 110.00-140.00.

HOGS 48...BARROWS & GILTS: Few lots US 1-3 245/255 lbs. 41.00-41.85, lgt 1-3 200 lbs. 40.50. US 1-3 350/600 lbs. sows 30.00-32.50. Few Boars 26.50-30.00. FEEDER PIGS 87...US 1-3 30/50 lbs. 17.00-25.00. --- all per head.

SHEEP 11...Few Good and Choice 55/95 lbs. Spring sl. lambs 50.00-61.00. GOATS 0...No market test.

Isennock Auction

New Park, PA

July 21, 1992

Report supplied by auction

SLAUGHTER COWS: 49.00 & DOWN, 1 AT 54.00.

HEIFERS: 845-1014 LBS. 60.00-66.00. FEEDER BULLS: 310-570 LBS. 54.00-70.00.

FEEDER STEERS: HOLSTEIN X 190-470 LBS. 52.00-75.00.

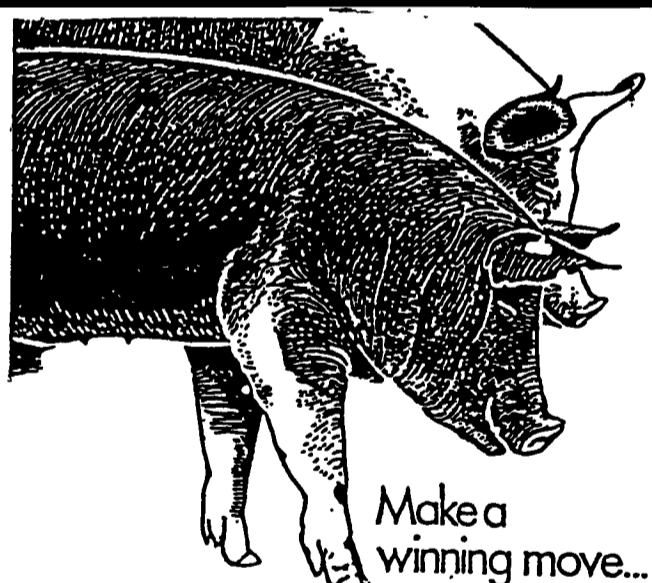
FARM CALVES: 140-225 LBS. 73.00-80.00; 110-120 LBS. 124.00-137.00; 95-105 LBS. 100.00-137.00; 80-90 LBS. 105.00-115.00; 70-75 LBS. 70.00-75.00; WEAK AND ROUGH 65.00 AND DOWN.

HEIFER CALVES: GOOD 95-125 LBS. 155.00-172.00; 85-120 LBS. 120.00-142.00; OTHERS 75-85 LBS. 80.00-105.00; 160-175 LBS. 75.00-80.00.

GOATS: SMALL 29.00 HEAD. BOARS: YOUNG 155-210 LBS. 25.00-30.50.

SOWS: 400-450 LBS. 30.00-32.00. FEEDER PIGS: 11.00-20.00 HEAD.

SHEEP 160-195 LBS. 20.00-25.00. LAMBS: 45-75 LBS. 40.00-41.00.



Make a winning move...

*** Contract with Purina Mills, Inc. Now accepting new and existing sow herds

We Supply

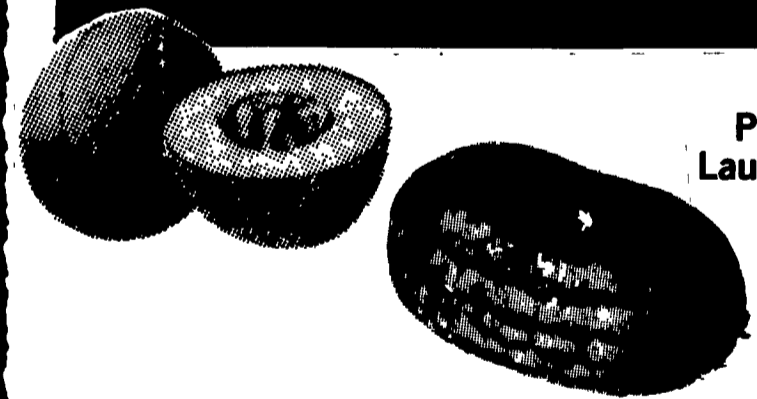
- Quality Purina Feeds
- Sound Genetic Program
- A Service Representative To Assist You
- Competitive Contract Payment

Call Us Today
1-800-873-5300

Purina Mills, Inc.
Serving The Needs Of Agriculture

NOW OPEN FOR OUR 52ND SEASON

LAUREL FARMERS AUCTION MARKET



P.O. Box 633
 Laurel, DE 19956

Marketing Fresh Produce Through Mid-September
Watermelons, Cantaloupes, Sugar Babies, Tomatoes and More
Opening July 16

"No buyer too big or small- Pickup loads to tractor trailer loads sold- Buy your own - No fee for buying No broker needed"

Please call for more information
302-875-3147 302-875-5136