

Greencastle Livestock

Greencastle, Pa.

Monday, July 20, 1992

SLAUGHTER STEERS: 423 HD. TREND: STEADY TO 1.00 LOWER. HIGH CHOICE AND PRIME 2-4 74.00-75.25; CHOICE 2-3 950-1075 LBS. 66.00-72.00; CHOICE 2-3 1075-1375 LBS. 70.00-74.00; CHOICE 2-3 OVER 1375 LBS. 65.00-71.00; CHOICE 4 ALL WEIGHTS 63.00-69.00; SELECT & CHOICE 1-2 950-1100 LBS. 64.00-71.50; SELECT & CHOICE 1-2 1100-1375 LBS. 66.00-70.00; SELECT & CHOICE 1-2 OVER 1375 LBS. 61.00-68.00.
 HOLSTEINS: CHOICE 2-3 1050-1450 LBS. 63.00-68.00; SELECT 1-2 1050-1450 LBS. 58.50-62.50.
 SLAUGHTER HEIFERS: 68 HD. TREND: STEADY TO 1.00 LOWER. CHOICE 2-3 850-1000 LBS. 63.00-70.00; CHOICE 2-3 1000-1250 LBS. 68.00-74.00; CHOICE 4 ALL WEIGHTS 60.00-66.75; SELECT & CHOICE 1-2 850-1000 LBS. 60.00-66.00; SELECT & CHOICE 1-2 1000-1250 LBS. 64.00-69.50.
 HOLSTEINS: CHOICE 2-3 1000-1350 LBS. 57.50-63.50; SELECT & CHOICE 1-2 1000-1350 LBS. 54.00-58.50.
 SLAUGHTER BULLS: 29 HD. TREND: STEADY TO WEAKER. YIELD GRADE 1 ALL WEIGHTS 60.00-67.00; YIELD GRADE 2 ALL WEIGHTS 55.00-59.00.
 BULLOCKS: 12 HEAD. CHOICE 1-3 950-1150 LBS. 58.00-64.50; 1150-1375 LBS. 59.00-66.75; SELECT 1-2 950-1250 LBS. 60.00-68.00.
 COWS: 225 HD. TREND: STEADY TO STRONGER. BREAKING UTILITY & COMMERCIAL 46.00-52.50; CUTTER & BONING UTILITY 48.00-54.50; CANNER & LOW CUTTER 47.00 & DOWN. STOCKER & FEEDER CATTLE RECEIPTS: 109 HD. TREND STEADY. BEEF TYPES: 200-400 LBS. STEERS 80.00-109.00, BULLS 80.00-105.00.

HEIFERS 70.00-86.00; 400-600 LBS. STEERS 80.00-87.00, BULLS 70.00-80.00, HEIFERS 65.00-74.00; 600-800 LBS. STEERS 70.00-84.00, BULLS 60.00-70.00, HEIFERS 61.00-71.00; 800-975 LBS. STEERS 65.00-74.00, BULLS 50.00-59.00, HEIFERS 60.00-66.50.
 HOLSTEINS AND DAIRY CROSS: 200-400 LBS. STEERS 65.00-78.00, BULLS 60.00-72.00, HEIFERS 75.00-125.00; 400-600 LBS. STEERS 56.00-63.00, BULLS 60.00-65.00, HEIFERS 60.00-70.00; 600-800 LBS. STEERS 55.00-65.00, BULLS 54.00-58.00, HEIFERS 60.00-72.00; 800-975 LBS. STEERS 60.00-63.00, BULLS 50.00-59.00, HEIFERS 56.00-66.00.
 CALVES: 713 HD. VEAL CALVES. TREND: STEADY. CHOICE 150-300 LBS. 70.00-105.00; GOOD 150-300 LBS. 85.00-95.00; GOOD 100-150 LBS. 80.00-90.00; GOOD 80-100 LBS. 75.00-85.00; STANDARD 80-100 LBS. 70.00-80.00; STANDARD 80 LBS. & DOWN 70.00-DOWN.
 CALVES RETURNING TO THE FARM: TREND: STEADY. HOLSTEIN BULLS OVER 100 LBS. UP TO 154.00; UNDER 100 LBS. UP TO 155.00; HOLSTEIN HEIFERS OVER 100 LBS. 211.00; UNDER 100 LBS. 190.00; BEEF TYPE BULLS OVER 90 LBS. 160.00; BEEF TYPE HEIFERS OVER 90 LBS. 135.00.
 SHEEP & LAMBS: 85 HD. LAMBS: TREND: STEADY. CHOICE 80-100 LBS. 54.00-57.50; 100-120 LBS. 52.00-56.00; MEDIUM & GOOD ALL WEIGHTS 48.00-55.00; LIGHT LAMBS 55.00-60.00.
 SHEEP: EWES LEAN 20.00-26.50; EWES FAT 14.00-20.00; YEARLINGS 30.00-35.00; BUCKS 15.00-20.00.
 GOATS: 115 HD. SMALL 10.00-28.00; MEDIUM 28.00-54.00; LARGE 55.00-104.00.
 HOGS, SOWS & BOARS: 154 HD. HOGS, BARROWS & GILTS: 210-250 LBS. 41.00-43.00; 250-260 LBS. 40.00-42.00; 260-270 LBS. 40.00-40.50; 270-300 LBS. 35.00-38.00.

LIGHT HOGS: 140-180 LBS. 33.00-35.50; 180-210 LBS. 34.00-39.00.
 SOWS: TREND: STEADY 1.00 LOWER. GOOD SOWS UNDER 400 LBS. 31.00-34.00; GOOD SOWS OVER 400 LBS. 30.00-33.50; CULL SOWS ALL WEIGHTS 29.00 & DOWN.
 BOARS: TREND: 1.00 LOWER. 180-210 LBS. 29.00-34.00; 210-260 LBS. 30.00-33.00; 260-300 LBS. 27.00-30.00; 300 LBS. & OVER 25.00-29.00.
 SALE EVERY MONDAY AT 2:00 P.M. & EVERY THURSDAY AT 1:00 P.M.
 HAY & STRAW SALE EVERY MONDAY & THURSDAY AT 11:30 A.M.
 SPECIAL FEEDER CATTLE SALE: FRIDAY, AUGUST 7, 1992, AT 7:15 P.M.
 SPECIAL FEEDER PIG SALE: SATURDAY, JULY 25, AT 1:00 P.M.

Central U.S. Carlot

Beef Report
 July 22, 1992

Report supplied by USDA

CENTRAL U.S. CARLOT BEEF REPORT (INCLUDES THE MAJOR PRODUCTION AREAS IN THE MIDWEST AND TEXAS) AS OF 3 P.M. COMPARED TO WEDNESDAY'S 3 P.M. REPORT: BREAKING UTILITY CARCASSES STEADY; BONING UTILITY 1.00-3.00 HIGHER THAN LAST TEST; CUTTER GENERALLY STEADY; BULLS STEADY. DEMAND MODERATE FOR LIGHT TO MODERATE OFFERINGS.
 COW AND BULL CARCASSES FOB OMAHA BASIS 28 LOADS REPORTED
 UT, BRK 2-4, 450 & UP, 7 LOADS, RANGE 81.00-83.00, LATEST ESTB. MKT. 81.00-83.00.
 UT, BNG 1-3, 400 & UP, 17 LOADS, RANGE 84.00-87.50, LATEST ESTB. MKT. 85.00-87.50.
 CUTTER 1-2 350 & UP, 3 LOADS,

RANGE 94.00, LATEST ESTB. MKT. 94.00.
 BULLS 500/UP, YG 1, 1 LOAD, RANGE 100.00, LATEST ESTB. MKT. 100.00.
 BONELESS PROCESSING BEEF/ BEEF TRIMMINGS 146 LOADS, REPORTED
 FRESH 90% BONELESS BEEF IN THE MIDWEST, 1.00-2.00 LOWER, AN IN TEXAS 2.00-2.50 LOWER; 85% 1.50 LOWER THAN LAST TEST; 65% STEADY. DEMAND LIGHT TO MODERATE FOR MODERATE OFFERINGS. BEEF TRIMMINGS GENERALLY STEADY ON MOSTLY MODERATE DEMAND AND OFFERINGS.
 FOB OMAHA BASIS
 90% FRESH, 30 LOADS, RANGE 115.0-116.0, WT. AVG. 115.53.
 90% FZ, UNQUOTED.
 85% FRESH, 1 LOAD, RANGE 109.00, WT. AVG. 109.00.
 85% FZ, 75% FR AND 75% FZ, UNQUOTED.
 65% FRESH, 5 LOADS, RANGE 72.0, WT. AVG. 72.00.
 65% FZ, UNQUOTED.
 50% FR, 75 LOADS, RANGE 51.00-52.00, WT. AVG. 51.68.
 50% FZ AND 50% BX, UNQUOTED.
 BULL 92-94, 1 LOAD, RANGE 145.00, WT. ASVG. 145.00.
 FOB EAST TX AND OK:
 90% FR, 25 LOADS, RANGE 116.0-117.0, WT. AVG. 116.34.
 75% FR, 2 LOADS, RANGE 89.5, WT. AVG. 89.50.
 75% FZ, 65% FR AND 65% FZ, UNQUOTED.
 CAF NORTHEAST AREAS:
 90% FR, 6 LOADS, RANGE 117.0-118.0, WT. AVG. 117.67.
 90% FZ, UNQUOTED.
 85% FR, 1 LOAD, RANGE 109.0, WT. AVG. 109.00.
 85% FZ, 75% FR, 75% FZ, 65% FR, 65% FZ, UNQUOTED.
 ABCDE AFTER QUOTES REPRESENTS DAYS SINCE LAST ACTUAL MARKET TEST. QUOTES ARE DROPPED AFTER 5 DAYS OF NO TEST OR BEFORE IF THEY NO LONGER REFLECT CURRENT MARKET CONDITIONS.

Steer and heifer calves steady with exception of high quality calves at Tuesday's special sale as much as \$2.00 higher. Calf trade very active at first special sale of season. Thunderstorms continue to provide good moisture to lush pastures in this trade territory. Slaughter cows steady to \$1.00 higher with advance on Utilities. Slaughter bulls steady to \$1.00 lower. Receipts this week 12,200; last week 11,300; last year 8,921. Supply consisted of 65% yearlings over 600 lbs.; 32% calves; 3% cows and bulls. Bulk prices follow; weighted average prices in parenthesis:
 Feeder Steers: Medium and Large Frame 1, 400-500 lbs. \$98.00-\$106.50 (\$101.40); 500-550 lbs. \$91.00-\$97.50 (\$91.22); 550-600 lbs. \$88.25-\$93.75 (\$91.22); 600-700 lbs. \$83.00-\$92.00 (\$87.51); 700-800 lbs. \$80.00-\$85.50 (\$83.19); 800-900 lbs. \$77.50-\$82.75 (\$80.59); 900-1000 lbs. \$76.75-\$79.50 (\$77.65). Large Frame 2 Holsteins, 450-500 lbs. \$82.00-\$91.00 (\$86.02); 525-600 lbs. \$74.00; 700-800 lbs. \$68.50-\$70.00; 825-900 lbs. \$62.50-\$69.00 (\$65.69).
 Feeder Heifers: Medium and Large Frame 1, 350-400 lbs. \$97.00-\$104.00 (\$98.28); 400-500 lbs. \$87.00-\$95.00 (\$91.14); 500-600 lbs. \$83.00-\$90.00 (\$86.61); 600-700 lbs. \$80.00-\$84.50 (\$83.21); 700-800 lbs. \$77.25-\$81.75 (\$79.43).
 Slaughter Cows: Cutter, Boning and Breaking Utility Y.G. 1-3 average dressing \$46.50-\$50.00; high dressing \$49.50-\$52.50.
 Slaughter Bulls: Y.G. 1 1200-2000 lbs. average dressing \$58.50-\$62.75; high dressing \$63.50-\$65.75; indiv high dressing/high boning Limousin \$66.75. RPM

Belknap Livestock

Dayton, Pa.
 Wednesday, July 15, 1992
 Report Supplied by Auction
 FEEDER PIGS: 30-50 LBS. 77 HEAD 25.00-38.00.
 MARKET HOGS: 230-260 LBS. 222 HEAD 42.00-42.90.
 SOWS: 300-500 LBS. 16 HEAD 31.00-34.00.
 BOARS: 300-500 LBS. 4 HEAD 26.00-28.00.
 LAMBS: 60-80 LBS. 34 HEAD 43.00-50.00.
 SHEEP: 80-120 LBS. 25 HEAD 16.00-21.00.
 HOLSTEIN BULL CALVES: 95-115 LBS. 131 HEAD 135.00-150.00.
 HOLSTEIN HEIFER CALVES: 90-110 LBS. 54 HEAD 140.00-170.00.
 FEEDER CATTLE: 300-500 LBS. 26 HEAD 65.00-82.00.
 BULLS: 1200-1600 LBS. 12 HEAD 59.00-64.50.
 COWS: 1200-1500 LBS. 38 HEAD 44.00-49.50.

Oklahoma City Feeder Cattle

Oklahoma City
 Wednesday July 22, 1992
 Attention Dodge City
 OKLAHOMA NATIONAL STOCKYARDS WEEKLY CATTLE SUMMARY Compared with last week: Yearling steers under 800 lbs. and heifers under 700 lbs. steady; heavier weights steady to \$2.00 lower. Demand only moderate for feeder cattle with buyers more selective for kind and fills than last week. Quality of yearlings average thru attractive but not as consistently good as last week. Cattle carried more flesh and fill than last week.

HAY, STRAW & GRAIN SALE
 Every Thursday at 1 p.m.
 Auction will continue all year long
 Vintage Sales Stables, Inc.
 (Rt. 30, 10 miles east of Lancaster in Paradise, PA)

For Info. L. Robert Frame, Sr. president
 717-442-4181 business
 215-458-8518 home Glenn S. Frame Mgr.

PARADISE CONCRETE
 Since Concrete Is Not An Exact Science, Why Not Let Paradise Take The Guesswork Out Of It! Pay Only For What You Use! No Waste - No Overorder!
 Definitely Call Us Before You Buy!



Dedicated To The Farm Community
 Mitch White Eric R. Probst
717-687-0990

C.B. HOOBER & SON, INC.
 Intercourse, PA
 (717) 768-8231

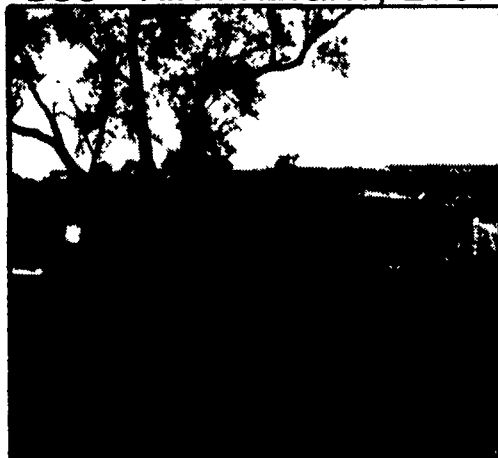
HOOBER
 TWO LOCATIONS

HOOBER EQUIPMENT, INC.
 Middletown, DE
 (302) 378-9555

The Saving Place



WE SHIP PARTS DAILY
 Via FED. EXP. - UPS - PPSH - BUS - AIR FREIGHT, ETC.



FEDERAL EXPRESS

HOURS

Mon.-Fri. 7 AM-5 PM; Sat. 7 AM-Noon

CALL US...

It Could Be We Have It



Authorized UPS Station

UPS

YOU STAY PUT
 Pick Up Your Phone And Place Your Parts Order With Us

A & C Diffenbach Auction Inc.

100 West Jackson Street • Box 186 • New Holland, Pennsylvania 17557
 Office: (717) 355-7253 • FAX: (717) 355-9547

HAY & GRAIN SALE EVERY MONDAY - 10:00 A.M.

TUE.	AUG. 4	WHOLESALE FURNITURE	6:30 P.M.
WED.	AUG. 5	WINROSS TRUCK & FARM TOYS	6:30 P.M.
FRI.	AUG. 7	FARM EQUIPMENT & SUPPLIES	9:00 A.M.
TUES.	AUG. 25	HARVEST EQUIP. & ANTIQUE TRAC.	9:30 A.M.

EQUIPPED FOR AN AUCTION AT YOUR PLACE OR OURS
 ALAN DIFFENBACH AUCT. - AU2258-L

SHREDDED NEWSPAPER FOR ANIMAL BEDDING

NOW AVAILABLE IN YOUR AREA!
 PA, NY, NJ, DE, MD, OH

Cut your straw bedding costs in half.
 Call for delivery

ALTERNATIVE RECYCLING, INC.

127 Seymour St.
 Lancaster, PA 17603

717-393-2777
 717-393-2874