

Aberdeen Sales Company, Inc.
Complete Auction & Appraisal Service
Churchville, Md.

Wednesday, July 22, 1992

SLAUGHTER STEERS: MARKET 50 HIGHER. CHOICE 2-4 1100-1400 LBS. 71.50-74.75; SELECT & LOW CHOICE 1000-1500 LBS. 66.50-72.50; HOL. STEERS HI CHOICE & PRIME 1250-1400 LBS. 65.00-68.00; CHOICE 1200-1500 LBS. 65.00-67.50; SELECT, ALL WEIGHTS 59.00-63.00.

SLAUGHTER HEIFERS: MARKET 1.00 HIGHER. CHOICE & PRIME 950-1300 LBS. 71.00-74.00; SELECT ALL WEIGHTS 900-1400 LBS. 63.50-69.00.

COWS: MARKET 1.50 LOWER. BRK. UT. & COMM. 2-4 BULK 45.00-49.00; HI DRESSING 49.00-53.00; CUTTER & BON. UT. 46.00-49.00; HI DRESSING 49.00-52.00; CANNER & CUTTERS 41.00-45.00; LOW DRESSING 41.00-DOWN.

BULLS: MARKET STEADY. ALL WEIGHTS 1100-1900 LBS. 59.00-68.00.
VEAL CALVES: MARKET 5.00 LOWER. CHOICE AND PRIME 200-400 LBS. 84.00-90.00; HI GOOD AND LOW CHICE ALL WEIGHTS 73.00-81.00.

FARM CALVES: MARKET 6.00 LOWER. HOL. BULLS 100-125 LBS. 118.00-130.00; HOL. BULLS 85-95 LBS. 115.00-145.00; HOL. HEIFER CALVES 100-120 LBS. 140.00-172.00; SMALL FRAME 70-105 LBS. 70.00-110.00; SLAUGHTER CALVES ALL WEIGHTS 65.00-73.00.

FEEDER CATTLE: MARKET STEADY. BULLS & STEERS 400-900 LBS. 68.00-93.00; HEIFERS 300-700 LBS. 63.00-72.00.

LAMBS: MARKET 6.00 LOWER. CHOICE & PRIME 90-110 LBS. 61.00-68.00; LIGHTER LAMBS 59.00-63.00; EWES - HEAVY 15.00-23.00; EWES - LIGHT 25.00-32.00.

GOATS: MARKET STEADY. SMALL 18.00-25.00; MEDIUM 25.00-40.00; LARGE 45.00-90.00.

HOGS: MARKET 3.00 LOWER. 210-250 LBS. 41.00-43.00; 255-300 LBS. 35.00-41.00; SOWS - HEAVY 29.00-32.00; SOWS - LIGHT 24.00-28.00; BOARS ALL WEIGHTS 26.00-30.00.

Four States Livestock

Hagerstown, Md.
July 22, 1992

Report supplied by Auction

SLAUGHTER COWS: 108 HEAD, STEADY PRICES. UTILITY 47.00-50.00; HIGH DRESSING 51.00-53.00; CANNERS 43.00-46.50; SHELLY 42.00 DOWN.

BULLS: YG#1 1200-1500 LBS. 61.50-65.00; YG#2 56.00-59.00.

FED STEERS: HIGH CHOICE TO PRIME 1150-1350 LBS. 74.00-76.50; CHOICE 1000-1200 LBS. 70.00-73.50; SELECT 64.00-70.00.

FED HEIFERS: FEW OFFERED. LOW CHOICE 1100-1300 LBS. 65.00-67.50.

VEAL CALVES: CHOICE 150-275 LBS. 94.00-106.00; GOOD 80.00-93.00; CULLS 85-115 LBS. 63.00-69.00; FEW TO 74.00; 50-80 LBS. 60.00-65.00; WEAK/ROUGH 55.00 DOWN.

FARM CALVES: HOLSTEIN BULLS #1 90-125 LBS. 125.00-145.00; FEW 125-140 LBS. 115.00-130.00; #2 80-110 LBS. 90.00-120.00; HOLSTEIN HEIFERS #1 95-120 LBS. 150.00-172.00; #2 75-95 LBS. 85.00-130.00; BEEF X BULLS AND HEIFERS 100.00-130.00, 1 AT 152.00.
BUTCHER HOGS: FEW OFFERED. US#1&3 215-260 LBS. TO 41.50; 190-210 LBS. TO 36.75; 280-325 LBS. 32.00-34.00.

SOWS: 35 HEAD. 300-500 LBS. 30.00-33.75; 500-700 LBS. 31.00-32.00; THIN 26.00-30.00.

BOARS: 8 HEAD. 350-700 LBS. 28.00-30.25.

STOCK CATTLE: 91 HEAD. STEERS-NO LIGHT WEIGHTS; 400-600 LBS. 77.00-86.00; 600-800 LBS. 68.00-78.00; 800-1000 LBS. 62.00-71.00.

HEIFERS: 300-400 LBS. 75.00-86.00; 500-700 LBS. 62.00-72.00; 700-900 LBS. 58.00-66.00.

BULLS: 200-400 LBS. 80.00-94.00; 400-500 LBS. 65.00-79.00; 600-700 LBS. 59.00-67.00.

DAIRY REPLACEMENTS: LARGE SPRINGERS 1000.00-1225.00; MEDIUM SPRINGERS 800.00-975.00; FEW 150-300 LBS. HOLSTEIN HEIFERS 85.00-105.00.

LAMBS: 60 HEAD. CHOICE 90-115 LBS. 57.00-59.50; 60-90 LBS. 56.00-60.00; GOOD 48.00-56.00.
SHEEP: 19.00-35.00.

GOATS: MEDIUM 40.00-60.00; SMALL 25.00-35.00.

PIGS AND SHOATS: 151 HEAD. MAINLY LIGHT WEIGHTS. BY THE HEAD 20-35 LBS. 10.00-23.00; 40-60 LBS. 18.00-28.00; FEW 75 LBS. AT 31.00; 20 BRED GILTS AND ANDSOWS 100.00-150.00; BY THE POUND, 100-140 LBS. 33.00-36.00.

STOCK BOARS: 200-250 LBS. 28.00-32.00.

Frederick Livestock Auction

Frederick, Md.

July 20, 1992

Report Supplied by Auction

SLAUGHTER COWS: 102 HEAD, STEADY PRICES. UTILITY 46.50-50.00; HIGH DRESSING TO 51.00, CANNERS 42.00-46.00; SHELLY 42.00 DOWN.

BULLS: 6 HEAD. YG#1 1400-2000 LBS. 60.00-65.00; YG#2 54.00-59.00.

FED STEERS: 10 HEAD. LOW CHOICE 975 LBS. TO 72.50; SELECT 1155 LBS. TO 66.00; STANDARD 57.00-62.00.

FED HEIFERS: NONE.
VEAL CALVES: 294 HEAD. LOW CHOICE 180-250 LBS. 90.00; GOOD TO 86.00; CULLS 85-110 LBS. 62.00-70.00; 50-80 LBS. 60.00-67.00; WEAK/ROUGH 55.00 DOWN.

FARM CALVES: GOOD DEMAND. HOLSTEIN BULLS #1 90-120 LBS. 130.00-149.00; FEW 125-135 LBS. 115.00-130.00; #2 80-110 LBS. 100.00-130.00; HOLSTEIN HEIFERS #1 95-125 LBS. 135.00-165.00; BEEF X BULLS AND HEIFERS 95.00-130.00.

BUTCHER HOGS: 43 HEAD. US#1&3 215-260 LBS. 41.50-43.00; #2&3 39.00-41.00.

39.00-41.00.

SOWS: NONE.

BOARS: NONE.

STOCK CATTLE: 35 HEAD. STEERS 350-500 LBS. TO 85.50; 500-700 LBS. 68.00-78.00.

HEIFERS: 300-500 LBS. 70.00-77.00; 500-650 LBS. 62.00-70.00; FEW HOLSTEINS 400 LBS. TO 75.00.

BULLS: HOLSTEINS 300-500 LBS. 48.00-66.00; FEW BEEF TYPE 900-1000 LBS. 59.00.

LAMBS: CHOICE 100-115 LBS. 57.50-61.50; 50-75 LBS. 59.00-64.50; GOOD ALL WEIGHTS 50.00-56.00; MEDIUM 43.00-50.00.

SHEEP: 1 75 LB. AT 37.00.

GOATS: NONE.

PIGS AND SHOATS: 74 HEAD. BY THE HEAD, 20-35 LBS. 15.00-21.00; 50-60 LBS. 22.00-25.00.

Morrison Cove Livestock

Martinsburg, Pa.

July 20, 1992

Report supplied by auction

CATTLE 214. STEERS CHOICE 71.85-73.85; GOOD 69.00-70.75.

HEIFERS: CHOICE 70.35-72.10; GOOD 66.00-70.10.

COWS: UTILITY & COMMERCIAL 43.75-51.10; CANNER & LOW CUTTER 37.00-49.50.

BULLOCKS: GOOD & CHOICE 61.75-65.25.

BULLS: YIELD GRADE NO. 1 58.25-64.00.

FEEDER CATTLE: STEERS 69.00-83.00; BULLS 57.50-75.50; HEIFERS 58.50-71.50.

CALVES 380. CHOICE 95.00-99.00;

GOOD 84.00-91.00; STANDARD 45.00-71.00; HOLSTEIN BULLS 90-130 LBS. 125.00-151.00; HOLSTEIN HEIFERS 90-130 LBS. 140.00-177.00.

HOGS: 188. US NO. 1-2 41.50-42.25; US NO. 1-3 40.50-41.25.

SOWS: US NO. 1-3 30.00-34.25.

BOARS 27.50-30.50.

FEEDER PIGS: 60. US#1-3 20-50 LBS. 17.50-27.50.

SHEEP 27. CHOICE 54.00-59.00;

GOOD 49.00-53.00; SLAUGHTER EWES 17.00-22.00.

GOATS: 17.00-51.00.

12 LOADS OF HAY. TIMOTHY 70.00-128.00; 1 LOAD OF STRAW 96.00.

New Holland Horses

New Holland Sales Stables
New Holland, PA

Monday, July 20, 1992

REPORT SUPPLIED BY AUCTION 247 HEAD. MARKET HIGHER; PONIES HIGHER.

DRIVING HORSES 685.00-860.00.

RIDING HORSES 585.00-875.00.

REGISTERED 880.00-1400.00.

MARE PONIES 95.00-325.00.

PONY COLTS 45.00-115.00.

GELDINGS 95.00-325.00.

LARGER PONIES 410.00-580.00.

HORSE COLTS 310.00-430.00.

KILLERS: LIGHTWEIGHT 450.00-585.00.

HEAVYWEIGHT KILLERS 675.00-840.00.

THIN 160.00-410.00.



Agripac
Alberta Agri-Industries Ltd.

Bag & Bidders
• Affordable Price
• Unmatched Quality

Your Profit is in the Agri-Pac bag.
717-656-9919

"The Best for Less"
CALL 1-800-661-4150

GOOD BARN
RECEIVING STABLE

- Market Hogs
- Sows • Boars
- Cull Pigs

NOW RECEIVING:
Mon. 6:30-11 a.m.
Sat. 6:30-10 a.m.

All market hogs received at receiving station must be scheduled one week in advance

Rt. 897 - 1 mile North of Fivepointville
(215) 445-5776 • FAX (215) 445-6099

HATFIELD

HORSE SALE
AUG. 14, 1992
7:00 P.M.

NEW HOLLAND SALES STABLES INC.
THE ACTION AUCTION

Wed., July 29 Dairy Sale
2 Loads of Springing Heifers
Load Bradford County Cows
& First Calf Heifers
Load Fresh 2nd Calf Heifers
See Complete Details Page B38

Coming Aug. 5
Burbet Herd Dispersal

LIVESTOCK IS OUR ONLY BUSINESS

MONDAY

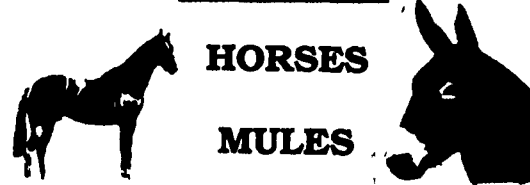
SLAUGHTER HOGS



EARLY BIRD HOG SALE
8:00 A.M.

Sell Your Hogs At New Holland Sales Stables, Inc.
See them weighed, sold and pickup your check.

10:00 A.M.



HORSES
MULES

1:30 P.M.



BEEF SALE
SHEEP
GOATS
CALVES

WEDNESDAY

HEIFER SALE

11:00 A.M.

COW SALE 12:00 NOON

HEIFERS
BULLS



DAIRY
COWS

We have the usual run of 50 to 100 Heifers, all ages.
Loads of fresh cows and springers from our regular shippers.
Also some local fresh cows and springers.

1:30 P.M.

FEEDER PIG SALE



Pigs are accepted after 6:30 A.M. State graded from 8 to 12.
Dairy Barn and Feeder Pig Barn are cleaned and disinfected weekly for your protection.

THURSDAY

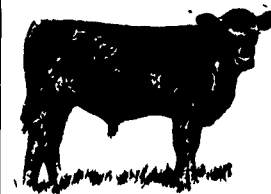
Beef Auction

10:00 A.M.

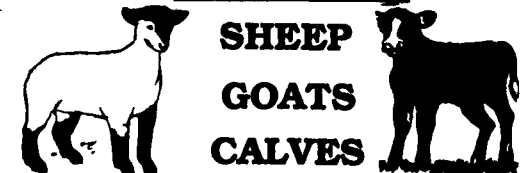
BULLS
STEERS
BEEF COWS



1:00 P.M.
STOCKERS
&
FEEDERS



12:00 NOON



SHEEP
GOATS
CALVES

NEW HOLLAND SALES STABLES, INC.

12 Miles East of Lancaster Off Route 23, New Holland, Penna.

MANAGERS

Norman & David Kolb - 717-397-5538

Field Representatives

Luke Eberly - 215-267-6608 738-1865
Homer Eberly - 215-267-3047
Ron Ranck - 717-656-9849

Sale Barn Office Manager
Roger Floyd - 717-354-4341
FAX # 717-355-0706

Order Buyer
Paul Good - 215-445-6662