

Valley Stockyards

Athens, Pa.

Monday, July 20, 1992

Report supplied by auction

HOLSTEIN HEIFER CALVES TO 180.00.
 VEAL CALVES MEDIUM 65.00-85.00.
 VEALER BULL CALVES 125.00-157.50.
 SLAUGHTER CALVES 55.00-80.00
 GRASSERS & FEEDERS 45.00-72.00.
 LAMBS MEDIUM MOSTLY TO 50.00.
 SHEEP 12.00-20.00.
 HOGS 200-250 LBS. 38.00-42.00.
 SOWS 22.00-26.00.
 BOARS LARGE TO 20.00.
 HEIFERS 50.00-56.75.
 STEERS NO TOP STEERS.
 FEEDER STEERS 50.00-72.00.
 BULLS 48.00-62.50.
 GOOD COWS 47.00-51.50.
 COWS MEDIUM 44.00-46.00.
 COWS POOR OR SMALL 38.00 AND DOWN.
 HORSES EACH TO 325.00
 PONIES SMALL TO 90.00.
 GOATS: TO 52.50.
 CATTLE AND CALF MARKET STEADY. PRICES ABOUT STEADY

New Holland Dairy

New Holland Sales Stables

Wednesday, July 22, 1992

Report supplied by auction

DAIRY COWS 108; HEIFERS 113; BULLS 2. MARKET STRONGER.
 FROM PENNSYLVANIA, SPRINGERS 1025.00-1400.00, FRESH COWS 975.00-1050.00, BETTER FRESH 1350.00-1500.00.
 FROM PENNSYLVANIA, FRESH COWS 925.00-1275.00, SPRINGER 1225.00-1300.00.
 FROM CANADA, FRESH COWS 825.00-1010.00, SPRINGERS 825.00-1050.00.
 FROM CANADA, FRESH COWS 1100.00-1410.00, BETTER FRESH 1550.00-1700.00.
 A HERD DISPERSAL OF 36 HEAD IN ALL STAGES OF PRODUCTION BROUGHT 660.00-1125.00.
 LOCALLY CONSIGNED COWS SOLD FRESH 775.00-1185.00.
 OPEN BREEDING-AGE HEIFERS 520.00-685.00.
 SPRINGING HEIFERS 825.00-1125.00, FEW 1200.00-1260.00.
 PUREBRED HEIFERS 950.00-1300.00.
 SHORTBRED HEIFERS 700.00-985.00.
 SMALL OPEN HEIFERS 400.00-470.00.
 VACCINATED HEIFERS BRING A PREMIUM.

Keisters Auction

MIDDLEBURG, PA

July 21, 1992

CATTLE 359...Supplied by the auction..High Choice and Prime steers 74.00-75.75, Choice 71.00-74.50, Good 68.00-70.75. Choice Holsteins 66.00-68.50, Good 63.00-65.75, Standard 58.00-62.75. Choice heifers 70.00-72.25, Good 65.00-69.75, Standard 58.00-64.75. Breaking Utility & Commercial sl. cows 47.00-51.75, Cutter & Boning Utility 46.00-51.50, Canner & Low Cutter 42.00-45.75. Shells down to 35.00-42.00. Choice bullocks 65.00-67.50, Good 60.00-64.75. Yield Grade No. 1, 1200/2330 lbs. sl. bulls 58.00-65.00, No. 2 800/2275 lbs. 53.50-57.75. Feeder Cattle: 350/775 lbs. steers 70.00-83.50, 550/700 lbs. heifers 60.00-78.50, 400/825 lbs. bulls 62.00-82.00.
 CALVES 201...Choice vealers 89.00-97.00. Good 60/100 lbs. sl. calves 60.00-85.00. Farm Calves: Holstein bulls No. 1, 85/125 lbs. 120.00-157.50, Holsteins heifers No. 1, 80/125 lbs. 150.00-197.50.
 HOGS 310...(07/20/92)..No. 1 220/250 lbs. barrows and gilts 45.00-46.50, No. 1-2 220/250 lbs. 44.00-45.00, No. 1-3, 220/250 lbs. 42.50-44.00, 2-3 220/300 lbs. 35.00-42.00. Sows: 1-3 350/740 lbs. 30.50-32.50, 2-3 300/700 lbs. 24.00-30.00. Boars 28.00-30.75.
 FEEDER PIGS 222...US 1-3 20/40 lbs. feeder pigs 15.00-28.00, 40/60 lbs. 25.00-32.00. --- all per head.
 SHEEP 76...Choice 75/100 lbs. Spring sl. lambs 60.00-68.00, few 25/38 lbs. 70.00-95.00, Good 40/75 lbs. 45.00-60.00. Slaughter Ewes 18.00-28.00. - all cwt.
 GOATS 62...Small 20.00-48.00, Large 45.00-99.00. --- all per head.

Jersey Shore Livestock Market, Inc.

Auction every Thursday at 4:00 p.m.

Jersey Shore, Pa.

Report supplied by Auction

Thursday, July 23, 1992

RETURN TO FARM CALF 110.00-160.00.
 GOOD VEAL: 70.00-109.00.
 COMMON VEAL: 40.00-69.00.
 CHOICE STEERS: 69.00-72.00.
 SELECT STEERS: 65.00-70.00.
 COMMON STEERS: 60.00-64.00.
 COMMERCIAL COWS: 46.00-51.00.
 CANNERS-CUTTERS: 43.00-50.00.
 SHELLS: 37.00-42.00.
 CHOICE HEIFERS: 70.00-72.00.
 SELECT HEIFERS: 65.00-69.00.
 COMMON HEIFERS: 53.00-64.00.
 GOOD FEEDERS: 70.00-106.00.
 COMMON FEEDERS: 50.00-69.00.
 BULLS: 49.00-64.00
 GOOD HOGS: 40.00-42.00.

Adams Co. 4-H Horse Show Planned

GETTYSBURG (Adams Co.) — The Adams County 4-H Horse clubs are busy getting ready for the annual 4-H Horse Show, scheduled for Saturday, August 1, at the South Mountain Fairgrounds, near Arendtsville.

The riders who will participate in the show are to be the members of the Abbotstown 4-H Horse Club, the Gettysburg 4-H Club, and the Riding High Club.

Members will compete in grooming and showmanship classes, with a champion and reserve champion being awarded in each division. Riders are also to participate in halter and performance classes, such as equitation, jumping, trail, and Western plea-

sure. The 4-H Horse program is designed to introduce young people to the feeding, grooming, and training of horses.

Local businesses and private individuals support the show by sponsoring the show's classes, and they receive recognition through radio stories and newspaper ads and articles.

Everyone is invited to come to the show, and admission is free. Grooming and showmanship classes begin at 9:30 a.m. with

performance classes immediately following. The Adams County 4-H Horse Show is a part of the annual 4-H Fair.

Field Day Shows Grazing

LANCASTER (Lancaster Co.) — All are invited to a Penn State University Extension and farmer-supported field day on grazing dairy cattle as an alternative to bunk-only feeding, to be held from 10 a.m. to 2:30 p.m., July 31, at the Lindenhof Guernsey Farm, in southern Lancaster County.

The Lindenhof farm is located along Rt. 472, about 2 miles south of Kirkwood, and is the home of Dick and Axel Linde, and Millie Widmann.

In addition to a full day of speakers, also on hand will be exhibits of fencing materials, fence chargers, and cattle waterers.

The schedule is for material exhibits to start at 9:30 a.m., followed by a talk by Glenn Shirk, county extension agent on "Is Grazing For Me?"

Shortly afterward, Dr. Lawrence Muller, PSU dairy professor, is to discuss managing cows on pasture as experienced at the state college.

At 11 a.m., Thomas Calvert, with the Somerset office of the USDA Soil Conservation Service, is to discuss the number and size of pasture lots recommended for grazing.

Robert Anderson, extension agent, is to take over at 11:30 a.m. to discuss lots and weed control.

At 11:45 a.m., Calvert is to talk about fencers, fencing materials and waterers.

Lunch starts 12:15 p.m. and food is to be available for purchase.

At 1:30 p.m., several farmers experienced with grazing are to report on their findings.

Chester Co. Holstein Club Picnic Set

Those who wish to attend the annual Chester County Holstein Club picnic should have reservations made by August 4, according to club organizers.

The picnic is scheduled for 10 a.m., August 13, at the Alvin Stoltzfus farm, located near Russellville.

More than half of the Stoltzfus herd is out of the Dunwood Golden and Cola cow families and scored Very Good or Excellent. The herd BAA is 106. Production average is more than 24,000 pounds milk, and 950 pounds fat with a 3.3 percent protein content.

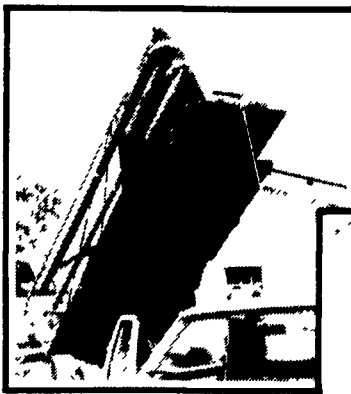
The speaker for the day is Dave Rama, Holstein merchandiser and pedigree reader, whose topic is to be "Breeding to Merchandise."

In addition, generous pork sandwiches are offered for lunch at \$4 per adult, \$2 for youth aged 5 to 12 years, and no charge for youth 4 years old and younger.

To make reservations, call Jim Miller at 938-8668, Dick Hostetter at (215) 857-2780, or Ken Umble at 593-2274.

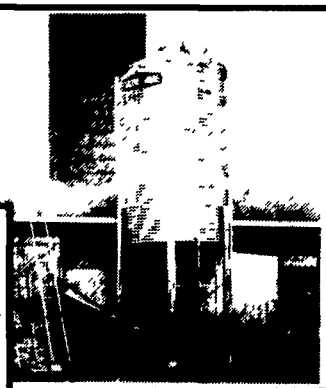
To get to the farm, head north approximately 1 1/2 miles from the intersection of routes 10 and 896. The farm is located on the west side of the highway.

CHORE-TIME BINS AND AUGERS



Take 'em Down!

We Stock Truckloads Of Chore-Time Bins & Miles Of Chore-Time FLEX-AUGER



Put 'em Up!



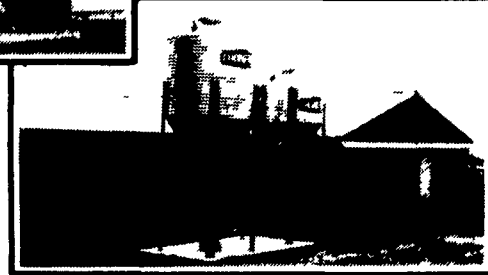
We Will Assemble & Deliver Bins To Your Farm

Bins... Large Or Small

Authorized



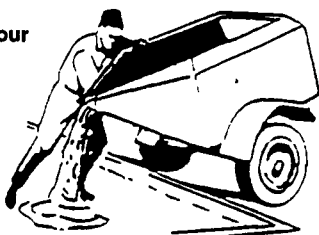
Master Distributor



Custom Applications

WHY PUT OFF THAT SMALL CONCRETE JOB ANY LONGER?

- Ready To Pour
- No Mixing
- No Messing
- As Little As 1/4 Yard
- 1 Yard Trailers



CONCRETE TRAILER CARTS AVAILABLE TO RENT AT

\$15.00

Call For Details:

HENRY B. HOOVER, INC.

1731 W. Main St. Ephrata, PA 17522

717-733-6593

AGWAY.

Mon.-Thurs. 7:30 a.m.-6:00 p.m.
 Fri. 7:30 a.m.-7 p.m.
 Sat. 7:30 a.m.-3:00 p.m.

Northeast agri systems

NORTHEAST AGRI SYSTEMS, INC.

FLYWAY BUSINESS PARK
 139 A West Airport Rd.
 Lititz, PA 17543

(717) 569-2702 1-800-673-2580



STORE HOURS
 Mon.-Fri. 7:30-4:30
 Sat. 7:30-11:30

FOR FREE ESTIMATES CALL OUR TOLL-FREE CUSTOMER SERVICE NUMBER: 1-800-673-2580