

# LITTLE HILL FARMS THE JAMES HILL FAMILY



**A FAMILY DAIRY BUILDING FOR THE FUTURE**

Trading New Jersey Holland Dutch Dairy Neighbors  
For Lebanon County, Pennsylvania Dutch Neighbors

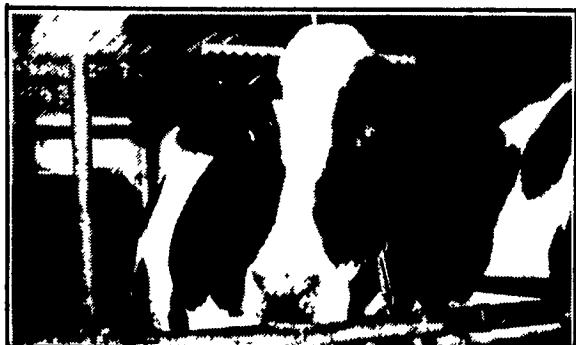
## THE JAMES HILL FAMILY



Jim & Billie Hill, daughter Terry, and son Rich are all involved in the day to day operation of Little Hill Farm. They are pictured with Lodestar Ovation Banner who is excellent at 90 points, freshened in November at 6 years 8 months of age and is projected in 305 days to milk 26,759 lbs. of milk, 968 of fat and 806 of protein. She is bred back and due to

freshen again in 367 days. The Hills have been Brown's customers for over twenty years in two states. They moved from New Jersey to Pennsylvania in 1987 to escape the urban sprawl and quickly adjusted to their new Pennsylvania Dutch neighbors.

### Shasta - First Homebred Excellent



This Bell daughter is an example of the type of cows the Hills are building on. Her records speak for themselves.

Age	Days Milked	Milk	Fat	Protein
2-0	365	23,488	755	719
3-5	296	23,524	811	716
4-5	365	32,208	1064	950
5-7	305	30,458	878	860
Proj.				

Shasta is due back in less than 12 months. Breeding is important to Jim and Rich. They feel Brown's Prolac helps get cows in shape faster for rebreeding and prolongs milk peaks.

### Calves Need The Right Start



A good environment and Brown's 20/20 Quick Start, Calf Starter, and Calf Grower get calves growing quickly.

### Management A Key To Success



A clean barn and clean cows helped Little Hill Farms achieve the top award for low somatic cell count in Lebanon County with Swiss and third with Holsteins. With a rolling herd average of nearly 21,500 lbs. of milk for Holsteins and over 19,000 lbs. for the Swiss it is easy to see their management rates near the top. Haylage, corn silage, wheatlage, and mixed hay make up the forages fed at Little Hill. Brown's 38 Milkmaster, Jim's own roasted beans and ear corn make up the majority of the dairy grain mix. Jim said when they moved their herd average dropped but that Brown's Area Directors Dave McCracken and currently Dennis Kulp got the herd moving in the right direction again. Their goal is to continue to keep the herd healthy and milking well.

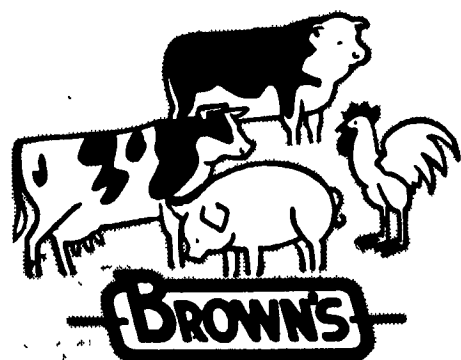
### New Heifer Barn A Real Labor Saver



With the new heifer barn just erected, Jim and Rich can keep a closer eye on the heifers and control feeding, breeding & herd health.

You are cordially invited to visit Little Hill Farms for the Lebanon County Holstein Field Day and Picnic on Thursday Night, August 13th at 7:00 PM. The farm is located on Mt. Zion Road just north of Mt. Zion and south of the Swatara Creek.

**AT BROWN'S WE TAKE PRIDE IN WORKING WITH FARM FAMILIES LIKE THE HILLS.**



## F.M. BROWN'S SONS, Inc.

**MANUFACTURING LIVESTOCK FEEDS SINCE 1871**

BIRDSBORO, PA  
19508

215-582-2741  
1-800-362-6455 IN PA  
1-800-367-6455 OUT OF STATE

FLEETWOOD, PA  
19522

215-944-7654

SINKING SPRING, PA  
19608

215-678-4567  
IN PA 1-800-345-3344