

National Grain Market

St. Joseph, Mo.

Wednesday, July 8, 1992

USDA DAILY NATIONAL GRAIN SUMMARY GRAIN AND SOYBEAN PRICES MIXED AS BIDS ADJUST AND RE-ADJUST TO WEATHER REPORTS. WHEAT MIXED, FROM 4 CENTS HIGHER TO STEADY TO 2 CENTS LOWER, EXCEPT MINNEAPOLIS SWITCHED MONTH ON WHICH BASIS FIGURED AND BIDS HARD TO COME BY WITH SOME QUOTES AS MUCH AS 64 3/4 CENTS LOWER. CORN 2 TO 3 CENTS LOWER SORGHUM 3 TO 8 CENTS LOWER. SOYBEANS STEADY TO 3 CENTS HIGHER. EARLY WEEK RAINS DROPPED PRICES SHARPLY. DOWNTURNS THOUGHT TO BE A LITTLE SEVERE AND COMEBACKS NOTED ON TUESDAY WITH FURTHER ADJUSTMENTS BEING MADE ON WEDNESDAY. RAINS NOT AS GENERAL AS WEATHER MAPS INDICATE AND SOME PLACES STILL IN NEED OF MOISTURE. GOOD RAINS MORE BENEFICIAL TO CORN AND THIS COMMODITY SUFFERED THE MOST DECLINE. ACRES AND ACRES OF CORN RIGHT IN THE TASSELLING STAGE.

EXPORT NEWS: SOUTH AFRICA BOUGHT 198,000 TONNES U.S. CORN FOR OCT/NOV SHIPMENT. UKRAINE BOUGHT 190,000 METRIC TONS CORN FOR 91/92 MARKETING YEAR. SALE OF 190,000 TONNES CORN TO UNKNOWN FOR 91/92 MARKETING YEAR. PURCHASE FROM FOREIGN SELLERS FOR 285,000 TONNES CORN TO UNKNOWN DESTINATION FOR 91/92 MARKETING YEAR. RUSSIA BOUGHT 49,500 TONNES U.S. BARLEY, UNDER EEP FOR JULY/AUG.

DATE CHANGE YEAR AGO 07/08/92 07/07/92 07/10/91 WHEAT: KANSAS CITY 3.48-3.50 NC 2.76-2.78 MINNEAPOLIS TRUCK BID 3.58 DN 64 3/4 2.87 1/4-2.95 1/4 PORTLAND 4.20-4.25 NC-DN 2 3.31-3.33 ST. LOUIS 3.39-3.42 UP 4 2.61-2.64.

CORN, U.S. NO. 2 YELLOW: KANSAS CITY 2.50-2.52 DN 3 2.40-2.43 MINNEAPOLIS 2.42 DN 2 2.27 SO. IOWA 2.48-2.50 DN 2 2.34-2.36 1/2 OMAHA 2.36-2.39 DN 2 2.22-2.23. SOYBEANS, NO. 1 YELLOW: KAN-

SAS CITY 5.82-5.86 DN 2-UP 1 5.40-5.42 MINNEAPOLIS 5.78 3/4 NC 5.29 1/4 SO. IOWA 5.81-5.86 NC 5.30-5.35 1/2 C. ILL. PROCESSORS 5.88 3/4-5.94 3/4 UP 3-NC 5.37 1/2-5.40 1/2.

*KANSAS CITY, US NO. 1 HARD RED WINTER WHEAT, ORDINARY PROTEIN MINNEAPOLIS, US NO 1 DARK NORTHERN SPRING WHEAT, 14% PROTEIN PORTLAND, NO. 1 SOFT WHITE WHEAT, ST. LOUIS, NO. 2 SOFT RED WINTER WHEAT.

FUTURES CLOSE: KANSAS CITY (SEPT) WHEAT 3.40 UP 1 1/4 2.68 3/4 MINNEAPOLIS (SEPT) WHEAT 3 35 NC 2.65 1/4 CHICAGO (SEPT) WHEAT 3.42 1/2 UP 3 2.69 1/4 (SEPT) CORN 2 42 DN 3 2.23 (DEC) CORN 2 43 1/2 DN 3 1/2 2.24 1/2 (AUG) SOYBEANS 5.78 3/4 NC-5.22 1/4

EXPORT: BARGE OR RAIL, PORT OF NEW ORLEANS OR NORTH TEXAS GULF. NO. 1 HARD RED WINTER WHEAT ORDINARY PROTEIN 3.76-3.77 UP 2-1 3.11 NO. 2 SOFT RED WINTER WHEAT 3.61-3.62 UP 2-1 3.10-3.14 NO. 2 YELLOW CORN 2.70-2.71 UP 2.57-2.60 NO. 2 YELLOW SORGHUM RAIL 4.31 DN 3 BARGE 1.60 DN 6 4.40-4.49 NO. 2 YELLOW SOYBEANS 6.08-6.09 DN 1-NC 5.61-5.62.

New York & Philadelphia Frozen Egg Report

Tuesday, July 7, 1992

Prices trended lower. Trading activity was light; but, lower asking prices were expected to stimulate additional buying interest. Raw materials were usually fully adequate for the currently limited needs. Floor stocks were in good balance and easily satisfied trade requirements.

WHOLESALE SELLING PRICES (CENTS PER POUND IN 30 LB. CONTAINERS) TRUCKLOTS LTL (MIN. 25 CONT.) RANGE MOSTLY RANGE WHOLE 42-45 43-44 46-52 BLEND (I) 55-64 WHITES 36-39 37-38 40-47 SUGARED YOLKS (MIN 43% SOLIDS) 50-54 52-53 55-63 SALTED YOLKS (MIN 43% SOLIDS) 46-50 48-50 51-59. (I) - WHOLE PLUS YOLK PLUS SWEETENER, GENERALLY 28-32% EGG SOLIDS.

New England Shell Eggs

Wednesday, July 8, 1992

NEW ENGLAND: Prices to retailers were unchanged to lower on the large sizes, unchanged on the balance. Trade sentiment was mixed from steady to weak. Supplies were adequate locally, and extra eggs were offered from outside the area at generally lower prices. Demand ranged fair to very good, best where vacation business began.

PRICES PAID TO PRODUCERS, CASES EXCHANGED, GRADE YIELD BASIS, BROWN EGGS LOOSE, AT FARM, CENTS PER DOZEN RANGE JUMBO 77-80 EXTRA LARGE .71-.74, LARGE .63-.66, MEDIUM .47-.50, SMALL .20-.23.

BOSTON. PRICES TO RETAILERS, SALES TO VOLUME BUYERS, USDA GRADE A AND GRADE A, BROWN EGGS IN CARTONS, DELIVERED STORE DOOR, CENTS PER DOZEN RANGE EXTRA LARGE .90-.93, LARGE .82-.85, MEDIUM .66-.68.

Central U.S. Carlot

Pork Report July 9, 1992

Report supplied by USDA

CENTRAL U.S. CARLOT PORK REPORT FOB OMAHA BASIS INCLUDES MAJOR PRODUCTION AREAS IN MIDWEST AS OF 3 P.M. COMPARED TUESDAY'S 3:00 P.M. CLOSE: FRESH PORK LOINS 2.00 LOWER; BUTTS NOT ADEQUATELY

TESTED TO ESTABLISH TREND; SKND. HAMS 17-20 LBS. STEADY, 20-26 LBS. STEADY TO 2.00 LOWER; SDLS. BELLIES STEADY TO FIRM. MARKET ACTIVITY MODERATE. DEMAND LIGHT FOR RETAIL ITEMS, WITH MOSTLY MODERATE SUPPLIES. DEMAND FOR GREEN MEATS MODERATE WITH LIGHT TO MODERATE OFFERINGS.

32.0 LOADS PORK CUTS
22.0 LOADS TRIM/PROCESS PORK CUTS

LOINS, REG., FRESH 14-18 LBS., * 7.5 LOADS, RANGE 108.00-111.00, WGHTD. AVG. 108.60. 1/2" TRIM 14-18 LBS., 7.5 LOADS, RANGE 128.00-130.00, WGHTD. AVG. 128.53

COMBOS 22 LBS. AND UP, 2.0 LOADS, RANGE 71.00, WGHTD. AVG. 71.00.

LOIN, BLS CTRCT 5-7 LBS. 0.5 LOADS, RANGE 239.00, WGHTD. AVG. 239.00.

PICNIC, FRESH (COMBOS) FOR SMOKER TRIM, RS 4.0 LOADS, RANGE 48.00, WGHTD. AVG. 48.00.

SPARERIB, FRESH 3.5-5.5 LBS. 1.0 LOADS, RANGE 98.00, WGHTD. AVG. 98.00.

HAM, SKINNED, SELECTED FRESH 17-20 LBS., 3.0 LOADS, RANGE 75.00, WGHTD. AVG. 75.00. FRESH 20-26 LBS., 4.5 LOADS, RANGE 74.00-75.00, WGHTD. AVG. 74.56.

HAM, SKINNED, COMMODITY FRESH 20-26 LBS., 3.5 LOADS, RANGE 67.00, WGHTD. AVG. 67.00.

BELLY, SDLS SKIN-ON, FRESH FRESH 12-14 LBS., 1.0 LOADS, RANGE 33.00, WGHTD. AVG. 33.00. FRESH 14-16 LBS., 3.0 LOADS, RANGE 34.00-35.00, WGHTD. AVG. 34.67.

FRESH 16-18 LBS., 2.0 LOADS, RANGE 32.00-33.00, WGHTD. AVG. 32.50.

PORK TRIMMINGS/ BONELESS PROCESSING PORK (CHEMICAL LEAN) COMBO 42% FRESH, 6.5 LOADS, RANGE 22.00-25.00, WGHTD. AVG. 24.31.

COMBO 72% FRESH, 13.0 LOADS, RANGE 60.00, WGHTD. AVG. 60.00.

BONELESS PICNIC MEAT COMBO 72% FRESH, 1.0 LOADS, RANGE 61.00, WGHTD. AVG. 61.00.

SKINNED JOWLS COMBO FRESH, 1.5 LOADS, RANGE 16.00, WGHTD. AVG. 16.00.

BOXED FROZEN, RANGE 21.50, WGHTD. AVG. 21.50 C.

NOTE! (*) REFLECTS 1/2" TRIMMED PRODUCT BROUGHT BACK TO A REGULAR COMMODITY BASIS.



PARTNERS ANTIQUE CENTER

403 N. Third St., Columbia, PA

(717) 684-5364

OPEN 7 DAYS A WEEK
10 AM - 5 PM

Furniture • Quilts • Primitives • Crocks
Lamps • Books • Prints • Pottery • Toys

Limited Dealer Space Available



Easy Access On/Off Rt. 30

SHEARSON LEHMAN BROTHERS

FORNEY LONGENECKER
SECOND VICE PRESIDENT / FINANCIAL CONSULTANT COMMODITIES

29 E. KING STREET
SUITE 200
LANCASTER, PA 17602

717 295 8914 800 342 7033 PA
800 441 1997 US

**HORSE SALE
JULY 17, 1992
7:00 P.M.**

**NEW HOLLAND SALES STABLES INC.
THE ACTION AUCTION**

LIVESTOCK IS OUR ONLY BUSINESS

Load Canadian Cows From LeRoy Smucker
Load Cows From Roy Johncox Palmyra, N.Y.
Group Franklin Co. Heifers
Load Bradford Co. Cows
See Page B38 this issue for complete details

MONDAY

SLAUGHTER HOGS



**EARLY BIRD HOG SALE
8:00 A.M.**

Sell Your Hogs At New Holland Sales Stables, Inc. See them weighed, sold and pickup your check.

10:00 A.M.



**HORSES
MULES**



1:30 P.M.

BEEF SALE



**SHEEP
GOATS
CALVES**



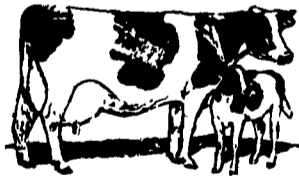
WEDNESDAY

HEIFER SALE

11:00 A.M.

COW SALE 12:00 NOON

**HEIFERS
BULLS**



**DAIRY
COWS**

We have the usual run of 50 to 100 Heifers, all ages. Loads of fresh cows and springers from our regular shippers. Also some local fresh cows and springers.

1:30 P.M.

FEEDER PIG SALE



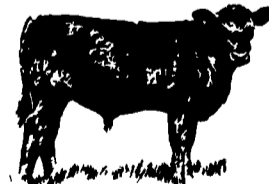
Pigs are accepted after 6:30 A.M. State graded from 8 to 12. Dairy Barn and Feeder Pig Barn are cleaned and disinfected weekly for your protection.

THURSDAY

Beef Auction

10:00 A.M.

**BULLS
STEERS
BEEF COWS**



**1:00 P.M.
STOCKERS
&
FEEDERS**

12:00 NOON



**SHEEP
GOATS
CALVES**



NEW HOLLAND SALES STABLES, INC.
12 Miles East of Lancaster Off Route 23, New Holland, Penna.

MANAGERS

Norman & David Kolb - 717-397-5538

Field Representatives

Luke Eberly - 215-267-6608 738-1865
Homer Eberly - 215-267-3047
Ron Ranck - 717-656-9849

Sale Barn Office Manager
Roger Floyd - 717-354-4341
FAX # 717-355-0706

Order Buyer
Paul Good - 215-445-6662