

JONES



The GMC GIANT of Lancaster County (717) 394-0711

Ask For
Truck Sales

1335 Manheim Pike, Lancaster
(Next To Landis Bros. John Deere)

OVER 180 TRUCKS AVAILABLE!

All Of Our Trucks Are PA State Inspected And Ready To Go!
We Love DIESELS!



**'91 FORD
F-150 4x4**
XLT Lariat, V-8, 5 Spd.,
4C, Immaculate! #6949
Was \$16,995
NOW **\$15,350**



**'85 FORD
F150 4x4**
XLT Lariat, V-8,
AT, AC
#6932
Was \$6,495
NOW **\$5,300**



**'90 FORD
F-150 CLUB CAB**
XLT, 351, AT, AC,
PW, PDL., Loaded, #6938
Was \$15,495
NOW **\$13,250**



**'88 CHEVY
SCOTTSDALE**
AT, AC, #6936
(File Photo)
Was \$8,995
NOW **\$7,750**



DIESEL
'91 GMC VAN RALLY
STX Front & Rear Air, All The
Toys, Only 8,000 Mi. #6856
Was \$24,995
NOW **\$18,700**



DIESEL
**'89 GMC 4x4
SUBURBAN**
AT, AC, Loaded #6919
(File Photo)
Was \$15,995
NOW **\$13,750**



**'91 CHEVY
3/4 TON 4x4**
Silverado, AT, 350, AC,
Only 29,000 Mi., #6893
Was \$16,900
NOW **\$14,800**



**'91 GMC
SUBURBAN 4x4**
350, AT, AC, Loaded,
Factory Demo, Only 3,500 Miles,
#6737
Was \$27,500
NOW **\$21,500**



**'89 GMC SIERRA
CLASSIC 4x4**
350, AT, AC, All The Toys,
Low Miles #6844
Was \$14,450
NOW **\$11,700**



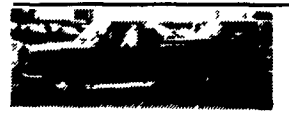
**'87 CHEVY
3/4 TON 4x4**
8600 GVW, 350, AT
#6912
Was \$8,995
NOW **\$7,000**



**'91 GMC
SPORTSIDE 4x4**
Sierra Classic, 350,
Bucket Seats, AC, Loaded, #6944
Was \$17,995
NOW **\$15,750**



DIESEL
**'90 GMC
SUBURBAN**
Front & Rear Air & Heat,
9 Pass, Very Clean #6866
Was \$17,995
NOW **\$13,900**



**'87 FORD
F-150**
AT, 39,000 Mi.,
300, 6 Cyl., #6943
Was \$7,995
NOW **\$5,900**



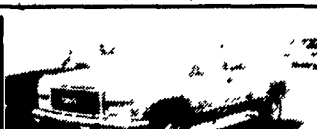
**'89 GMC
S-15 PICK-UP**
V-6, 5 Spd.,
Long Bed, #6892
Was \$5,995
NOW **\$4,250**



**'88 CHEVY
CHEYENNE**
V8, AT, AC, Only 30,000 Mi.
#6907 Was \$10,995
NOW **\$8,770**



**'89 GMC HIGH
SIERRA**
350, 5 Spd., AC, Very Sharp,
#6931
Was \$9,995
NOW **\$8,750**



**'90 GMC 3/4
TON EXT. CAB**
V8, AT, AC #6958
Was \$11,495
NOW **\$10,750**



DIESEL
**'90 CHEVY
3/4 TON 4x4**
4 Spd., AC, Alum. Wheels,
#6834
Was \$15,995
NOW **\$13,200**

* Includes Applicable Factory Rebates

NEW HOLLAND

TRUCK COUNTRY LIGHT AND HEAVY DUTY

ACRES & ACRES OF SELECTION ON ROUTE 23 IN NEW HOLLAND



**1992 FORD
RANGER 4x2
XLT**

Pickup, 4 Cyl, 5 Speed Transmission, Power Steering, Power Brakes, AM-FM Stereo Cassette, Radial Tires, Sliding Rear Window, Chrome Rear Step Bumper, Tinted Glass, Interval Wipers, Cast Aluminum Wheels, #F6629

\$9,308



**1992 FORD
SUPERDUTY
CAB & CHAS-
SIS**

Diesel, V8, 5 Speed Transmission, Overdrive, Power Steering, Power Brakes, AM-FM Stereo, Radial Tires, Super Engine Cooling, 15,000 GVW, 161" Wheelbase, Headliner, Tinted Glass, #F6678.

\$19,644



**1992 FORD
F-250 4x4**

V8, 5 Speed Transmission, Overdrive Power Steering, Power Brakes, Air Conditioning, AM-FM Stereo, Radial Tires, 8600 GVW, Headliner, Low Mount Mirrors, Sport Wheel Covers, Argent Rear Step Bumper, #F6156.

\$16,746



**1992 FORD
F-150 4x4**

Pickup, 6 Cyl., 5 Speed, Power Steering, Power Brakes, AM/FM Stereo, Radial Tires, Headliner Insulation Package, Argent Wheels, Tinted Glass, #F6464.

\$13,301



**1992 FORD
F-150 4x2**

Pickup, 6 Cyl., 5 Speed Transmission, Overdrive, Power Steering, Power Brakes, Air Conditioning, AM/FM Stereo Cassette, Radial Tires, Headliner, Tinted Glass, Rear Step Bumper, Low Mount Mirrors, #F6193.

\$12,587



**1992 ISUZU
NPR CAB
& CHASSIS**

135 HP Diesel, 5 Speed Transmission, 14,250 GVW, Power Steering, Power Brakes, AM-FM Stereo Cassette, 33 Gallon Fuel Tank, Tilt Steering, Exhaust Brake, Interval Wipers #3112.

\$17,654

Prices Include Rebates and Factory Incentives If Applicable. Tax and Tags Additional.

NEW HOLLAND

