

JONES CENTER

IS YOUR

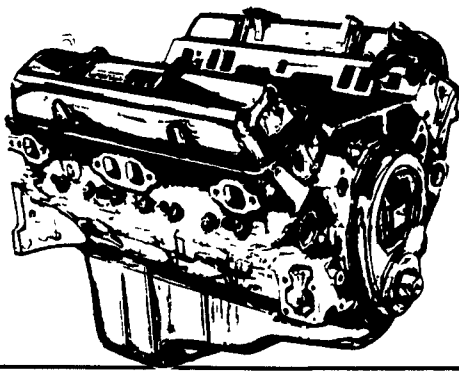
Goodwrench ENGINE HEADQUARTERS

GM GOODWRENCH 350 V8 1973-85
Part Number 10067353

New Engine - Not Rebuilt
37 Month or 50,000 Mile
Warranty

\$1199⁰⁰

New Engine - No Core Fee
Special Price



Call 394-0711 for prices on other New or Remanufactured
Goodwrench Engines. 2.5 Liter thru 454 cid. Gas and Diesel

- Full Line of Body and Mechanical Parts
- Over \$600,000 Inventory
- Nationwide Parts Locator Service
- Excellent Prices on Goodwrench Engines

Chevrolet - Pontiac - Olds - Buick - Cadillac - GMC

JONES GM PARTS CENTER

1335 Manheim Pike, Lancaster, PA 17604

Hours: Mon.-Fri. 7:30-5

(717) 394-0711



Mr. Goodwrench



Lift Axle, Granning 30,000lb air axle, 20" rubber, air up & down, very good condition, installation available. 717/359-9423.

Mack R Model RS700, excellent rust free cab, 237 engine with Jake, 5 speed trans, 34 rears, 433 ratio, air slide 5th wheel, all parts, priced to sell. Altoona, 814/942-3821 leave message.

Lancaster Farming, Saturday, July 11, 1992-C31

For Sale: Aluminum truck sleeper, 36"X7', \$600, Good shape, Nathan 716-595-3210.

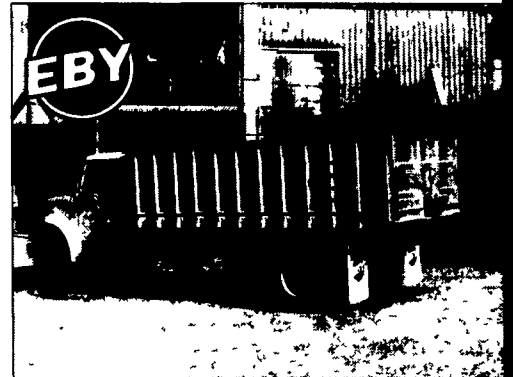
GMC Truck Transmission w/power take off, Serial #T169551, Model 2373721. Stephen L. Stoltz, 232 Farmdale Road, Kirkwood, PA 17536.

Metal ramp 20' long, 4' wide, ground to 55" in height, \$200 Yellow concrete car stops, \$10/each 717/354-4981 ask for Clyde or Elwood

WANTED 12' grain box w/hoist for F600 truck 607/359-3921

Top performance, Longest life, Highest resale value In the industry.

Carry heavier
grain loads
on your
truck chassis.



Lightweight
aluminum grain
bodies from
M.H. Eby are built
for long life.

- Sturdy post-and-sheet construction
- Low maintenance-never rusts.

- Many standard features, from mud flaps to built-in steps.
- Built to your requirements, from 12' to 24'

Distributor for  Roll Tarps

For more information or prices, call us in Blue Ball, PA at

(800) 292-4752

M.H. EBY, INC.

P.O. Box 127 Blue Ball, PA 17506
(717) 354-4971

WE ARE
30 MIN. from HARR.
30 MIN. from LANC.
30 MIN. from READING
45 MIN. from YORK

RTE. 422,
2300 WEST
CUMBERLAND ST.,
LEBANON, PA

CAR VILLAGE

LEBANON, PA

717-274-2000
FAX 717-274-2717

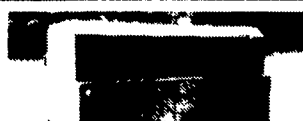
(Across From The
Bosco's Mall)

Business Hours
Mon-Fri. 9-9
Sat. 9-4

THIS IS JUST A SMALL PORTION OF OUR HUGE INVENTORY



Diesel Dually Super Cab 89 Ford
F-350 7.3 Diesel, 5 Sp., O/D, A/C,
Dual Tanks, 49,000 Miles, Real Strong



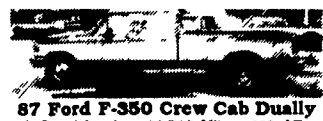
Very Nice 11 Ft. Enclosed
Morrison Utility Box Red Finish
\$2,995



87 Ford F-350 Crew Cab
Perfect- Only 56,000 Miles, 7.3 Diesel
5 Sp. O/D, A/C.



4 Wheel Drive 91 Ford F-350
Only 320 Miles, Short 137 Wheelbase,
60" C/A, 11,000 GVW



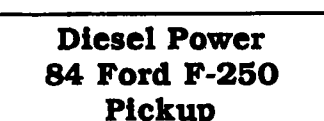
87 Ford F-350 Crew Cab Dually
A Good Looker, 39,700 Miles, 460 AT,
AC, 10,000 GVW, 4:10 Rear



Super Duty 89 Ford F-450 Cab
& Chassis 7.3 Diesel Heavy Duty,
5 Spd., 14,500 GVW, Long 161 Wheel Base
Only \$12,900



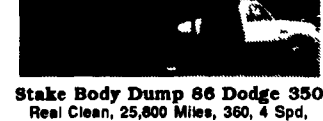
Cab & Chassis 92 Ford F-350
XLT Short Wheel Base, 7.3 Diesel,
5 Sp. O/D, A/C, 11,000 GVW, Only 46 Miles



Diesel Power
84 Ford F-250
Pickup
6.9 AT, 8600 GVW,
Dual Tanks



4 Door 4x4 89 Ford F-350
XLT Lariat, Only 12,200 Miles, 460
AT, AC, Loaded, A Beautiful Truck



Stake Body Dump 86 Dodge 350
Real Clean, 25,600 Miles, 360, 4 Spd,
12 Ft. Body Only \$10,900



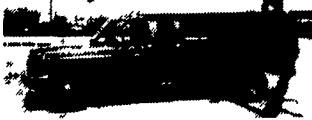
Box Truck - 89 Ford F-350
7.3 Diesel, AT, AC, 11,000 GVW
11 Ft. Aluminum Box



Haul It Away
Super Duty Dump
90 Ford F-450 Only 29,000 Miles
7.3 Diesel- 5 Sp. 14,500 GVW.



Heavy Chevy Special 4 Wheel
Drive, 89 Chevy 3500 Dually
6.2 Diesel, AT, AC, Silverado, Lots of
Chrome, Lots of Pull Power,
Buy Now Only \$15,500



88 Ford F-350 Stretch Cab Dually
A Good Towing Machine, 460 AT, AC,
Dual Tanks, 53,000 Miles



12 Ft. Stake Body With Tool Box
& Rear Lift Gate



85 Ford F-250 Super Cab Dually
8.9 Diesel, AT, AC
\$6,900



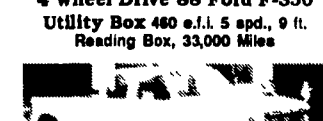
460 4x4 90 Ford F-250 XLT Lariat
Tough & Strong, 460 f.i., AT, AC, Trailer
Tow Pkg., Drive It



Super Puller - 91 Chevy 3500
Super Cab Aluminum Box, 6.9 Diesel,
4 Spd. A/C, 28,000 Miles



Heavy Duty 90 Ford F-350
XLT Lariat 4 Wheel Drive, 7.3 Diesel,
AT, AC, Dual Tanks, It's A Beauty,
Only 21,000 Miles



4 Wheel Drive 88 Ford F-350
Utility Box 460 e.f.i. 5 spd., 9 ft.
Reading Box, 33,000 Miles



5th Wheel Plate
\$150



4 Wheel Drive, Stake Body Dump.
87 Ford F-350 Diesel AT, 11,000
GVW, 10 Ft. Bed, 35,000 Miles



Utility Box 89 Ford F-350 32,500
Miles, 9 Ft. Box, V8, f.i., 5 Sp. O/D, A/C,
real clean



Super Cab Dually 90 Ford F-350
XLT Lariat, Like New, Only 11,000 Miles,
7.3 Diesel, AT, O/D, A/C, Captain Chairs



Diesel 4 Dr. Dually 90 Ford
F-350 XLT Lariat Perfect, 7.3 Diesel,
AT O/D, 29,000 Miles, 4:10 Rear