

1977 GMC General, full screw and 28' aluminum Hill dump trailer Good tires all around, current inspection, A-1 shape Used for farm products only Driver retiring 215/794-7259

1977 International Cargostar 1710-B, 16' flatbed, inspected till-4/93, good shape. 717-385-4694.

1976 Ford LN 800, gas engine, 33,000 GVW, 18' grain bed, PS, air brakes 410-452-5861

1976 TiBrook 26' Dump Trailer w/Teflon Liner, \$4500 215-588-7346

1974 Ford LN 600 w/16' stake body dump & lift gate. \$2000 908/359-5934

1970 F800 15' Grain Dump, air brakes, 100% road ready, \$4200 OBO. 717/530-8998

1972 Ford F350 12' Bed, 84,000 miles, one owner, good condition, 717-922-4168

1973 Ford V8 Cattle Truck w/12' cattle body, \$1500 STUMP ACRES 717/792-3216 York Co

16' Gooseneck Hillsboro Tri-Axle Dump Trailer Grain Tight Removable Sides 717-423-5903

1965 IH 14' grain dump, power steering and air brakes, good condition, \$1,500. (717)534-1253.

1969 Dodge V8 5sp 2sp rear 34,000 G.V.W. w/14' dump box 717-367-6496

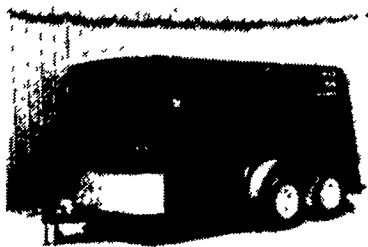
FOR SALE. 20' reefer box with side door, good condition, or would TRADE on low boy pintle hook trailer (717)433-3630

Fords & Macks with New 20 Ton NRC All Hydraulic Crane Complete with Underlift Under \$50,000 717-263-4139. A&B Garage, Inc Chambersburg, PA.

1978 Ford 700 truck and chasis, \$1,500. 1986 16,000# tagalong trailer, electric brakes, \$1,900 (215)286-6166

1975 International Loadstar 1700, 404, gas, PS, AM/FM, 5+2 trans, dual gas tanks, hyd dump, Heil grain body, 18' long, 40' sides, double doors and drop end gate, new clutch, elect ign, GVW 26,000 74,000 miles, \$8000 717-658-6109.

**NEW AND USED TRAILERS AT HOSTETTLERS**



**USED**

- 1972 Skidham 2 Horse Trailer, Rusty but Usable, a Handy Man Special..... \$495
- Kink 2 Horse Bumper Pull Trailer, Tack and Manger.....\$1,495
- 1986 Shoop 2 Horse Bumper Pull Trailer, Walk Through Design, 7' High, Feed Bags, Rear Ramp, Nice Trailer.....\$2,695
- 1989 Kiefer Renegade 12' Stock/Combo Trailer, Fiberglass Roof, Rubber Matting, Plywood Lining, Charcoal with Blue Striping, Beautiful Trailer in Excellent Condition.....\$2,795
- SAMPLE OF NEW TRAILERS IN STOCK**
- 2 Horse Express with Tack and Manger \$2,800
- 6'x16' Bumper Pull Livestock Trailer, Fiberglass Roof, 2 6000# Axles, Radial Tires, Treated Floor.....\$4,095
- 7'x16' Bumper Pull Aluminum Livestock Trailer, 6000# Rubber Torsion Axles with Electric Brakes and Radial Tires, All Aluminum Construction.....\$6,595
- 6'8" Wide x 20' Long Gooseneck Livestock Trailer, No Inner Fender Wells, 6000# Axles, Treated Floor, Beautiful Red..\$5,495

MORE IN STOCK CALL FOR DETAILS



**Hostetler Truck Bodies & Trailers**  
Rt. 322 Milroy, PA 17063  
(717) 667-3921

Our 52nd Year **INTERNATIONAL TRUCKS**  
Sales • Service • Parts



SALES - LEASING  
STATE INSPECTION  
ASE Certified Mechanical

**CENTRAL GARAGE INC.**

S. 2nd St., Womelsdorf, Pa. 19567  
**215-589-4581**



Sales-Service-Parts



Service - Parts

REPAIRS - All Make Trucks And Cars

**NEW TRUCKS**

- 1992 Nissan UD 2600.....26,000 GVW
- 1992 Nissan UD 1300, 5 Speed.....**SOLD**.....13,000 GVW
- 1991 Nissan UD 1100, 5 Speed.....11,000 GVW
- 1991 International 4600 Low/Pro.....21,440 GVW
- 1992 International 4900.....32,900 GVW

**USED TRUCKS**

- 1985 International 1600.....20,500 GVW .....\$5,900
- 1976 International Fleetstar, Automatic.....35,000 GVW .....\$7,500
- 1979 International **SOLD** 18-Ft. Body w/Boom Crane.....48,000 GVW .....\$17,500
- 1978 International .....19,200 GVW .....\$2,900

**PRE-OWNED CARS**

- 1991 Dodge Caravan - \$14,500
- 1990 Chevy **SOLD** Van/Loaded-\$14,500
- 1990 Olds Ciera - \$10,000
- 1986 Olds Firenza Sta. Wgn. - \$2,395
- 1985 Chevy Celebrity - \$2,495
- 1985 Ford Escort - \$1,695

**CAR SERVICE SPECIALS - LIMITED TIME ONLY**

LUBE, OIL & FILTER  
Only \$14.95

AIR CONDITION SPECIAL  
Check System For Only  
Leaks, Pressure And  
Add Up To 1 Lb. Freon \$24.95

ASSORTED NEW AND USED TRUCK BODIES FOR SALE!

- 1981 Ford F250 Dump Truck, V8, 4 Speed.....\$1,500 OBO
- 1974 Chevy Bucket Truck, 35', Stelco Light, New Pony Motor, Utility Body, V8, 5 Speed, PS, PB.....\$3,500 OBO
- 1974 C30 w/Plow And Salter...\$1,000 OBO
- 12' Trailer, 3,000 GVW.....\$300 OBO
- Promark Chipper w/23 HP Gas Power Feed, 360' Deck And Chute.....\$2,000 OBO
- (2) Flatbeds For Trucks, 10' And 8' 11 HP Wheelhorse Rear Engine Rider Tractor, Good Condition.....\$500
- Truck Topper w/Side Opening Doors, For Long Bed Domestic Pickup, Fair Condition.....\$90 OBO
- (4) Used Kohler Engines, Electric And Pull Start

(717) 365-3057



**1988 Big Valley Gooseneck Stock Trailer**  
20 Ft. With Divider, Excellent Condition  
**\$3,800**  
717-355-0436  
717-354-7992

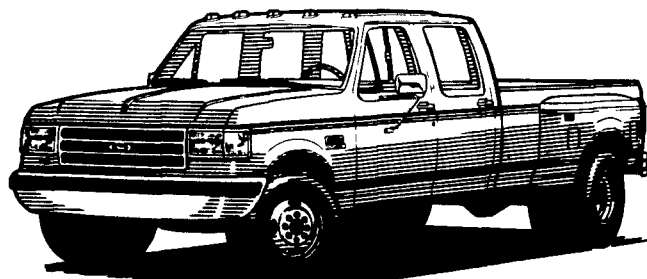
Mark VII - Pickups - Broncos - Bronco II - Stake Body - Crew Cab -

Custom Vans  
XLT  
Grand Marquis  
Marquis

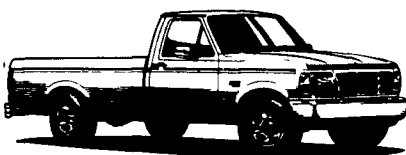
LYNX  
Topaz  
Diesel Pickups  
Mustang  
T Bird

**'92 FORD CREW CABS**

Now In Stock & Ready To Go!



'92 FORD F-150 PICKUP (#3648)  
Delivered Price **\$9,999**  
List \$12,037



'91 FORD F-350 C&C (#7499)  
Delivered Price **\$11,836**  
List \$15,743



Hurry! Last One In Stock!

**1992 FORD CONVERSION VANS ARE HERE!**



Many To Choose From!

Hi-Top And Low-Top In Stock.

\*Prices include applicable rebates plus \$500 cash or trade. Tax, tags and doc fees additional. Payments at 10.9% APR for 60 Months.



'84 FORD F-150 PICKUP  
V8, 4 Spd., PB, PS, #3641A  
SALE **\$4,998**



'86 CHEVY EL CAMINO  
V8, AT, AC, PW, Tilt, Cruise, 54,000 Mi.  
Was \$8,495  
NOW **\$7,998**



'85 FORD F-150 SUPERCAB  
6 Cyl., 4 Spd., PS, PB, #3581A  
Was \$6,498  
NOW **\$5,711**



'87 FORD RANGER XLT  
4 Cyl., AT, PS, PB, #P1360  
Was \$6,998  
NOW **\$6,411**



'89 FORD RANGER 4x4  
4 Cyl., 5 Speed, PS, PB, #3310A  
Was \$8,498  
NOW **\$7,998**



'87 FORD BRONCO II 4x4  
XLT, 6 Cyl., AT, AC, PB, PS, AM/FM Stereo, #3074A  
Was \$9,998  
NOW **\$8,877**



'90 FORD F-150 XLT 4x4  
6 Cyl., AT, AC, PS, PB, Tilt, Cruise #3329A  
Was \$13,998  
NOW **\$13,454**



'89 FORD F-150 4x4  
6 Cyl., 4 Spd., PB, PS, Only 35,000 Mi. #P1278  
Was \$11,998  
NOW **\$9,666**



'88 FORD E-350 CUBE VAN  
351 V8, AT, AC, PS, PB #P1308 Was \$12,998  
NOW **\$9,900**

Unless This Emblem Is On Your Car Or Truck You Probably Paid Too Much

9-9 Daily  
9-5 Sat.  
717-272-7671



**SHEEHY LEBANON**  
**SHEEHY FORD LINCOLN MERCURY INC.**  
20th & Cumberland St., Lebanon

Parts Dept. Open  
Daily 8-5  
Sat. 8-12  
717-273-8168

Tempo - Cougar - Continental - Town Car - 4x4 - Box Van - Rangers -