

### 30 COMPUTERS

IDM Compatible XT Clon 8088, 640K, 20MB, Hard Drive, 2-5/4 floppy drives \$800 w/additional printer modem lotus 123, Multimate Software \$1450 takes all. Sussex County, NJ 201-827-4672.

Used Laser Computer, IBM Compatible, 717/597-5623.

**IDM Compatible XT Clon 8088, 640K 20MB, Hard Drive, 2-5/4 Floppy Drives \$800 w/Additional Printer Modem Lotus 123, Multimate Software \$1450 Takes All. Sussex Co., NJ 201-827-4672**

Salad bar (ice cooled unit) for restaurant use, like new, \$300. 717/354-4981 ask for Clyde or Elwood.

WANTED: Contents of Old General Stores, Cigar Factories, Old Advertising, Attic Accumulations. I PAY CASH. Steve. 717-252-3591

Misc. hydraulic power packs, hydraulic motors, air tools and grinders. 717-359-9211 Evenings or Holidays 717-359-4798

**Pure Maple Syrup**  
\$30 - Gallon  
\$16 - 1/2 Gallon  
\$8.25 - Quart.  
Postage Paid  
**Hoffman Farm**  
RD 2, Box 310  
Wellsville, NY 14895

'88 Chevy Cheyenne 2500, 1/2 ton, 4x4, 350 Fl., auto, PB, PS, air, AM-FM cassette, 44,000 miles, black, excellent condition, \$9,950. 717-733-2873

1987 Dodge Ram, 250 pickup, 44,000 miles, 2 year warranty, 360 engine, AT, cap and trailer hitch. For information call (717)872-2134.

1989 F-250HD 4X4 351 Auto, AC, 8600GVW, 4500#, Front Axle, Posi-Traction, Excellent Condition, 58,000 Miles. \$9500 or Take Over Lease Payments 15 Months @\$348. 215-340-9989.

1990 International 24' roll-back, Danco body, IH 6-cyl. diesel, 30,000 GVW, 5-2 trans., 30,000 miles, like new, went out of business, \$27,500. 908/459-5773.

25' aluminum dump trailer, 100% road ready, \$4,000. (717)532-8363.

28' aluminum dump trailer, grain chute, excellent condition, \$7,500. (717)532-8363.

34' Gooseneck Tri-Axle Trailer, 18,000 GVW, Steel Bed, \$3000. 717-762-7940.

'76 Chevy hay and grain stake body dump, excellent condition, (215)536-8624

'79 GMC roll back, 7000 series, tilt hood, 30,000 GVW, 4 year old Jerr-Dan S10, 24' body, 5-2 air brakes, \$15,000. 908-788-5022.

80&81 Mack tractors: box & flat trailers; Detroit motors, Fuller transmission, 38lnt rear ends, Pete air-ride; roto-phase; electric motors & starters & switches Clearfield Co (814)672-3196

'85 Chevy Scottsdale C20 Suburban, 350, auto, PB, PS, air, AM-FM, 46,000 original miles, excellent condition, \$7,950 717-733-2873

'90 Ford E250 Cargo Van, 300 EFI, auto., PB, PS, 31,000 miles, like new, \$10,500. 717-733-2873

1984 C10 Chevy pickup truck, PS, AT, good shape, new inspection, clean, 305 runs good w/Leer fiberglass cap included. Call after 6pm, (717)859-1427.

'88 Dodge Dakota LE, 4x4, 3.9, V6, auto., PS, PB, PW, PDL, cruise, tilt, air w/ fiberglass topper, red & charcoal, 46,000 miles, excellent condition, \$8,975. 717-733-2873

'88 Dodge Ram Charger 4x4, 360 auto, PB, PS, air, AM-FM cassette, trailing package, Michelin radials, 46,000 miles, excellent condition, \$8,975 717-733-2873

'88 GMC Rally Wagon, 8 passenger window Van, 350 Fl., auto., PB, PS, air, AM-FM, privacy glass, dark green, 26,000 miles, excellent condition, \$9,950. 717-733-2873

'89 Ford F250, 1/2 ton pickup, 300 EFI, 5 spd, PS, PB, AM-FM, dual tanks, 6,600 GVW, 45,000 miles, charcoal, excellent condition, \$7,950 717-733-2873

8' Dual Axle Utility Trailer, all steel w/brakes & sides, 4000 lb. capacity, \$750. 717/653-8054 or 717/285-2308.

'90 Chevy Beauville Extended 11 passenger Van, 350 Fl, auto, PB, PS, PW, PDL, cruise, tilt, dual air, AM-FM cassette, 28,000 miles, charcoal, excellent condition, \$13,995. 717-733-2873

DUMP BODY, 11' Snyder body w/hoist, air tailgate & electric tarping system, very good condition, installation available 717/359-9423

FACTORY AUTHORIZED FEATHERLITE HORSE STOCK EQUIPMENT TRAILERS & TRAILER HORSE TRAILER DEALER, R.J CACKOVIC SALES, MIDDLETOWN, PA 717/948-0222.

1978 Chevy custom DeLuxe 30, 71,800 miles, 350, P.S., 3 speed with low, hyd. pump, steel bed, meyer snow plow. \$4900. 717-658-6109.

### 31 NOTICE

WANTED: Small commercial baking oven. CristB Peachey, RD#1, Box 356, Belleville, PA 17004. (717)483-6620

#### INVITATION FOR BID

The Centre County Conservation District is requesting bids for the construction of a Manure Management System (excavation and/or waste storage structure) which is to be located in Halfmoon Township, Centre County. Construction of the project will be funded in part by the Chesapeake Bay Program and is expected to begin within the remainder of 1992.

Prospective contractors can receive a bid package containing the instructions to the bidder, sample contract form, plans (drawings) and specifications for the project and a bid sheet. Site showing will be indicated on bid sheets.

All bid openings will be held at the Centre County Conservation District office in Bellefonte.

Small, minority and women's business enterprises are encouraged to respond to this invitation for bids.

To obtain a bid package contact the Centre County Conservation District at: (address could be subject to change).

**Centre County Conservation District**  
1207 Zion Road, Suite 3  
Bellefonte, PA 16823  
(814) 355-6817

If your company has not already contacted our office or there is no response from a representative of your company, we will assume that you are not interested in a bid package and have your name and address removed from the list.

### 32 MISCELLANEOUS

1 Mig 3 Phase Welder- A-1 Shape \$1000 717-263-4139 A&B Garage, Inc., Chambersburg, PA

1 Selco 5HP Pressure Washer, 3 Phase w/New Hose- A-1 Condition \$1000 717-263-4139 A&B Garage, Inc Chambersburg, PA

1 Used Wet Line Complete- Set Up for 10 Speed Roadranger Transmission \$650 717-263-4139 A&B Garage, Inc

40 HP and 75 HP electric motors, 220V-440V, 3 phase w/controls, 4 hydraulic pumps \$275/ea, Dan axial blower 5 HP 3 phase w/controls, new \$550 908-453-2088

4 Headblocks Frick Sawmill, 717/658-3204 after 6pm Snyder Co

FAT-HEAD MINNOWS FOR BAIT OR STOCKING, \$10/hundred, \$75/thousand Addison, NY 607/359-3921

Farm Toys-Collector Series, Show Tractors, Pedal Tractors, Trucks-for sale at all times. Visit our large display during business hours Wengers Farm Machinery, Inc, 251 S Race St, Myerstown, PA 717/866-2130.

Local Grandfather's Clock signed "John Esterlie, New Holland". 8 day, center sweep, moon, wonderful mahog Hepplewhite case, 8'3" tall 215-383-5597.

New Bushnell Scope 4x12 power w/sportview and range finder, \$150 OBO Call between 7 45 and 8 00am Ask for Daniel 717/529-6553

Pole length firewood for sale We deliver in PA, hauled by tri-axle 717-349-2509

SAVE MONEY ON WOODWORKING MACHINES!

Band saws, jointers, planers, routers, scroll saws, drill presses, table saws, sanders, lathes, shapers, dust collectors & more in stock 30 Day Free Trial! 1 Year Warranty Call For Low Prices 1-800-445-4669 Terre Hill, Pa

WANTED Mist or fog system for greenhouse, 717/443-7892

Wind Power Ultinator KW 120-20 PTO, Wind Power Ultinator KW 35 continuous KW20 PTO on Trailer 717-786-3807

**PAINTED STEEL ROOFING & SIDING**

- Galvanized/Galvalume
- 29/26 Gauge
- 3 Major Brands Available
- Large Stock Trim & Sheet
- 5V Crimp Metal

**AS LOW AS \$32<sup>00</sup> per/sq.**

**Conestoga Building Supply**  
New Holland, PA 17657  
717-354-2613 or 1-800-544-9484

**BOAT COVERS** from \$39.00, call 1-800-874-2928 with boat size. Dealers invited.

#### TIRONIE'S TARPS

Fabric Covers for anything, Truck, Farm, Industry, also R.R. Ties available.

**LIVE GAME FISH** Fingerlings and Adults. Large and Small Mouth Bass, Spotted and Rock Bass, Bream Crappies, Trout, Channel Cat, Bullheads, Walleys, Perch, Minnows, Northern Pike, Muskies, Red Gills, Mullet, Carp, Eels, Turtles, Frogs, Israeli Carp. Also Aquatic Plants and Water Lillies COLORFUL Catalog \$2.00.

Truck, Air and Parcel Post Delivery  
**ZETTS FISH HATCHERIES**  
DRIFTING, PENNA. 16834  
Phone: 814-345-8357

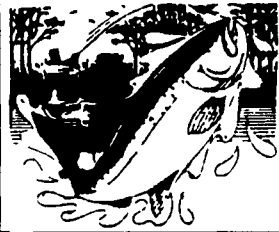
**FOR SALE**  
Grocery Store Fixtures,  
Checkouts, Freezer Coffin  
Cases, Refrigeration Cooler  
Cases.

**Phone (717) 392-0635**

**Ken Groff**  
At Weaver Outlet Store  
1929 Lincoln Hwy. East  
Lancaster, PA 17602

#### WOODLYNBROOK TROUT FARM

Weatherly, PA  
Phone: (717) 427-4052 or 4053



Fish for Stocking Table Trout

#### FROM THE PIONEERS OF COTTAGE TOILETS

Several models available: Non-electric to low flushing. WHY THE MISERY? Enjoy the comforts of an odorless biological toilet in your cottage.



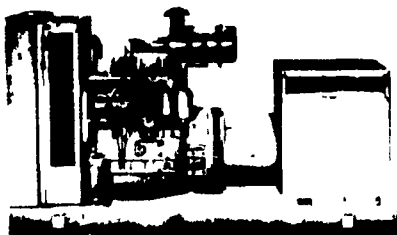
The TROPIC! A beautiful design made of durable fiberglass Requires no water, no chemicals, no septic tank Highest quality with a 2 year warranty

**ECO-TECH**



157 Knoxlyn Road  
Gettysburg, PA 17325  
(717) 334-0224

#### POWER SYSTEMS ELECTRIC, INC.



**SPECIALIZING IN GENERATOR SALES, SERVICE AND RENTALS**  
**(717) 933-5617**

250 KW, Cummins, low hrs. diesel  
130 KW, Onan, like new diesel  
100 KW, P-S-E, like new diesel  
35 KW, P-S-E (New) L-P-G  
15 KW, Onan, L-P-G  
35 KW, Katolight, PTO used  
20 KW, Winco, PTO used  
15 KW, Pincor, PTO used

### 33 RECREATIONAL VEHICLES

27' Winnebago motorhome, fully equipped, excellent condition, 27,000 miles, \$22,000 OBO or will take trade, car, truck, land. Call for details. 717-397-1186 after 5PM.

'85 Southwind motorhome, 27' self-contained, excellent condition. Must sell, health reasons, \$17,900. Lancaster. 717-656-0503.

### 34 AUTOS

1986 Century Limited, 4DR, 77,000 miles, runs great, \$2800; 1989 Escort LX, 4DR, 73,000 miles, runs great, \$3800. 717-865-4695.

1990 Cavalier CL, 2 liter, 4 cylinder, 4DR, 32,000 miles, AT, PS, PB, AC, nice car, runs and drives, front end damage, \$2800 717-865-4695

Eld Cadillac, touring car, sunroof and everything, 62,000 miles 215-469-9633

Model A Ford sedan. ORIGINAL B title (412)479-2762

**Sears Diagnostic Automotive Oscilloscope w/ Alternator Test, Like New \$425 Drum Puller KD2271 \$10 (4) LT235/85R16 Range E All Season 25% Tread Okay for Spares or Trailers \$40 Sussex County, NJ 201-827-4672**

90 Olds Cutliss 4 Dr, Blue, Quad 4 Aluminum Wheels loaded, 10,000 miles \$8,300

90 Buick Regal and Sport Limited, Roof Rack, 10,000 miles \$10,950 **SOLD**

90 Pont. 6000 LE 4 Cl. Loaded, Gray, 4 Dr, 27,000 Miles \$6,400

90 Buick Skylark, Blue, 22,000 Miles, 4 Dr. \$6,100

90 Ford Escort LX 4 Dr., AT, AC, 17,000 Mi., Dk. Blue \$4,650

88 Plymouth Reliant 4 Dr., White, 45,000 \$2,995

86 F-150 V8, 4 Spd., AC \$4,200

**Burkholders Auto**  
Danville, PA  
717-437-3848

### 35 TRUCKS & TRAILERS

'87 Chevy C10, 1/2 ton, 4x4, 305 Fl., auto, PB, PS, AM-FM, 6,250 GVW, rally whls., red & white, excellent condition, \$8,975. 717-733-2873

'87 Chevy C10 1/2 ton pickup, 305 FI, HD, 4 spd., PS, PB, AM-FM, 47,000 miles, dark blue, \$6,700 717-733-2873

**Birchwood Auto & Truck Sales**

P.O. Box 322 • Main Street  
Schaefferstown, PA 17088  
**(717) 949-6513 FAX #949-3936**

1991 Ford Ranger XLT 4x4 Blue/Silver, 17,850 Miles, V6, Auto, Tilt, Cruise, AM-FM Cass., Alloy Wheels..... **\$11,400**

1991 Chevy S-10 Durango, Red, 26,417 Miles, 4.3 V6, Auto, AC ..... **\$8,900**

1990 Chevy S-10 Tahoe Ext. Cab, 4x4, Blue, 19,960 Miles, 4.3 V6, Auto, AC, AM-FM Cass **\$12,900**

1989 Ford F150 Custom 4x4, Blue, 32,494 Miles, F.I. 302, Auto, AC, AM-FM Cass ..... **\$10,900**

1989 Dodge Ram 350 Maxi Van, White, 30,291 Miles, V8, Auto, AC, AM-FM, 15 Passenger .... **\$9,800**

1988 Ford Ranger XLT Supercab, 4x4, Grey, 69,811 Miles, V6, 5 Spd, AC, CC, Tilt ..... **\$8,400**

1988 Ford Rancher XLT, Blue, 46,314 Miles, 4 Cyl., 5 Spd., AM-FM Cass ..... **\$6,400**

1988 Chevrolet Silverado 10, Blue 37,765 Miles, 5.7 V8, Auto, AC, PW, PDL, Tilt, Cruise, AM-FM Stereo ..... **\$9,400**

1988 Ford Bronco II, Red/Silver, HI Miles, V6, 5 Spd, AC .. **\$4,800**

1987 Ford F-250 4x4 XL 8600 GVW Light Blue, 39,485 Miles, 351 V8 Auto, PS, PB, AM-FM - Matching Cap..... **\$10,400**

1984 Chevy C30 14 Ft. Cube Van, White, 39,697 Miles, 5.7 V8, Auto ..... **\$6,900**