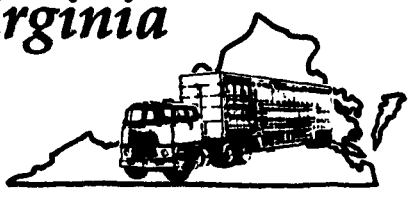


Virginia



Cattle & Hogs

Southwest Virginia Livestock Summary

Wytheville, Va.

Tuesday, June 23, 1992

ALL TRENDS COMPARED TO LAST TUESDAY
 SLAUGHTER HOGS 21 HEAD - BARROWS AND GILTS \$3.00 HIGHER.
 BARROWS AND GILTS US 1-3 200-250 LBS 43.10 BOARS 18.00
 SLAUGHTER CATTLE 64 HEAD - SLAUGHTER COWS MOSTLY STEADY.

SLAUGHTER COWS 55 HEAD CUTTER & BNG.UT. 1-3 43.00-47.50
 BRKG.UT. & COMM. 2-4 44.00-50.25
 CANNER & LOW CUTTER 1-2 38.00-43.50.

SLAUGHTER BULLS 9 HEAD 1-2 900-1300 LBS --- 1-2 1300-1600 LBS 54.00-59.25 1-2 1600 LBS & OVER 53.75-58.50.

TOTAL LAMBS 251 HEAD - SLAUGHTER LAMBS \$7.00 LOWER.
 SLAUGHTER LAMBS 98 HEAD WOOLED CHOICE AND PRIME 95-125 LBS 60.00 GOOD AND LOW CHOICE 75-90 LBS 50.00 FEEDER LAMBS 132 HEAD CHOICE AND FANCY 70-85 LBS 55.00 CHOICE AND FANCY 60-70 LBS 52.00 EWES AND RAMS 21 HEAD SLAUGHTER EWES ALL GRADES 14.00-18.00
 10 HEAD OF GOATS \$30.00-74.00 MOSTLY \$36.00-46.00 PER HEAD.

FEEDER CATTLE 127 HEAD - FEEDER STEERS AND FEEDER HEIFERS MOSTLY STEADY. STEERS; MEDIUM 1 MED.&LARGE 2 200-300 90.00-92.00 --- 400-500 84.00-87.00 80.00-83.00 500-600 --- 77.00-79.00 600-700 78.00-79.00 --- HOLSTEIN STEERS; MED.&LARGE 1-2 300-500 LBS 74.00-78.00 500-700 LBS 62.50 700-900 LBS 58.50 900-1100 LBS 55.25-56.00.

HEIFERS; MEDIUM 1 MED.&LARGE 2 200-300 --- 80.00 300-400 84.00-87.00 78.00-82.00 400-500 --- 75.00-80.00 500-600 77.00-80.00 68.00-73.00 600-700 --- 69.00-71.50
 FEEDER BULLS; MEDIUM 1 300-400 LBS 92.00-94.00 500-600 LBS 80.00-81.00 COWS WITH CALVES 5 PAIR; M&L-1, FEW 2, 4-7 YRS OLD 875-975 LBS WITH CALVES 95-200 LBS \$585.00-750.00 PER PAIR. BABY CALVES RETURNED TO FARMS 12 HEAD NEWBORN TO 4 WK OLD \$70.00-150.00 MOSTLY \$100.00-135.00 PER HEAD.

Southeast Virginia Livestock Summary

Southside (Blackstone) & Smithfield, Va.

Wednesday, June 24, 1992

ALL TRENDS COMPARED TO LAST WEDNESDAY SLAUGHTER HOGS 198 HEAD - NO TRENDS REPORTED.
 BARROWS AND GILTS US 2-4 250-300 LBS 45.00 SOWS US 1-3 300-500 LBS 35.75-36.90 US 1-3 500 LBS & OVER 32.00-36.30 BOARS 32.50-43.00.

SLAUGHTER CATTLE 50 HEAD - NO TRENDS REPORTED

SLAUGHTER COWS 42 HEAD CUTTER & BNG.UT 1-3 44.50-50.50
 BRKG.UT & COMM. 2-4 44.00-51.25
 CANNER & LOW CUTTER 1-2 40.00
 SLAUGHTER BULLS 8 HEAD - 1-2 900-1300 LBS 52.00-58.50 1-2 1300-1600 LBS 58.00-64.00 1-2 1600 LBS & OVER 65.50.

TOTAL LAMBS 66 HEAD - NO TRENDS REPORTED. SLAUGHTER LAMBS 40 HEAD SPRING CHOICE 85-125 LBS 60.00 FEEDER LAMBS 26 HEAD CHOICE AND FANCY 60-70 LBS 56.00-62.00.

50 HEAD OF GOATS AT SMITHFIELD KIDS - \$24.00-45.00 PER HEAD
 YEARLINGS - \$33.00-37.00 PER HEAD
 NANNIES - \$41.00-46.00 PER HEAD
 BILLIES - \$44.00-46.00 PER HEAD.

FEEDER CATTLE 193 HEAD - NO TRENDS REPORTED. STEERS:

MEDIUM 1 LARGE 1 MED.&LARGE 2 300-400 89.00-96.50 89.00-93.00 85.00-93.50 400-500 83.00-89.25 83.00-87.00 --- 500-600 78.00-85.50 78.00-85.50 79.00 600-700 74.00-80.50 74.00-80.50 --- HOLSTEIN STEERS; MED &LARGE 1-2 300-500 LBS 71.00-78.50

HEIFERS, MEDIUM 1 LARGE 1 SMALL 1 MED.&LARGE 2 200-300 88.00-89.00 --- --- 85.00-94.00 300-400 75.00-81.50 75.00-81.50 73.00-80.00 71.50-77.00 400-500 72.50-79.00 72.50-79.00 68.50-69.00 67.00-75.00 500-600 72.50-78.00 72.50-78.00 68.00-72.00 66.00-73.50 600-700 67.00-69.00 67.00-69.00 66.00-70.00 55.00-62.50 FEEDER BULLS; MEDIUM 1 LARGE 1 SMALL 1 MED &LARGE 2 200-300 LBS 96.00-101.00 96.00-101.00 77.00-83.00 --- 300-400 LBS 80.00-91.00 80.00-91.00 72.00-81.00 --- 400-500 LBS 79.00-83.00 79.00-83.00 63.00-71.00 76.00-78.00 500-600 LBS 73.00-78.50 73.00-78.50 65.00-67.50 61.50 700-900 LBS --- --- 67.50 --- COWS RETURNED TO FARMS 8 HEAD; M-1, 6-10 YRS OLD 700-900 LBS \$44.00-62.50 PER CWT. COWS WITH CALVES AT SIDE 5 PAIR; M-1&2, 6-10 YRS OLD 750-1050 LBS WITH CALVES 90-190 LBS \$650.00-700.00 PER PAIR. BABY CALVES RETURNED TO FARMS 22 HEAD NEWBORN TO 4 WKS OLD \$45.00-105.00 1 AT \$135.00 PER HEAD. OVER 100 LBS \$105.00-120.00 PER CWT.

Virginia Weekly

Richmond, Va.

Wednesday, June 24, 1992

WEEKLY REVIEW IN VIRGINIA: REVIEW OF VIRGINIA DIRECT HOGS FOR THE PERIOD JUNE 18 - 24, 1992. RECEIPTS FOR COUNTRY BUYING STATIONS IN VIRGINIA FOR THE PERIOD TOTALED 1553 HEAD RECEIPTS FOR DELIVERY TO THE PLANT (WITHIN A 30 MILE RADIUS) FOR THE PERIOD TOTALED 5913 HEAD.

THE VIRGINIA DIRECT HOG MARKET FOR WEDNESDAY JUNE 24, 1992 CLOSED \$1.00-3.00 HIGHER COMPARED TO LAST WEDNESDAY'S TRADING.

BARROWS AND GILTS: VIRGINIA COUNTRY POINTS U.S. 1-3 220-250 LBS 44.00-48.00 LOCAL PLANT DELIVERED (30 MILE RADIUS).

US 1-2 220-250 LBS. 46.00-47.00 FEW HIGH AS 48.50 US 2-3 220-250 LBS. 45.00-46.00 FEW DOWN TO 43.00 US 1-3 200-210 LBS. 42.00-43.00 US 1-3 210-220 LBS. 44.00-45.00 US 2-4 250-260 LBS. 43.00-44.00 US 2-4 260-270 LBS. 41.00-42.00 US 3-4 270-280 LBS. 39.00-40.00 US 3-4 280-300 LBS. 37.00-38.00.

SLAUGHTER STEERS AND HEIFERS 2%; SLAUGHTER COWS 22% SLAUGHTER BULLS 3%, SLAUGHTER CALVES AND VEALERS 0%; FEEDER CATTLE UNDER 600 LBS 58%, OVER 600 LBS 15%.

PRICE RANGES FOR VIRGINIA

WEEKLY AUCTIONS SLAUGHTER CATTLE: STEERS: CHOICE 2-3 1100-1300 LBS 72.00-75.25 CHOICE 2-3 1300-1450 LBS 73.00-75.25 CHOICE 2-3 1450-1600 LBS 66.75-72.75
 HEIFERS: CHOICE 2-3 950-1100 LBS 69.50-71.00 CHOICE 2-3 1100-1300 LBS 68.00-73.00 CHOICE 2-3 1300-1355 LBS 69.00-76.00
 SLAUGHTER COWS UTILITY & COMMERCIAL COWS 44.00-55.00.

SLAUGHTER BULLS BULLS - 1-2 900-1300 LBS 56.00-66.00 FEW 48.00 1-2 1300-1600 LBS 54.00-63.75 1-2 1600 LBS & OVER 55.00-69.25 FEW 53.75.

SLAUGHTER CALVES AND VEALERS VEALERS - HIGH CHOICE & PRIME 200-350 LBS ----- GOOD AND CHOICE 200-350 LBS 88.00-94.00 CALVES - GOOD AND CHOICE 250-500 LBS 76.00-85.00.

SLAUGHTER LAMBS HIGH CHOICE & PRIME 95-125 LBS SPRING 60.00-71.50 HIGH CHOICE & PRIME 95-125 LBS WOOLED 58.25-60.00
 SLAUGHTER HOGS US 1-3 200-250 LBS 39.50-45.00 SOWS US 1-3 300-500 LBS 25.00-33.50 500 LBS & OVER 30.00-32.00.

FEEDER CATTLE STEERS: MEDIUM 1 HEIFERS: MEDIUM 1 200-300 LBS 88.00-118.00 300-400 79.00-87.00 300-400 85.00-101.00 400-500 75.00-86.00 400-500 82.00-96.00 500-600 71.00-83.00 500-600 78.00-90.50 600-700 70.00-75.00 600-700 75.00-85.00 700-800 67.25-73.00 700-800 72.00-79.50 800-900 800-900 68.00-76.25.

GLENWOOD METAL FORMING

809 Glenwood Drive, Ephrata PA 17522
717-733-9590

Roofing And Siding

29 Gauge Galvanize 29 Gauge Painted
 26 Gauge Galvalume 26 Gauge Painted

New 409 Stainless Steel Roofing

All Panels Cut To Length - Coverage 36" Width

We Also Stock The Following Items:

- Pre-Hung Doors
- Ridge Vents
- Agri Build Windows
- Ridgolators
- Roll Door Track
- Trolleys and Hardware

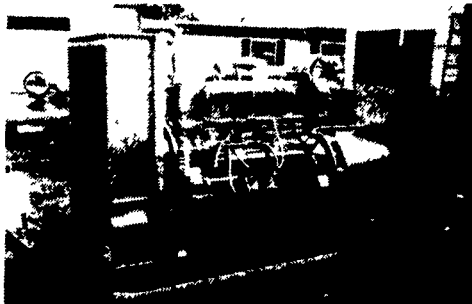
A new Product In Our Line

STANDING SEAM ROOFING

Manufactured at the job site.

NOW YOU CAN CALL US TOLL-FREE AT
1-800-582-9956

MARTIN MACHINERY



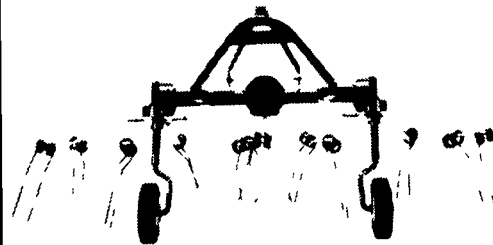
GENERATORS

Sales ★ Service ★ Rentals
 ★ Complete Generator Systems
 ★ PTO ★ Portables ★ 2-1600 KW
 "We Service It If You Have It And Sell It If You Need It"

34 W. Mohler Church Rd.
 Ephrata, PA 17522

Tel: 717-738-0300
 Fax: 717-738-4329

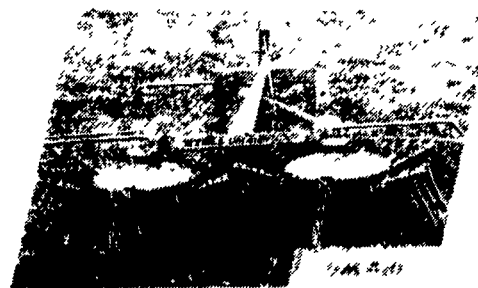
TONUTTI HAY TEDDERS



TOW TYPE MODELS AT LOW PRICES
 2 ROTOR 8'3" - 10' WIDTHS
 4 ROTOR 14 1/2' - 16 1/2' WIDTHS
 BALLOON TIRES AVAILABLE

STOLL HAY MAKER

COMBINATION RAKE & TEDDER



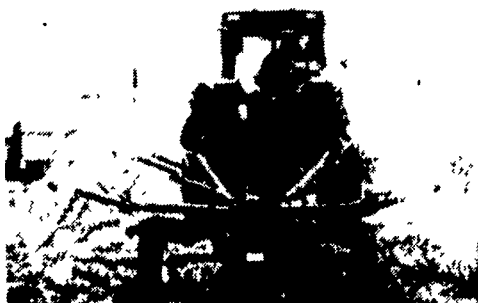
10' Tedder - Gentle Action
 13' Rake - Saves Leaves
 (Stoll-Sold & Serviced by Todd for 3 years)

TODD TANDEM RAKE HITCH



- Allows pulling two parallel bar (basket) rakes in tandem
- Hydraulically steerable rear axle will swing the rear rake as much as 10 feet to the left or right of center and allow transporting both rakes in-line behind tractor
- Two windrower swathes can be raked into one windrow
- Two single windrows can be raked in one pass
- The Tandem Hitch comes with tires, wheels, cylinder hoses and jack as standard equipment

TONUTTI HAY RAKES



TOW OR 3 PT.-V RAKES
 7 1/2' to 22' units available. Hundreds of dollars less than competition.

(Sovena & Tonutti Sold & Serviced by Todd for 14 Years)

TODD FARM EQUIPMENT, Inc.

(Equipment Distributors) FOR OVER 75 YEARS FARM EQUIPMENT DIVISION HAGERSTOWN, MD (301) 791-0422

PRO GENETICS

Bonus Maker Boars

Offering Duroc, Blackline & Maternal Line Boars

FULLY TESTED & INDEXED • LEAN & MUSCULAR
 RAISED IN CENTRAL PA

For Information And Prices Contact:

"J.J." JARMON

(PA Toll Free) 1-800-468-5524 or (717) 367-1525



419 West High Street
 Elizabethtown, PA 17022