

# NDB Elects Officers

WASHINGTON, D.C. — Dairy farmers serving on the National Dairy Promotion and Research Board met at their annual meeting May 20 to elect new officers.

Santa Teresa, N.M., dairy farmer James H. Loper Jr. was elected chairman. Loper, who milks 300 cows, has served on NDB for two years and last year as vice-chairman of the market and economic research committee. He also serves on the Board of Directors of Associated Milk Producers, Inc. and the United Dairy Industry Assoc.

Robert Giacomini, A Point Reyes Station, Calif. dairy farmer, was re-elected to the vice-chairman post. A three-year member of NDB, Giacomini milks 450 cows and serves on the board of Western United Dairyman Assoc.

NDB members re-elected Sylvia Hemanuer, Plymouth, Wis. dairy farmer, to the post of secretary. Hemanuer, also a three-year

board member, milks 80 cows. She is also a member of the Wisconsin Milk Marketing Board.

Five-year NDB member Leo O'Brien Jr. was re-elected as treasurer. He milks 64 cows in South Burlington, Vt. and served as chairman of the NDB's finance and administration committee last year.

Committee assignments were made, and chairs and vice-chairs were elected as follows:

### Advertising and Sales Promotion

Chair- William Underwood, Tully, N.Y.; vice chair- Ronald Quinn, Tulare, Calif.; Frederick Anding, Hudson, Wis.; Francis Gregerson, Longmont, Colo.; Sylvia Hemanuer, Plymouth, Wis.; Steve Hofman, Modesto, Calif.; Elwood Kirkpatrick, Novi, Mich.; Harry Papageorge, Ogden, Utah; and Steve Plenge, Shepherdsville, Ky.

### Dairy Foods and Nutrition Research

Chair-Raymond Johnson, Schaghticoke, N.Y.; vice chair-Harold Reiff, Burnettsville, Ind.; John Malcheski, Pulaski, Wis.; Timothy O'Harrow, Oconto Falls, Wis.; Mary Parente, Chino, Calif.; John Peachey, Myakka City, Fla.; Harold Rice, DuQuoin, Ill.; Paul Rollin, Burrell, Calif.; Ervin Silvers, Albany, Minn.

### Market and Economic Research

Chair-Jim Lefebvre, Elk River, Minn.; vice chair- Penny Hallowell, Pipersville, Penn.; Todd Arant, Bowman, S.C.; James Cook, Evergreen, Ala.; Harold Lenhart Sr., Thurmont, Md.; Leo O'Brien, South Burlington, Vt.; Jerome Servias, West Salem, Wis.; John Spreng, Sr., Bucyrus, Ohio.

### Public Relations and Nutrition Education

Chair-Victoria Coughlin, Waterton, Wis.; vice chair- Alvin Sherman, Coupeville, Wash.; Robert Gaebe, New Salem, N.D.; Bob Giacomini, Point Reyes Station, Calif.; Maynard Lang, Brooklyn, Iowa; Myron Schmidt, Newton, Kan.; Tim Volk, Battle Creek, Neb.; Horace Waybright, Gettysburgh, Penn.; Kay Zeosky, Turin, N.Y.

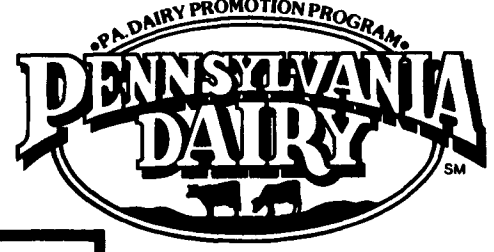
### Export Enhancement

Chair- Hofman, vice chair- Gaebe, Cook, Coughlin, Lang,

Rollin, Sherman, Underwood and Volk.

The officers and committee chairpersons comprise the finance and administration committee. O'Brien was elected chairman and Lefebvre as vice chairman.

The National Dairy Board, comprised of 36 dairy farmers from across the nation, develops and administers a coordinated program of promotion, research and nutrition education to strengthen the dairy industry's position in the marketplace. This effort is financed by America's dairy farmers.



## A & C Diffenbach Auction Inc.

100 West Jackson Street • Box 186 • New Holland, Pennsylvania 17557  
Office: (717) 355-7253 • FAX: (717) 355-9547

**HAY & GRAIN SALE EVERY MONDAY - 10:00 A.M.**

WED., JULY 1	WINROSS TRUCK & FARM TOYS	6:30 P.M.
TUE., JULY 7	WHOLESALE FURNITURE	6:30 P.M.
FRI., JULY 10	FARM EQUIPMENT & SUPPLIES	9:00 A.M.
TUE., JULY 21	QUILT, CRAFT, & BUGGY	9:00 A.M.
WED., JULY 22	QUILT, CRAFT	9:00 A.M.

EQUIPPED FOR AN AUCTION AT YOUR PLACE OR OURS  
ALAN DIFFENBACH AUCT. - AU2258-L



**Notice Of Time Change**  
(Hay Sale)  
Starting Jan. 1, 1992  
(New Year's Day)

Hay And Straw Sales Will Start  
At 10 A.M. Every Wed.

**GOOD'S AUCTION**  
111 North Maple Ave.  
Leola, PA 17540  
717-656-8911  
717-656-9554

**FOR SALE**  
Kiln Dried  
**WOOD SHAVINGS**  
and  
**SAWDUST**

- Bulk Loads Delivered
- Reasonably Priced

**717-653-5935**

*J.D. Martin inc.*  
Mount Joy, PA



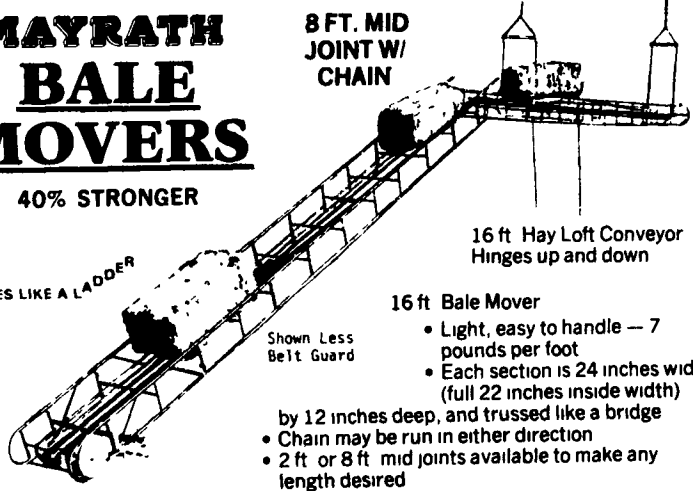
"Quality Conveying Equipment For Over 30 Years"

## MAYRATH BALE MOVERS

40% STRONGER

HANDLES LIKE A LADDER

8 FT. MID JOINT W/ CHAIN

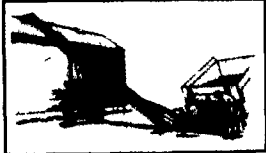


16 ft Hay Loft Conveyor  
Hinges up and down

16 ft Bale Mover

- Light, easy to handle — 7 pounds per foot
- Each section is 24 inches wide (full 22 inches inside width) by 12 inches deep, and trussed like a bridge
- Chain may be run in either direction
- 2 ft or 8 ft mid joints available to make any length desired

## ALL PURPOSE DOUBLE CHAIN CONVEYOR



SHOWN WITH OPTIONAL EQUIPMENT

Also Available Single Chain Conveyor  
Single Chain In Stock

## Swing Away AUGERS

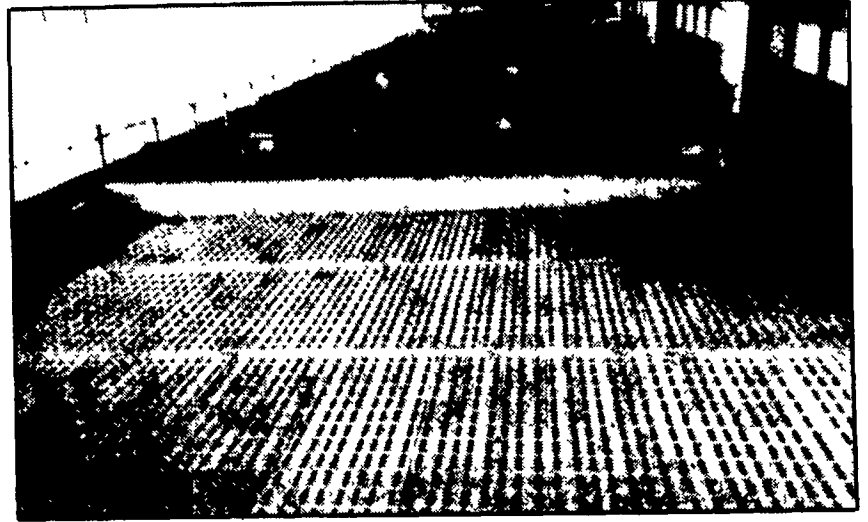
Designed and built for longer lasting performance  
AVAILABLE IN DIFFERENT SIZES

- ONE PERSON CAN POSITION FROM TRACTOR SEAT
- HYDRAULIC LIFT POSITIONS AUGER MUCH FASTER THAN TIME CONSUMING HAND CRANKING
- DIRECT DRIVE ELIMINATES MANY WEAR POINTS

**RYDER SUPPLY CO.**

P.O. Box 219  
Chambersburg, PA 17201-0219  
Phone 717-263-9111

## • Agricultural • Commercial • Residential



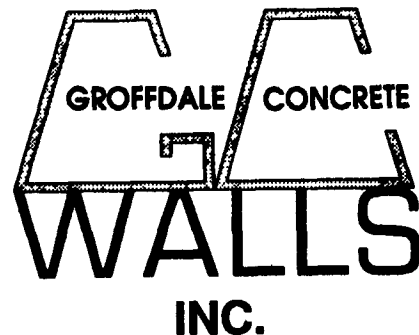
Beef Operation Featuring 8' Deep Manure Storage System With Waffle Slats

- Retaining Walls • Bunker Silos
- Manure Storage, Etc.

LET OUR EXPERIENCE WORK FOR YOU-ESTABLISHED SINCE 1979!  
WE ORIGINATED THE CONCRETE SYSTEM!

Sizes And Layouts  
To Your Specifications

We Work Hard For  
Customer Satisfaction!



430 Concrete Ave., Leola, PA  
717-656-2016

Authorized Dealer For  
KEYSTONE CONCRETE PRODUCTS

- H-Bunks
- J-Bunks
- Trench Silo Walls
- Hog & Cattle Slats