



**ACCORD REALTY INC.**  
737-6333

150 Rte. 222, East Lewis, Pa. 17024



**CUMBERLAND COUNTY**

156 ac m/l dairy farm, freestall barn, milking parlor, bank barn for heifers & dry cows, 2 1/2 story 4 BR house.

**Only \$265,000**

For Details and Free Brochure Ask For Ed Meyer  
(717) 737-6333 Office  
(717) 243-1030 Home

Clip and Save This AD!

**Excellent Farm**  
70A Tillable,  
Magnificent 10  
Room House (All  
Modern) Large  
Barn and Machine  
Shed, Stable,  
2 Garages  
Well Located Near  
Corning, NY  
**\$148,000**  
607/359-3822

**FARM -**  
160 Ac. 5 BR  
Home, Shop,  
Mach. Sheds.  
App. 110 Tillable  
Yates County  
Dundee Area  
**\$148,600**  
**Phone**  
607-243-5101

**FARMS OUR SPECIALTY!**

#1209 - Veal Calf Operation and a good one! Presently in operation. 56x204 barn with 388 veal crates, 26x48 machinery bldg. Ranch home 17 yrs. old, 8 rooms. All bldgs. in excellent condition. Nice setting. A good family business. \$199,500.

#1207 - **New Listing** - death in family forces sale of this good farm. 470 acres top quality land, new double 12 quick exit parlor, 300 freestalls with alley scrapers, manure lagoon, bunker silo, 4 houses. Located in top dairy area. Good milk markets. Good growing season. Price is firm. \$650,000.

Free Farm List Available

**POSSON REALTY**  
R.D. #3, Norwich, N.Y. 13815  
(607) 334-9727  
1 (800) 334-4399



**Horning Farm Agency**

**Juniata Co.** 56 Acres +/- located about 7 miles North of McAlisterville, Pa. Exit 322 at Thompsontown, take Rt. 333 to east Salem, Get Rt. 235 to McAlisterville, Take Rt. 35 North about 7 miles to Prudential Rittenhouse sign on right. Good productive Acreage. Soil type is primarily, "Mertz Cherty Silt Loam". Tract slopes gently.

Call Office For Details  
**215-286-5183**

**NICE FARM, GREAT LOCATION!** 72+/- ac, bank barn, pond, 2 sty home and more. Located near Wellsboro with great views. Peaceful setting! A REAL BUY AT \$124,900. E275.

**A DREAM HOME CAN BE YOURS!** This beautiful chalet with chalet type garage and a large pond sits on 43+/- acres, offers privacy and quality living. PRICED TO SELL AT JUST \$149,900. E301.

**SECLUDED, PEACEFUL AND PICTURESQUE** describes this well maintained farm with two newly steel sided barns, remodeled house, pond and 152+/- acres. PERFECT FOR THE FAMILY OR RETIREMENT! JUST \$197,000 E297

**ERA HOMESTEADY REALTY**

Main & S. Buffalo St.  
Eikland, PA 16920  
814-258-5691



Each office independently owned and operated

**WIMPLE ASSOCIATES**

**COOPERSTOWN STONE HOME FARM:** 250 acres of deep, rich soils with 150 tillable. Nice area, excellent school system. Historic stone home with 3' thick walls, 2 modern baths and 2 car garage. Barn has 72 stalls, pipeline, concrete yards, 16x40 silo, 36x80 machine shed. JUST LISTED! \$240,000.

**HIGH-PRODUCER:** 475 acre Mohawk Valley farm with 300+ acres tillable. Barn has 104 large ties, 8 unit Boumatic pipeline, Patz cleaner with manure stacker, 20x70 and 20x90 silos. Room for 200 head in barn. Good 5 bedroom, 2 bath home. Available with 10 tractors, machinery and cattle. \$350,000.

**MORT WIMPLE ASSOCIATES**  
SLOANSVILLE, N.Y.  
518-875-6355  
FAX: 875-6749  
FREE CATALOGUES



**4 COUNTIES REALTY, INC.**

PO Box 67  
3480 Oneida Street  
Chadwicks, NY 13319

OFFICE PHONE: 315-737-4489 TOLL FREE: 1-800-736-4089

#150C-BIG MAPLES FOR SYRUP operations on this 18 Acre piece of property with nice mobile home \$33,000.

**201A-350 ACRE DAIRY FARM** w/325 tillable - 74x176 ft. barn w/144 stalls & separate calf room, double-six herringbone parlor w/12 units - milk house w/office, utility room, bathroom & shower, 4 large silos, 2-family home - in good condition - offered at \$425,000.

#300-163 ACRE DAIRY OR HOBBY FARM would make a wonderful retirement property at an affordable price. A "must see" for anyone looking for privacy and a fantastic view of the Mohawk Valley. A very good remodeled country home, plenty of water, 2-story barn w/new Patz cleaner, dumping station & 500 gal. bulk tank, 40x78 ft. pole barn & 2 silos included in this deal for a very reasonable \$195,000. Also has over 6,000 ft. road frontage.

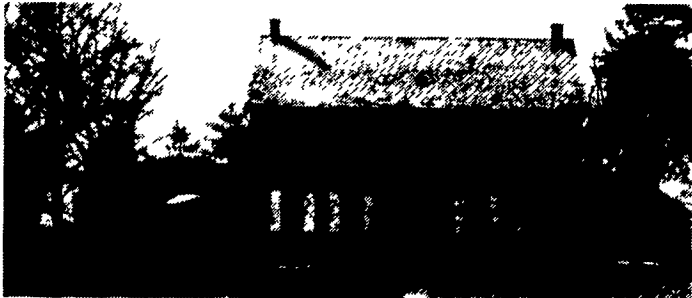
#601-LOCATED IN A BEAUTIFUL PART OF THE MOHAWK VALLEY 565 acre dairy farm w/350 tillable. Top quality buildings & soil productivity. Five silos, free stall barn for heifers, 160 cow tie stall barn & lovely remodeled ranch style home. Offered at \$575,000.

#701-168 ACRE DAIRY FARM w/100 A. tillable - 98x36 ft. barn w/60 stalls (3) 4 ft. wide - new milk house - 2 inch DeLaval pipeline, 600 gal. bulk tank & heat exchanger - 2 silos - 11 room 2/family house in good condition - one side remodeled - separate wells for house & barn, affordable at \$179,000.

GIVE GEORGE DEMEREE A CALL 4 ALL LAND AND FARM NEEDS.  
HOME PHONE: 315-823-0288

"Once In A Lifetime Opportunity!"

**NEW LISTING: 305 (m/l) Acre Estate - Lanc. Co.**



Prodigious stone farm house and stone bank barn. Approx. 290 Acres first class tillable soil. 300 sow farrow thru finish hog operation (7 bldgs.) Complete with feed mill and 60,000 bushel grain storage.

"Why not go first class?"

Principals Only On This One - Please Call For Details/Video

**LANCASTER COUNTY, PA**

- 30 Acres, 20 Stall Horse Barn, (2) 44x500 Broiler Houses, Large Stone Farm House & Smaller Rancher, Large Garage, Small Pond.
- 11 Acre Tract North of Rt. 340, Bank Barn and Small House, Lots of Road Frontage.
- 10 Acre Horse Farm, New Barn With 12 Stalls, Large Double Farm House
- Southern End 120 Acre Super Nice Dairy Farm, 5 Silos, Pond, 40x100 Equipment Shed, Etc., Etc.

**PERRY COUNTY, PA**

Picture Perfect Working Dairy Farm, 51 Comfort Stalls - 50x90 Equip. Shed, Fabulous House - Even Swimming Pool on 140 Acres. Cattle & Equipment also for sale. Immediate possession possible.

**MAHLON OBERHOLTZER AGENCY**

Your Central PA Farm Broker  
Smoketown, PA 17576 (Lanc. Co.)

717-392-1177

**NORTH CENTRAL PA**

115+/- acres, exc. hunting, mostly wooded, small stream, Cherry Flats area, \$69,000 #1196

53+/- Acres, small stream, nice views, mostly wooded, exc. hunting, has large older bank barn, \$53,000 #1196.

**Western Tioga County** - Panoramic views for miles from this beautiful cedar sided ranch home on 15+/- acres, large pole barn & horse barn included, ideal for horse lovers or gentlemen farmer. Close to State Forest Land. Addtl acreage available. \$189,000. #1151.

162+/- acres, Western Tioga County farm, large 60x100 pole barn + 45x50 bank barn, secluded location with excellent soils, asking \$235,000 #1200.



9 Cone Street  
Wellsboro, PA 16901  
717-724-3500

REAL ESTATE AND INSURANCE

**FINGER LAKES AREA FARMS FOR SALE**

Penn Yan North - 720 acres with three homes. Can be divided many ways. Some of the best soils in N.Y.S.

190 acres. Good four bedroom home with 40 tie stall barn. Level, stone-free soil.

245 A. 40 stanchion barn, other outbuildings, newly remodeled home.

480 A. 46 tie-stall barn, corn drying facilities, five bedroom home, excellent large fields.

1060 A. 900 tillable, 800 free-stall barn, five houses, 24 stall parlor, bunker silos, good soils.

A large assortment of crop and dairy farms in Finger Lakes Area. Give us a call.  
**William Botcher, Associate Broker**  
5634 Teller Road  
Newark, New York 14513  
315-331-5868

**HARRIS WILCOX, INC. REALTORS**



**200± ACRES** - approx. 150 tillable. Edom soils, agricultural zone. Frontage on 2 township roads, one dead end. Drilled well produces 30 gpm. Will survey. 5 miles from I-80 and 180 interchange, minutes into Watsonstown - \$295,000.

**100± ACRE DAIRY OPERATION** - Modern set up. Heifer barn, machine shed, grain bins, 20x50 silo and extensively renovated 2 story home. 2 wells, plenty of road frontage. Exchange area of Montour County. Price reduced to - \$320,000.

**The Fairman Agency**

212 Main Street  
Watsonstown, PA 17777  
(717) 538-2582

After Hours: David M. Litchard, R.E.S.  
(717) 437-2743

**EXCELLENT BEEF FARM...** 270 Acres... 80 tillable... 20 pasture... 170 timber... large bank barn with new steel loafing barn... buildings in very good condition... nice Cape Cod home... \$350,000.

**GENERAL FARM...** 130 Acres... 60 tillable... 20 pasture... 50 wooded... bank barn... pond... newer 4 bedroom split level home... nice accessible location... owner will consider subdividing... \$295,000.

**QUARRY ROAD, WILLIAMSON...** Need a dairy... this one has it all... just move your cows in and go to work... 216 acres... mostly tillable... 75% limestone soil... milking parlor... 111 free stalls... A-1 feeding system... very nice stone and frame house... one of the best on the market.

FOR MORE INFORMATION ON THESE PROPERTIES CALL OUR OFFICES AT:

17 N. Main Street  
Mercersburg, Pa. 17236  
(717) 328-3133

628 East Baltimore Street  
Greencastle, PA 17225  
717-597-8161

1047 Lincoln Way West  
Chambersburg, PA 17201  
(717) 264-4300

1200 Dual Highway  
Hagerstown, MD 21740  
(301) 797-1717

