



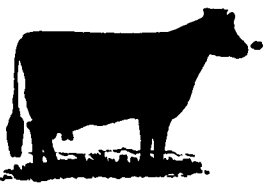
Hog Markets

New Holland Feeder Pigs

New Holland, PA
Wed., June 10, 1992
Report Supplied by Auction
TODAY: 803 HEAD
LAST WEDNESDAY: 1358 HEAD
LAST YEAR: 1358 HEAD
TREND: COMPARED TO LAST WEDNESDAY, FEEDER PIGS 10.00-12.00 HIGHER, EXTREMES 20.00 HIGHER ON 40 LB. WEIGHTS. ALL PIGS WEIGHED ON ARRIVAL AND SOLD BY THE HUNDRED WEIGHT.
US GRADES 1&2: 78 HEAD 32-37 LBS. 99.00-108.00; 67 HEAD 33-39 LBS. 85.00-94.00; 196 HEAD 40-49 LBS. 76.00-86.00; 14 HEAD 43 LBS. 102.00; 88 HEAD 50-59 LBS. 70.00-80.00; 64 HEAD 60-66 LBS. 67.00-72.00; 12 HEAD 71-79 LBS. 63.00-66.00.
US#2&3: 14 HEAD 39 LBS. 80.00; 28 HEAD 45 LBS. 74.00; 24 HEAD 50-57 LBS. 67.00-68.00; 10 HEAD 65 LBS. 64.00.
SLAUGHTER: 37 HEAD 20-22 LBS. 112.00-125.00; 36 HEAD 26-27 LBS. 90.00-100.00.

Indiana Livestock

Homer City, PA
June 11, 1992
Report supplied by Auction
CATTLE 129. STEERS: HIGH CHOICE AND PRIME 74.50, CHOICE 71.00-73.75, SELECT 62.00-71.00, SELECT & CHOICE HOLSTEINS 60.00-65.00.
HEIFERS: CHOICE 74.00, SELECT 71.00.
COWS: BREAKING UTILITY & COMMERCIAL 55.00, CUTTER & BONDING UTILITY 48.50-52.50, CANNER & LOW CUTTER 45.00-46.00, SHELLS 48.00.
BULLOCKS: SELECT 65.00.
BULLS: YIELD GRADE NO. 1 60.00-62.50.
CALVES 123: FEEDERS 400 LBS. 75.00-80.00, 700 LBS. 68.00, CHOICE 104.00, GOOD 90.00-92.00, STANDARD & GOOD 70 LBS. 95¢ 80 LBS. 85.00, HOLSTEIN BULLS #1 98 LBS. 125.00-132.00, #2 105 LBS. 110.00-120.00, HOLSTEIN HEIFERS 95 LBS. 160.00-180.00.
HOGS 205. B&G US NO. 1-2 240 LBS. 43.75, US NO. 1-3 260 LBS. 42.00-42.50, SOWS US NO 1-3 400 LBS. 37.00, BOARS 28.25.
FEEDER PIGS 10: 50/85 LBS. 28.00-30.00 PER HEAD.
SHEEP 24: H. CHOICE & PRIME SL. LAMBS 25 LBS. 20.00 PER HEAD, SHEEP 22.50.
GOATS 16. LARGE 70.00, MEDIUM 30.00, SMALL 15.00.



New Holland Hog Auction

Lancaster, Pa.
Monday, June 8, 1992
Receipts:
Today 976
Last Monday 792
Last Year 758
TREND: Compared to last Monday barrows and gilts firm to 50 higher.
BARROWS AND GILTS: US 1-2 210-245 lb 44.50-45.50.
US 1 215-235 lb 46.00-46.25, Six head 228 lb 49.00.
US 1-3 215-255 lb 43.00-44.00, Few 205-210 lb 42.00-42.50.
US 2-3 260-280 lb 41.00-41.50.

State Graded Feeder Pig Sale

at Westminster Livestock Auction
Friday, June 5, 1992
RESULTS ON 1906 PIGS.
1117 PIGS, 2 WEEKS AGO 550. PRICES \$10-20 PER HUNDRED LOWER COMPARED TO ACTIVE SALE 3 WEEKS AGO, ALL PIGS WEIGHED ON ARRIVAL AND SOLD BY THE POUND.
US NO. 1: 40 HD: 33-40 LBS. 78.99-91.00, 196 HD: 43-48 LBS. 65.00-75.00, 158 HD: 51-59 LBS. 59.00-69.00, 110 HD: 60-68 LBS. 58.00-69.00, 96 HD: 70-73 LBS. 58.00-61.00, 48 HD: 78-83 LBS. 53.00-59.00, 65 HD: 89-94 LBS. 52.00-53.00.
US NO. 1&2: 24 HD: 33 LBS. 70.00, 117 HD: 39-49 LBS. 60.00-71.00, 117 HD: 49-56 LBS. 54.00-57.00, 45 HD: 60-67 LBS. 50.00-56.00.
US NO. 2 16 HD: 27 LBS. 59.00, 73 HD: 27-39 LBS. 45.00-52.00.
NEXT STATE GRADED FEEDER PIG SALE FRIDAY, JUNE 19, 1:30 P.M.; GRADING 7:30-11 A.M.

Central U.S. Carlot

Pork Report
June 10, 1992
Report supplied by USDA
CENTRAL U.S. CARLOT PORK REPORT FOB OMAHA BASIS INCLUDES MAJOR PRODUCTION AREAS IN MIDWEST AS OF 3 P.M. COMPARED TUESDAY'S 3:00 P.M. CLOSE: FRESH PORK LOINS STEADY WITH WEAK UNDERTONE; BUTTS MOSTLY STEADY TO 1.00 HIGHER; SKND. HAMS 17-20 LBS. 1.00-2.00 LOWER, 20-26 LBS. STEADY TO 1.00 LOWER; SDLS. BELLIES GENERALLY 1.00 LOWER. TRADING SLOW, WITH LIGHT TO MODERATE DEMAND AND OFFERINGS.
53.0 LOADS PORK CUTS
27.5 LOADS TRIM/PROCESS
PORK CUTS
LOINS, REG., FRESH
14-18 LBS., * 6.0 LOADS, RANGE 107.00-114.00, WGHTD. AVG. 110.50.
½" TRIM 14-18 LBS., 6.0 LOADS, RANGE 127.00-134.00, WGHTD. AVG. 130.42.
18-22 LBS., * RANGE 111.00, WGHTD. AVG. 111.00 D.
½" TRIM 18-22 LBS., RANGE 128.00, WGHTD. AVG. 128.00 D.



Hay & Grain Markets

Good's Hay

Leola, Pa.
Wed., June 10, 1992
Report Supplied by Auction
TOTAL LOADS: 43.
MIXED HAY: 75.00-160.00.
ALFALFA: 59.00-82.00.
STRAW: 74.00-125.00.
TIMOTHY: 132.00-210.00.
CORN: 95.00-109.00.
CLOVER: 74.00.
GRASS: 106.00.

Greencastle Hay Market

Hay & Straw
June 4 and 8, 1992
6 LOADS.
ALFALFA (GOOD) NEW HAY 52.00-60.00.
MIXED HAY: NEW 35.00-55.00.
WHEAT STRAW: 1 LOAD AT 89.00.

COMBOS 22 LBS. AND UP, RANGE 69.00, WGHTD. AVG. 69.00 A.
LOIN, BLS CTRCT 5-7 LBS.
RANGE 252.00, WGHTD. AVG. 252.00 A.
BNLS SIRLOIN .75-1.00 LB.
TENDERLOIN 1.25 LBS. AND DOWN RANGE 378.00, WGHTD. AVE. 378.00 D.
0.5 LOADS, RANGE 174.00, WGHTD. AVG. 174.00.
PICNIC, FRESH (COMBOS) FOR SMOKER TRIM, RS RANGE 50.00, WGHTD. AVG. 50.00 A.

COMMODITY 4-8 LBS. RANGE 37.00, WGHTD. AVG. 37.00 A.
BOSTON BUTT * 4-8 LBS. *, 10.5 LOADS, RANGE 69.00-80.00, WGHTD. AVG. 76.86.
½" TRIM 4-8 LBS., 10.5 LOADS, RANGE 91.00-101.00, WGHTD. AVG. 97.14.

COMBOS 8/UP LBS., RANGE 65.00, WGHTD. AVG. 65.00 C.
SPARERIBS, FRESH 1.5-3.5 LBS., 2.5 LOADS, RANGE 118.00-122.00, WGHTD. AVG. 120.44.
3.5-5.5 LBS., RANGE 101.00, WGHTD. AVG. 101.00 A.
LOIN BACKRIB (COMBOS) FRSH/FRZN 1.75 LBS. AND DOWN, 0.5 LOADS, RANGE 212.00, WGHTD. AVG. 212.00.
HAM, SKINNED, SELECTED FRESH 17-20 LBS., 3.0 LOADS, RANGE 63.00-66.00, WGHTD. AVG. 64.00.
FRESH 20-26 LBS., 9.0 LOADS, RANGE 66.00-68.00, WGHTD. AVG. 67.33.
HAM, SKINNED, COMMODITY FRESH 17-20 LBS., RANGE 62.00, WGHTD. AVG. 62.00 A.
FRESH 20-26 LBS., 6.0 LOADS, RANGE 63.00, WGHTD. AVG. 63.00.
32 LBS. AND UP, RANGE 59.00-60.00, WGHTD. AVG. 59.33 A.

Leinbach's Hay

Shippensburg, PA
June 6 and June 9
Report Supplied by Auction
33 LOADS.
ALFALFA: GOOD 85.00-140.00, FAIR 50.00-80.00.
TIMOTHY: 52.00-118.00.
MIXED HAY: 67.00-94.00.
BROME GRASS: 64.00-129.00.
ORCHARD GRASS: 62.00-110.00.
STRAW: 65.00-125.00.
EAR CORN: 99.00.
MULCH HAY: 30.00-45.00.
OATS: 2.60 BU.

Diffenbach Auction Center

New Holland, Pa.
Monday, June 8, 1992
Report Supplied by Auction
TOTAL LOADS: 101.
ALFALFA: 57.00-185.00.
MIXED HAY: 50.00-160.00.
TIMOTHY: 85.00-195.00.
ORCHARD GRASS: 80.00-145.00.
STRAW: 60.00-130.00.
EAR CORN: 92.00-103.00.
OATS: 2.20-2.30 BU.
This sale was formerly held at the New Holland Sales Stables. It is now held at Diffenbach's New Holland Auction Center Ltd., 100 W. Jackson St., New Holland, across from the prior sale location. Auction time is 10:00 a.m. Monday.

North Jersey Market

Hackettstown, N.J.
Tuesday, June 9, 1992
Hay—Straw & Grain Report
ALFALFA HAY: 1 LOAD, 2.40 BALE.
MIXED HAY: 1 LOAD, 2.40 BALE.
GRASS HAY: 4 LOADS, 1.50-2.50 BALE.
WHEAT STRAW: 1 LOAD, 1.75 BALE.
OATS: 7.00 BAG.
CEDAR POSTS: 2.25 EACH.
TOTAL: 9 LOTS.

Green Dragon Hay

Ephrata, Pa.
Friday, June 5, 1992
Report Supplied by Auction
TOTAL LOADS: 36.
MIXED HAY: 100.00-157.00.
ALFALFA: 77.00-127.00.
TIMOTHY: 100.00 AND 245.00.
GRASS HAY: 77.00 AND 95.00.
STRAW: 55.00-120.00.
EAR CORN: 105.00-113.00.

Belleville Hay

Bellefonte, PA
Wednesday, June 10
Report Supplied by Auction
TOTAL LOADS: 17 LOADS.
MIXED HAY: 40.00-97.50.
STRAW: 90.00-100.00.
EAR CORN: 3 LOADS, 90.00-95.00.

Kirkwood Hay Auction

Kirkwood, Pa.
Tuesday, June 9, 1992
Report Supplied by Auction
32 LOADS OF HAY.
MIXED HAY: FIRST CUTTING, OLD 77.00-78.00, NEW 47.00-67.00.
TIMOTHY: 79.00-130.00.
ALFALFA: 3RD CUTTING 119.00-151.00.
TIMOTHY CLOVER MIX: 142.00.
GRASS: NEW 132.00; OLD 71.00-118.00.
WHEAT STRAW: 76.00-93.00.
BARLEY STRAW: 90.00-95.00.
RYE STRAW: 49.00-85.00.
SALE TIME 11 A.M.

Westminster Hay

Westminster, Md.
Tuesday, June 9, 1992
Report Supplied by Auction
TOTAL LOADS: 70.
ALFALFA: .85-3.40 BALE.
ALFALFA MIX: 1.70-2.20 BALE.
TIMOTHY: 66.00, 1.50-3.20 BALE.
TIMOTHY MIX: 1.20-1.60 BALE.
ORCHARD GRASS: .90-1.70 BALE.
ALFALFA MIXED ROUND BALES: 14.00 EACH.
CLOVER HAY: 1.60 BALE.
STRAW: .80-3.00 BALE.

Keister's Hay

Middleburg, PA
June 9, 1992
Report supplied by auction
12 LOADS HAY.
ALFALFA: 125.00.
MIXED HAY: 40.00-175.00.
STRAW: 1 LOAD AT 90.00.
EAR CORN: 3 LOADS, 90.00-100.00.
BARLEY: 1 LOAD AT 2.00 BU.
OATS: 2 LOADS, 1.90-2.05 BU.

Dewart Hay

Dewart, PA.
Monday, June 8, 1992
Report Supplied by Auction
16 LOADS HAY, 28.00-74.00.
STRAW: 3 LOADS, 69.00-70.00.
CORN: 91.00-100.00.
OATS: 4 LOADS, 2.00-2.25 BU.

Vintage Hay

Paradise, PA
Thurs., June 11, 1992
Report Supplied by Auction
8 LOADS.
STRAW: 70.00-88.00.
MIXED HAY: 42.00-118.00.
ORCHARD GRASS: 96.00-125.00.



In this issue

Four Sections

COLUMNS

Now is the Time.....	A10
On Being a Farm Wife.....	B 4
Have You Heard.....	B 3
Ida's Notebook.....	B16
Microwave Magic.....	B 5
Poultry Pointers.....	C 3
Beef Briefs.....	C 2

DEPARTMENTS

Editorial.....	A10
Farm Calendar.....	A10
Farm Forum.....	A10
Classified Ads.....	C11,D4
Business News.....	C 6
Mailbox Markets.....	B17
Sale Reports.....	B21
Public Auction Register.....	B21

FEATURES

Chester Dairy Princess.....	B12
Benefit Auction.....	C 5
30-Year Success.....	C10
Showcase Dairy.....	D 2
Strawberry Auction.....	A18
Will Acres Farm.....	A32
Mercer Farm.....	A24
Pequea Field Day.....	A28
Payne's Dairy.....	A22

HOME AND YOUTH

Homestead Notes.....	B 2
Home On The Range.....	B 6
Cook's Question Corner.....	B 8
Kid's Korner.....	B10

DAIRY

DHIA Focus.....	A29
-----------------	-----



KIRKWOOD HAY AUCTION

Hay, Straw and Grain Auction
EVERY TUESDAY
11:00
Located Rt. 472 5 miles south of Quarryville or 6 miles north of Oxford corner of Rt. 472 and Noble Road.

Lloyd H. Kreider,
Auctioneer
AU-000513L
No out of state checks

Walter M. Dunlap and Sons offers all cattle feeders two marketing days - Give us a call for advice and marketing conditions.

MONDAYS OR WEDNESDAYS

Consign With Us - For The Marketing Edge

Consign Your Beef Cows
Mondays and Wednesdays

No Waiting to Unload - Good Weight Conditions

Next Feeder Cattle Sale
Friday, June 19 - 11:00 A.M.

Walter M. Dunlap and Sons

Lancaster Stockyards
Tel. (717) 397-5136

An Old Line Commission Firm Keeping
Abreast With The Times