

Four States Livestock

Hagerstown, Md.
June 3, 1992

Report supplied by Auction

SLAUGHTER COWS: STEADY PRICES. UTILITY 48.00-52.00; HIGH DRESSING TO 53.00; CANNERS 44.00-48.00; SHELLY 44.00 DOWN. BULLS: YG#2 1500-1800 LBS. 57.00-60.00.

FED STEERS: FEW HIGH CHOICE 1300-1450 LBS. 73.00-74.00; CHOICE 1100-1400 LBS. 70.00-73.00; PRIME HOLSTEIN 1550 LBS. 70.75; CHOICE 1300-1500 LBS. 63.00-65.00.

FED HEIFERS: HIGH CHOICE 1100-1200 LBS. 70.00-71.50; 1 975 LB. AT 69.50.

VEAL CALVES: LOW CHOICE 200-300 LBS. 89.00-93.00; CULLS 80-110 LBS. 75.00-85.00; WEAK/ROUGH 65.00 DOWN.

FARM CALVES: HOLSTEIN BULLS #1 95-125 LBS. 110.00-125.00; #2 80-110 LBS. 90.00-110.00; HOLSTEIN HEIFERS #1 95-120 LBS. TO 162.50; 80-95 LBS. 120.00-140.00; BEEF X BULLS AND HEIFERS 115.00-147.00.

BUTCHER HOGS: FEW OFFERED. US#2&3 255 LBS. 42.75; 190-210 LBS. 38.00-41.00.

SOWS: 300-700 LBS. 33.00-36.50.

BOARS: 400-700 LBS. 29.00-30.25.

STOCK CATTLE: STEERS 300-500 LBS. 80.00-87.00; 700-900 LBS. 64.00-69.50; 900-1000 LBS. 63.00-70.00.

HEIFERS: 300-500 LBS. 68.00-70.00; 500-700 LBS. 64.00-70.00.

BULLS: 200-300 LBS. 100.00-117.00; 300-500 LBS. 75.00-85.00; 500-700 LBS. 58.00-69.00.

DAIRY REPLACEMENTS: LARGE FRESH AND SPRINGING 900.00-1150.00; MEDIUM 750.00-900.00; HOLSTEIN HEIFERS BY THE POUND, FEW 500 LBS. TO 84.00.

LAMBS: HIGH CHOICE AND PRIME 80-105 LBS. 75.00-80.00; GOOD 40-70 LBS. 67.00-76.00.

SHEEP: 20.00-30.00; HEAVY WEIGHTS 16.00-23.00.

GOATS: LARGE 58.00-80.00; MEDIUM 40.00-55.00; SMALL TO 28.00.

PIGS AND SHOATS: 141 HEAD. BY THE HEAD, 20-35 LBS. 15.00-22.00; 35-50 LBS. 25.00-30.00; 50-70 LBS.

30.00-36.00; BY THE POUND, 130-150 LBS. 34.00-41.00; 180-200 LBS. 39.00-41.00.

SELLING NEXT WED., JUNE 10: 6 PUREBRED ANGUS HEIFERS 800 LBS. AND 9 PUREBRED ANGUS HEIFERS 500 LBS.

Keister's Middleburg Auction

Middleburg, PA
June 2, 1992

CATTLE 329.. PDA ..Compared with last weeks market: Choice 1000/1600 lbs. steers 70.50-75.00, few to 76.75, Select 67.25-70.00, few high dressing 71.25-74.00, Choice Holsteins 65.00-66.75, one at 69.00, Select 63.00-65.00, few Standard 58.00-61.75, few Choice heifers 69.75-71.00, few Select 60.50-68.00, few Choice Holstein heifers 62.00-66.75. Breaking Utility & Commercial sl. cows 47.25-51.25, Cutter & Boning Utility 48.75-52.50, few head to 55.00, Canner & Low Cutter 44.50-48.50. Shells down to 43.00. Few Choice bullocks 65.00-72.00. Yield Grade No. 1, sl. bulls 980/1930 lbs. 58.75-64.00, few No. 2 1035/1875 lbs. 51.00-57.00. Feeder Cattle: Medium Frame 1 450/850 lbs. steers and bulls 64.00-80.00, few Large Frame 1 400/450 lbs. heifers at 78.00.

CALVES 160...Standard and Good 75/100 sl. calves 130.00-180.00. Farm Calves: Holstein bulls No. 1, 90/130 lbs. 110.00-125.00, few to 132.50, No. 2, 80/120 lbs. 85.00-115.00, Holsteins heifers No. 1, 70/120 lbs. 130.00-180.00. Few Beef cross 90/160 lbs. bulls and heifers 130.00-160.00.

HOGS 442...(6/01/92)..No. 1 225/250 lbs. barrows and gilts 44.50-46.00. No. 1-2, 220/250 lbs. 43.50-45.00, 1-3 200/250 lbs. 42.00-43.50, 2-3 190/300 lbs. 39.00-41.75. Sows: 1-3 300/725 lbs. 35.00-42.00, 2-3 300/600 lbs. 30.00-35.00. Boars 250/650 lbs. 29.00-31.00.

FEEDER PIGS 432...US 1-3 25/45 lbs. feeder pigs 21.00-33.00, 50/70 lbs. 34.00-41.00. --- all per head.

SHEEP 52...Choice 55/105 lbs. Spring Slaughter Lamb 66.00-88.00, few 25/35 lbs. 121.00-135.00, Good 30/65 lbs. 49.00-64.00. Slaughter Ewes 23.00-42.00. - all cwt.

GOATS 20...Large Goats 41.00-99.00, Small Kids 20.00-25.00. --- all per head.

Shenandoah Valley Livestock

Harrisonburg, Va.
May 30, 1992

Report supplied by auction

STEERS: M&L-1 300-500 LBS. 88.00-97.50; 500-700 LBS. 78.00-85.75; 700-1000 LBS. 66.00-77.00; HOLSTEINS 300-1000 62.00-80.00.

S-L&M&L-2: 300-500 LBS. 82.00-91.50; 500-700 LBS. 73.00-79.00. FEEDER BULLS: 300-500 LBS. 85.00-94.50; 500-700 LBS. 71.00-82.50; 700-1000 LBS. 65.00-72.50.

S-L&M&L-2: 300-500 LBS. 81.50-90.00.

HEIFERS: 300-500 LBS. 78.00-83.00; 500-700 LBS. 75.00-79.75.

S-L&M&L-2: 300-500 LBS. 76.00-79.50; 500-700 LBS. 70.00-75.00.

STOCK COWS: BEEF PAIRS 650.00-820.00; BABY CALVES BY THE HEAD 80.00-137.50.

SLAUGHTER COWS: UTILITY AND COMMERCIAL 2-4 44.25-48.00; CANNERS AND CUTTERS 1-3 40.50-45.50.

SLAUGHTER BULLS: 1 & 2 58.00-62.75.

LAMBS: BLUE O CHOICE AND PRIME 75.90, FEEDER LAMBS CHOICE 76.00-80.00; SLAUGHTER EWES 10.00-24.50.

HOGS: US 1-3 200-240 LBS. 38.50; SOWS 1-3 31.00-34.50; BOARS 25.00-26.00.

SLAUGHTER CALVES: GOOD AND CHOICE 250-500 LBS. 78.00-92.00.

Morrison Cove Livestock

Martinsburg, Pa.
June 1, 1992

Report supplied by auction

CATTLE 249. STEERS CHOICE 70.75-72.25; GOOD 69.50-70.50.

HEIFERS: CHOICE 70.00-74.10; GOOD 65.50-69.00.

COWS: UTILITY & COMMERCIAL 45.00-50.00; CANNER & LOW CUTTER 38.00-49.00.

BULLOCKS: GOOD & CHOICE 60.00-63.50.

BULLS: YIELD GRADE NO. 1 57.00-62.00.

FEEDER CATTLE: STEERS 75.00-97.00; BULLS 62.00-87.00; HEIFERS 61.00-77.00.

CALVES 251. PRIME NO MARKET TEST; CHOICE 93.00-99.50; GOOD 87.00-90.50; STANDARD 56.00-82.00; HOLSTEIN BULLS 90-130 LBS. 105.00-126.00; HOLSTEIN HEIFERS 90-130 LBS. 135.00-163.00.

HOGS: 128. US NO. 1-2 44.00-44.75; US NO. 1-3 42.00-42.75.

SOWS: US NO. 1-3 30.00-38.00. BOARS 26.00-31.00.

FEEDER PIGS: 32. US#1-3 20-50 LBS. 20.00-29.00.

SHEEP 52. CHOICE 70.00-74.00; GOOD 65.00-69.00; SLAUGHTER EWES 17.00-29.00.

GOATS: 17.00-53.00.

10 LOADS OF HAY. NEW MIXED 88.00; TIMOTHY 80.00-92.00; ALFALFA 117.00-137.50; 2 LOADS OF STRAW 81.00-114.00; 1 LOAD EAR CORN 101.00.

New Holland Horses

New Holland Sales Stables
New Holland, PA

Monday, June 1, 1992

REPORT SUPPLIED BY AUCTION

373 HEAD. MARKET STRONGER. RIDING HORSES 510.00-935.00. DRIVING HORSES 725.00-1150.00. BETTER RIDING HORSES 1025.00-1400.00.

REGISTERED HORSES 760.00-1000.00.

HORSE COLTS 250.00-445.00. MARE PONIES 85.00-265.00. PONY COLTS 45.00-100.00. GELDINGS 85.00-265.00.

LARGER PONIES 350.00-410.00. KILLERS: LIGHTWEIGHT 510.00-750.00.

HEAVYWEIGHT KILLERS 850.00-960.00, 1 AT 1300.00.



Notice Of Time Change (Hay Sale)
Starting Jan. 1, 1992
(New Year's Day)

Hay And Straw Sales Will Start At 10 A.M. Every Wed.

GOOD'S AUCTION
111 North Maple Ave.
Leola, PA 17540
717-656-8911
717-656-9554

HAY, STRAW & GRAIN SALE
Every Thursday at 1 p.m.
Auction will continue all year long
Vintage Sales Stables, Inc.

(Rt. 30, 10 miles east of Lancaster in Paradise, PA)

For info. L. Robert Frame, Sr. president
717-442-4181 business
215-458-8518 home Glenn S. Frame Mgr.

HORSE SALE
June 19, 1992
7:00 P.M.

NEW HOLLAND SALES STABLES INC. THE ACTION AUCTION

LIVESTOCK IS OUR ONLY BUSINESS

1 Load NY State Cows
Fresh And Springers.

1 Load Fresh Cows

1 Load Including Several
P.B. Cows With
Good Records

MONDAY

SLAUGHTER HOGS



EARLY BIRD HOG SALE
8:00 A.M.

Sell Your Hogs At New Holland Sales Stables, Inc.
See them weighed, sold and pickup your check.

10:00 A.M.



**HORSES
MULES**

1:30 P.M.

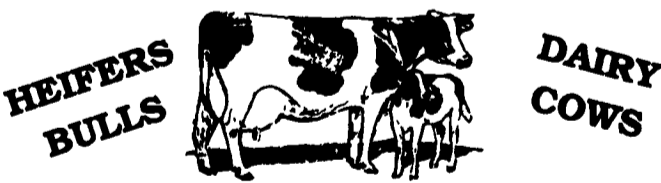


**BEEF SALE
SHEEP
GOATS
CALVES**

WEDNESDAY

HEIFER SALE

11:00 A.M.
COW SALE 12:00 NOON



We have the usual run of 50 to 100 Heifers, all ages.
Loads of fresh cows and springers from our regular shippers.
Also some local fresh cows and springers.

**1:30 P.M.
FEEDER PIG SALE**



Pigs are accepted after 6:30 A.M. State graded from 8 to 12.
Dairy Barn and Feeder Pig Barn are cleaned and disinfected weekly for your protection.

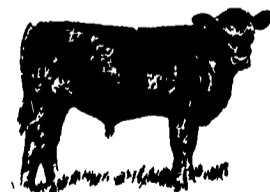
THURSDAY

Beef Auction
10:00 A.M.

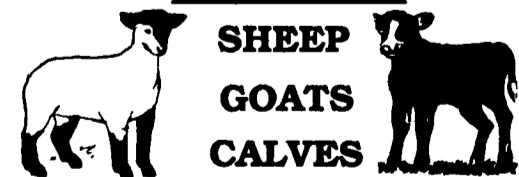


**BULLS
STEERS
BEEF COWS**

**1:00 P.M.
STOCKERS
&
FEEDERS**



12:00 NOON



**SHEEP
GOATS
CALVES**

NEW HOLLAND SALES STABLES, INC.

12 Miles East of Lancaster Off Route 23, New Holland, Penna.

MANAGERS

Norman & David Kolb - 717-397-5538

Field Representatives

Luke Eberly - 215-267-6608 738-1865
Homer Eberly - 215-267-3047
Ron Ranck - 717-656-9849

Sale Barn Office Manager
Roger Floyd - 717-354-4341
FAX # 717-355-0706

Order Buyer
Paul Good - 215-445-6662