

Aberdeen Sales Company, Inc.

Complete Auction & Appraisal Service
Churchville, Md.

Wednesday, May 27, 1992

SLAUGHTER STEERS: MARKET 1.50 LOWER. CHOICE 2-4 1100-1400 LBS. 73.50-75.50; SELECT & LOW CHOICE 1000-1500 LBS. 66.00-72.00; HOL. STEERS HI CHOICE & PRIME 1250-1400 LBS. 66.00-69.00; CHOICE 1200-1500 LBS. 65.00-67.50; SELECT, ALL WEIGHTS 56.00-63.00.

SLAUGHTER HEIFERS: MARKET 1.00 LOWER. CHOICE & PRIME 950-1300 LBS. 71.50-74.00; SELECT ALL WEIGHTS 900-1400 LBS. 63.00-69.00.

COWS: MARKET STEADY. BRK. UT. & COMM. 2-4 BULK 47.00-51.50; HI DRESSING 52.00-57.00; CUTTER & BON. UT. 46.00-49.00; HI DRESSING 50.00-53.00; CANNER & CUTTERS 43.00-46.50; LOW DRESSING 41.00-DOWN.

BULLS: MARKET 2.00 LOWER. ALL WEIGHTS 1100-1900 LBS. 57.00-68.00. VEAL CALVES: MARKET STEADY. CHOICE & PRIME 200-400 LBS. 83.00-92.00; HI GOOD & LOW CHOICE ALL WEIGHTS 75.00-90.00.

FARM CALVES: MARKET 12.00 LOWER. HOL. BULLS 100-125 LBS. 120.00-136.00; HOL. BULLS 85-95 LBS. 100.00-130.00; HOL. HEIFER CALVES 100-120 LBS. 160.00-185.00; SMALL FRAME 70-105 LBS. 75.00-130.00; SLAUGHTER CALVES ALL WEIGHTS 69.00-76.00.

FEEDER CATTLE: MARKET STEADY. BULLS & STEERS 400-900 LBS. 64.00-82.00; HEIFERS 300-700 LBS. 58.00-78.00.

LAMBS: MARKET 3.00 LOWER. CHOICE & PRIME 90-110 LBS. 75.00-78.00; LIGHTER LAMBS 68.00-80.00; EWES - HEAVY 23.00-29.00; EWES - LIGHT 32.00-35.00. GOATS: MARKET STEADY. SMALL 15.00-25.00; MEDIUM 30.00-45.00; LARGE 50.00-90.00.

HOGS: MARKET 1.50 LOWER. 210-250 LBS. 39.00-42.00; 255-300 LBS. 35.00-38.00; SOWS - HEAVY 34.00-38.00; SOWS - LIGHT 28.00-34.00; BOARS ALL WEIGHTS 27.00-32.00.

Frederick Livestock Auction

Frederick, Md.
May 25, 1992

Report Supplied by Auction

SLAUGHTER COWS: SMALLER RUN. UTILITY 48.50-52.00; HIGH DRESSING 53.00-54.00; CANNERS 43.00-48.00; SHELLY 43.00 DOWN.

BULLS: YG#1 1400-1800 LBS. 60.00-62.75; YG#2 53.00-58.00.

FED STEERS: LOW CHOICE 1290 LBS. TO 71.50; LOW CHOICE HOLSTEINS 1210 LBS. 62.50.

FED HEIFERS: FEW OFFERED. VEAL CALVES: CHOICE 180-325 LBS. 94.00-95.00; GOOD 80.00-86.00; CULLS 85-110 LBS. 79.00-87.00; 50-80 LBS. 65.00-80.00; WEAK/ROUGH 60.00 DOWN.

FARM CALVES: HOLSTEIN BULLS #1 95-125 LBS. 115.00-132.00; 80-90 LBS. 95.00-115.00; HOLSTEIN HEIFERS, STRONG DEMAND. #1 95-125 LBS. 150.00-172.00; 75-90 LBS. 110.00-150.00; BEEF X BULLS TO 130.00; HEIFERS FEW TO 90.00.

BUTCHER HOGS: 30 HEAD, 1.00 LOWER. US#1&2 230-260 LBS 44.85; 215-260 LBS. #1&3 43.00-44.00; #2&3 40.00-42.00.

SOWS: 350-450 LBS. 35.00-36.00; THIN 32.00-34.00.

BOARS: NONE. STOCK CATTLE: STEERS, MAINLY HOLSTEINS OFFERED. 500-750 LBS. 57.00-62.00; 1 BEEF TYPE 725 LBS. AT 71.00; FEW 1000 LBS. TO 73.00.

HEIFERS: 1 HOLSTEIN 300 LBS. AT 84.00; 1 BEEF STOCK COW 1000 LBS. AT 61.50.

BULLS: HOLSTEINS 300-400 LBS. 75.00-83.00; FEW 600 LBS. TO 53.50. DAIRY REPLACEMENTS: SMALL SPRINGERS 500.00-650.00.

LAMBS: CHOICE 55-80 LBS. TO 72.00; YEARLINGS 80-95 LBS. 39.00-42.00.

GOATS: LARGE NANNIES TO 61.00; MEDIUM 25.00-35.00; SMALL 12.00-25.00.

PIGS AND SHOATS: 45 HEAD. BY THE HEAD, 20-35 LBS. 19.00-29.00; 1 STOCK BOAR 280 LBS. AT 49.00.

STRONG DEMAND FOR HOLSTEIN HEIFER CALVES TO GO SOUTH! ANOTHER TENNESSEE BUYER WILL BE IN FREDERICK ON JUNE 1.

Four States Livestock

Hagerstown, Md.
May 27, 1992

Report supplied by Auction

SLAUGHTER COWS: 72 HEAD, 1.00 LOWER UTILITY 48.00-52.00; HIGH DRESSING 52.00-54.00; CANNERS 43.00-47.00; SHELLY 43.00 DOWN.

BULLS: YG#1 1600-2000 LBS. 64.75; YG#2 1100-1600 LBS. 53.00-58.00.

FED STEERS: GOOD RUN, HIGHER PRICES. HIGH CHOICE AND PRIME 1200-1450 LBS. 76.00-78.00; CHOICE 1100-1400 LBS. 72.00-75.50; LOW CHOICE 68.00-72.00; SELECT HOLSTEINS TO 62.00.

FED HEIFERS: 1.00 HIGHER. HIGH CHOICE AND PRIME 1100-1300 LBS. 73.00-74.75; CHOICE 68.00-72.00; SELECT 63.00-67.00.

VEAL CALVES: CHOICE 180-300 LBS. 89.00-99.00; GOOD 80.00-90.00; CULLS 70-100 LBS. 75.00-85.00; WEAK/ROUGH 60.00 DOWN.

FARM CALVES: HOLSTEIN BULLS, WEAK DEMAND, 10.00 LOWER. #1 95-120 LBS. 110.00-126.00; #2 80-100 LBS. 90.00-110.00; HOLSTEIN HEIFERS 95-120 LBS. 140.00-160.00; BEEF X BULLS AND HEIFERS 80-120 LBS. 110.00-147.00.

BUTCHER HOGS: FEW OFFERED. US#1&3 215-260 LBS. 43.00-44.00; #2&3 40.00-42.50; FEW 190-200 LBS. 39.00-41.50; 275-300 LBS. 37.00-39.00.

SOWS: 300-500 LBS. 34.00-37.50. BOARS: 400 LBS. TO 29.00.

STOCK CATTLE: 178 HEAD. STEERS 200-400 LBS. 92.00-110.00; 400-600 LBS. 80.00-90.00; 600-800 LBS. 72.00-85.00; HOLSTEIN 60.00-66.00;

800-1000 LBS. 64.00-72.00; HOLSTEINS 60.00-64.00.

HEIFERS: 300-500 LBS. 72.00-84.00; FEW HOLSTEINS TO 69.00; 500-700 LBS. 67.00-76.00; FEW HOLSTEINS TO 78.00.

BULLS: 200-400 LBS. 84.00-96.00; 400-600 LBS. FEW TO 81.00; 800-1000 LBS. 61.00-66.00.

DAIRY REPLACEMENTS: LARGE SPRINGERS AND FRESH 950.00-1175.00; MEDIUM 700.00-900.00; SMALL 400.00-600.00.

LAMBS: 45 HEAD. HIGH CHOICE TO PRIME 100-115 LBS. 75.50; CHOICE 50-80 LBS. 70.00-80.00.

SHEEP: 42 HEAD, 20.00-30.00; HEAVY WEIGHTS 16.00-25.00.

GOATS: LARGE 50.00-70.00, 1 AT 103.00; MEDIUM 30.00-50.00; SMALL 25.00-40.00.

PIGS AND SHOATS: 30 HEAD, HIGHER PRICES. BY THE HEAD, FEW 30-50 LBS. 28.00-36.00; 1 BRED SOW 195.00; BY THE POUND, STRONG DEMAND. 100-125 LBS. 44.00-53.00; 130-160 LBS. 39.00-43.00; 1 LOT 48.00; 5 HEAD 197 LBS. AT 42.25.

STOCK BOARS: 200 LBS. TO 41.00.

Morrison Cove Livestock

Martinsburg, Pa.
May 25, 1992

Report supplied by auction

CATTLE 177. STEERS CHOICE 70.50-72.00; GOOD 69.00-70.50.

HEIFERS: CHOICE 68.50-71.00; GOOD 65.00-67.50.

COWS: UTILITY & COMMERCIAL 46.00-53.00; CANNER & LOW CUTTER 39.00-50.50.

BULLS: GOOD & CHOICE 64.00-67.75.

BULLS: YIELD GRADE NO. 1 57.50-66.00.

FEEDER CATTLE: STEERS 72.00-90.00; BULLS 60.00-83.00; HEIFERS 59.00-74.00.

CALVES 256. PRIME NO MARKET TEST; CHOICE 91.00-97.00; GOOD 86.00-90.00; STANDARD 55.00-85.00; HOLSTEIN BULLS 90-130 LBS. 110.00-135.00; HOLSTEIN HEIFERS 90-130 LBS. 130.00-171.00.

HOGS: 46. US NO. 1-2 44.50-45.75; US NO. 1-3 42.50-43.75.

SOWS: US NO. 1-3 32.00-39.00. BOARS 27.00-34.00.

NO FEEDER PIGS. SHEEP 54. CHOICE 70.00-75.00; GOOD 65.00-67.00; SLAUGHTER EWES 12.00-32.00.

GOATS: 15.00-49.00. 5 LOADS OF HAY. ALFALFA 100.00-112.50; 5 LOADS OF STRAW 75.00-129.00.

Dewart Livestock

Dewart, Pa.
May 25, 1992

Report Supplied by Auction

STEERS: 59.00-66.50. HEIFERS: TOO FEW TO QUOTE. GOOD COWS: 48.00-54.50.

CANNERS AND CUTTERS: 38.00-48.00. BULLS: 49.00-61.25.

VEAL: 90-190 LBS. 99.00-167.50; 70-90 LBS. 75.00-99.00.

HOGS: 40.00-45.00. SOWS: 30.00-38.00.

FEEDER PIGS: 15.00-33.00 HEAD.

SHEARSON LEHMAN BROTHERS
FORNEY LONGENECKER
SECOND VICE PRESIDENT / FINANCIAL CONSULTANT / COMMODITIES
29 E. KING STREET SUITE 200 LANCASTER, PA 17602
717 295 8914 800 342 7033 PA 800 441 1997 US

PARADISE CONCRETE METERED DELIVERY!
You can't over or under order! Guaranteed Savings! Variable Pricing!
DEFINITELY CALL US BEFORE YOU BUY!
Delivery When You Need It! Large And Small Trucks
717-687-0990
Dedicated To The Farm Community Mitch White Eric R. Probst

PUREBRED HEIFER SALE

Sat., June 6
10:00 A.M.

HORSE SALE
June 19, 1992
7:00 P.M.

NEW HOLLAND SALES STABLES INC. THE ACTION AUCTION

LIVESTOCK IS OUR ONLY BUSINESS

Load Purebred And Grade Holsteins From Dennis Martin, Ontario

Load Canadian Cows From Roy Johncox

Plus Local Fresh & Springer Cows. See Page B42 For Details

MONDAY

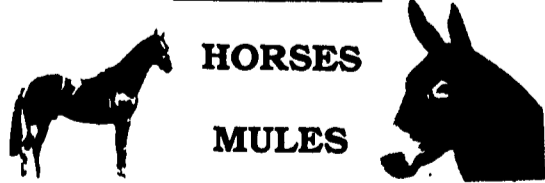
SLAUGHTER HOGS



EARLY BIRD HOG SALE
8:00 A.M.

Sell Your Hogs At New Holland Sales Stables, Inc. See them weighed, sold and pickup your check.

10:00 A.M.



HORSES
MULES

1:30 P.M.



BEEF SALE
SHEEP
GOATS
CALVES

WEDNESDAY

HEIFER SALE

11:00 A.M.
COW SALE 12:00 NOON



We have the usual run of 50 to 100 Heifers, all ages. Loads of fresh cows and springers from our regular shippers. Also some local fresh cows and springers.

1:30 P.M.
FEEDER PIG SALE



Pigs are accepted after 6:30 A.M. State graded from 8 to 12. Dairy Barn and Feeder Pig Barn are cleaned and disinfected weekly for your protection.

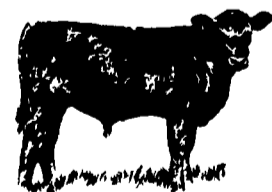
THURSDAY

Beef Auction
10:00 A.M.

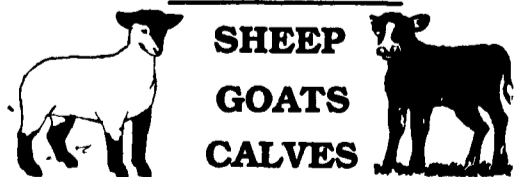


BULLS
STEERS
BEEF COWS

1:00 P.M.
STOCKERS
&
FEEDERS



12:00 NOON



SHEEP
GOATS
CALVES

NEW HOLLAND SALES STABLES, INC.
12 Miles East of Lancaster Off Route 23, New Holland, Penna.

MANAGERS

Norman & David Kolb - 717-397-5538

Field Representatives

Luke Eberly - 215-267-6608 738-1865
Homer Eberly - 215-267-3047
Ron Ranck - 717-656-9849

Sale Barn Office Manager
Roger Floyd - 717-354-4341
FAX # 717-355-0706

Order Buyer
Paul Good - 215-445-6662