

JD 2800
moldboard plow,
7 bottom, on-the-
go variable width,
auto reset.
\$7,800

Orthman Phase II
Guidance System
\$2,100

Middleburg, PA
(717) 837-0724

600 Lb. 3 Pt., \$375
1000 Lb. 3 Pt. - \$395
Side Dresser - \$150
1000 Lb. Pull
Type - \$550



KUTZ FARM
EQUIPMENT, INC.
Pine Grove, PA 17963
717-345-4882

FINEST OF THE
FINE SINCE 1879



Farm Motor Oils

- SPECIAL DUTY 15W40 \$207.00
- SPECIAL DUTY 30.....\$204.95
- TRACTOR
HYDRAULIC.....\$203.95



NOLT'S AUTO PARTS

Ephrata Manheim Fivepointville
(717) 738-1171 (717) 665-3216 (215) 445-6714

FREE YOURSELF FROM SPREADER CHAINS AND SAVE MONEY.



The proven Hydra-Spread design can free you from the grief and maintenance of spreader apron chains for good!

This low maintenance spreader features solid poly boards both on the sides and the floor for slippery, no-stick performance. Hydraulic push power replaces the extensive mechanism needed in ordinary spreaders.

Why pay more for yesterday's ideas and designs? The design of tomorrow is PRICED RIGHT and will be on the job for years. We deliver to your farm.

For more information, call:

Leola, PA
M.M. Weaver & Sons
717/656-2321

Martinsburg, PA
Bill Cowan
814/793-4293

Frederick, MD
**Doody's Mechanical
Service**
301/662-4580

N.J. and Delmarva
Jones Dairy Service
(609) 267-0198

Dealer Rep: Scott Douglas 518/529-7326

FOR SALE

- (1) Model 2-85 White Tractor Cab w/Air, 20 In. Tires, Good Cond.....**\$10,900**
- (2) Model 7300 White Combine Diesel, 10 Ft. Header, 2-Row Corn Head, 495 Hours, Good Cond.....**\$7,900**
- (3) Model 1835B Case Skid Loader, 1100 Hours, Like New.....**\$9,200**
- (4) Model 316 N.H. PTO Baler w/Thrower, New Cond.....**\$8,000**
- (5) Ford Jubilee w/Post Hole Digger, 7 Ft. Mower, 3-Point, Original Paint, Must Sell Together.....**\$2,900**
- (6) 1950 Packard 4-Door Sedan, 8-Cyl.....**\$3,900**
- (7) 1986 Freightliner Cabover, 3206B Cat Engine, 160" Wheelbase, 11x24.5 Tires, 14609A Trans., 4 Spring Suspension, Air Dryer, Air Ride Seat, Engine Heater, 40,000 Lb. Rears, Good Cond.....**\$14,500**
- (8) 1979 American 45 Ft. Possum-Belly Trailer, Alum. Bud Wheels, Left-Side Load, Rear Door, 11x24.5 Tires, Good Cond.....**\$7,500**
- (9) 1977 Lincoln Continental 4-Door, 65,000 Miles, Orig. Paint.....**\$4,900**

FOR FURTHER INFORMATION
CONTACT

GREEN VALLEY FARM

P.O. BOX 655
UWCHLAND, PA. 19480
(215) 458-5060
CALL AFTER 6:00 P.M.

44 & 60 Small Knife Drum
Assemblies For All JD Self Propelled
Choppers, Including 57 & 5800 Series
& 3800 Pull Type

**New Style J.D. Quick Adjust
Shear Bar Installed**
Reconditioned Cutter Box With New Style
Shear Bar & Heavy Duty Sharpener Ready
For Exchange, Also Aggressive Top Feed Roll
& Hydrostat Units For Exchange

Chopper
REBUILDING SERVICE

NEW GEHL EQUIPMENT

- MC 2170 MO-CO.....\$7,895
- FB 1580 Blower.....\$3,300
- MS 325 Spreader.....\$6,750
- MX 125 Mix-All.....\$7,995

NEW BRILLION EQUIPMENT

- PD 12 Pulverizer.....\$1,965
- PDT 14 Pulverizer.....\$2,850
- PTD 16 Pulverizer.....\$3,000
- BRS 6302 6R Cultivator.....\$2,640
- MLS 1483 Pulv/Mulcher.....\$7,595
- SSLP Grass Seeder.....\$1,950

USED TRACTORS

- JD 1020 w/Loader.....\$6,950
- IH 574 w/Loader.....\$7,995
- Ferguson T020.....\$2,375
- Ferguson T030.....\$2,995
- JD 110, 1963 S.N. 3338.....\$1,795
- JD 520 w/Fenders.....\$3,895

USED EQUIPMENT

- White 5100 4R Planter.....\$2,475
- IH 700 4 Btm. Plow.....\$1,095
- JD 5200 SP Harvester
w/Heads.....\$34,900
- AC 333 6R planter.....\$3,495
- MD 7', 2 Pt. disc.....\$375
- Badger BN1040 Blower.....\$495
- JD 1209 MOCO.....\$2,595
- JD 338 Baler w/40 Ejector.....\$10,500
- Gehl 135 Grinder Mixer.....\$2,100
- Owatonna Mustang 345 Skid
Loader.....\$5,900
- Bobcat 610 Skid Loader.....\$4,995

**15% Off John Deere
Coats & Jackets**



Gutshalls, Inc.
Carlisle Loysville
(717) (717)
249-2313 789-4343

SALE SALE SALE

Barrick Tire Sale

Harry C. Barrick
455 Center Road, Newville, PA 17241
717-776-5762

"Authorized Safemark Dealer"

11Lx15 Imp	8 ply	\$ 37.95
11.2x28	4 ply	\$110.00
9.5x32	6 ply	\$145.00
11.2x24	4 ply	\$113.00
11.2x34	4 ply	\$168.70
12.4x28	4 ply	\$138.00
13.6x28	4 ply	\$155.00
13.9x36	6 ply	\$241.34
15.5x38	6 ply	\$241.10
18.4x28	6 ply	\$315.00
18.4x34	6 ply	\$315.00
18.4x38	6 ply	\$349.00

Goodyear Radial

18.4R38	\$484.00
20.8R38	\$666.00

All size tires available for car, truck, tractor, or recreational vehicle, call for pricing

Tractors, Tractors, Tractors

Over 300 tractor inventory mostly antique tractors in all stages of restoration a few of the rare ones on hand are: MF 88's and 98's

JD 50 demonstrator; AR restored; R (Nice); 820 (Nice); 40 Orchard restored (Rare); unstyled G; D (Like New) Cockshutt 60 std.; 60 row crop; 770 std; 20, 30, and 40's; 1555 std.; 1655 std.

Complete line of Oliver's including 440's; Super 44; Industrial 50; Industrial 990, 660 D; 66 Orchard; 66 D; 66 std.

Massey Harris 55 diesel

Case

Industrial VAC or VAI and high crop VAC and wide front VAC

Many miscellaneous brands also available

Also many older hard to find toy tractors and newer collector additions, call with your "want list, if we don't have it, we'll get it."



WISCONSIN ENGINES



Liquid Manure Pumps
Portable & Stationary

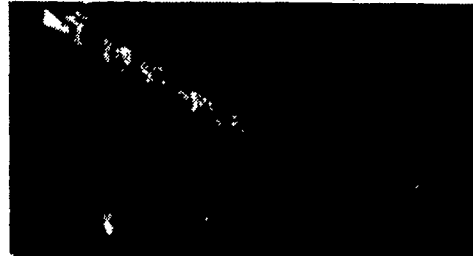
USED TRACTORS

- IH 806, 4WD.....\$5,950
- AC 8030, 4WD, w/Duals, Nice.....\$18,500
- IH 806D.....\$5,800
- IH 706.....\$3,900
- AC D19.....\$3,900
- IH Front Wheel Assist Assembly, Fits 06 & 56 Series.....\$2,400

USED EQUIPMENT

- Monitor, Complete 4 Row John Deere 7000 Set.....\$450
- Noble 4 Row Cultivator.....\$1,250
- JD 2800, 5 Bot. Plow.....\$2,800
- White 598, 4 Bot. Plow, Variable Width Excel.....\$3,950
- JD 400 Rotary Hoe.....\$975
- Hesston 7150 Hydraulic Sharpener, 2 RN Head & Grass Pickup Head.....\$3,950
- (New) NH 456 Rake.....\$2,850

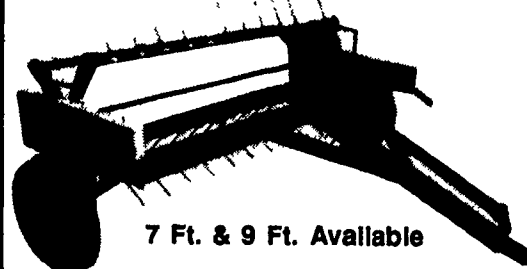
ZIMMERMAN PORTABLE ELEVATORS



WELL BALANCED, RUGGEDLY BUILT FOR MANY YEARS OF TROUBLE FREE SERVICE

From 28 Ft. to 48 Ft. Available

ZIMMERMAN HEAVY DUTY HAY TEDDER - 790 SERIES



7 Ft. & 9 Ft. Available

Zimmerman 990 Forage box
Hydraulic Powered



MILLER'S REPAIR

1 Mile North of Bird In Hand
8 Miles East of Lancaster
Ph. 717-656-6109