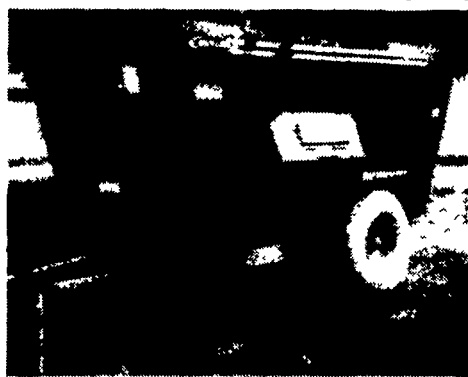


**IH 1586**  
Cab, TA, 3500 Hrs., Triple Remote  
**\$8,800**  
(717) 532-8926



**Butler Mixer  
J-Star Scales**  
Stainless Steel Bottom  
**\$5,850**  
Call 301-898-3233

**AIR COMPRESSOR**



Try Our Service  
Quality You Deserve  
We repair most any brand portable Gas & Electric replacements available  
New & Rebuilt Compressors

**WE ALSO STOCK**

Air Hoses & Supplies  
Filters, Regulators, Oilers  
**PLUMBING SUPPLIES**  
Galvanized & Plastic Pipe  
"We Cut & Thread Pipe"  
We Have Water Pumps  
We Repair Most Brands  
We Have The Pump Of Your Choice  
We Have Air Ceiling Fans  
We Stock Hydraulic Hoses, Motors & Pumps  
We Pull Water Pumps  
We Install Air Compressors  
We Install Air Systems  
We Install Water Systems  
We Install Hydraulic Systems

For Service Call  
L. Wayne Blevins  
**717-529-6458**  
Rt. 472 to Maple Shade Rd. East  
2nd Road Right (Coopers Drive)  
1st home right  
Rt. 896 to Maple Shade Rd., west to Coopers Drive

**Stauffer Pump Works**  
501 Coopers Drive, Kirkwood, PA 17536  
Samuel S. King, Owner

Bring this ad and get 5% off on all supplies, repairs, compressors & installations.  
Does not include labor & miles  
One per customer  
Good to Sept. 1st, 1992

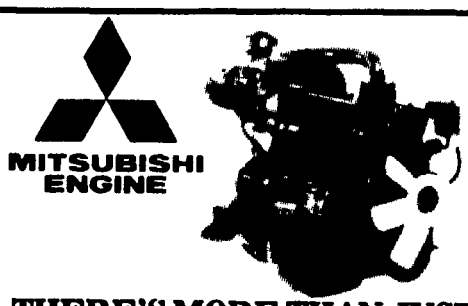
**Buy or sell farm equipment**  
**1-800-876-FARM**  
Ag Telexchange matches buyers and sellers quickly and easily by phone  
TO BUY: Call to find out who is selling the equipment you need. The call and a list of the equipment you are looking for are free!  
TO SELL: Call to list your equipment for 90 days for a one-time minimal charge. No commissions or finders fees.

**Ag Telexchange**  
P.O. Box 96 • Midland, VA 22728  
fax: (703) 439-9344

**NO MORE THROWING BAGS!**



Move your palletized Seed, Pesticides, Fertilizers, Etc. with ease  
- Use A Brouwer Portable Forklift -  
Kubota Powered with 3500 lb. Lifting Capacity - Rough Terrain Capabilities carried by a 1979 GMC Brigadier 10 Wheeler - 22 ft. Flatbed  
Call Chris for Details at  
**(410) 755-6737**



**THERE'S MORE THAN JUST POWER IN THE NAME**

**There's More Selection:** 5 to 5,000 hp with specific concentration from 10 to 50 hp  
**There's More Exp.:** For over 60 years these engines have proven themselves the world over, in the most demanding applications

**LET'S TALK DIESEL POWER**

**USED ENGINES**  
White Diesel 75 HP, Complete Power Unit w/Clutch  
CR3 Lister Commander

**RUFUS BRUBAKER REFRIGERATION & POWER**

**JAMES E. HORST**  
76 Pumping Station Rd.  
Quarryville, AP 17566  
**717-786-1617**



**Ford 641 w/Roseman gang mowers**  
Ideal for Golf Courses, estate owners, etc.

**Straley Farm Supply**  
Dover, PA, York County  
717-292-2631  
FAX 717-292-0422

**MILLER EQUIPMENT CO.**  
RD 1, Bechtelsville, PA 215-845-2911



**NEW EQUIPMENT**

- |                                  |                                      |
|----------------------------------|--------------------------------------|
| <b>WHITE-</b>                    | <b>GEHL-</b>                         |
| American Series 60, 4WD, Green   | HT 242 Tedder                        |
| Workhorse 125 Tractor w/Cab      | FB 1540 Blower                       |
| No. 445 Conservation Chisel Plow | FB 1560 Blower                       |
| 6 Row, 6100 Planter, Liq. Fert.  | FB 1580 Blower                       |
| <b>BRILLION-</b>                 | MC 2170 Mower Cond.                  |
| Deep-Til Implement               | BU 970 Forage Boxes, 16 Ft. & 18 Ft. |
| 12 Ft. Pulverizer                | MS 312 Spreader                      |
| <b>KUHN-</b>                     | MS 322 Spreader                      |
| Model GA300GT Gyro Rake          | RR 262 Rotary Rake                   |
|                                  | SL 3510 Gas Skid Loader              |
|                                  | SL 4610 Diesel Skid Loader           |

- NEW IDEA-**
- |               |                  |
|---------------|------------------|
| 3622 Spreader | 3639 Spreader    |
| 3626 Spreader | 5209 Mower Cond. |
| 3632 Spreader | 5109 Mower Cond. |

**USED EQUIPMENT**

- |                                |   |
|--------------------------------|---|
| Grove Forage Box 14 Ft. w/Roof | Gehl 1200 For. Harvester, 2-Row Hd. & Hay |
| Bobcat 643 Diesel Skid Loader  | Pickup                                    |
| Gehl 4300 Gas Skid Loader      | Int. 3-Bot. Rollover Plow                 |
| Gehl 95 Grinder Mixer          | White 5100 4-Row Planter, Dry Fert.       |
| Gehl FB99 Blower               | Kuhn GF452T 17 Ft. Tedder                 |

**Belarus**

DEPENDABLE  
ECONOMICAL



31 HP to 335 HP  
**QUALITY TRACTORS BARGAIN PRICES!**  
Full Year Warranty on Parts and Labor  
Join The Move To Belarus

- |                          |          |
|--------------------------|----------|
| 31 HP Diesel             | \$5,995  |
| 38 HP Diesel 4 WD        | \$8,795  |
| 70 HP Diesel             | \$10,800 |
| 70 HP Diesel 4 WD w/Cab  | \$14,400 |
| 85 HP Diesel             | \$12,025 |
| 85 HP Diesel 4 WD w/Cab  | \$16,200 |
| 100 HP Diesel 4 WD w/Cab | \$18,925 |
| 180 HP Diesel 4 WD Turbo | \$36,500 |

**SPECIAL:**  
New 70 HP 4WD Belarus Model 572 Tractor with Cab and Belarus Heavy Duty Self Leveling Loader with 80" Bucket  
**ONLY \$15,900**  
(Also available without loader)

Visit our farm and try our tractors  
Call for literature and map.  
Leasing Available

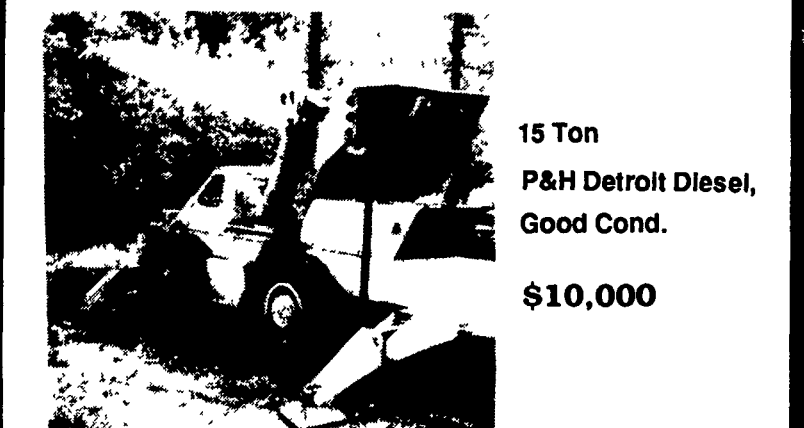
**SERVING SOUTHERN PENNSYLVANIA AND MARYLAND**  
**ANDERSON TRACTOR SALES**  
Full Service Belarus Dealer  
Front End Loader Specialists  
MANOR HILL FARM  
4600 Bredlenbaugh Ln (Off 12200 Manor Rd.)  
410-592-7422 GLENARM, MD 410-592-2386  
CALL TOLL FREE 1-800-457-5705

**MILK AMERICA'S HEALTH KICK**

**CRANES FOR SALE IN BALTIMORE**



8 Ton Prentice Crane On Mack Truck, Very Good Condition  
**\$12,500**



15 Ton P&H Detroit Diesel, Good Cond.  
**\$10,000**

12 Ton Grove Industrial, Diesel, Rough & Running... \$6,000  
15 Ton Bantam All Terrain Rotating Cab... \$17,000  
18 Ton Grove All Terrain Rotating Cab... \$25,000  
14 Ton Grove All Terrain... \$15,000

Call Alan Anytime **410-337-3570**