

'82 Ford LN700, diesel, air brakes, 28,000 GVW, 14' reefer Hackney body, good condition, \$3,900. (215)723-4606.

'85 Chevy Scottsdale C20 Suburban, 350, auto., PB, PS, air, AM-FM, 46,000 original miles, excellent condition, \$7,950. 717-733-2873

'85 Ford XLT Lariat F150, 4x4, 351 HO, auto, PB, PS, AM-FM cassette, fiberglass topper, red & white, 61,000 original miles, local 1 owner, excellent condition, \$6,450. 717-733-2873

'86 Ford F350 diesel, 4x4, dually, 4 speed, aluminum wheels, loaded, low mileage, excellent condition, \$10,500. 717-382-4830.

'86 GMC 3500 dual whl. w/9' Omaha standard stake body, 350, auto, PS, PB, AM-FM, dual tanks, 10,000 GVW, 66,000 miles, excellent condition, \$6,950. 717-733-2873

'87 Chevy C10, 1/2 ton, 4x4, 305 FI, auto., PB, PS, AM-FM, 6,250 GVW, rally whls., red & white, excellent condition, \$8,975. 717-733-2873

'87 Chevy C20, HD, 1/2 ton, 350 FI, auto, PB, PS, air, AM-FM, dual tanks, 8,600 GVW, red, 36,000 miles, \$6,950. 717-733-2873

'87 Chevy C10 1/2 ton pickup, 305 FI, HD, 4 spd., PS, PB, AM-FM, 47,000 miles, dark blue, \$6,700. 717-733-2873

'87 Coose stock trailer, gooseneck, (3) 8' compartments w/2 center doors, 8' goose. Good f/horses or cattle, \$4000. Call Bill at (717)839-9841.

'87 Ford F250 XL, 4x4, super cab, 351 HO, auto, PB, PS, AM-FM, dual tanks, 8,800 GVW, green & tan, excellent condition, \$8,600. 717-733-2873

'87 Ford XLT Lariat 4x4, one owner, 2-tone gray/silver, 300-6 cylinder, automatic, air, much more, \$7800. 717/252-0601.

'88 Chevy Cheyenne 2500, 1/2 ton, 4x4, 350 FI, auto, PB, PS, air, AM-FM cassette, 44,000 miles, black, excellent condition. 717-733-2873

'88 Dodge Dakota LE, 4x4, 3.9, V6, auto., PS, PB, PW, PDL, cruise, tilt, air w/ fiberglass topper, red & charcoal, 46,000 miles, excellent condition, \$8,975. 717-733-2873

'88 Ford F250 HD, 1/2 ton, 351 EFI, 5 spd., PS, PB, AM-FM, dual tanks, 8,600 GVW, charcoal, 35,000 miles, \$8,900. 717-733-2873

'89 Chevy 3500 dual whl. w/12' Midwest stake body dump, 350 FI, 4 spd, PS, PB, like new, \$12,900. 717-733-2873

'89 Dodge D250 1/2 ton, 4x4, 318, auto., PS, PB, AM-FM, 7,500 GVW, dark blue, 46,000 miles, excellent condition, \$9,200. 717-733-2873

'90 Chevy Beauville Extended 11 passenger Van, 350 FI, auto, PB, PS, PW, PDL, cruise, tilt, dual air, AM-FM cassette, 28,000 miles, charcoal, excellent condition, \$13,995. 717-733-2873

'90 Ford F250 Cargo Van, 300 EFI, auto., PB, PS, 31,000 miles, like new, \$9,950. 717-733-2873

Arnot '86 Aluminum 4 Horse Scant Load 18' Bumper Pull Trailer w/ Dressing- Tack Room. Saddle Racks, Water System & More. \$4600- Harford County, MD 301-692-5350.

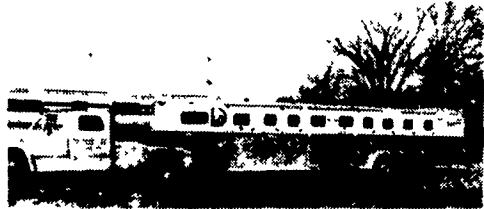
ENGINE: 292, 6cyl, low miles, Chevy, good condition, \$350. (215)286-9510.

F750 Ford Flat Dump 1977, \$6800. Transmission for 1700 IH truck, 5-speed, \$300. Two rebuildable 391 Ford engines, \$300/ea. 410/287-9352 late evenings.

78 IH 2575 Tandem-Axle Road Tractor, 19 sp., 400 HP, AC, PS, and 28' dump trailer. Both in excellent mechanical condition. 814-684-3057.

FOR SALE: 1978 INT. 4070, 350 Cummins, 10 spd, wet line, 70% rubber, \$4500. 215/286-6861.

FOR SALE: 1978 Chevy Bulk Feed Truck w/Blower, Call 733/2218.



**1985 Lite Line
9 Horse Slant Load
Trailer And
1980 GMC 60 Truck
Both For \$22,500
Call (717) 244-8049**

NEW DIESEL TRUCKS



1992 F350 Chassis Cab 4x4 Diesel
137" WB 7.3L Diesel 5 Spd OD, 4.10 Rear Air, White #6690



1992 F250 Supercab 4x4 Diesel
7.3L Diesel Electronic Auto OD, 4.10 Rear XLT PW, PL, Air, Speed Control, Trailer Towing #7194 & 2972. 2 To Choose From!



1992 F250 4x4 Diesel
7.3L Diesel Electronic Auto OD, XLT, Trailer Towing, Air & More #9374



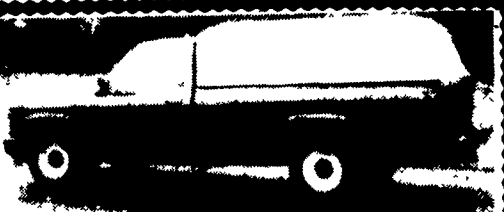
1992 F350 4x4
7.3L Diesel, 5 Spd., Air, Custom Trim 9000# GVWR #9232



1992 F350 Crew Cab Diesel
Dual Rear Wheel XLT 7.3L Diesel, Electronic Automatic OD, Air, PW, PL, 4.10 Limited Slip Rear Trailer Towing & More #0886



**On Rt. 419 Between
Cornwall And Schaefferstown
Mon. Thru Fri. 9 to 9; Sat. 9 to 4
717-949-2000**



1990 Chevy WT 1500 Series
V6 Engine, 5 Speed, OD, Red,
Excellent, 25,000 Miles
\$7,950 OBO
717/393-6710

**WANTED
TRUCK
SCALES**

60' Long,
50 or 60 ton
capacity

717/532-6425

"MARMONS"



1. 1988 3406B 425 A/A, 9 Sp., 342 Rears, Air Ride, 64" Bunk
2. 1985 3406B 400, 13 Speed, 370 Rears, Air Ride, 60" Bunk

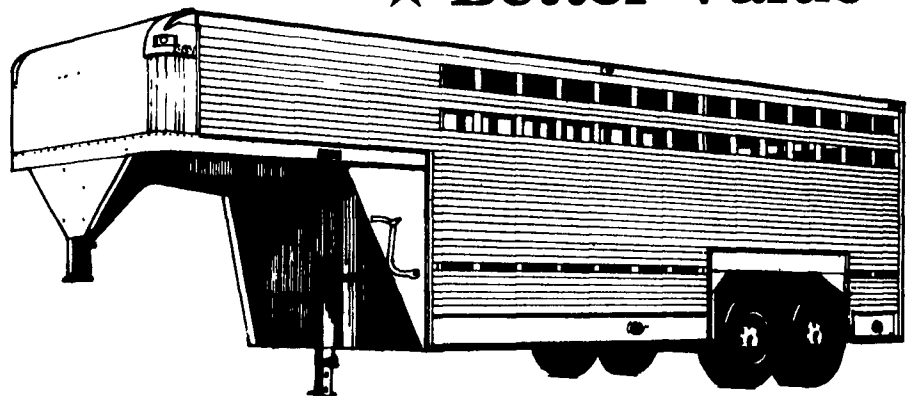
Both Trucks Available With Work To Qualified Buyers
**(717) 626-1984 or
(717) 626-1980**

1985 Chev Crew Cab 1 Ton Dually, 454 V8, AT, AC, 59K Southern Coach Conversion \$9,250
Sooner 16 Ft. Gooseneck Stock Trailer \$2,250
1978 Dodge Trans Van Motor Home 17 Ft., 318 V8, AT, AC, Michelin Tires, Used As Mobile Auction Office, But Ideal For Hunting \$3,250
1973 Chevy C60 w/16 Ft. Furniture Body, 366 V8, 4/2 Trans. \$2,250
ROBERT C. MULLENDORE
Boonsboro, MD
301-582-0546

1990 GMC Suburban 1500 SLX, 9 Pass., 6.2 Diesel, AT, Dual AC, AM-FM, 55,000 Mi. \$11,900
1990 Chevy Lumina 2 Dr., 3.1 V6, AT, Loaded, 49,000 Mi. \$7,600
1989 Chevy Celebrity 4 Dr., V6, AT, AC, CR, AM-FM Cass., 61,000 Mi. \$5,900
1989 Chevy Beretta 2 Dr., 4 Cyl., 5 Spd, AM-FM, 41,000 Mi. \$5,900
1988 Chevy Corsica 4 Dr., 4 Cyl., 5 Spd., AM-FM Cass., 39,000 Mi. \$4,500
1988 Renault Medallion SW DL, 4 Cyl., AT, AC, CR, Tilt, AM-FM Cass., 49,000 Mi. \$3,900
1988 Buick LeSabre Limited 2 Dr., V6, AT, Loaded, CD Player, 62,000 Mi. \$7,600
1987 Toyota Camry 4 Dr., 4 Cyl., 5 Spd., AC, Tilt, AM-FM Cass., 46,000 Mi. \$6,900
1987 Ford Tempo GL, 4 Dr., 4 Cyl., 5 Spd., Loaded, 47,000 Mi. \$3,800
1987 Honda Accord DX 4 Dr., 4 Cyl., 5 Spd., CR, Tilt, AM-FM Cass., 56,000 Mi. \$6,900
1985 Dodge Ramcharger 150 Royal SE, 4x4, 318 V8, 5 Spd., Loaded, 73,000 Mi. \$4,900

Brubaker's Auto Sales
Myerstown, PA
717-866-5237

**The Eby Wrangler...
★ Better Looking
★ Better Built
★ Better Value**



The Wrangler Model 2000-OH represents a new level of value in livestock trailers.

Its standard specifications, top-quality components and proven engineering are found in other Wrangler models. But the new 2000-OH is less expensive. By standardizing height and width and by limiting the number of optional accessories, Eby lowers the production costs for this model. Now you can get all our traditional craftsmanship in a top-value gooseneck.

Unlike other "budget" trailers on the market, the Wrangler 2000-OH achieves a price breakthrough without compromising quality. Consider these features, standard on the new Wrangler 2000-OH:

- 7,000# Dexter Torque-Flex axles
- Steel-belted radial tires, 10-ply rating
- Aerodynamic, attractive design
- Sealed beam lights with enclosed, externally accessible wiring
- 2-year warranty

Specifications

- Available in 14', 16', 18', 20' lengths
- 7' Width
- 6'6" Inside height

Call 1-800-292-4752



M.H.EBY, INC.

Route 23, P.O. Box 127, Blue Ball, PA 17506
717/354-4971 FAX 717/355-2114 800/292-4752
4435 State Route 29 West Jefferson, OH 43162
614/879-6901 FAX 614/879-6904 800/752-0507