

Telephone: (717)866-6581



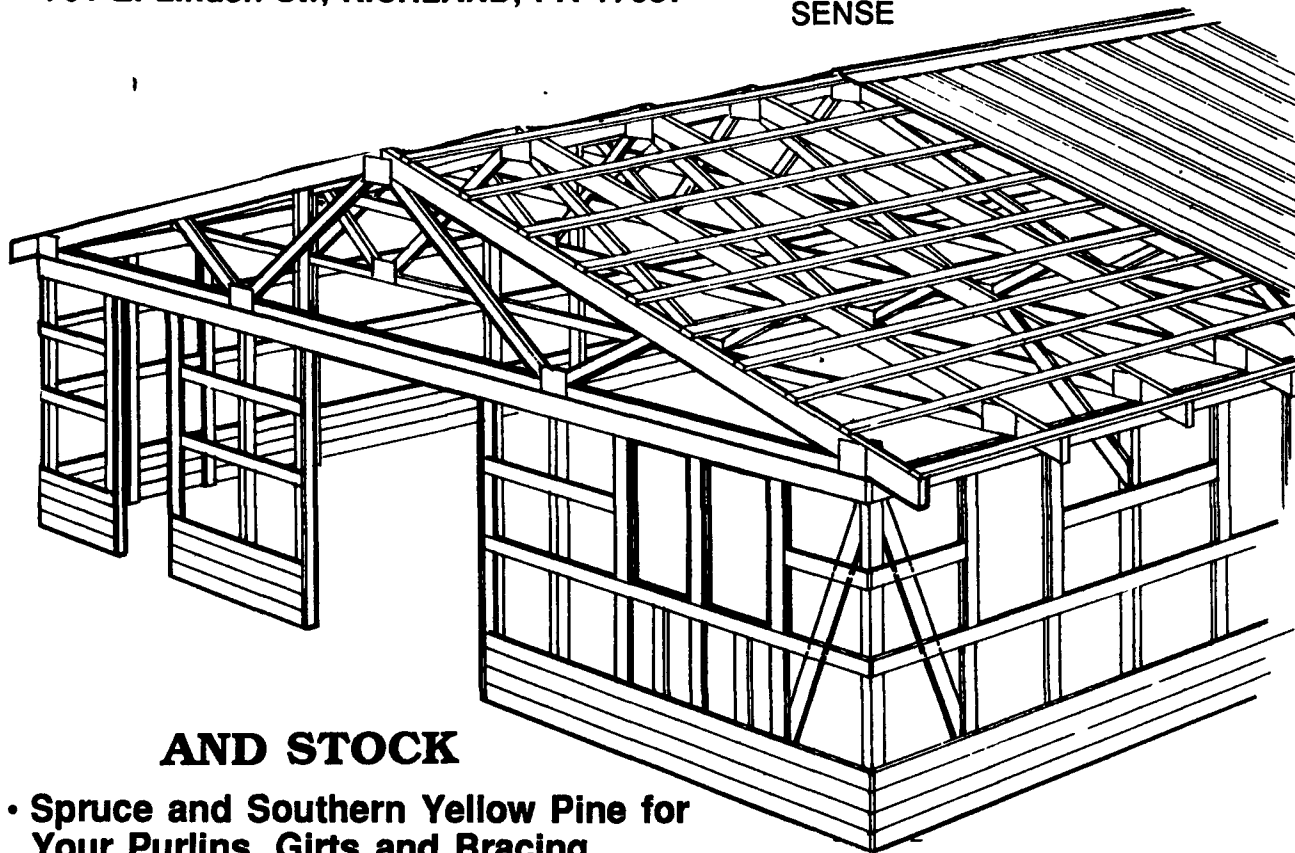
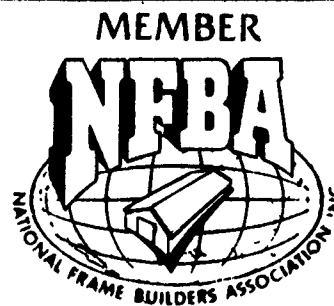
701 E. Linden St., RICHLAND, PA 17087

## Pole Building Construction Details

THREE ESSENTIALS FOR A SOUND BUILDING:

A GOOD FOUNDATION  
GOOD QUALITY MATERIAL  
PROPERLY BRACED

NEXT TO THE ABOVE IS  
COMMON HORSE  
SENSE



### WE MANUFACTURE

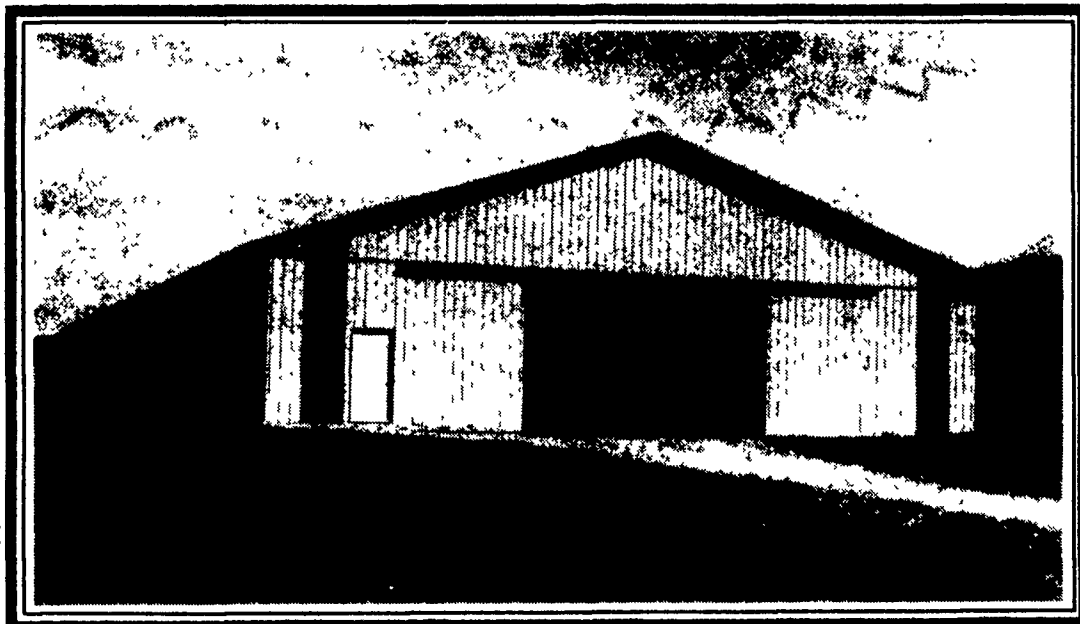
- Typical Wood Roof Trusses Up To 100' Clear Span
- Scissors Trusses For Better Ventilation
- Inverted Trusses To Create Wider Spans
- Monopitch Trusses To Attach To Existing Buildings.
- Attic Trusses For Hay Or Straw Storage
- Gambrel Trusses For More Storage Area

Also

For Your Poles We Have  
The Real Laminated Post.

### AND STOCK

- Spruce and Southern Yellow Pine for Your Purlins, Girts and Bracing.
- CCA Treated Posts And Lumber .60 Retention
- Southern Yellow Pine 2x12's Up to 24' Long
- Concrete Footer Pads
- Aluminum Fascia and Soffit
- Louvers and Vents
- Insulation (Rigid & Fiberglass)
- Plyco Doors, Windows and Kwik Frames
- Fabral Roofing And Siding (Ask Us About Grandrib 3 Plus, 10 Year Guarantee Against Red Rust From Acid Rain.)



- Equus Quality Stall Systems Designed For Quick Assembly And Built Tough To Last.
- Door and Wall Systems
- Grillwork Sections
- Cannonball Track and Accessories
- 2x6 and 2x8 Southern Yellow Pine Tongue and Groove For Stalls Is Made Per Order
- Dutch Door Systems
- All Sizes of Plywood
- 25 Year Fiberglass Shingles
- All Types Of Fasteners

# Versatile and Economical For Fast, Strong Construction.