

Ducklings: home hatched rovens \$2 each. Bunnies: mini-lops & Jersey woolys \$10 higher with pedigrees. Berks Co. 215-987-6674.

Reg. half-Welsh yearling filly, grey, mature about 13H, gentle, \$350. Antique lap/ buffalo robe, fair cond., \$100. Sch. Co. 717-648-4484.

JD loader brackets for #48 loader fits row crop tractors. Wayne Co. 717-224-4162.

JD 24T baler w/a type E02BE thrower including hydraulics, ex. cond. field ready, barn kept, \$2500. Bucks Co. 215-968-2649.

Gleaner E111 10' hume reel, 2R corn, shed kept, 150 bu. gravity wagon rebuildable Mack 673 engine. York Co. 717-432-5348.

2 Ford 6000 dsl. engines, complete rolls from NH 404 crimper. Dauphin Co. 717-469-2307.

Backhoe - JD 310 dsl, ROPS new tires \$7800. Dozer JD 450 dsl. 6-way blade \$6900 OBO. York Co. 717-993-3350 after 7PM.

Shetland pony geld 4 \$300. Spring wagon v.g. \$600. Riding clothes, boots, hat, small. Lanc. Co. 717-548-3207.

1987 Chevy dually dsl. 54,000 4-dr. auto. 4WD loaded \$11,500. 4-horse gooseneck 1990 \$3700. Buy together get deal. Luz. Co. 717-477-5483.

10HP walk behind garden tractor, cultivator, plow, disc harrow, very good cond., complete outfit \$250. Lanc. Co. 215-445-5990.

Going out of business. Yorkshire & Hampshire, bred & open gilts, disease free, all vaccinated. Lanc. Co. 717-872-4152.

IH 3288 w/turbo charger 1800 hrs. 4 post roof 2440. Garrett Co. 301-334-4129.

TD6 62 loader crawler 4-in-1 bucket, roll bar & fiberglass roof to fit JD 2440. Cumb. Co. 717-532-9353.

Full size truck cap, paneled inside, very good cond \$75. Juniata Co. 717-694-3577.

Gleaner combine Model E 10' grain 2R corn heads good cond. Shed kept. Col. Co. 717-672-9486.

McDeering 45 baler field ready & 150 volt generator Briggs Stratton engine. Dauphin Co. 717-652-0209.

Ford PU 1979 F250 no rust, like new bed \$950. Dau. Co. 717-545-2086 eves.

Geese 2 grey females \$10 each. 215-383-0487 or 215-383-5764.

1420 Cub Cadet 46" mowing deck 14HP twin engine 1 yr. old good shape, make offer. Chester Co. 215-932-9583.

Reg. sorrel Belgian mare, 1 yr. old in March. Stands 15.2H. Sire: Orndorff Esquire \$1125. Lanc. Co. 717-354-4319.

Farmall A nice cond., restored, new paint, decals, wheel weights, sickle bar attached, \$1800. Lanc. Co. 717-653-6708 eves.

Ford front loader off 8N \$250, tractor chains 16' 7000 lb. trailer inspected \$1300. Lanc. Co. 717-687-7336 nights.

Adorable AKC Chocolate Lab. pups: champion bloodline, shots, wormed, \$250. Ready June 8. Lanc. Co. 717-859-3159.

Mustang 1700 skid loader \$3275, NH trailer mower \$875, corn drag \$275, JD 400 rotary hoe \$1500, 9' Brillion packer like new \$475. 717-354-5908.

Case 430 w/power steering & snow plow no 3PT no PTO tractor in good cond. \$1000. Lanc. Co. 717-665-5294.

Toy Pomeranian male proven 1 1/2 yrs. tiny blk. show type, blk. cochins. N.Y. 516-722-3842.

JD 10' Rotoflow fertilizer spreader, AC WD45 tractor, WFE, loader & plow 1000 bales bright wheat straw. Bucks Co. 215-249-9136.

Int. 155 manure spreader fair cond. \$450 OBO. York Co. 717-252-2251.

36' wooden ext. ladder good cond. Also aluminum ext. ladder heavy duty. Lanc. Co. 215-267-7049.

Buff Orpington chickens, brown egg layers & good meat birds, laying hens \$1.50, chicks \$.25. Delaware Co. 215-358-2726.

1979 Southwind motor-home 27' 39,000 mi. sleeps 6, inspected, generator air, cruise, awning, stereo cassette rear bath bunks, \$12,500. 215-932-4296.

1967 MF 50 14Q hrs. on overhaul 6 ft. Bush Hog mower, \$3000. Balt. Co. 410-833-9627.

9 Charolais steers approx. 600 lb. 4 Char. heifers approx. 500 lb., also 24 ton sound ear corn in narrow crib. Sch. Co. 717-345-4489.

Fiberglass stormfront carriage, good cond., oak dash, avacoda interior, \$2200. Country Lane, Coach Shop, 700 Country Lane, Paradise, Pa. 17562.

Water lilies & pond plants for small tubs to farm ponds, \$5-\$20. Ephrata, Lanc. Co. 717-738-2755.

Grimm 2 rotor hay tedder \$575, 3 head block saw mill 52" saw, \$650. Allegany Co. 301-478-5794 after 7 p.m.

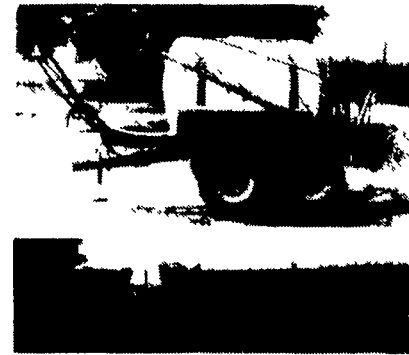
Male llama 6 mths. old, light brown & 6 wk. old black Australian swan. Franklin Co. 717-328-2423.

New JD #25 single plow 3 pt. w/coulter \$240. Northampton Co. 215-759-1202, 215-759-1908.



Your Complete Headquarters For Sprayers And Parts

HEAVY DUTY SPRAYERS BUILT STRONG TO PERFORM TOUGH



- 200, 300 & 500 Gal. Trailer Models
- 110, 150, 200 & 300 Gal. 3 Pt. Hitch Models

FEATURES AVAILABLE:

- 30', 35' and 40' Booms
- 30' & 45' All Hydraulic Folding Boom
- Quick Teget No Drip Nozzles
- Independent Boom Suspension Eliminates All Boom Bouncing.

At Last! A Reliable, New Stainless Steel AG-CHEM FOAM MARKER Reg. \$832.00 **SPECIAL \$798.00**

Each Foam Marker Contains:

- Mixing chamber for each boom.
- Electric harness for in-cab controls (on-off/left-right).
- Drop hoses for each boom.
- Hose for boom lengths up to 47'.

The Ag-Chem foam marker offers you efficient operation with a 12 volt compressor that draws only 9 amps. Independent left and right boom markers can be controlled from the cab for on-the-go operation. That lets you operate either boom marker for precise, economical foam placement. And best of all the Ag-Chem Foam Marker produces a dense foam within seconds of agitation, and has a dependable output that can be adjusted for volume.

Use with the new 80-to-1™ high concentrate foam.



TERRA-TRONICS I Electronic Monitor Measures Working Acres And Ground Speed

- Easy-to-see digital readout
- Easy-to-operate touch sensitive keys
- Operates with any field implement requiring acre measurement - pulled, mounted, or self-propelled sprayers, combines, etc

Reg. \$202.00 **SPECIAL \$176.00**

Handy Half Gallon AG FOAM

Reg. \$9.85 **SPECIAL \$8.95**

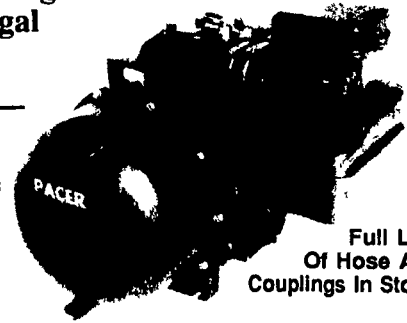
24000 CALIBRATION KIT

- TeeJet Calibration Calculator
- TeeJet Calibration Container
- TeeJet Tip Cleaning Brush
- Instruction Manual
- Agricultural Spray Products Catalog
- TeeJet Nozzle Selection Guide

Reg. \$59.44 **SPECIAL \$53.50**

Self-Priming Centrifugal PACER PUMPS

• 3 H.P. 'S' Series 1 1/2" Or 2" Ports
Reg. \$210.00 **SPECIAL \$183.75**



Full Line Of Hose And Couplings In Stock!

Features:

- Self-priming to 20 feet
- Total heads to 120 feet
- Capabilities to 200 U.S. GPM
- Built in check valve
- Equipped with 1 1/2" or 2" female threaded connections, NPT

• 5 H.P. 'S' Series 2" Ports
Reg. \$250.00 **SPECIAL \$218.75**

• 5 H.P. 'S' Series With I/C Briggs Engine, 2" Ports
Reg. \$330.00 **SPECIAL \$288.75**

• 5 H.P. 'S' Series With Honda Engine, 2" Ports
Reg. \$464.00 **SPECIAL \$406.00**

• 7 HP 'S' Series Pump 3" Ports - Reg. \$440.00..... **SPECIAL \$385.00**
• 'S' Series Pedestal Pump Only 1 1/2" or 2" - Reg. \$136.00 **SPECIAL \$119.00**

Raven Tough Polyethylene Tanks



- SPRAYER TANKS - ALL SIZES For New Or Replacement AVAILABLE FROM
- STATIONARY TANKS - For Liquid Fertilizer Storage 25 GAL. to 2500 GAL.

We Also Stock A Complete Line Of:

Teget Sprayer Nozzles And Accessories

Hyprow Pumps And Accessories

PACER PUMPS

- Sprayer Hose
- Ball Valves
- Nylon Fittings
- Poly Tanks

PAUL B. ZIMMERMAN, INC.

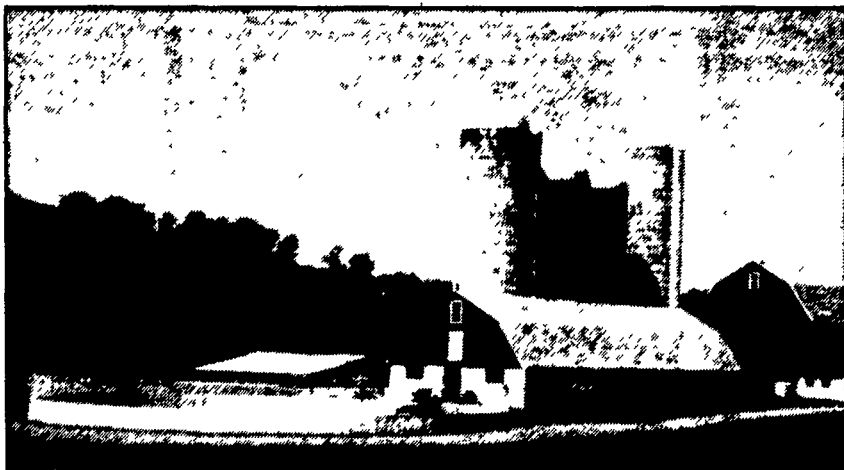
285 Woodman Rd., Leola, PA 17548
1 1/2 Miles West of Ephrata
(717) 738-1121

Hours: Mon., Tues., Fri. 7-5:30
Wed. 7-5:30
Sat. 7-4:00

• HARDWARE • FARM SUPPLIES • CUSTOM MANUFACTURING • CRANE SERVICE



• Agricultural • Commercial • Residential



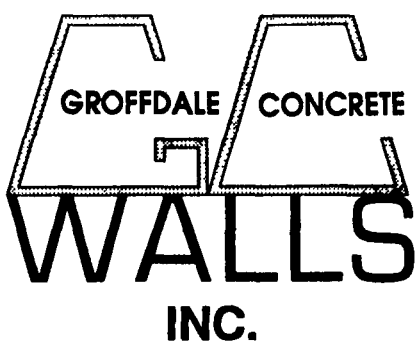
Partial In-Ground Tank Featuring Commercial Chain Link Fence (5' High - SCS Approved)

- Retaining Walls • Bunker Silos
- Manure Storage, Etc.

LET OUR EXPERIENCE WORK FOR YOU-ESTABLISHED SINCE 1979!
WE ORIGINATED THE CONCRETE SYSTEM!

Sizes And Layouts To Your Specifications

We Work Hard For Customer Satisfaction!



430 Concrete Ave., Leola, PA
717-656-2016

Authorized Dealer For KEYSTONE CONCRETE PRODUCTS

- H-Bunks
- J-Bunks
- Trench Silo Walls
- Hog & Cattle Slats