

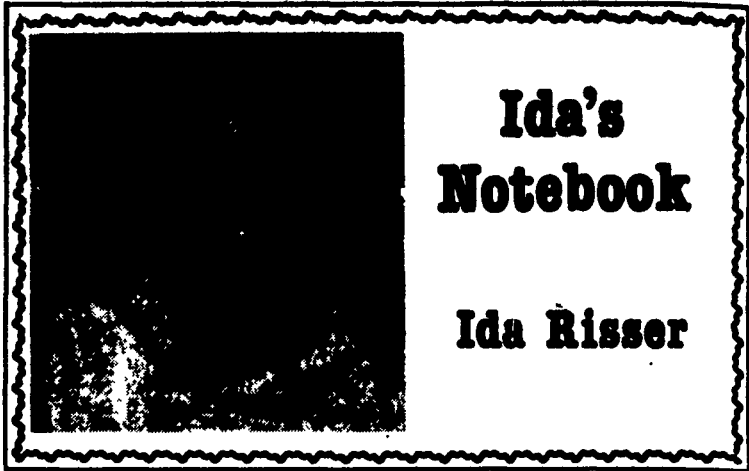
Extension Plans Singles Convention

BLOOMSBURG (Columbia Co.) — "Living, Learning, and Laughing" is the theme for the second annual convention to be held June 5 to 7, on the Bloomsburg University Campus for single adults age 25 and over. It will offer opportunities for social interaction and self development among adults who are single by

divorce, legal separation, death of a spouse, or by choice.

"The registration deadline is May 20", according to John Abell, convention facilities chairperson and assistant dean of the school of extended programs at Bloomsburg University. Late registrations will be accepted on a space available basis until June 2. However, Abell

notes, "If the early registration response is any indication, the goal of 300 participants will be reached well before June 2." For information, call the Magee Center at (717) 389-4420 or write PA Singles Convention, Magee Center, 700 West Main Street, Bloomsburg, PA 17815.



**Ida's
Notebook**

Ida Risser

Supermarkets Use Codes To Identify Plastics

LEWISBURG (Union Co.) — Have you been wondering about the numbers that are appearing on the bottom of products you buy that are packaged in plastic containers? The numbers are the result of the plastic industry's effort to make the identification and separating of plastics easier for consumers and recyclers. The numbers, which are enclosed by three solid arrows that form a triangle, indicate the type of plastic used to make the container. The seven types of plastics are described below.

1 = PET or PETE = Polyethylene Terephthalate. Common uses: soft drink bottles, some fruit juices, alcohol beverage bottles.

2. = HDPE = High density polyethylene. Common uses: (clear HDPE) milk jugs, distilled water, large vinegar bottles, grocery bags. (colored HDPE) liquid laundry and dish detergent, fabric softener, motor oil, antifreeze, bleach and lotion.

3. = V = Vinyl/Polyvinyl Chloride. Common uses: vegetable oil bottles, mouthwash, salad dressings.

4. = LDPE = Low density polyethylene. Common uses: bags for dry cleaning, bread, produce and trash and for food storage containers.

5. = PP = Polypropylene. Common uses: battery cases, dairy tubs, cereal box liners.

6. = PS = Polystyrene. Common

uses: yogurt cups, clear carryout containers, vitamin bottles, fast food, spoons, knives and forks, hot cups, meat and produce trays, egg cartons, clamshell carryout food containers.

7. = Other types of plastics = Plastics labeled with a seven (7) are made from a type other than the six most common types listed above or they can be made from multiple layers of different types of plastics. Common uses: squeezable ketchup bottles, most chip snack bags, juice boxes (individual servings).

While the coding system will make it easier to sort the different types of plastics for recycling, most communities that accept plastics in their recycling program collect PETE (1) in the form of plastic soda bottles and HDPE (2) in the form of milk jugs.

Life can get so hectic! We were trying to catch up with our work after being away from home for 10 days. Then, our 17-month-old grandson began to spend his days with us as his mother was in the hospital.

Having a toddler to watch and diaper was not part of my plan for this spring. I had been transplanting some flowers from the farmhouse to our present home. There must be some 20 perennials that have been moved so far.

Our grandson, Bradley, likes to play with a bucket of water as I dig holes for the plants. Our newly seeded lawn had grown quite tall and he helped me rake it after it was finally mowed. He loves to be outside and chase our two cats and four kittens. He is quite husky and

big for his age but he obeys us and only occasionally is tempted to do things his way.

The other night his father came for him, as he sleeps in his own crib, and we all saw a big deer in our backyard. It was dusk and it moved cautiously until it came to an open field where it disappeared in the distance.

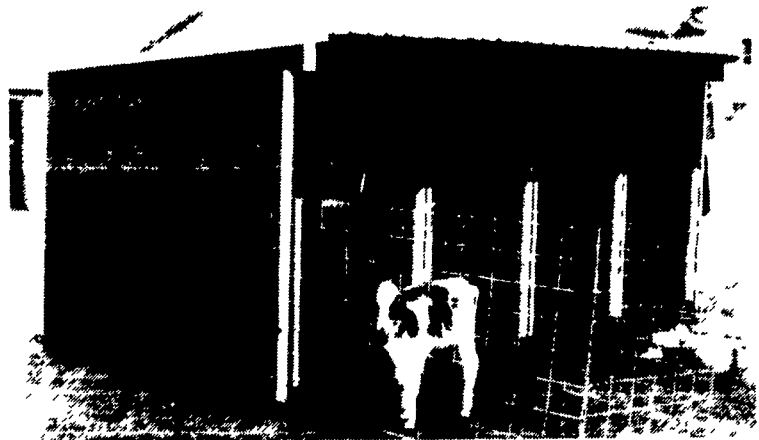
My Bible Study Group will meet at our home this month. Now that is a reason to do some extra cleaning. And with a husband who works on the farm and drags home bits of hay and shredded newspaper plus a young child who puts his hands all over the big glass doors there is a lot of work to get done.

Baking an apple cake for refreshments will be a pleasure as that is a job that I enjoy doing.

**AGRICULTURE'S
LEADING EDGE
FFA**

MILK. IT DOES A BODY GOOD.
MIDDLE ATLANTIC MILK MARKETING ASSOCIATION, INC.

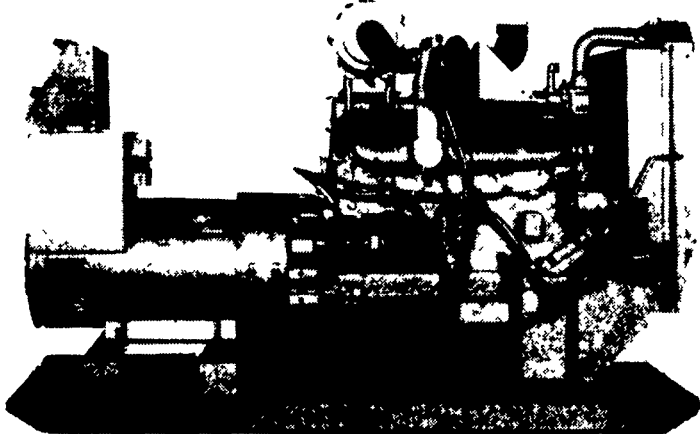
CALF KENNELS



Also Available: Calf Hutches And Bulk Plywood Feed Bins, Horse, Sheep & Hog Shelters
LOCUST POST & FENCE BOARDS

MFD. BY: **STOLTZFUS WOODWORK**
Rt. 897 North - Gap, PA 17527
717-442-8972

STANDBY GENERATORS



Automatic Systems

USED
EQUIPMENT

- 2 - 15 KW Diesel Generator
- 1 - 30 KW Diesel Generator
- 1 - 35 KW Diesel Generator
- 1 - 7 1/2 HP Phase Converter
- 1 - 400 Amp Manual Transfer Switch

24 HR
SERVICE

MAXI-POWER

RADIO
DISPATCH

330 Fonderwhite Rd. Lebanon, PA 17042
717-273-4544 1-800-272-MAXI

**MOISTURE IN AIR LINES IS... OR WAS...
A SERIOUS PROBLEM -**

WE NOW HAVE A POSITIVE SOLUTION!

THE NEW ELIMINATOR FILTER

INVERSE FLOW - DEPTH SEPARATION AND FILTRATION

• LOWER COST • 100% CONDENSATION-FREE AIR • IMPROVED COMPACT DESIGN •

NO DRYER OR PRE-FILTER NECESSARY

AT LAST!!!



THE RIGHT CHOICE . . . AT THE RIGHT TIME

**DON'T WAIT UNTIL YOU CAN'T OPERATE...
CORRECT IT NOW!**



Beiler Hydraulics



252 N. Shirk Rd., New Holland, PA 17557
717-354-6066

Box 56, RR 1, Atglen, PA 19310
215-593-2981