



Hog Markets

Lancaster Hogs

Lancaster Stockyards
Sat., May 16, 1992
 Report supplied by auction

461 HEAD.
 US 1 215-245 LBS. 45.50-46.75.
 US 1-2 215-245 LBS. 44.50-45.50.
 US 1-3 215-245 LBS. 43.50-44.50.
 US 2-4 215-255 LBS. 42.00-43.50.
 LIGHTWEIGHT HOGS: 195-210 LBS.
 38.00-40.00; 180-195 LBS. 37.00-39.00;
 120-180 LBS. 35.00-45.00; 80-120 LBS.
 40.00-55.00; 50-80 LBS. 35.00-45.00;
 30-50 LBS. 30.00-40.00.
 GOOD SOWS: 32.00-38.50;
 MEDIUMS 30.00-33.00; THIN SOWS:
 25.00-30.00.
 BOARS: HEAVY 28.00-30.00; LIGHT
 JR. BOARS: 30.00-32.50.

State Graded Feeder Pig Sale

at Westminster Livestock Auction
May 15, 1992

550 PIGS, 2 WEEKS AGO 527. VERY ACTIVE BIDDING! PRICES 12.00-18.00 PER HUNDRED HIGHER.
 GRADES 1&2: 45 HEAD 35-39 LBS. 86.00-95.00; 44 HEAD 41 LBS. 101.00; 140 HEAD 42-49 LBS. 88.00-98.00; 15 EARLY 42-58 LBS. 76.00-84.00; 74 HEAD 50-54 LBS. 85.00-91.00; 83 HEAD 60-66 LBS. 81.00-89.00; 22 HEAD 61 LBS. 74.00-75.00; 35 HEAD 75-78 LBS. 74.00-82.00; 64 HEAD 81-83 LBS. 70.00-78.00.
 NEXT GRADED SALE FRIDAY, JUNE 5, 1:30 P.M.

New Holland Hogs

May 18, 1992

TODAY 836
 LAST MONDAY 1060
 LAST YEAR 730

TREND: Compared to last Monday barrows and gilts 1.00 higher.
 BARROWS AND GILTS: US 1-2 215-245 lb 44.50-45.75, Few late 44.00-44.50.
 US 1 215-235 lb 46.00-46.50, Couple lots 48.00.
 US 1-3 215-260 lb 43.00-44.00.
 US 2-3 280-295 lb 41.00-42.50.

New Holland Feeder Pigs

New Holland, PA
Wed., May 21, 1992
 Report Supplied by Auction

TODAY: 917 HEAD
 LAST WEDNESDAY: 1366 HEAD
 LAST YEAR: 1132 HEAD

TREND: COMPARED TO LAST WEDNESDAY, FEEDER PIGS 4.00-10.00 HIGHER, INSTANCES 15.00 HIGHER ON 30-40 LB. WEIGHTS. ALL PIGS WEIGHED ON ARRIVAL AND SOLD BY THE HUNDRED WEIGHT.
 US GRADES 1&2: 11 HEAD 36 LBS. 86.00; 122 HEAD 40-49 LBS. 61.00-72.00; 215 HEAD 50-59 LBS.

61.00-70.00; 17 HEAD 62-65 LBS. 60.00-68.00.
 US#2: 86 HEAD 34-38 LBS. 66.00-78.00; 72 HEAD 40-46 LBS. 58.00-62.00; 57 HEAD 50-59 LBS. 55.00-58.00; 19 HEAD 73 LBS. 54.00.
 US#2&3 46 HEAD 30-39 LBS. 46.00-62.00; 9 HEAD 44 LBS. 48.00; 41 HEAD 51-52 LBS. 47.00-48.00.
 SLAUGHTER: 51 HEAD 19-23 LBS. 102.00-117.00; 78 HEAD 27-29 LBS. 56.00-77.00.

Indiana Hogs

May 21, 1992

BARROWS AND GILTS: COUNTRY STEADY. DEMAND MODERATE. PLANTS STEADY TO .25 LOWER ON LIGHT TEST.
 COUNTRY: PLANTS: US 1-2 230-260 LBS. 43.00-45.00, 43.75-44.50 FEW 45.50. 210-230 LBS. 41.50-43.50
 US 1-3 230-260 LBS. 42.50-44.00
 SOWS: STEADY.
 US 1-3 300-500 LBS. 32.00-36.00, FEW TO 37.00.
 500-650 LBS. 35.00-37.00
 TODAY'S PRELIMINARY ESTIMATE: 20,000

Isennock Auction

New Park, PA
May 20, 1992
 Report supplied by auction

SLAUGHTER COWS: 55.00 & DOWN.
 SLAUGHTER HEIFERS: HOLSTEINS 57.75 AND DOWN.
 FEEDER CATTLE: HEIFERS 245-620 LBS. 61.00-73.00, BULLS 350-470 LBS. 80.00-84.00, HOLSTEINS 265 LBS. 74.00.
 HEIFER CALVES: 90-120 LBS. 150.00 AND DOWN.
 FARM CALVES: 115-125 LBS. 129.00-132.00; 100-110 LBS. 110.00-135.00; 90-95 LBS. 100.00-120.00; 80-85 LBS. 87.00-92.00; WEAK AND ROUGH 77.00 AND DOWN.
 BOARS: 220-280 LBS. 33.50-37.50; 745 LBS. 26.25.
 HOGS: 175-215 LBS. 38.00; 255-285 LBS. 28.00-32.00.
 SOWS: 460-630 LBS. 33.50-38.00.
 GOATS: SMALL 28.00 HEAD; KIDS 21.00-31.00 HEAD.

North Jersey Livestock

Hackettstown, NJ
Tuesday, May 19, 1992
 Report supplied by auction

CALVES .46-2.10.
 COWS .35-55% .
 EASY COWS .28-.49.
 HEIFERS .47-.70% .
 BULLS .51-.67% .
 STEERS .46-.69% .
 HOGS .25-.53.
 SOWS .27-.35.
 BOARS .29-.38.
 ROASTING PIGS 15.00-48.00.
 SHEEP .12-.49.
 LAMBS EACH 15.00-60.00.
 LAMBS PER LB. 31-1.16.
 GOATS EACH 15.00-137.50.
 KIDS EACH 10.00-62.00.
 TOTAL 1024.



Hay & Grain Markets

Kirkwood Hay Auction

Kirkwood, Pa.
Tuesday, May 19, 1992
 Report Supplied by Auction

51 LOADS OF HAY.
 MIXED HAY: FIRST CUTTING 95.00-151.00, 2ND CUTTING 98.00-113.00.
 ALFALFA: 1ST CUTTING 81.00-126.00; 2ND 91.00-142.00; 3RD CUTTING 110.00-171.00.
 CLOVER TIMOTHY MIX: 119.00-121.00.
 NEW SEEDING: 151.00.
 GRASS: 74.00-100.00.
 WHEAT STRAW: 84.00-110.00.
 BARLEY STRAW: 72.00-124.00.
 RYE STRAW: 102.00.
 OAT STRAW: 92.00.
 CORN: 102.00-106.00.
 PAPER BEDDING: 40.00.
 SALE TIME 11 A.M.

Diffenbach Auction Center

New Holland, Pa.
Monday, May 18, 1992
 Report Supplied by Auction

TOTAL LOADS: 155.
 ALFALFA: 70.00-200.00.
 MIXED HAY: 60.00-225.00.
 TIMOTHY: 102.00-180.00.
 ORCHARD GRASS: 67.00-177.00.
 STRAW: 75.00-140.00.
 EAR CORN: 99.00-112.00.
 OATS: 2.55-2.70 BU.

This sale was formerly held at the New Holland Sales Stables. It is now held at Diffenbach's New Holland Auction Center Ltd., 100 W. Jackson St., New Holland, across from the prior sale location. Auction time is 10:00 a.m. Monday.

Westminster Hay

Westminster, Md.
Tuesday, May 19, 1992
 Report Supplied by Auction

TOTAL LOADS: 59.
 ALFALFA: 135.00, 1.80-3.70 BALE.
 ALFALFA MIX: 1.50-2.90 BALE.
 TIMOTHY: 80.00-95.00, 1.60-3.00 BALE.
 TIMOTHY MIX: 62.00-82.50, 1.50-2.40 BALE.
 ORCHARD GRASS: 1.90-2.10 BALE.
 ALFALFA ROUND BALES: 21.00 EACH.
 STRAW: 65.00, .50-1.80 BALE.

Frederick Co. Hay

Buckeytown, Md.
Thursday, May 21, 1992
 Report Supplied by Auction

12 LOADS. CLEAR; MARKET STRONG.
 ALFALFA: 3 LOADS 160.00-217.00.
 TIMOTHY: 3 LOADS FAIR TO GOOD 147.00-165.00, 2 DARK 110.00 AND 115.00, 1 FANCY 212.00.
 MIXED GRASS: DARK 50.00.
 STRAW: 2 LOADS BRIGHT 85.00 AND 90.00.

Regional Hay

May 18, 1992
Eastern, Pa.

HAY & STRAW MARKET FOR EASTERN PA - (ALL HAY NO. 2 AND BETTER, PRICES PAID BY DEALERS AT THE FARM & PER TON). HAY STEADY TO WEAK, STRAW STEADY.
 ALFALFA 95.00-130.00; MIXED HAY 80.00-110.00; TIMOTHY HAY 80.00-110.00, FEW REPORTED 130.00; STRAW 50.00-85.00; MULCH 45.00-75.00, FEW REPORTED 20.00.

SUMMARY OF LANCASTER CO. HAY AUCTIONS FOR WEEK ENDING 5/15/92. PRICES PER TON: LOADS: 176 HAY, 24 STRAW, & 22 EAR CORN.
 ALFALFA 113.00-187.00; MIXED HAY 102.00-200.00; TIMOTHY HAY 95.00-150.00; STRAW 80.00-127.00; EAR CORN 80.00-127.00.

SUMMARY OF CENTRAL PA. HAY AUCTIONS FOR WEEK ENDING 5/15/92. PRICES PER TON: LOADS: 97 HAY, 16 STRAW & 11 EAR CORN.
 ALFALFA 97.00-175.00; MIXED HAY 80.00-145.00; TIMOTHY HAY 87.00-132.50; STRAW 70.00-110.00; EAR CORN 90.00-103.00.

Leinbach's Hay

Shippensburg, PA
May 16 and 19
 Report Supplied by Auction

ALFALFA: STANDARD 81.00-120.00, HIGH QUALITY 125.00-150.00.
 MIXED HAY: 90.00-165.00.
 TIMOTHY: 87.00-145.00.
 CLOVER: 85.00.
 BROME GRASS: 120.00-122.00.
 ORCHARD GRASS: 77.00-130.00.
 STRAW: 70.00-105.00.
 EAR CORN: 85.00-111.00.
 MULCH HAY: 35.00-77.00.
 TOTAL: 52 LOADS.

North Jersey Market

Hackettstown, N.J.
Tuesday, May 19, 1992
 Hay-Straw & Grain Report

ALFALFA: 2 LOADS, 3.50 AND 3.60 BALE.
 MIXED HAY: 4 LOADS, 2.00-2.80 BALE.
 TIMOTHY: 1 LOAD, 2.00 BALE.
 GRASS HAY: 4 LOADS, 1.35-1.90 BALE.
 WHEAT STRAW: 3 LOADS, 1.90.
 SHELLED CORN: 1 LOAD, 6.75 BAG.
 OATS: 1 LOAD, 6.50 BAG.
 TOTAL: 16 LOADS.

Dewart Hay

Dewart, PA.
Monday, May 18, 1992
 Report Supplied by Auction

19 LOADS HAY, 74.00-152.00.
 STRAW: 4 LOADS AT 89.00-97.00.
 CORN: 7 LOADS, 89.00-97.00.
 OATS: 2.20 AND 2.35 BU.

Good's Hay

Leola, Pa.
Wed., May 20, 1992
 Report Supplied by Auction

TOTAL LOADS: 79.
 MIXED HAY: 75.00-180.00.
 ALFALFA: 69.00-180.00.
 STRAW: 67.00-107.00.
 TIMOTHY: 122.00-134.00.
 CORN: 99.00-109.00.
 GRASS: 90.00-132.00.
 OATS: 2.25 BU.

Belleville Hay

Wednesday, May 13
Belleville, PA
 Report Supplied by Auction

TOTAL LOADS: 31 LOADS.
 ALFALFA: 165.00-192.50.
 MIXED HAY: 75.00-127.50.
 STRAW: 2 LOADS, 55.00 AND 85.00.
 EAR CORN: 1 LOAD, 85.00.
 OATS: 2.65 BU.

Keister's Hay

Middleburg, PA
May 19, 1992
 Report supplied by auction

21 LOADS HAY.
 ALFALFA: 170.00-190.00.
 MIXED HAY: 75.00-190.00.
 STRAW: 7 LOADS, 75.00-105.00.
 EAR CORN: 4 LOADS, 100.00-115.00.
 OATS: 4 LOADS, 2.00-2.55 BU.
 WHEAT: 1 LOAD AT 30.00 BU.

Greencastle Hay Market

Hay & Straw
May 14 & May 18, 1992
 13 LOADS.
 ALFALFA (GOOD) 130.00-185.00.
 ALFALFA MIXED 90.00-1125.00.
 MIXED HAY: 75.00-110.00.
 BROME GRASS: 87.00-115.00.
 WHEAT STRAW: 1 LOAD AT 99.00.

Green Dragon Hay

Ephrata, Pa.
Friday, May 15, 1992
 Report Supplied by Auction

TOTAL LOADS: 56.
 MIXED HAY: 75.00-190.00.
 ALFALFA: 115.00-180.00.
 TIMOTHY: 80.00-137.00.
 STRAW: 85.00-127.00.
 EAR CORN: 97.00-110.00.
 OATS: 2.20 BU.



Walter M. Dunlap and Sons offers all cattle feeders two marketing days - Give us a call for advice and marketing conditions.

MONDAYS OR WEDNESDAYS

Consign With Us - For The Marketing Edge

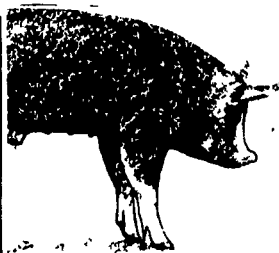
Consign Your Beef Cows
 Mondays and Wednesdays
 No Waiting to Unload - Good Weight Conditions

Next Feeder Cattle Sale
 Friday, May 29 - 11:00 A.M.

Walter M. Dunlap and Sons

Lancaster Stockyards
 Tel. (717) 397-5136

An Old Line Commission Firm Keeping
 Abreast With The Times



KIRKWOOD HAY AUCTION
 Hay, Straw and Grain Auction
EVERY TUESDAY

11:00
 Located Rt. 472 5 miles south of Quarryville or 6 miles north of Oxford corner of Rt. 472 and Noble Road.

Lloyd H. Kreider,
 Auctioneer
 AU-000513L
 No out of state checks

In this issue

Four Sections

COLUMNS

Now is the Time.....A10
 Have You Heard.....B 2
 On Being A Farm Wife.....B 3
 Microwave Magic.....B 4
 Ida's Notebook.....B16
 Farm Management.....C 3
 Swine Management.....C 5
 Poultry Pointers.....D 3

DEPARTMENTS

Editorial.....A10
 Farm Calendar.....A10
 Farm Forum.....A10
 Mailbox Markets.....B18
 Sale Reports.....B23
 4-H Happenings.....B24
 Public Auction Register.....B26
 Business News.....C 6
 Classified Ads.....D 7

FEATURES

FFA Officers Reunion.....A18
 Cumberland Benefit Auction.....A19
 Making Ends Meet.....A20
 Ayrshire Breeders.....A21
 Hauseman Fruit Farm.....B14
 Prevent Foodborne Illnesses.....B24

HOME AND YOUTH

Homestead Notes.....B 2
 Farm Women Societies.....B 5
 Home On The Range.....B 6
 Cook's Question Corner.....B 8
 Kid's Korner.....B10

DAIRY

DHIA Focus.....A28
 Top April DHIA Herds.....C 8