

1a CONSTRUCTION EQUIPMENT

1800 IHC 6yd dump 4600K, \$4500. Cat D2 Hydraulic Cyl., 500 hrs., \$3500. 215/681-4088.

25D Northwest truck crane \$6500; 22B crawler crane, direct start \$4000; LS85 link belt \$3500; Motrim hydraulic side boom mower, complete, \$1500; Eager Beaver blacktop pull box, \$250; Bantam 725 hydraulic excavator \$3600; SA200 Line welder \$750; Michigan rubber tired dozer \$3500; #25 Northwest Crane \$2500; CAT 12 grader \$2500; Adams grader, \$2500; Backhoe attachment, \$1500; (3) #25 control cable units, \$500/ea; 1300 CAT power unit \$800; Pettibone rubber tire backhoe \$5500; P&H truck crane \$7500; 3 0 2 - 3 2 8 - 5 1 1 1 ; 410-378-2785.

450 JD Crawler Loader with Ripper, Good Condition \$7800.00, 215-779-2513.

'79 IH 125E track loader w/4-N-1 bucket, good undercarriage, \$12,500. 717-382-4830.

85 Case 580SE TLB 1200Hrs. ROPS Soft Cab \$14,900; 85 Ford 555-A TLB 4X4 Cab \$20,900; Michigan 125A 3yd. Payloader \$6,900. 609-466-2953.

955L Tracks, Field/Lub 41 links, 15" D-G/pins-bushings ready to turn, \$1600. 717/938-3517.

Asphalt paving equipment for sale, paver, grader, rollers and trucks. Call 215-267-7645.

Box paver, very good condition, (American Road) 717-352-7610.

Case 1835B BackHoe RockHound General AP8Trailer 215-663-9221.

Case 580D backhoe, ROPS, '84, 4000hrs., good condition, clean, \$11,300. 215/886-5000 eves. 215/887-4476.

Cat955L 8Y1302 CAB 8000Hrs. Excellent Condition Rebuilt Engine \$35,800 215-663-9221

Cat D-3B, 1984, 3800 original hours, 90% undercarriage, excellent shape, \$18,500 Sale or lease purchase 215-293-9997

CRAWLER LOADER IH 175B, 4 in 1, cab, good condition, \$6,000 410-833-9091

Crawler Bulldozer CAT D4D, Straight Blade with Tilt, Power Shift, Canopy, Good U/C Good All Around Condition \$9250.00 Balanda Equipment Co 800-322-8030

Crawler Dozer CAT D8 Two U Series, hydraulic straight blade, undercarriage fair, runs good, \$3,500 215-679-6632

Crawler Loader 955H Caterpillar, pedal steer, V.G. U/C, Cab, \$10,800. 215-267-7074 Eves.

Crawler Loader IH125 Diesel Rebuilt Eng. Good U/C Multipurpose Bucket \$11,000 Delivered 215-683-6321.

D7 CAT hyd. blade, U/C 70%, \$10,000. (800)832-3697.

DISMANTLING FOR PARTS: Heavy construction equipment, most makes and models, parts locator service available. Balanda Equipment Co Palm, PA 18070 1-800-322-8030.

FOR SALE: Cat D40 78A Series Bulldozer, PTO, U/C, like new. Lanc. Co., No Sunday Calls. 6 pm only 717/656-9660.

Forklift 6000 lb, dual pneumatic front tires, side shift, older model, works fine. 717-652-5907.

For Sale: John Deere 350 Crawler Loader with an Arps 728 Backhoe with a 12" and 24" buckets, 717/682-9074.

Front End Loader #977, completely overhauled motor, good for land clearing, runs excellent, \$9000 OBO. 215/845-3514 after 4:00 p.m.

HD7 dozer, diesel, tracks fair, good for farming or logging, oldy but goody. 717-652-5907 8-5.

JD 450B or C Crawler Tracks, 90% tracks w/new pins & bushings, \$1250 OBO. 215/445-6156.

JD 555, 1979, 4-1 bucket, undercarriage 85%, excellent condition, \$16,500. Sale or lease purchase. 215-293-9997.

Pneumatic-Tire Forklifts under \$5,000: Toyota 3000 lb., 1978; Toyota 4000 lb., 1978; Caterpillar 6000 lb., 1979; Clark 4500 lb., 1975. Call Mike (215)326-7090.

Vermeer Stump Cutter #2465 Good Condition \$12,800 215-663-9221.

WANTED: Low hours model 743 Bobcat loader; also model 907 or 909 Backhoe attachment. Call 203-282-1707.

WANT TO BUY all makes and models of construction equipment (301)694-6148. (301)371-9299 fax.

WHEEL LOADER FA 645B, new engine, \$13,000. 410-833-9091

WOOD CHIPPER 3 pt, like new, \$2,000. 410-833-9091

NEED CASH
Sell us your **SKIDSTEER LOADER**. Bobcat, New Holland, Case, Toyota, Mustang (708) 678-3636 (708) 678-3587 Fax Marty

Case 252 roller, 2 to choose from \$9,900
Case 1825 UniLoader, 148 Hrs. \$6,900
1986 Case 450C Dozer #T2823, Very Good Condition..... \$16,500
Case 580 Super D, 2500 Original. Hrs., 1 Owner \$16,500
1990 Eager Beaver, 1 1/2 Ton Roller, Very Clean \$4,500
IH TD9 Crawler Loader..... \$6,500
JD 555A..... \$24,500

Vernon E. Stup Co.
5859 Urbana Pike
Frederick, Md. 21701
301-663-3185



1978 Huber F-1700 Motor Grader 30,000 lb. Class, 12' hyd. side shift, V6 Detroit power, power shift, good rubber, scarifier, excellent cond., low hour machine. Ready for heavy work.
\$16,900
(215) 827-7244 Chester Co.

TNH 312 Excavator
In Good Operating Condition. Must Sell
\$8,000 OBO
Phone Days
(716) 554-6713 or (716) 394-3743

FOR NEW AND USED CONSTRUCTION EQUIPMENT PARTS AND ATTACHMENTS CALL

H.E.L.P., INC.
1-800-446-0505

Specializing in Caterpillar Parts also available for Case, John Deere, IHC, Fiat, Etc. National Locator Service Available

HEAVY EQUIPMENT LOADER PARTS, INC.
R.D. #2 Box 2230 Route 22
Grantville, PA 17028

3 SILOS AND UNLOADERS

MARTIN'S SILO REPAIR
Moving Concrete Stave Silos

- Gunite Relining
- Fill Pipes
- Distributors
- Roofs
- Replacement Doors
- General Repair

907 Centerville Rd.
New Holland, PA 17557
(215) 445-9834

2 FARM EQUIPMENT WANTED

WANTED: 22" Frick thrashing machine in good condition, price included. Noah S. Hostetler, RD2, Box 47, Mitroy, PA 17063.

WANTED: Slatd wooden lids for 1/2 bu. Du-All Peach Boxes. 609-561-4346.

WANTED
Late Model Heavy Duty Backhoe Attachment To Fit NH 785 Skid Steer
717-934-2608

3 SILOS AND UNLOADERS

14' aluminum silo roof, good shape, \$300 OBO. Somerset Co. (814)634-8487.

14' Badger pack drive silo unloader, good condition, \$1650; 24' Jamesway Big Jim, 1 year old, complete less conveyor, \$6800. 814-684-1777.

2070 Harvestore with Goliath unloader; \$6,000. (814)267-4891.

2070 Harvestore structure with Goliath unloader; \$5,500. Call after 6 pm, (717)299-6180.

2 Harvestore Silo Unloaders, 1 Goliath & 1 Hercules. Best offer, 717/942-6444 Susquehanna Co.

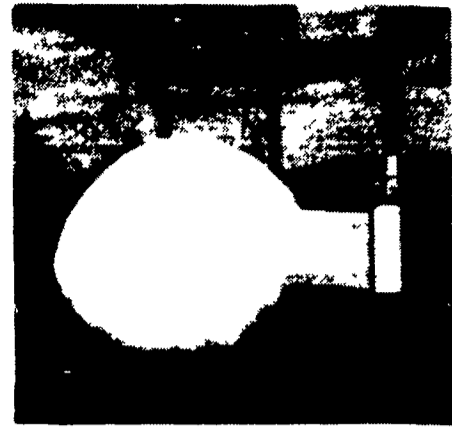
AGRI-PAC VERSA 8' silo bagger used very little, stored inside, one owner, \$16,300. 814/263-4997.

Big Jim 30' silo unloader, 30'x60' silo. Sell as one or separate. 100' H.D. mixmill auger. Culpeper, VA 703/825-1607 evenings.

FOR SALE: Hercules silo unloader, model AG 14-13, 7 sections of blower pipe. \$500 OBO. (717)272-5089.

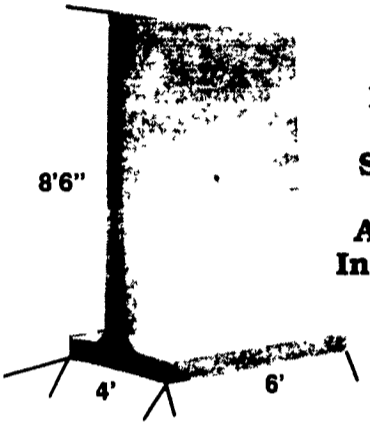
3 SILOS AND UNLOADERS

ROUND BALE WRAPPERS



A very simple well built 3 pt. hydraulic machine that will pick up heavy round bales, wrap them and set them where you want all for a price you can afford. A one man operation! Made in PA.

FARMLUND INCORPORATED
Christiana, Pa. **717-656-9919**
Dealers Wanted



KEYSTONE CONCRETE PRODUCTS 477 East Farmersville Rd. New Holland, PA 17557 (717) 355-2361

Vote For Big Jim!



Help get to the bottom of steel silo unloader problems.

The Big Jim[®] system is a proven alternative to bottom unloading. Big Jim offers high-capacity, reliability, long life, low maintenance and good-quality



haylage. New suspension system eliminates need for tripod and external support cables. See your Jamesway Big Jim[®] Dealer soon.

Unloaders for steel silos.

YOU WON'T BEAT OUR PRICES & SERVICE

LAPP'S BARN EQUIPMENT

5935 OLD PHILADELPHIA PIKE, GAP, PA 17527
PHONE: 717-442-8134
— Radio Dispatched Trucks —

JD 410 backhoe \$8500
30 JD dozers, loaders and backhoes
NEW Thomas skid steer loaders
Construction equipment repairs
J D EQUIPMENT
Pennsburg, PA 18073
215-679-5958

FORKLIFTS
2,000 to 15,000 Lb.
\$1,000 to \$12,000
Gas/LP-Diesel-Electric
Cushion-Pneumatic-Rough Terrain

Call Mike
PA INDUSTRIAL EQUIPMENT
(215) 326-7090