

32 MISCELLANEOUS

FOR SALE: Are you looking for something better than paint? Pox Coat is the answer. All-purpose, tough, durable, flexible gloss finish. Eight colors, white, clear. Brush, roll, spray. Ten year warranty on stock. CONESTOGA VALLEY DAIRY FARM, Martindale, PA 215/445-6061.

LIVE GAME FISH Fingerlings and Adults. Large and Small Mouth Bass. Spotted and Rock Bass. Bream Crappies. Trout. Channel Cats. Bullheads. Walleyes. Perch. Minnows. Northern. Pickeral. Muskies. Red Gills. Mulletta. Carp. Eels. Turtles. Frogs. Israel Corp. Also Aquatic Plants and Water Lilies. **COLORFUL** Catalog \$2.00.



Truck, Air and Parcel Post Delivery
ZETT'S FISH HATCHERIES
DRAFTING, PENNA. 16834
Phone: 614-346-6367

1968? 2BR house trailer, 60' long; 30 house shutters, good condition; aluminum beverage truck body. 215-588-9573.

FOR SALE: MFG 15' open bow, fiberglass boat. Canopy, side curtains, 60 HP Johnson motor, anchor and life vests. TeeNee trailer, spare tire and jack for trailer. Excellent condition. Asking \$3200. Phone 717/437-2788.

Large antique church bell, complete w/hanger, \$500. (717)438-3115.

New Hardinge type chucking lathe, \$5,200. Logan lathe 14"x30", \$1,800. (908)453-2088.

Pox Coat. Guaranteed for 10 Years! Great for metal, asphalt, or wood roofs, barns, silos, milkrooms, manure handling equipment, and much more! For more information write to: Fisher Iron Works, 74 S. Ronks Road, Ronks PA 17572.

Antique Windmill Frame Without The Wheel, With Canopy, Needs Paint
Decorative Purposes Only
717-653-4909

"ELECTRICAL ITEMS" FOR SALE

- 1 - 500 KW 1710 Onan Generator with Cummins Power Low Hrs. Like New Price \$37,500
 - 1 - 45 KW Lima VM Power - Good Condition.....Price \$3,800
 - 600 AMP Disconnects ... \$1,075 Each
 - 400 AMP Disconnects \$790 Each
 - 225 AMP Disconnects \$320 Each
 - 200 AMP Disconnects \$230 Each
 - 100 AMP Disconnects \$140 Each
 - 60 AMP Disconnects \$90 Each
 - 30 AMP Disconnects \$55 Each
- Special**

1 - 200 HP Motor with size 5 starter with 400 AMP Disconnect
Price..... \$3,850 Package

Fultz Bros.
R.D. 1 Box 192
Ellittsburg, Pa. 17024
717-438-3354

34 AUTOS

1946 Dodge Coupe, 6 cylinder, 3 speed, fluid drive, good interior, very little rust, runs great, \$2,500. Lebanon. (717)273-3623.

1969 Mercury Cougar Conv't XR7, excellent condition, 814/842-6126.

1982 VW Vanagon Diesel engine, 4-speed, Rare find, only 60,000 miles, Church owned, 215-678-9465.

'87 Ford F150 Super Cab, 300 EFL, 3 spd. overdrive, PS, PB, AM-FM, dual tanks, 6,250 GVW, 36,000 miles, blue & white, excellent condition, \$6,950. 717-733-2873

'87 Ford XLT Lariat 4x4, one owner, 2-tone gray/silver, 300-6 cylinder, automatic, air, much more, \$7800. 717/252-0601.

'88 Chevy Cheyenne 2500, 1/2 ton, 4x4, 350 FI., auto, PB, PS, air, AM-FM cassette, 44,000 miles, black, excellent condition. 717-733-2873

'88 Dodge Dakota LE, 4x4, 3.9 V6, auto., PS, PB, PW, PDL, cruise, tilt, air w/ fiberglass top, red & charcoal, 46,000 miles, excellent condition, \$8,975. 717-733-2873

'88 Ford F250 HD, 1/2 ton, 351 EFL, 5 spd., PS, PB, AM-FM, dual tanks, 8,600 GVW, charcoal, 35,000 miles. \$ 8,900. 717-733-2873

'89 Dodge D250 1/2 ton, 4x4, 318, auto., PS, PB, AM-FM, 7,500 GVW, dark blue, 48,000 miles, excellent condition, \$9,200. 717-733-2873

'90 Chevy Beauville Extended 11 passenger Van, 350 FI, auto, PB, PS, PW, PDL, cruise, tilt, dual air, AM-FM cassette, 28,000 miles, charcoal, excellent condition, \$13,995. 717-733-2873

ENGINE: 292, 6cyl, low miles, Chevy, good condition, \$350. (215)286-9510.

FOR SALE: 1978 INT. 4070, 350 Cummins, 10 spd, wet line, 70% rubber, \$4500. 215/296-6981.

FOR SALE: MORITZ 7'x20' aluminum gooseneck stock trailer, (new) \$7,995. Martin Hardware, Schaefferstown, Lebanon Co., Pa. 717-949-6817

FOR SALE: STOCK TRAILER 6'x16' steel gooseneck, (new) \$3,250. Martin Hardware, Schaefferstown, Lebanon Co., Pa. 717-949-6817

For Sale: 42' Fruehauf Refer Trailer for road or storage, \$1400. Lancaster Co. 215/445-5615

GMC Suburban SLE 1989 4WD, fully optioned, \$15,500. 717/741-2782 York Co.

GMC school bus, newly rebuilt V-6 engine, 25', no seats inside, make offer (215)766-0534.

Harsh truck hoist, HD, pump and PTO for Chevy, 14' sub-frame \$750 OBO. 215-536-8624.

Large Utility Body- 14'x8'x8', overhead rear door, two reels for hose or welder cables. Pipe vise, heavy duty step bumper. All lights. "Sul-Air" air compressor, will run large jack-hammer, etc. Install on Z-ton truck. \$2,500.00/OBO 518-872-0127.


Mack 1966 R400 Single Axle Dump 18spd. 210HP Still Working Must Sell 410-442-5623 After 6:00PM.

Storage Trailers, good condition. Lanc. Co. 717/687-4220 ask for Dwight.

Lancaster Farming. Saturday, May 23, 1992-C31




1979 Ford F-350 4x2
Enclosed Utility Body, 351 Auto, Power Steering, New Battery, Solid Good Running Truck
\$1,695
814-942-0404 9 to 5



1968 Chevy Dump Truck
427 Gas
\$3,000 OBO
Call (215) 445-5725



International Loadstar 1600 Dump
V8, PS, PB, 2 Speed Rear, 38,000 Original Miles, Owned By Local Boro Since New
\$4,500
Your Choice Of Two With Snow Plow And Cinder Spreader
717-865-3488



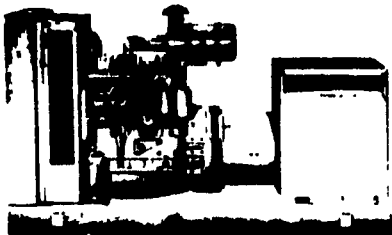
1992 - 350 Dodge LE
4x4 Dually Cummins Power, 5 Speed, 2,300 Miles.
Serious Inquiries
Fultz Bros.
R.D. 1
Ellittsburg, Pa. 17024
717-438-3354

HORSE STOCK UTILITY FINANCING NOW AVAILABLE

STOCK - \$1695 and up
HORSE - \$2750 2-horse w/tack space, feed door, T-divldr
SPECIALS - 2-Horse and 4 horse \$850 - \$1000
2-Horse new paint and floor inspected \$1400
18x6 BP Stock good condition, new floor \$1,500
5-Horse Stock GN Alum '91 Dress room, rear tack \$7,800
20x6 GN Stock '88 plywood lined inspected \$2,500
Utility 16' Bp w/rails 1-brake \$1,150 2-brake \$1,300

FISHER RD #2 McVeytown, Pa. 17051
TRAILER SALES Strodes Mills Middle Rd. (717) 242-0941

POWER SYSTEMS ELECTRIC, INC.



SPECIALIZING IN GENERATOR SALES, SERVICE AND RENTALS
(717) 933-5617

250KW	CUMMINS	(NEW)
130KW	ONAN	LIKE NEW
80KW	P-S-E (NEW)	L-P-G
35KW	P-S-E (NEW)	L-P-G
30KW	P-S-E (NEW)	Diesel
18KW	WINCO	PTO
15KW	ONAN	L-P-G

1971 Int. School Bus, runs good, seats are out. Ready to be made into a camper or portable shop, \$500. 908/297-1247.

Homespand Yarn For Sale
All Types Of Fibers - Very Reasonably Priced. Also - Custom Made Sweaters- Traditional Icelandic Styles, Spun Of Your Choice...Even Your Own Pet's Hair (Dog or Cat) Call
(717) 355-9312

PAINTED STEEL ROOFING & SIDING
• Galvanized/Galvalume
• 29/28 Gauge
• 3 Major Brands Available
• Large Stock Trim & Sheet
• SV Crimp Metal
AS LOW AS \$32.00 per/sq.
Conestoga Building Supply
New Holland, PA 17657
717-354-2613 or 1-800-544-9464

33 RECREATIONAL VEHICLES

1990 Ford hi-top conversion van, fully equipped, like new, (717)866-5841.

Allegro Class A motor-home, 33', basement model. Completely self-contained \$34,999.99 412-397-4385.

34 AUTOS

34 AUTOS

89 Buick LeSabre 4 Dr. Loaded, 29,000 Miles \$10,500

88 Honda Accord 4 Door LX, Dark Blue \$7,995

83 Dodge Pickup 150, 4x4, 63,000 Miles \$4,250

90 Pont. 6000 LE 4 Ci. Loaded, Gray, 4 Dr, 27,000 Miles \$6,500

90 Buick Skylark, Blue, 22,000 Miles, 4 Dr. \$6,200

90 Ford Escort LX 4 Dr., AT, AC, 17,000 MI., Dk. Blue \$4,650

89 Plymouth Sundance 4 Dr, AT, 30 MI., Dk. Blue \$4,700

89 Jeep Wrangler, 4 Ci, Hc, 25,000 Miles \$7,600

88 Plymouth Reliant 4 Dr., White, 45,000 \$2,995

88 F-150 V8, 4 Spd., AC \$4,300

Burkholders Auto Danville, PA 717-437-2212



1991 Plymouth Voyager
F.I. 4 Cyl., Auto, PS, PB, Air Cond, AM-FM Tilt, Cruise, Lancaster Co. 1 Owner
\$7,995
717-664-2170 Office
865-3488 Home

35 TRUCKS & TRAILERS

'71 White 4000 tandem wetline. '69 White single axle 250 Cummins. 40' flat trailer \$725. 5000 gal. fuel tank. Engines: 6V71 Detroit, 250 Cummins, 478 GM diesel, 7.5 GM, Mack 237. (717)866-2091.

'73 GMC 1/2 ton Sierra Grande PU, 454 motor, has blown piston, truck good condition with many new parts, Stainless Steel wheels, good tires, new interior in cab, \$2000. 717-442-4259.

'75 IH Fleetstar 1700, 392 gas engine, air brakes & trailer plate, body & engine good condition, good cattle trailer truck, 814/349-8054.

'78 Chevy stake dump, excellent condition, 60 series, Bucks County. (215)536-8624.

'85 Chevy Scottsdale C20 Suburban, 350, auto., PB, PS, air, AM-FM, 46,000 original miles, excellent condition, \$7,950. 717-733-2873

'85 Ford XLT Lariat F150, 4x4, 351 HO, auto, PB, PS, AM-FM cassette, fiberglass top, red & white, 61,000 original miles, local 1 owner, excellent condition, \$6,450. 717-733-2873

'86 Ford F350 diesel, 4x4, dually, 4 speed, aluminum wheels, loaded, low mileage, excellent condition, \$11,500. 717-382-4830.

'86 GMC 3500 dual whl. w/9' Omaha standard stake body, 350, auto, PS, PB, AM-FM, dual tanks, 10,000 GVW, 66,000 miles, excellent condition, \$8,950. 717-733-2873

'87 Chevy C10, 1/2 ton, 4x4, 305 FI, auto., PB, PS, AM-FM, 6,250 GVW, rally whls., red & white, excellent condition, \$8,975 717-733-2873

'87 Chevy C20, HD, 1/2 ton, 350 FI, auto, PB, PS, air, AM-FM, dual tanks, 8,600 GVW, red, 36,000 miles, \$6,950. 717-733-2873

'87 Chevy C10 1/2 ton pickup, 305 FI, HD, 4 spd., PS, PB, AM-FM, 47,000 miles, dark blue, \$6,700. 717-733-2873

'87 Coose stock trailer, gooseneck, (3) 8' compartments w/2 center doors, 8' goose. Good f/horses or cattle, \$4000. Call Bill at (717)839-9841.

1975 90 Series Chevy 10-Wheeler Dump Truck, 290 Cummins, Jake Brake, 16' Aluminum Body...\$5,500
1962 International 10-Wheeler Dump Truck, Gas Engine.....\$1,600
1962 Dodge 10-Wheeler Dump Truck.....\$1,600
Homemade 5th Wheel Lowboy Trailer, Air Brakes, Hauls 20 Tons, Single Axle, No Title..... \$300
Chester County
215/932-5209