

Dairy and Livestock Sales

Public Auction Register

Closing Date Monday 5:00 P.M.
of each week's publication

WED. JUL. 8 - 9AM, Consignment Auction. Located: Cochran Auction Complex, 7704 Mapleville Rd./Md. Route 66, Boonsboro, Md. Cochran, Miller, Harry, Flock, Aucts.

FRI. JUL. 10, State Graded Feeder Pig Sale at Carlisle Livestock Market, Inc., Exit 12 East off I-81, Carlisle, PA.

WED. JUL. 15 & THURS. JUL. 16, Large Two Day Sale Of Farm Equip. Etc. Located One Mile East Of Marion, Pa. Marion Auction Services, Owners And Managers.

FRI. JUL. 17 - 7PM, Horse Sale. New Holland Sales Stables, Inc., New Holland, Pa.

FRI. JUL. 24, State Graded Feeder Pig Sale at Carlisle Livestock Market, Inc., Exit 12 East off I-81, Carlisle, PA.

SAT. JUL. 25 - 9AM, Real Estate 10 Acre Farmette, Farm Equip. & Household. Located On Rehersburg/ Strausstown Rd. Sale For, Mr. & Mrs. Calvin Spitzer, Berks Co. Pa. Dwight D. Miller, Auct.

AUGUST

MON. AUG. 3 - 10AM, Carlson Farms Modern

Potato Farming Equipment Auction. Located Gainesville (Wyoming Co.) New York. Pirung Aucts. Inc., Wayland, N.Y.

MON. AUG. 3 - 6:30PM, P. And D. Farms Onion Equipment Complete Dispersal. Located Prattsburg, (Steuben Co.), New York. Pirung Auctioneers, Inc., Wayland, N.Y.

THURS. AUG. 6 - 5:30PM, William McCreary Farm Dispersal. Located Lindley (Steuben Co.), New York. Pirung Auctioneers, Inc., Wayland, N.Y.

WED. AUG. 12 - 9AM, Consignment Auction. Located: Cochran Auction Complex, 7704 Mapleville Rd./Md. Route 66, Boonsboro, Md. Cochran, Miller, Harry, Flock, Aucts.

FRI. AUG. 14, State Graded Feeder Pig Sale at Carlisle Livestock Market, Inc., Exit 12 East off I-81, Carlisle, PA.

FRI. AUG. 14 - 7PM, Horse Sale. New Holland Sales Stables, Inc., New Holland, Pa.

SAT. AUG. 15, Arnold's 79th Hog Production Sale. Located At Lebanon Area Fairgrounds, Lebanon, Pa. Harry H. Bachman, Auct.

WED. AUG. 19 & THURS. AUG. 20 - Large Two Day Sale Of Farm Equip. Etc. Located One Mile East Of

Marion, Pa. Marion Auction Service, Owners And Managers.

FRI. AUG. 28, Lebanon County Holstein Club. Located At Lebanon Area Fairgrounds, Lebanon, Pa. Harry H. Bachman, Auct.

FRI. AUG. 28, State Graded Feeder Pig Sale at Carlisle Livestock Market, Inc., Exit 12 East off I-81, Carlisle, PA.

SEPTEMBER

FRI. SEPT. 4 - 9AM Fall Machinery Sale. Belleville Livestock Market, Rt. 655, Belleville, Pa.

WED. SEPT. 9 - 9AM, Consignment Auction. Located: Cochran Auction Complex, 7704 Mapleville Rd./Md. Route 66, Boonsboro, Md. Cochran, Miller, Harry, Flock, Aucts.

FEEDER CATTLE CONSIGNMENT SALE

Thursday, May 21, 1992
Following Weekly Sale.

JERSEY SHORE LIVESTOCK AUCTION
2 Miles South Of J.S. On Rt. 44.

Terms: Cash.
Weekly Livestock Auction Every Thursday 4:00 P.M.
814-349-8760
Or Thursday 717-398-0111

Auctioneers:
Harold Fraley and William Wolfe

PUBLIC AUCTION

1955-74 CHEVY PARTS
TOTAL LIQUIDATION!
SATURDAY, MAY 23, 1992
10 A.M.

Along Rt. 100, North Side Of Boyertown, Pa., Near The Stone Quarry In Bechtelsville. Gates Open 8 A.M. Sale Day For Inspection.

Known As BOB'S CHEVY PARTS, Everything Will Be Sold! Junk 1955-74 Chevys To Be Sold In Bunches. Over 50 Hulks To Sell, Plus A School Bus Load Of Engines, Trailer Load Of Parts, And Many Rare And Desirable Small Parts, Trim And Accessories In Bulk. Sale Is Strictly Cash Or Pre-Approved Check. Removal Mandatory By June 1, 1992. ALSO: New Beavertail Tandem Auto Trailer, Older Chevy 350 Tow Truck, Other Pickups, And Vans, 1963 Nova SS Convertible w/283 4 Spd., Sand Blaster, Big Air Compressor, 20 Ton Hyd. Press. Entry Is At Your Own Risk! This Is A Hazardous Area. No Children Admitted. Bring A Truck Instead.

David Kaplan Atty.
(215) 323-2800 Pottstown
Ted Maurer (AU-000593-L)
Successful Auction Management
Phone (215) 323-1573 In Pottstown, Pa.

ABSOLUTE FARM AUCTION

Saturday, May 23, 1992
10 a.m. - Rain or Shine

Directions: From Fredericksburg, Va. — Route 208 To Route 522 Left To Mineral Fire Dept., Left On Route 618, Go To Route 700, Take Right. Farm 1/2 Mile On Left. SIGN IN FRONT.
EQUIPMENT TERM: Cash or check with Bank Letter. Items must be paid in full Day of Auction. REAL ESTATE TERMS: 20% day of auction — Cash or Certified Check. Balance in full within 30 days.

FARM LAND
WILL BE SOLD AT 1:00 P.M.
2-Story house on 100+ acres, barn, machinery shed, 3-acre pond.
TRACTORS & MISC. EQUIPMENT: John Deere 4000, 1520, 3010, B Tractors; JD 1010 Dozer; JD Combine 3300, 2-row corn, 10-ft. grain; Ford Road Tractor tandem. EQUIPMENT: JD 4-row Corn Planter; Grain Drill; 4-Bottom Plow; 2 8-ft. Disk; 12-ft. Disk; Sprayer; Manure Spreader; Sickle Bar Mowers; Cultivator; JD Hayrake; JD Silage Wagon; Fox Blower; 7-ft. Bush Hog; JD 336 Hay Baler; Hay Wagons; JD Loader; Post Digger; Post Driver; Cement Mixer; Dump Hoist; Calf Feeders; JD Feed Mill; Manure Spreader — Liquid; PTO Gen., cyl. for equipment; Barbed Wire; Lots of small miscellaneous items.

DON'T MISS THIS ONE!!!
SHELTON'S AUCTION CO.
Gordon Shelton • Certified Va. Auctioneer
VA.A.R. 1277 • Licensed & Bonded
P.O. Box 66 • Hartwood, Va 22471 • 703/752 2720

DON'T FORGET OUR AUCTION
YARD SALE JUNE 13th

ABSOLUTE FARM AUCTION

PUBLIC AUCTION

SINKS FARMS
COMPLETE HERD DISPERSAL

Located on farm 13 miles S of Williamsport, Pa. 4 miles E of Elimsport, 4 miles W of Blinker light along Rt. 15. Watch for auction arrows. (Lyc. Co.)

TUES. EVE., MAY 19, 1992
Starting 8PM DST



66 REGISTERED HOLSTEIN DAIRY CATTLE 66
(9 red & whites)

Herd consists of 34 milking age animals, 4 just fresh, 4 dry due soon, balance bred for year round freshening. 15 big fancy bred heifers due from sale time to shortbreds. 7 breeding age, 6 yearlings, 3 heifer calves. Berlin bull calf.

March 92 RHA 37.6 cows 22,569m 3.6% 807F 3.2%P 715P
June 91 RHA 25,711M 3.3% 844F 3.1%P 807P
91 yearly herd average 24,351M 815F 777P

Number 1 herd in Lycoming Co. in 91 for milk and protein

SAMPLE OF THE KIND THAT SELLS:

TORA: Fancy Pen-Col Valiant Troy dau. made 27,500m 3.4%P as first calf from 33,300m Indian Hills Senator Flame, sells just fresh w/99 lbs. 1st test. Tora sells w/Berlin calf & Caveman Son bred heifer.

SHARON: known red carrier by Valiant Troy proj over 21,000m sells with R&W Oct. heifer & R&W Caveman Son dau. that made 15,000m 3.4P as 1st calf.

Many more of the same caliber sell.
SERVICE SIREs include Atlantic & Select Sires like Valdez, Derek, Trancer, Berlin, Noah, etc.

Certified & Accredited - 95% calffood vacc.
100% Home-raised - Health charts
Pregnancy checked - Dairy sale under tent
Catalogs at ringside

Terms: Cash or good Pa. check. Out of state buyers must have current bank letter of credit.

Owner,
MILTON FUOSS
(717) 547-1822

Conducted by
Fraley Auction Co.
Lic. #RY71L
RD#4 Muncy, PA 17756
(717) 546-6907

Conducted by
FRALEY AUCTION CO.
Licensed & Bonded
(717) 546-6907

NEW HOLLAND SALES STABLES, INC.



New Holland, Pa.

Located 12 Miles East of Lancaster, just off Rt. 23

WEDNESDAY, MAY 20, 1992
12:30 P.M.

35 HOLSTEINS

(selected from a 40 Cow Milking Herd Dispersal)

REGISTERED, CLASSIFIED, ONTARIO D.H.I. TESTED

THE HERD YOU'VE BEEN WAITING FOR!

A milky herd averaging 59 lb. per day on the April test day!

7 Very Good, 18 Good Plus, 7 Good, 2 Not Classified

10 fresh April & May, 4 due June to Aug., 15 due for fall
Vet checked at sale barn. All necessary shots.

Featuring

- A Very Good daughter of "Triple Threat" with 20908 lb. milk, 3.9% butterfat, & 3.6% protein as a 4 yr. old. She sells fresh on Apr. 27 & milking 100 lb. per day. Her Dam is (EX-2*) with 19120 lb. milk & 4.2% fat as a 6 yr. old.
- A Good Plus 5 yr. old "Bootmaker" with 18501 lb. milk, 3.6% fat, & 3.4% protein as a 3 yr. old. She sells fresh since Feb. & is from a Good Plus Dam with 20,282 lb. milk, next 2 Dams are both Very Good.
- A super uddered (GP) "Tempo" with 17,937 lb. milk, 4% fat & 3.6% protein as a 2 yr. old. She sells fresh May 10. Her Dam is (GP) with 15,950 lb. milk, 4.7% butterfat, & 3.8% protein, 2nd Dam is (VG) with 20,950 lb. milk, 3rd Dam is (VG-3*) with 22308 lb. milk.
- A Sept./86 daughter of Lonsfarm Revelation selling due in June. She has 21,656 lb. milk with 3.8% fat, & 3.4% protein as a 4 yr. old. Her dam is a Very Good "Warden" with 18841 lb. milk, 4.3% fat.
- A Good Plus June/86 daughter of Marshfield Elevation Tony sells due in July. She has 19264 lb. milk, 3.6% fat, & 3.3% protein as a 4 yr. old. Her Dam is a (GP) "Triple Threat", 2nd Dam is Very Good.
- A Good Plus Nov./85 "Sidney" with 27659 lb. milk, 3.1% fat, & 3.2% protein, sells fresh since Apr. 6. Her Dam is (GP) by Warden with 24103 lb. milk, 2nd Dam is (GP) with 23576 lb. milk.
- Another Good Plus daughter of "Revelation" milking since Oct. is projected to 20214 lb. milk as a 4 yr. old & sells due again in early Oct. Her Excellent "Senator" Dam & Very Good "Rockman" granddam both have over 16000 lb. milk.

Represented by John Wetmore 717-253-5329

Note: If you're in need of cows that will milk the best and have the potential to score high, come to New Holland Wednesday, May 20.

New Holland Sales Stables, Inc.

Barn 717-354-4341

Fax 355-0706

Norman & David Kolb, Mgrs. 61L

717-397-5538



RY-00011-L

PUBLIC AUCTION

RD #1, Box 103
Marletta, PA 17547
(717) 426-3769

Real Estate • 3 Unit Investment Property

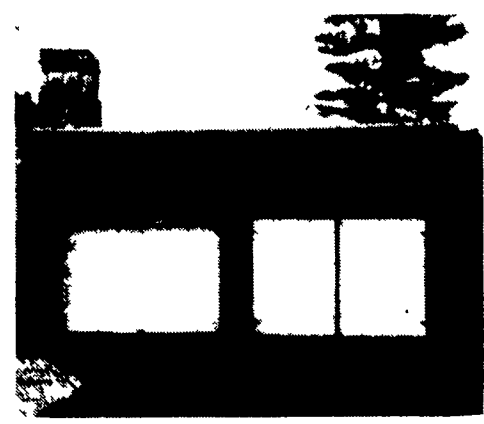
Saturday, May 30, 1992 12 Noon

119 & 121 West Market Street, Marletta, Pa.

From Rt. 30 Columbia Exit. Go North On Rt. 441, Go Past 2nd Red Light, At Intersection Of 441 & 772 Turn Left Onto Waterford Ave., Go To Stop Sign, Keep Right Onto W. Market St. (Property On Left) LOOK FOR SIGN (Down Town)

TERMS: 10% DOWN DAY OF SALE (BALANCE DUE ON OR BEFORE JULY 28, 1992)

LOT SIZE (34'6" x 206')



Open House May 2 and 9 (10 A.M. to 1 P.M.)

Selling For:
Richard & Tracy Baggett