

Westminster Livestock
Hagerstown, Md.
May 12, 1992

Report supplied by auction
SLAUGHTER COWS: 72 HEAD, ACTIVE 1.00 HIGHER. UTILITY 49.00-52.50; HIGH DRESSING 53.00-55.00; CANNERS 45.00-48.50; SHELLY 45.00 DOWN.
BULLS: YG#1 1400-1850 LBS. 61.00-62.00; YG#2 55.00-59.00.
FED STEERS: 45 HEAD. HIGH CHOICE TO PRIME 1200-1400 LBS. 73.00-76.00; HIGH CHOICE 1400-1600 LBS. 67.00-69.00; LOW CHOICE 64.00-67.00; LOW CHOICE 1050-1400 LBS. 68.00-72.50.
FED HEIFERS: 15 HEAD. CHOICE #3&4 900-1100 LBS. 65.00-68.00; 1 CHOICE HOLSTEIN 1200 LBS. 64.75.
VEAL CALVES: CHOICE 180-300 LBS. 95.00-103.00; GOOD 75.00-90.00; CULLS 80-110 LBS. 80.00-87.00; 50-80 LBS. 65.00-80.00; WEAK/ROUGH 60.00 DOWN.
FARM CALVES: HOLSTEIN BULLS #1 90-120 LBS. 145.00-160.00; #2 80-110 LBS. 110.00-140.00; HOLSTEIN HEIFERS FEW TO 157.00; BEEF X BULLS 110.00-150.00; HEIFERS TO 145.00.
BUTCHER HOGS: 60 HEAD. US#1&3 215-260 LBS. 43.00-44.00; 280 LBS. TO 39.50; 190-210 LBS. 38.00-41.50; 300-350 LBS. 32.00-36.50.
SOWS: 30 HEAD, 2.00 HIGHER. 300-500 LBS. 33.00-37.25; 500-700 LBS. 34.00-39.00.
BOARS: 28.00-29.75.
STOCK CATTLE: 100 HEAD, GOOD EMAND. STEERS 300-500 LBS. 80.00-94.00; 500-700 LBS. 72.00-88.00; 700-800 LBS. FEW TO 71.00; 850-1000 LBS. 65.00-72.00.
HEIFERS: 300-500 LBS. 70.00-80.00; 500-700 LBS. 65.00-76.00; 700-900 LBS. 55.00-65.00.
BULLS: 200-400 LBS. 85.00-100.00; 400-600 LBS. 75.00-90.00; 600-800 LBS. 64.00-71.00.
LEAMBS: HIGH CHOICE TO PRIME 90-110 LBS. 78.00-83.00; FEW 110-135 LBS. 70.00-75.00; 70-90 LBS. 75.00-85.00; 50-70 LBS. 80.00-95.00; 30-50 LBS. 82.00-92.00; 1 15 LB. AT 115.00.
SHEEP: 17.00-27.00; YEARLINGS 30.00-40.00.

GOATS: LARGE BILLIES 80.00-90.00; **LARGE NANNIES** 50.00-65.00; **MEDIUM** 35.00-55.00; **SMALL** 15.00-32.00.
PIGS AND SHOATS: 218 HEAD. BY THE HEAD, 15-25 LBS. 15.00-25.00; 30-50 LBS. 18.00-31.00; 50-60 LBS. 30.00-35.00; BY THE POUND, PRICES HIGHER. 100-120 LBS. 40.00-45.00; 130-150 LBS. 39.00-45.00; 150-180 LBS. 35.00-41.00.
STOCK BOARS: 200-275 LBS. 35.00-39.00.

Central U.S. Carlot

Pork Report
May 13, 1992
Report supplied by USDA
CENTRAL U.S. CARLOT PORK REPORT FOB OMAHA BASIS INCLUDES MAJOR PRODUCTION AREAS IN MIDWEST AS OF 3 P.M. COMPARED TUESDAY'S 3:00 P.M. CLOSE: FRESH PORK LOINS mostly 2.00 HIGHER; BUTTS GENERALLY 2.00 HIGHER; SKND. HAMS 17-20 LBS. STEADY TO 1.50 LOWER, 20-26 LBS. STEADY; SDLS. BELLIES 1.50 LOWER. TRADING MOSTLY MODERATE, WITH LIGHT TO MODERATE DEMAND AND OFFERINGS.
NOTE: 1 LD. FRESH 14-18 LB. LOINS AT 115.00, 1/4" TRIM AT 131.00 FOR IMMEDIATE SHIP.
65.5 LOADS PORK CUTS
37.5 LOADS TRIM/PROCESS PORK CUTS
LOINS, REG., FRESH
14-18 LBS., * 16.5 LOADS, RANGE 108.00-113.00, WGHTD. AVG. 109.55.
1/4" TRIM 14-18 LBS., 16.5 LOADS, RANGE 128.00-132.00, WGHTD. AVG. 129.58.
18-22 LBS., * RANGE 110.00, WGHTD. AVG. 110.00 D.
1/4" TRIM 18-22 LBS., RANGE 128.00, WGHTD. AVG. 128.00 D.
COMBOS 22 LBS. AND UP, RANGE 80.00, WGHTD. AVG. 80.00 D.
LOIN, BLS CTRCT 5-7 LBS. RANGE 233.00-249.00, WGHTD. AVG. 240.86 A.
PICNIC, FRESH (COMBOS) FOR SMOKER TRIM, RS RANGE 49.00, WGHTD. AVG. 49.00 A.

BOSTON BUTT
4-8 LBS., * 3.0 LOADS, RANGE 81.00-83.00, WGHTD. AVG. 82.00.
1/4" TRIM 4-8 LBS., 3.0 LOADS, RANGE 101.00-102.00, WGHTD. AVG. 101.50.
COMBOS, RANGE 60.00, WGHTD. AVG. 60.00 E.
SPARERIBS, FRESH
1.5-3.5 LBS., 1.0 LOADS, RANGE 125.00, WGHTD. AVG. 125.00.
3.5-5.5 LBS., 1.0 LOADS, RANGE 108.00, WGHTD. AVG. 108.00.
SPARERIBS, FROZEN
3.5-5.5 LBS., RANGE 105.00, WGHTD. AVG. 105.00 D.
3.5-5.5 LBS., RANGE 87.00, WGHTD. AVG. 87.00 E.
LOIN BACKRIB (BOXED) FRSH/FRZN
1.5 AND DOWN LBS., RANGE 230.00, WGHTD. AVG. 230.00 A.
1.75/DN#, RANGE 225.00, WGHTD. AVG. 225.00 A.
LOIN BACKRIB (COMBOS) FRSH/FRZN
1.75/DN LBS. 1.0 LOADS, RANGE 219.00, WGHTD. AVG. 219.00.
HAM, SKINNED, SELECTED FRESH 17-20 LBS., 11.0 LOADS, RANGE 61.00-62.50, WGHTD. AVG. 61.73.
FRESH 20-26 LBS., 14.0 LOADS, RANGE 61.00-64.00, WGHTD. AVG. 62.14.
HAM, SKINNED, COMMODITY FRESH 17-20 LBS., RANGE 60.00, WGHTD. AVG. 60.00 A.
FRESH 20-26 LBS., 3.0 LOADS, RANGE 60.00-62.00, WGHTD. AVG. 61.33.
FRESH 26-32 LBS., RANGE 61.00, WGHTD. AVG. 61.00 D.
FRESH 32 LBS. AND UP, RANGE 59.00-61.00, WGHTD. AVG. 59.93 A.
BELLY, SDLS, SKIN-ON, FRESH
FRESH 10-12 LBS., 1.5 LOADS, RANGE 30.00-32.00, WGHTD. AVG. 30.67.
FRESH 12-14 LBS., 10.5 LOADS, RANGE 31.50-33.50, WGHTD. AVG. 31.60.
FRESH 14-16 LBS., 2.5 LOADS, RANGE 31.50-33.50, WGHTD. AVG. 31.90.
FRESH 16-18 LBS., 0.5 LOADS, RANGE 33.00, WGHTD. AVG. 33.00.

FRESH 18-20 LBS., RANGE 33.00, WGHTD. AVG. 33.00 C.
FRESH 20-25 LBS., RANGE 31.00, WGHTD. AVG. 31.00 C.
PORK TRIMMINGS/ BONELESS PROCESSING PORK (CHEMICAL LEAN)
COMBO 42% FRESH, 9.5 LOADS, RANGE 26.00-30.00, WGHTD. AVG. 28.63.
COMBO 72% FRESH, 5.0 LOADS, RANGE 55.00-56.00, WGHTD. AVG. 55.40.
BOXEC 72% FROZEN, 1.0 LOADS, RANGE 55.00, WGHTD. AVG. 55.00.
BONELESS PICNIC MEAT COMBO 72% FRESH, 20.0 LOADS, RANGE 57.00, WGHTD. AVG. 57.00.
SKINNED JOWLS COMBO FRESH, 2.0 LOADS, RANGE 27.00, WGHTD. AVG. 27.00.
BOXED FROZEN, UNQUOTED.
NOTE: (*) REFLECTS 1/4" TRIMMED PRODUCT BROUGHT BACK TO A REGULAR COMMODITY BASIS.
ABCDE AFTER QUOTES REPRESENTS DAYS SINCE LAST ACTUAL MARKET TEST. QUOTES ARE DROPPED AFTER 5 DAYS OF NO TEST OR BEFORE IF THEY NO LONGER REFLECT CURRENT MARKET CONDITIONS.
PORK CARCASS CUTOUT WED., MAY 13
ESTIMATED GROSS CUTOUT VALUES OF A 175 LB. HOG CARCASS BASED ON USDA CUTTING YIELD TESTS AND CARLOT PRICES. WEDNESDAY'S CARCASS GRADES & PRICES PER CWT.:
US #1 65.00, CHANGE FROM TUES.'S VALUE 0.21; US#2 62.79, CHANGE FROM TUE. VALUE 0.21; US#3 60.58, CHANGE FROM TUE. 0.21; US#4 58.38, CHANGE FROM TUE. 0.22.
TODAY'S CALCULATIONS FOR US #2 175 LB. PORK CARCASS:
HAM, SKINNED, 14-20 LBS., 21.01% OF CARCASS, 61.75 FOB VALUE, CHANGE FROM TUES. -0.50; LOINS, 1/4" TRIM, 14-22 LBS., 20.33% OF CARCASS, 130.50 FOB VALUE.
BELLIES, SDLS, 12-14 LBS., 13.90% OF CARCASS, 35.00 FOB VALUE; SPARERIBS, 3.5DN LBS., 3.03% OF CARCASS, 125.00 FOB VALUE, CHANGE FROM TUES. 3.00.
PICNICS, 8-12 LBS., 10.31% OF CARCASS, 38.75 FOB VALUE, CHANGE FROM TUES. 1.25; BUTTS, 1/4" TRIM, 4-8 LBS., 7.25% OF CARCASS, 98.00 FOB VALUE.
JOWL, 2.85% OF CARCASS, 27.00 FOB VALUE, CHANGE FROM TUES. 3.00; NECKBONES, 1.52% OF CARCASS, 10.00 FOB VALUE.
FEET, 1.05% OF CARCASS, 12.00 FOB VALUE; TAILS, 0.22% OF CARCASS, FOB VALUE 12.00.
TRIM 72%, 2.19% OF CARCASS, 55.50 FOB VALUE, CHANGE FROM TUES. 0.50; LARD 10.85% OF CARCASS, 11.50 FOB VALUE.
TOTAL CARCASS 94.51%. US#2 CARCASS VALUE PER CWT. 62.79.
NOTE: VALUE MAY CHANGE WITHOUT ADEQUATE TEST.

Eighty-Four Livestock

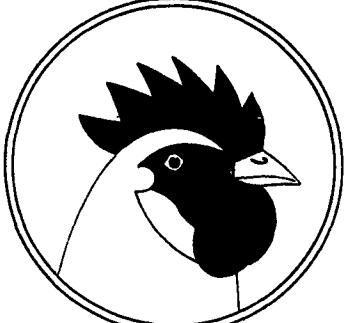
Eighty-Four, Pa.
Monday, May 11, 1992
Report Supplied by Auction
CATTLE 236. STEERS, HIGH CHOICE AND PRIME 72.00-74.75; SELECT 68.00-71.50; STANDARD 57.50-65.00; UTILITY 55.00 AND DOWN.
HEIFERS: SELECT 60.00-68.00, STANDARD 53.00-59.00; UTILITY 52.00 AND DOWN.
COWS: UTILITY AND COMMERCIAL 52.00-57.50; CUTTER AND BONE 47.00-51.50; CANNER AND LOW CUTTER 40.00-46.50; SHELLS 39.50 AND DOWN.
BULLS: YG#1 60.00-66.00; #2 55.00-59.00.
FEEDER STEERS: 200-300 LBS. 80.00-120.00; 300-500 LBS. 80.00-98.00; 500-700 LBS. 60.00-85.00.
HEIFERS: 200-300 LBS. 75.00-95.00; 300-500 LBS. 70.00-91.00; 500-700 LBS. 60.00-84.50.
BULLS: 200-300 LBS. 70.00-90.00; 300-500 LBS. 65.00-88.00; 500-700 LBS. 56.00-80.50.
CALVES: 174 HEAD. VEAL CALVES CHOICE 100.00-125.00; GOOD 80.00-98.00; STANDARD AND GOOD 75.00-95.00; UTILITIES 70.00 AND DOWN.
FARM CALVES: HOLSTEIN BULLS #1 140.00-182.50; HOLSTEIN HEIFERS 140.00-182.50; HOLSTEIN BULLS #2 100.00-150.00; BEEF BULLS 70.00-155.00; BEEF HEIFERS 85.00-145.00.
HOGS: 122 HEAD. #1&2 220-250 LBS. 42.00-43.50; #1&3 260-280 LBS. 31.00-41.75; #2&3 285-310 LBS. 37.00-40.50.
SOWS: UNDER 500 LBS. 36.00 AND DOWN; OVER 500 LBS. 35.00 AND DOWN.
BOARS: 28.00-31.75.
FEEDER PIGS: #1&3 20.00 AND DOWN; #1&3 30.00-40.00, 20.00-28.00; 45-55 LBS. 25.00-35.00.
LAMBS: 212 HEAD. HIGH CHOICE AND PRIME 50-75 LBS. 70.00-84.50; 80-100 LBS. 79.50-81.00; GOOD 50-75 LBS. 79.50-81.00; 80-100 LBS. 59.00-65.00; 80-100 LBS. 50.00-58.00.
FEEDER LAMBS: GOOD 49.00-60.00; EWES 14.00-27.00.
GOATS: LARGE 35.00-63.00, MEDIUM 25.00-30.00, SMALL 10.00-20.00, ALL PER HEAD.

New Holland Horses

New Holland Sales Stables
New Holland, PA
Monday, May 11, 1992
REPORT SUPPLIED BY AUCTION
285 HEAD. MARKET STRONGER. RIDING HORSES 485.00-925.00. DRIVING HORSES 565.00-975.00. BETTER RIDING HORSES 1025.00-1550.00.
REGISTERED HORSES 880.00-1525.00.
HORSE COLTS 210.00-415.00. MARE PONIES 75.00-275.00. PONY COLTS 50.00-135.00. GELDINGS 75.00-275.00. LARGER PONIES 355.00-415.00. WORK HORSES 790.00-1125.00. KILLERS: LIGHTWEIGHT 525.00-675.00. HEAVYWEIGHT KILLERS 750.00-975.00, FEW 1010.00-1100.00. THIN 315.00-450.00.

Risser's Poultry Inc.

P.O. BOX 52 • LITITZ, PA 17543



Over 60 years of prompt dependable service.

Buyers and Haulers of Leghorn, Medium, and Heavy Fowl.

Now using carts for the most efficient means of moving spent fowl.

Tel. 717-626-5466

FAX 717-627-3599

HELP FOR A BUDGET HEADACHE

WANT ADS

BOYDELL FARMS

302 Iona Rd., Lebanon, PA 17042
Phone: 717-272-8943

DISTRIBUTORS FOR:
NEW \$69.00
2516-2339 Unit



ALFALFA
84 VWAP - Vernal
Wetfoot - Erie

TIMOTHY, TORO, CLAY
AND OTHERS

FOR EARLY DISCOUNT ON VARIOUS ITEMS, PLEASE CALL
WHOLESALE & RETAIL

FERTILIZER

10-20-20 \$176 Per Ton Bulk
Triple 10-10-10 \$130 Per Ton Bulk

BALER TWINE 7200'-9000'-10,000'
Plus Plastic Twines

SOYBEANS

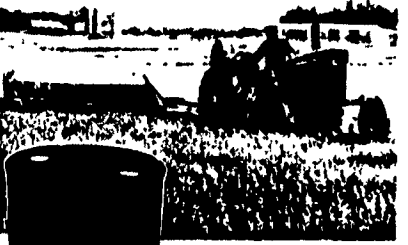
Agri 8836
3790 Pella NC-Shore
Experiment 354

CHEMICALS

EXTRAZINE - ATRAZINE - ECT
BANVEL ROUNDUP
BEEF ASS

SWATHER'S CHOICE

ALFALFA HAY CONDITIONER



LIQUID CHEMICAL HAY CONDITIONER FOR DRYING ALFALFA HAY IN 1/3 LESS TIME

Alfalfa and other legume crops have a coating of wax. While this coating is a natural protection for the growing plant, it is an inhibitor to moisture loss in field curing and to feed utilization in the digestive system of ruminant animals. The presence of this coating of wax also makes the hay stem brittle and less palatable to livestock.

Swather's Choice "washes off" the outside waxy coating of alfalfa, allowing for the water inside the plant to evaporate more rapidly than in untreated hay. Swather's Choice is actually a soap that is safe for livestock consumption and won't affect palatability.

In studies at Michigan State University, hay treated with the ingredients in Swather's Choice had higher protein and lower fiber. In a further study at Utah State University, cows consumed 2.2 pounds more treated hay per day.

Unlike conventional granular drying agents, Swather's Choice is a liquid chemical hay conditioner. It is easily tank mixed with water and requires only fifteen gallons per acre in most applications, compared with the conventional products that are normally applied at 30 gallons per acre.

AVAILABLE FROM: DAVID O BINK (215) 767-1408