

Greencastle Livestock

Greencastle, Pa.
Monday, May 11, 1992

SLAUGHTER CATTLE RECEIPTS: 625 HD. SLAUGHTER STEERS: 257 HD. TREND: STEADY. HIGH CHOICE AND PRIME 2-4 75.00-78.00; CHOICE 2-3 95.00-107.50; CHOICE 2-3 107.50-137.50; CHOICE 2-3 OVER 137.50; CHOICE 2-3 95.00-107.50; CHOICE 2-3 107.50-137.50; CHOICE 2-3 OVER 137.50; CHOICE 2-3 95.00-107.50; CHOICE 2-3 107.50-137.50; CHOICE 2-3 OVER 137.50; CHOICE 2-3 95.00-107.50; CHOICE 2-3 107.50-137.50; CHOICE 2-3 OVER 137.50.

HOLSTEINS: CHOICE 2-3 1050-1450 LBS. 62.75-68.75; SELECT 1-2 1050-1450 LBS. 57.00-62.00.

SLAUGHTER HEIFERS: 80 HD. TREND: STEADY. CHOICE 2-3 85.00-100.00; CHOICE 2-3 1000-1250 LBS. 66.00-74.75; CHOICE 4 ALL WEIGHTS 61.00-67.00; SELECT & CHOICE 1-2 850-1000 LBS. 60.00-66.00; SELECT & CHOICE 1-2 1000-1250 LBS. 64.50-71.75.

HOLSTEINS: CHOICE 2-3 1000-1350 LBS. 60.00-66.75; SELECT & CHOICE 1-2 1000-1350 LBS. 55.00-59.00.

SLAUGHTER BULLS: 35 HD. TREND: STEADY. YIELD GRADE 1 ALL WEIGHTS 64.00-74.00; YIELD GRADE 2 ALL WEIGHTS 56.00-63.00. BULLOCKS: 140 HEAD. CHOICE 1-3 950-1150 LBS. 58.00-63.75; CHOICE 1-3 1150-1375 LBS. 62.00-67.00; SELECT 1-2 950-1250 LBS. 66.00-74.00.

COWS: 239 HD. TREND: STEADY. BREAKING UTILITY & COMMERCIAL 48.00-52.75; CUTTER & BONING UTILITY 47.00-54.00; CANNER & LOW CUTTER 46.75 & DOWN.

STOCKER & FEEDER CATTLE RECEIPTS: 96 HD. TREND: STEADY. BEEF TYPES: 200-400 LBS. STEERS 80.00-118.00, BULLS 80.00-114.00, HEIFERS 70.00-84.50; 400-600 LBS. STEERS 74.00-91.00, BULLS 65.00-80.00, HEIFERS 65.00-75.00; 600-800 LBS. STEERS 70.00-81.00, BULLS 60.00-70.00, HEIFERS 64.00-69.00; 800-975 LBS. STEERS 64.00-70.00, BULLS 54.00-64.00, HEIFERS 60.00-65.00.

HOLSTEINS & DAIRY CROSS: 200-400 LBS. STEERS 70.00-87.00.

BULLS 65.00-76.00, HEIFERS 85.00-125.00; 400-600 LBS. STEERS 65.00-74.00, BULLS 60.00-65.00, HEIFERS 70.00-81.00; 600-800 LBS. STEERS 57.00-64.00, BULLS 50.00-57.00, HEIFERS 64.00-74.00; 800-975 LBS. STEERS 52.00-59.50, BULLS 45.00-54.50, HEIFERS 55.00-63.00.

CALVES: 475. VEAL CALVES. TREND: STEADY. CHOICE 150-300 LBS. 85.00-114.00; GOOD 150-300 LBS. 80.00-85.00; GOOD 100-150 LBS. 80.00-87.00; GOOD 80-100 LBS. 80.00-85.00; STANDARD 80-100 LBS. 74.00-79.00; STANDARD 80 LBS. & DOWN 73.00 & DOWN.

CALVES RETURNING TO THE FARM: TREND: STEADY. HOLSTEIN BULLS OVER 100 LBS. UP TO 170.00; UNDER 100 LBS. UP TO 165.00; HOLSTEIN HEIFERS OVER 100 LBS. UP TO 185.00; UNDER 100 LBS. UP TO 180.00; BEEF TYPE BULLS OVER 90 LBS. UP TO 200.00; BEEF TYPE HEIFERS OVER 90 LBS. UP TO 160.00.

SHEEP & LAMBS: 120 HD. LAMBS: TREND: STEADY TO 5.00 LOWER. CHOICE 80-100 LBS. 67.00-75.00; 100-120 LBS. 65.00-72.00; 120 AND OVER 50.00-58.00; MEDIUM & GOOD ALL WEIGHTS 59.00-71.00; LIGHT LAMBS 75.00-88.00.

SHEEP: EWES LEAN 15.00-22.00; EWES FAT 16.00-21.00; YEARLINGS 30.00-39.00; BUCKS 14.00-20.00.

GOATS: 101 HD. SMALL 15.00-29.00; MEDIUM 25.00-45.00; LARGE 45.00-85.00.

HOGS, SOWS & BOARS: 131 HD. STEADY. HOGS, BARROWS & GILTS: 210-250 LBS. 43.00-44.00; 250-260 LBS. 42.00-43.00; 260-270 LBS. 40.00-41.00; 270-300 LBS. 36.00-38.00.

LIGHT HOGS: 140-180 LBS. 31.00-34.00; 180-210 LBS. 34.00-39.00. SOWS: TREND: 2.00 HIGHER. GOOD SOWS UNDER 400 LBS. 33.50-37.00; GOOD SOWS OVER 400 LBS. 35.00-38.50; CULL SOWS ALL WEIGHTS 29.00 & DOWN.

BOARS: TREND: 1.00 HIGHER. 180-210 LBS. 30.00-34.00; 210-260 LBS. 34.00-36.00; 260-300 LBS. 30.00-31.00; 300 LBS. & OVER 26.00-29.00.

SALE EVERY MONDAY AT 2:00 P.M. & EVERY THURSDAY AT 1:00 P.M.

HAY & STRAW SALE EVERY MONDAY & THURSDAY AT 11:30 A.M.

SPECIAL FEEDER CATTLE SALE: FRIDAY, JUNE 5, 1992 AT 7:15 P.M.
SPECIAL PEBBLED PIG SALE: SATURDAY, MAY 23, 1992 AT 1:00 P.M.

Oklahoma City Feeder Cattle

Oklahoma City, Okla.
Wednesday, May 13, 1992

****Attention Dodge City** OKLAHOMA NATIONAL STOCKYARDS WEEKLY CATTLE SUMMARY:** Compared with last week: Feeder steers and heifers over 600 lbs. \$.50-\$1.50 higher. Steers under 600 lbs. near steady but lightly tested. Heifers under 600 lbs. \$1.00- \$3.00 lower. Yearling demand good. Calf demand fair. Demand levels held constant throughout two day session. Quality of supply average to attractive, however sizeable end plain. Weigh-ups average. Feeder cattle in slightly thin through moderately fleshy condition (excellent condition for May feeders). Graze-out wheat is playing out in this area but some cattle continue to be held rather than marketed at this time. Slaughter cows steady. Slaughter bulls \$1.00-\$1.50 lower. Slaughter cattle demand moderate. Good demand for stocker cows and pairs. Receipts this week 14,975; last week 15,215; last year 11,567. Supply consisted of 88% yearlings over 600 lbs.; 8% calves; 4% cows and bulls. Bulk prices follow; weighted average prices in parenthesis:

Feeder steers: Medium and Large Frame 1, few 300-400 lbs. \$108.50-\$113.50; few 400-500 lbs. \$91.50-\$101.00; 500-550 lbs. \$91.25-\$98.25 (\$94.24); 550-600 lbs.

\$85.50-\$93.00 (\$88.96); 600-650 lbs. \$85.00-\$89.50 (\$86.86); 650-700 lbs. \$82.75-\$86.00 (\$84.95); 700-800 lbs. \$77.00-\$82.00 (\$79.86); 800-850 lbs. \$75.25-\$78.25 (\$76.92); 850-900 lbs. \$73.50-\$77.00 (\$75.88); 900-1000 lbs. \$72.00-\$75.00, fleshy \$70.25-\$72.75 (\$72.97); few 1000-1050 lbs. \$70.25-\$73.50. Large Frame 2 Holsteins, 575-600 lbs. \$74.00-\$74.50 (\$74.11); 650-725 lbs. \$70.25-\$72.50 (\$71.45); 750-800 lbs. \$65.50-\$68.00 (\$66.99); 800-900 lbs. \$63.75-\$65.75 (\$64.91); load 920 lb. \$63.85.

Feeder Heifers: Medium and Large Frame 1, 350-400 lbs. \$85.00-\$91.00 (\$87.97); 400-500 lbs. \$83.75-\$89.50 (\$85.93); 500-600 lbs. \$79.00-\$85.00 (\$82.47); 600-650 lbs. \$77.25-\$83.25 (\$79.42); 650-700 lbs. \$75.00-\$79.00 (\$76.92); 700-800 lbs. \$73.50-\$77.00 (\$74.87), replacements \$77.00-\$79.00; 800-850 lbs. \$72.25-\$74.50 (\$73.74).

Slaughter Cows: Cutter, Boning and Breaking Utility Y.G. 1-4 average dressing \$47.00-\$50.00, high dressing \$50.50-\$53.50; low dressing \$43.50-\$47.00.

Slaughter Bulls: Y.G. 1 1200-2300 lbs. average dressing \$58.75-\$61.25; high dressing \$62.75-\$63.00. Y.G. 1-2 1000-1550 lbs. low dressing thin or fleshy \$54.00-\$58.00.

Pairs: Mostly average to high quality ranch cows of English and Brahma cross breeding, many with larger calves bred back to Limousin bulls. 3-5 yr old 825-925 lb. cows with 100-350 lb. calves \$900.00-\$975.00 5-10 yr old 850-1150 lb. cows with 250-375 lb. calves \$850.00-\$910.00; with 100-250 lb. calves \$685.00-\$785.00.

Morrison Cove Livestock

Martinsburg, Pa.
May 11, 1992

Report supplied by auction
CATTLE 193. STEERS CHOICE 73.00-76.10; **GOOD** 69.00-72.75. **HEIFERS: CHOICE** 72.00-75.10; **GOOD** 67.00-71.50. **COWS: UTILITY & COMMERCIAL** 45.00-53.00; **CANNER & LOW CUTTER** 36.00-51.50. **BULLOCKS: GOOD & CHOICE** 63.00-70.00. **BULLS: YIELD GRADE NO. 1** 55.00-64.00. **FEEDER CATTLE: STEERS** 65.00-83.00; **BULLS** 57.00-71.50; **HEIFERS** 53.00-76.00.

CALVES 276. PRIME NO MARKET TEST; CHOICE 96.00-101.00; **GOOD** 87.00-95.00; **STANDARD** 55.00-82.00; **HOLSTEIN BULLS** 90-130 LBS. 140.00-171.00; **HOLSTEIN HEIFERS** 90-130 LBS. 130.00-170.00. **HOGS: 94. US NO. 1-2** 43.50-44.75; **US NO. 1-3** 42.50-43.25. **SOWS: US NO. 1-3** 30.00-39.00. **BOARS** 27.00-33.00. **FEEDER PIGS** 35. **US NO. 1-3** 20-50 LBS. 15.00-29.00. **SHEEP 31. SPRING LAMBS** 75.00-95.00; **GOOD** 55.00-70.00; **SLAUGHTER EWES** 18.00-26.00. **GOATS: 15.00-60.00.**

34 LOADS OF HAY. ALFALFA 117.50-167.50; **TIMOTHY** 64.00-99.00; **7 LOADS OF STRAW** 85.00-99.00; **EAR CORN** 88.00.

PARADISE CONCRETE METERED DELIVERY!

You can't over or under order! Guaranteed Savings! Variable Pricing!

DEFINITELY CALL US BEFORE YOU BUY!

Delivery When You Need It! Large And Small Trucks



717-687-0990

Dedicated To The Farm Community

Mitch White
Eric R. Probat

SHEARSON LEHMAN BROTHERS

FORNEY LONGENECKER
SECOND VICE PRESIDENT /
FINANCIAL CONSULTANT
COMMODITIES

29 E. KING STREET
SUITE 200
LANCASTER, PA 17602

717 295 8914 800 342 7033 PA
800 441 1997 US

PUREBRED HEIFER SALE

Sat., June 6
10:00 A.M.

HORSE SALE
June 19, 1992
7:00 P.M.

NEW HOLLAND SALES STABLES INC. THE ACTION AUCTION

LIVESTOCK IS OUR ONLY BUSINESS

Reg. Herd Dispersal
Represented by John Wetmore
7 VG and 18 GP (See Page B44)

35 Cows for Dennis Martin,
Ontario

Load Bradford County Cows

Load Wisconsin Cows

Sell Wed., May 20 Dairy Sale
See Page B46 for details.

MONDAY

SLAUGHTER HOGS



EARLY BIRD HOG SALE
8:00 A.M.

Sell Your Hogs At New Holland Sales Stables, Inc.
See them weighed, sold and pickup your check.

10:00 A.M.



HORSES
MULES



1:30 P.M.

BEEF SALE
SHEEP
GOATS
CALVES



WEDNESDAY

HEIFER SALE

11:00 A.M.

COW SALE 12:00 NOON

HEIFERS
BULLS



DAIRY
COWS

We have the usual run of 50 to 100 Heifers, all ages.
Loads of fresh cows and springers from our regular shippers.
Also some local fresh cows and springers.

1:30 P.M.

FEEDER PIG SALE



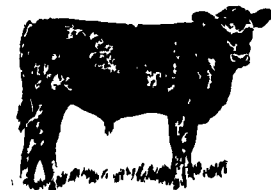
Pigs are accepted after 6:30 A.M. State graded from 8 to 12.
Dairy Barn and Feeder Pig Barn are cleaned and disinfected weekly for your protection.

THURSDAY

Beef Auction

10:00 A.M.

BULLS
STEERS
BEEF COWS



1:00 P.M.
STOCKERS
&
FEEDERS

12:00 NOON



SHEEP
GOATS
CALVES



NEW HOLLAND SALES STABLES, INC.

12 Miles East of Lancaster Off Route 23, New Holland, Penna.

MANAGERS

Norman & David Kolb - 717-397-5538

Field Representatives

Luke Eberly - 215-267-6608 738-1865

Homer Eberly - 215-267-3047

Ron Ranck - 717-656-9849

Sale Barn Office Manager
Roger Floyd - 717-354-4341
FAX # 717-355-0706

Order Buyer
Paul Good - 215-445-6662