

Farm Forum

(Continued from Page A10)

agriculturalists so they don't know the whole story. I could hope they might expand their research. For example, Jerseys are now the fastest growing breed. Surely, they deserve to be a feature on the cer-

amics, too.

If another year you would want to consider using prizes which feature the other dairy breeds, I can give you the name of a Jersey breeder/crafter. I've seen her plaques, lapel pins, and pencil

sketches. You may want to make an inquiry. Her name is:

Doris Hough
Milk n Honey Jersey Farm
1782 Cherry Hill Road
Peach Bottom, PA 17563-9672
(717) 548-3162

Our family enjoys *Lancaster Farming* and I usually pass along Section B to a person who likes to try the recipes. I would hope the Recipe Contest could in the future broaden the recognition that milk is produced by more than one

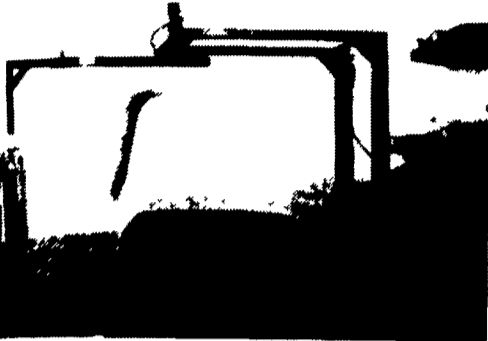
breed of cow. (The Supreme Champion at the PA Farm Show 1991, 1992 was a Guernsey.)

Editor's Note: We know the cows of color are important to many of our readers. That's why at least two of the prizes are cows of color. Unfortunately, our black and white photo makes

everything look "generic." But now that you know, we hope you will reconsider an entry in the contest so you have a chance to win a colorful prize. And if you should be unfortunate enough to win one of the uncolorful items, give it to one of your color blind neighbors who milks Holsteins.

Farm Lund, Inc. Round Bale Wrapper and Mover

"Two machines in one" This three point hitch, hydraulic bale wrapper not only wraps bales fast but can be used to move the bales to the barn or feed lot. A one man operation at its' best for feeding high quality balage.



A.L. HERR & BRO., INC.
310 Park Ave., Quarryville, PA 17566
(717) 786-3521

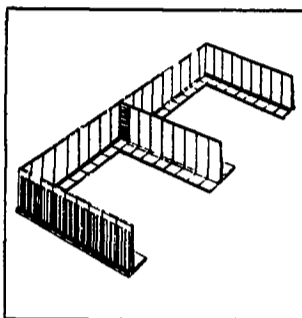
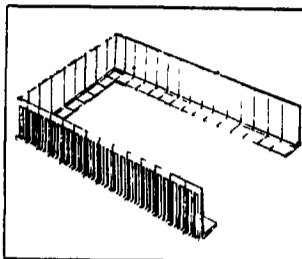
World Championship
RODEO
Rain or Shine
MEMORIAL DAY
MON., MAY 25th
2 PM & 7 PM
BUCK MOTOR SPORTS PARK
BUFFALO BILL IS BACK!

★ BUCKING HORSES ★ BRAHMA BULLS
★ COWBOYS ★ CLOWNS

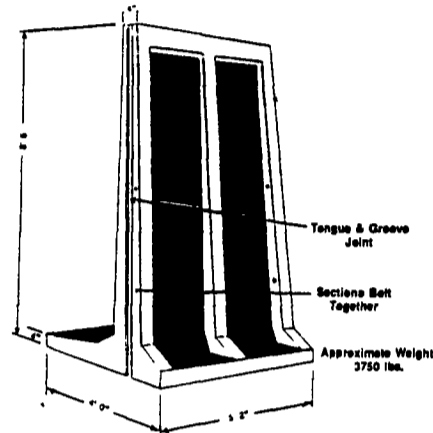
Save \$1.00 on Advance Tickets Bought by 5/24 at:
• Leather Attic, Ltd., Park City • Maplehofe Farm Dairy, Quarryville
• Cape Horn Corner, Red Lion • Deerskin Leather, Intercourse
LIVESTOCK CONTRACTOR - DAVID MARTIN

For More Info Call (717) 334-7724

The Sollenberger UPRIGHT BUNKER SILO



- Fast installation
- Low Cost
- Durable
- Moveable
- Attractive
- Quality Storage for corn silage haylage and high moisture ground ear corn
- Other uses - Storage for bulk materials retaining walls and manure pits



ROHRER'S

THE COMPLETE SEED STORE
Farm--Garden--Flower--Lawn Grass Seeds

CROP PROTECTANT PRODUCTS

Agrox D-L Plus.....1.8 oz. Pk.	\$2.65
Benlate 50 DF.....2 Lb. Bag	\$37.50
Captan 50W.....5 Lb.	\$17.50
Dacthal 75W.....4 Lb.	\$27.80
Diquat.....1 Gal.	\$85.50
Dormant Oil.....5 Gal.	\$27.50
Devrinol 50W.....4 Lb.	\$34.00
Frost Guard.....1 Gal.	\$24.50
Guthion 35W.....3 1/2 Lb.	\$22.75
Lannate.....8 Oz.	\$10.25
Lorsban 50.....5 Lb.	\$34.75
Malathion 25W.....5 Lb.	\$11.75
Marlate 50W.....4 Lb.	\$18.00
Plyac Spread/Sticker...1 Gal.	\$28.50
Ridomil 2E.....1 Qt.	\$44.50
Streptomycin 17.....8 Oz.	\$7.25
Foam Gard.....1 Qt.	\$9.95
AV-70 Plus Algaecide.....Gal	\$18.50
Carbamate 76.....5 Lb.	\$22.50
Imidan 50W.....5 Lb.	\$29.75
Isotox Seed	
Treater (F).....1 Lb.	\$9.50
Karmex DF.....4 Lb.	\$23.00
Manzate 200 DF.....6 Lb.	\$19.80
Orthene Ornamental 1 Lb.	\$13.49
Orthene Tobacco...1 Lb.	\$11.25
Charge Starter Solution	
(8-32-5).....5 Gal.	\$14.50/Gal.
Pramitol.....1 Gal.	\$23.50
Pyrenone Crop Spray Qt.	\$64.50
Roundup.....Qt.	\$47.50
Roundup.....1 Gal.	\$95.00
Roundup..2 1/2 Gal. Jug	\$123.75
Sevin 50W.....5 Lb.	\$17.50
Dipel.....Qt.	\$9.75
Weeder 64.....1 Gal.	\$15.20

ROHRER'S FANCY LAWN GRASS FOR A GREENER, FINER LAWN



ECONOMICAL ONE LB. COVERS 250 SQ. FT.

1 lb. box.....	\$3.29	10 lb. bag.....	\$21.70
3 lb. box.....	\$8.49	25 lb. bag.....	\$48.25
50 lb. bag.....	\$88.50		

ROHRER'S GOOD TURF LAWN GRASS SEED

GOOD GENERAL PURPOSE MIXTURE
1 LB. COVERS 250 SQ. FT.

1 lb. box.....	\$2.99	10 lb. bag.....	\$18.60
3 lb. box.....	\$7.29	25 lb. bag.....	\$39.25
50 lb. bag.....	\$74.50		

TRI-RYE LAWN GRASS SEED

1 lb. box.....	\$2.79	10 lb. bag.....	\$22.30
3 lb. box.....	\$7.49	25 lb. bag.....	\$47.75
50 lb. bag.....	\$91.50		

SHADY LAWN GRASS MIXTURE

Best For Shaded Areas

1 lb. Box.....	\$3.19	10 lb. Bag.....	\$18.80
3 lb. Box.....	\$8.29	25 lb. Bag.....	\$39.75

Highland Pasture Mixture.....50 lb. bag \$71.50

Waterway Grass Seed Mixture.....50 lb. bag \$63.50

Horse Pasture Mixture.....50 lb. bag \$81.50

CROWN VETCH

1/2 Lb.....\$9.75

1 To 9 Lb.....\$15.50 Per Lb.

10 Lb. Or More \$14.50 Per Lb.

Innoculation Included

STORE HOURS

7:30 A.M.
to
5:00 P.M.
Saturday
7:30 A.M. to 3 P.M.

P. L. ROHRER & BRO., INC.

Smoketown, Pa.

Ph: 717-299-2571
FAX 717-299-5347



Sollenberger Silos Corp.

A Nittanhouse Company
Box N Chambersburg, PA 17201 (717) 264-9588

SINCE BEFORE 1910

Office Number - 717-264-9588

For Upright Silos Call
Bob Francis
717 532 6848

For Bunker Silos & Manure Systems
Call 101b Justus or Mike Hair
717 762 8663 717 263 0792

BINS & AUGERS

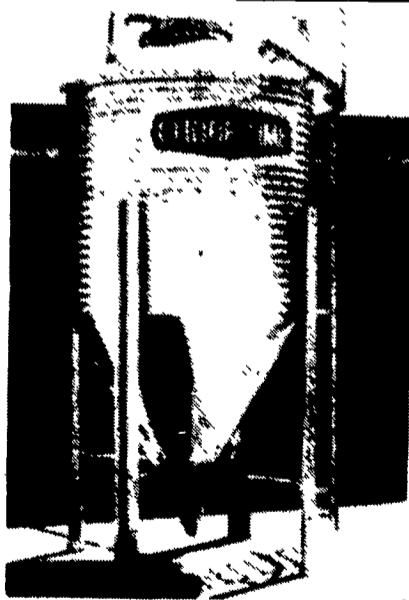
CHORE-TIME

AND

FLEX AUGER

FEED BINS

Your Best Buy



We Will Assemble And Deliver Bins To Your Farm!

We Stock Truckloads Of Chore-Time Bins
& Miles Of Chore-Time FLEX-AUGER

The feed bin is the very heart of any feeding system. If the bin lets you down, the system quits.

That's why we put so many quality features into our complete line of feed bins - which includes 6-foot diameter steel or polyethylene (great for H.M. corn), 6-foot, 7-foot, and 9-foot models. All are available in several capacities - so you have a wide selection of bins to fit your needs.

Here are just a few of the quality features that make our bins such an outstanding buy:

- Sturdy Ladder System
- All Bin Seams Are Double Caulked
- Choice of 16 or 25 Inch Hopper Opening
- All Galvanized Steel Parts

CALL OUR TOLL FREE CUSTOMER SERVICE NUMBER: 1-800-673-2580

Authorized **CHORE-TIME** Master Distributor

Northeast
agri
systems

NORTHEAST AGRICULTURAL SYSTEMS, INC.
FLYWAY BUSINESS PARK
139 A West Airport Rd
Lutz, PA 17543
(717) 569-2702



STORE HOURS
Mon-Fri
7:30-4:30
Sat. 7:30-11:30