

J.L. HOLLINGER & SONS, INC.
 Rt. 72 North, Manheim, PA
 717-664-2444 or 717-665-2354

New & Used Farm & Construction Equipment

BACKHOES

'86 Case 580E, cab, standard hoe..... \$17,250
 Case 580E, ROPS, extend a hoe..... \$15,000
 Case 580B, Cab..... \$8,500
 JD 410 Cab, standard hoe, nice..... \$10,500
 '79 Ford 555 cab..... \$9,000
 Ford 555B, cab, 4WD..... \$21,250
 JCB 3C, cab, very nice..... \$6,500
 JCB 1550 4WD, cab, extend-a-hoe..... \$17,500

CRAWLERS

Case 450C 6 way dozer..... \$16,500
 Case 1455B crawler loader w/ripper, excellent cond..... \$29,500
 '83 JD 455D crawler, GP bucket, nice..... \$14,750
 '83 JD 555A crawler loader w/backhoe attach..... \$15,700
 JD 855 crawler loader, GP bucket..... CALL

SKID LOADERS

Gehl 2610..... \$2,750
 Bobcat 743, very nice..... \$8,500
 Bobcat 943..... Call
 Bobcat 825 w/backhoe attach..... \$8,500
 Ford CL45 w/pallet forks & bucket..... \$6,500

FORKLIFTS

Case 586E, very nice..... \$16,500
 White 6000 Lb. gas engine, mag tires..... \$4,500

LOADER TRACTORS

Case 380 3 pt. PTO..... \$4,250
 JD 300 3 pt. PTO..... \$4,995

FARM TRACTORS

Deutz 5207 4x4 ROPS, 3 pt. dual outlet..... \$7,500

LAWN & GARDEN

Int. 1450 hydro w/blade & snowblower..... \$1,600
 Int. 107 hydro w/blade..... \$950
 Ford 145 hydro w/blade..... \$750

Leaman

Tractor Parts



329 Brenneman Rd.
 Willow Street, PA 17584
 (Lancaster Co.) 717-464-2874
 (Turn Left on Brenneman Rd. from 222 S at Reiten)

USED TRACTORS

IH D-282 Corn ~~SOLD~~ Running Engine
 3 Pt. Hitch To Fit Farmall M,
 Super M, 400, 450

Coming In - JD 730 diesel electric start, narrow front, tenders, 3 pt. 2 valves, very nice

IH 1466 black stripe, cab, air, very good condition

IH 1026 Hydro, excel. cond.

IH 1066 year around cab, good condition

IH 856, fender tractor

1981 IH 886 German cab, air, 1800 original hrs.

IH 2350 Quick attach loader

(8) 20.8x38 cast wheels, rims & tires to fit JD 8630 - will work for duals

JD 500C Backhoe Loader, PS, 2600 hrs.

JD 4020, WF, new 18.4x34, very nice

Case 830 diesel WF Eagle hitch, good condition

1975 Oliver 1755, factory cab, 1196 actual hrs., like new

3 Pt. Spray rig, 40' boom and twin poly tanks

WL 40 Westendorf quick attach loader to fit IH 06, 56, 66 tractors

COMBINES AND HEADS

1975 IH 815 diesel, hydro 810, 15' grain head

JD 444 Corn Head

JD 13' Rigid grain head

JD 213 grain head

JD 543 Cornhead 5R, 30"

Uni System 713, 716 grain heads

UNI 744 cornhead

COLLECTORS ITEM

JD 1926 Spoker-D

Ser. #35756 w/Extension Rims

1962 IH Westcoast Truck

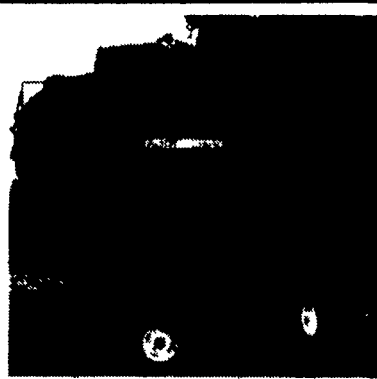
250,000 Original Miles

Int. ID-6

1959 Dodge Power Wagon

TRUCKS

1975 F500 Ford w/14' steel dump



Hay Basket \$2,095 F.O.B.
 Badger Associates
 1-800-822-3437



Tandem Hay Rake Hitch \$850 F.O.B.
 Louderback Implement Co. Inc.
 Stanley, VA
 703-778-5601

Mfg. By:

Agri-Link
 144 Fairmont Rd., Ephrata, PA 17522

717-354-0282
 Fax 717-354-4887

Description

No Trade Cash Price

ROUND BALERS

New Holland 855 1 Owner..... \$9,500
 New Holland 849..... \$7,500
 New Holland 846..... \$5,000
 New Holland 850..... \$3,900
 New Idea 484..... \$5,900

New Holland 1037 Automatic Bale Wagon..... \$10,500
 New Holland 495 12' Pull Type Haybine..... \$5,500
 New Holland 1469 Haybine..... \$4,500
 New Holland 411 Discbine..... \$7,850

MANURE SPREADERS

New Holland 679 Box..... \$4,500
 New Holland 518 Box..... \$2,900
 New Holland 519..... \$3,850
 New Holland 328 Box, Like New..... \$3,500
 New Holland 307 Side Delivery..... \$6,500
 New Idea 364..... \$5,800

WE SHIP UPS

CERESVILLE

FORD NEW HOLLAND, INC.

8102 Liberty Road, P.O. Box A
 Frederick, Maryland 21701

(301) 662-4197 1-800-331-9122



Used Corn Planter Specials
 JD 7000 6RN w/Dry Fert.
 JD 1440 w/Dry Fert.

JOHN DEERE

New Tractors
 2555 MFWD
 2955 MFWD w/265 Loader
 4255 PS, SG

BOBCAT

NEW
 743 B 753
 7753

Spreaders

JD 370
 JD 450
 JD 550
 JD 780
 JD 874

Tillage

JD 875 4R & 6R Cult.

Loaders & Blades

JD 245
 JD 175
 JD 95 Blade
 JD 65 Blade

Planters

JD 7200 4RN
 JD 7200 6RN

Drills

450 10' & 12'

Balers

JD 328
 JD 348
 JD 375
 JD 435

Mower Conditioners

JD 1360
 JD 1219
 JD 1600, 12'

Forage

JD 3950 Harvester
 JD 3970 Harvester
 JD 3 Meter Hay Pickup

Rotary Cutters

JD 1008
 JD 616
 JD 717
 JD 503

Compact Utility Tractors (New)

670
 670 MFWD
 770 MFWD
 870 MFWD
 855 MFWD
 955 MFWD

Misc. New

Easy Trail Wagons
 Model 1074, 1274
 Miller 4100 Forage Boxes

Farm Aid Mixer Wagons
 Dion Forage Boxes
 Kverneland Plows
 Kverneland Silwrap

USED

JD 5720 SP
 JD 3020, PS
 JD 3010
 MF 1100

JD 3970 w/7' PU
 JD 3960 w/3RN
 JD 3940 w/7' PU
 NH 890 w/Heads

JD 336 w/30 Ejector
 NI Dump Wagon
 NH 499 Haybine
 Vicon KM321

JD 24T w/#2 Ejector
 Bobcat 753
 Bobcat 743

Used Lawn & Garden
 JD 318 w/50"
 JD 318 w/46" & 3

Baggers
 JD 420 w/60"
 JD 430 w/80"
 Farmall 140 w/ Attachments

MILLER



3213 Black Gap Rd.
 Chambersburg, PA
 17201

717-263-4103
 717-532-6951



TAYLOR PITTSBURGH IMPLEMENTS

10' Rotary Cutter, Gear-Drive, Laminated Tail Wheels, Good Heavy Duty Cutter..... NOW \$4,795
 7' Rotary Cutter, 3-Point, Heavy Duty..... Now \$1,645

LIMITED QUANTITIES IN STOCK

. PERFECTA II S-TINES

Unverferth



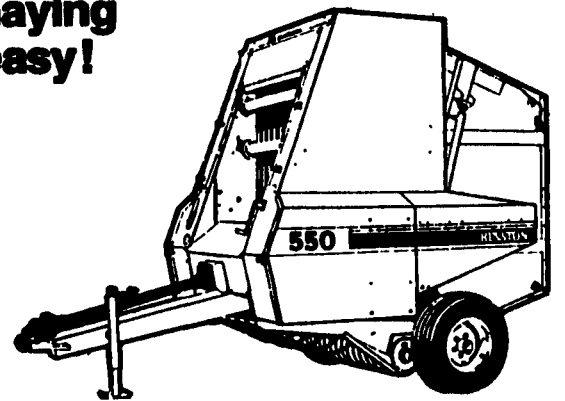
ONE EACH

8', 11', 13' Straight Frames
 18' and 22' Folding Frames

USED EQUIPMENT

Versatile 276 bi-directional tractor w/loader, 1984, 2533 hrs., good shape
 Hesston PT-7 Mower Conditioners, 7' Cut - 3 Available
 Hesston 1090, 9'3" cut, good
 Hesston 3700 tedder/rake, 3-pt.
 Hesston 550 round baler, ex. cond., used very little
 MF 1010 w/48" mid-mount mower, 118 hrs.
 NH 269 square baler, avg.
 Hesston 60-66 Tractor, 2 WD, 1200 hrs., 51 HP, very good Cond.

Hesston Heavy Duty 550 Round Baler makes haying easy!



550 Round Baler w/31x13.5 Tires, Electric Bale Monitor, Ejector And Gathering Wheels, 47" x up to 75" Variable Chamber, Demo, One Only
 List \$17,700

Now \$11,450

1130 Mower Conditioner, 9'3" Cut, Hyd. Tongue, 9.5L Tires, Five Reel Bats, 110" Rolls,
 List \$12,000

Now \$8,989



HESSTON
 THE PRIME LINE



Your Farm and Lawn Equipment Headquarters

5149 Cap Stine Road
 (Mt. Zion Rd. Exit off 340)
 Frederick, Maryland 21701
 301-473-4250
 301-293-6833

