

**Cowan Equipment**

Martinsburg, PA  
814-793-4293 Day or Evening

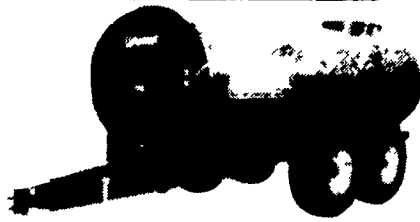
- JD 5820 chopper, 4 row corn head & grass head
- JD 5400 chopper, small knives, 1,900 hrs., 3 row corn head & grass head, very sharp, 1 owner
- Gleaner F2 combine & grain head
- JD 2755
- JD 2950, cab & air, 4WD, 38" rubber
- JD 2950, 4x4
- JD 2950, 2WD
- JD 2750, excellent conditon
- JD 2840, hi-low, dual hydraulics, radial tires
- JD 4430, cab & air, quad range
- JD 4430, cab & air, power shift
- JD 4230, 4 post, power shift
- JD 4320, 38" rubber, excellent condition
- JD 4020 power shift, dual hyd.
- JD 4020, side console
- JD 3020, side console, hi clearance
- JD 3020, side console, '72 model
- Ford TW25, cab & air, 4x4
- Ford 9700, cab & air
- Ford 7700, 2,300 hrs.
- Deutz DX140, cab & air, 4WD
- AC 200
- AC 175 diesel
- IH 1566, cab & air
- IH 1486, cab & air, '81 model
- IH 1086, cab & air
- IH 1066, red cab, radial tires
- IH 1066, cab & air.....\$9,000
- IH 856 w/cab
- IH 560 gas
- IH 584 utility
- White 2-105, cab & air
- White 2-70, red stripe
- Oliver 2255 w/cab, 4WD
- Oliver 1855 w/cab
- Oliver 1850 diesel w/3 spd.
- JD 350, 6 Way Blade
- Miller 10' offset disc
- Brillion 6 Row Cultivator
- JD 7000 corn planter, 6 row, no-till
- Axle mount duals for IH 38"
- Roll guard for 2950..... \$650
- Turbo charger for a 4030
- Turbo charger for a 4230

**3020 JD Diesel**

Power Shift, Hinkler Cab,  
New Tires and Paint

Must be seen  
to appreciate

**717-448-2009**



**NEW SPREADERS IN STOCK  
FOR IMMEDIATE DELIVERY**

**USED LIQUID MANURE EQUIP.**

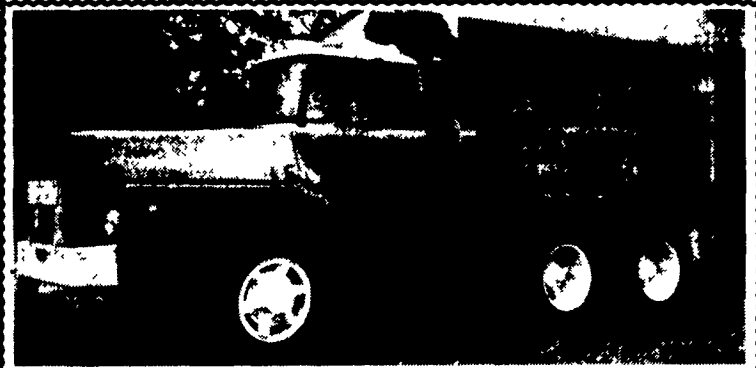
- 1500 Gal. Badger Spreader Tank As Is \$900
- FOR SALE OR LEASE**
- Spreader Tanks - 2250 Thru 6500 Gallons
- Vacuum Tanks - 1500 Thru 4500 Gallons
- Earthen Pit Pumps
- Vertical Shaft Pumps
- Truck Mount Tanks - 2250 Thru 4500 Gallons
- Propeller Agitator
- Replacement Vacuum Pumps - 177 Thru 353 CFM's

**SNOOK'S EQUIPMENT**

RD 3, Box 84, Mifflinburg, PA 17844

PH: (717) 966-2736

ASK FOR ERNEST OR DEAN  
"WE'RE HERE TO SERVE YOU"



**8 Ton Prentice Crane**  
On Mack Truck, Very Good Condition

**\$12,500**

**410-486-6691**

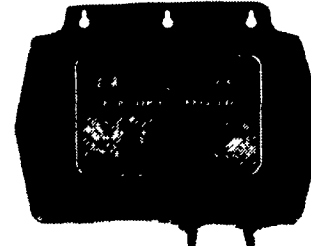
**Hotline The Better  
ELECTRIC FENCING**

Quietly  
Professional

**NOW IMPROVED**  
Better  
Lightning Resistance

Miles Of  
Shock

- NEW LESS EXPENSIVE MODEL
- HIGH POWERED WALL MODELS
- 3 MODELS OPERATED FROM A RECHARGEABLE BATTERY
- 3 MODELS OPERATED FROM 110-120V PLUG IN
- COMPETITIVELY PRICED
- LOCAL SERVICE
- DEALER INQUIRIES INVITED



- ALL-WEATHER (NON-RUST) VERY STRONG POLYCARBONATE CASE
- COVERED BY GUARANTEE
- REPLACEABLE PRINTED CIRCUIT
- CONSTANT PULSE RATE
- OVER VOLTAGE INPUT PROTECTION
- NO MOVING PARTS (Solid State)

Over a QUARTER OF  
A CENTURY of manu-  
facturing Electric Fencers

**BUCK HILL FENCER SHOP**

Benj. S. Miller  
2019 Smyrna Rd., Paradise, PA 17562

Authorized Hotline Sales & Service Dealers

- Samuel S. King, 501 Coopers Drive, Kirkwood, Pa. 17536
- Stoltzfus Harness Shop, RD 4, Box 13, Broad St., Honeybrook, PA 19344
- Barlow Engine Repair, 11738 Weaver Rd., Orrstown, Pa. 17244
- Black Rock Repair, 858 Pumping Station Rd., Kirkwood, Pa. 17536
- White Horse Machine, 5566 Old Phila. Pike, Gap, Pa. 17527
- Winter Rd Diesel Service, RD 1 Box 14, Loganton, Pa. 17747
- Esh Farm Supply, 68 Clearview Rd., Ronks, Pa. 17572
- Aaron K. Beiler, 135 Monterey Rd., Bird In Hand, Pa. 17505
- Lititz Harness Shop, 765 W. Lexington Road, Lititz, Pa. 17543
- Beiler's Repair, RD 2 Box 54, Watsonstown, PA 17777
- Valley Hardware, 958 Vintage Rd., Christiansa, PA 17509
- Lykens Engine Repair, PO Box 575, Graiz, PA 17030

Sales, Service & Parts For  
AGCO Allis, Kubota,  
New Idea, Hesston,  
Bush Hog And Brillion

**MARSHALL MACHINERY, INC.**  
Rt 652, Midway Between Indian Orchard and Beach Lake.  
Honesdale, PA 18431 (717) 729-7117

WE SHIP PARTS  
DAILY BY UPS.  
Hours: 8-5 Mon.-Sat.

**SPECIAL**

NH 258 Side Rake With Dolly-Wheel Hitch, Rubber Mounted Teeth.  
**\$1,899.00**

**CHECK OUT Our Tillage Equip.**

- TANDEM DISCS:**
- IHC: 350 Smoothing 14 Ft.; 37 Smoothing 14 Ft.
- WHITE: 13 Ft.
- BUSH HOG: 12 Ft.; 14 Ft. Plowing; 13 Ft. Smoothing.
- AC: 2300 10 Ft
- MASSEY FERGUSON: 10 Ft. Leveling; 12 Ft. Smoothing.
- KEWANEE: 800 Super Flex 14 Ft., 8 Ft & 13 Ft. Rock Flex.
- JD: RWA 13 Ft Smoothing; BWA 12 Ft Smoothing.
- OFFSET PLOWING DISCS:**
- BH: 12 Ft. Reconditioned
- MILLER: 11 Ft. 3 Bar.
- KEWANEE: 12 Ft. Demo.
- JD: 14 Ft 340 Rebuilt; TWA 10 Ft.
- ATHENS: 11 Ft Tandem.
- PLOWS:**
- JD: 2800 On Land Hitch Reset; 2500 5X Semi-Mount Reset; 2800 5X Semi-Mount Reset; 3600 4X And 5X Spring Reset Trailer.
- IHC: On Land Hitch 710 6X; 720 8X; 720 6X; 735 Variable 5X. Several 7-14 Shank 3 Pt. Chisel Plows.
- Brillion 16 Ft. And 18 Ft. (Danish Tine) Spring Tooth Harrows.
- BUSH HOG: Chisel Plow 10 Shank.

**HAY & FORAGE**

- HAYBINES:**
- NEW IDEA: 270 And 272 Cut/Ditioners.
- NH: 489
- HESSTON: 1070, 1071, 1090, 1091, 1014 Hyd. Swing.
- DISCBINES:** DEUTZ: SM70.
- BALERS:** HESSTON: 4600 w/Thrower, 530 Round
- N.H.: 310 w/Thrower, 847 Round Balers. D/A: HD 490 w/ Thrower. N.I.: 484 Round Baler, Demo. **FORAGE HARVESTERS:** HESSTON: 2000-100, 2000-150, 7140.
- LARGE SELECTION OF PICK-UP & CORN HEADS. CALL FOR YOUR NEEDS.**
- FLAIL CHOPPERS:** J.D.: 3800. N.H.: 34, 36, 38. **FORAGE BLOWERS:** N.I.: 620, 622, Farmhand F89B Re grinder Blower.
- NH 256, 258 Side Rakes; NI Rakes; Fahr Four Star Centepede Tedders; New Deutz Fahr KS 2.60 Dual Rotary Rake w/Hyd. Fold For Easy Transport 19 1/2' Working Width

**TEST DRIVE One Of These  
In Our Yard**

- HI CLEARANCE:** Ford 2000, 7600; Farnall 140 w/Cultivator.
- AC:** 6060, 6080 4WD w/Ldr. ROPS Sunroof, 6080 w/ROPS & Sunroof; 7000 w/Cab, 7040 w/Cab, 200 w/Cab, 175 Gas; 180 Diesel, 185 Diesel, 190XT Diesel, D17 Diesel, 5040 w/Ldr., 160 w/Ldr., 140 w/Ldr., 6060 w/Ldr., 4WD.
- CASE:** 385 Utility Tractor w/Hydraulic Drive Sickle Bar Mower.
- DEUTZ:** DX140 w/Cab; DX90 4WD; 7085 w/Cab. **FORD:** 7000, 4600, 4000 w/Ldr., 3000 w/Ldr., 8N's, 540A w/Cab, 335 w/Ldr. & Cab - 641 w/Rotary Mower. **KUBOTA:** M8950 4WD w/Cab & Ldr., M 4950 4WD w/Ldr. ROPS Sunroof, 305 w/Ldr. 4WD. **IHC:** M, Super H, 140 w/Cultivator, Massey 135 w/Ldr. **SAME:** Saturno 80 4WD w/Cab.

**INDUSTRIAL**

- TRACTOR/LOADER/BACKHOES:** Case 480, 580, 580B, AC 715 C, Ford 3550; JD 410B 4WD, Enclosed Cab Sharp, Ford 600 And AC D15.
- DOZERS:** JD 450C w/6 Way Blade, AC 653 w/6 Way Blade, ACH3, Case 450 Crawler w/4 & 1 Bkt., JD 450 Crawler Loader, JD 455E Loader; Case 450C w/ROPS.
- LOADERS:** AC 640, AC 615, Massey 2135, NH L775 Skid Steer Ldr., NH 325 Skid Steer; Gehl 3510 Skid Steer, JD 440A And 440B Log Skidders, Pettibone B66 4WD Forklift, Assorted Tag-A-Long Equipment Trailers, Ford Lane Paver Model A-2; 20' Tandem Utility Trailer, AC 600 Forklift, Waldon 5000 Diesel Payloader, 4WD, Articulated.
- EXCAVATORS:** Cat 225 Excavator.

**STOP And Check Our Selection  
Of Manure Equipment**

- LIQUID:** 3000 Gallon Vandale Vacuum Pressure Liquid Spreader For Truck Mounting; Hawkbilt 3220 Gallon; H/M 2900 Gallon, 2400, Scavenger 1263; Betterbilt 1500 Gallon.
- VACUUM:** VanDale 2250 Gallon.
- Several NI And NH Box Spreaders, Various Sizes, Barrel Spreaders - NH 668, Hawk 207, JD 465.

**PARTIAL LIST Of Miscellaneous  
Equipment**

- FORAGE WAGONS:** Int'l 110 Chuck Wagon w/Roof, Lamco 3 Beater w/Roof; Kasten 3 Beater w/Roof.
- FEEDER WAGONS:** Knoedler Feeder Wagon, Knoedler Dial-A-Mix Wagon, E-Z Flow 220 w/Grain Wagon, Kilbros 250 Grain Wagon.
- TMR Mixer Wagon:** Butler 320, Schwartz 800.
- York Heavy Duty Pull Type Road Rake; Donahue 16' 5th Wheel Tandem Axle Trailer w/Sides, Hyd. Dump; Stoltzfus 30' Truck Mount Fertilizer Box And Lime Spreader, Case/IH 8610 Bale Processor, Hesston #10 Stack Hand And #10 Stack Processor, Kalyn MD6 Tandem Dump Trailer, Westfield 6"x20 Ft. Grain Auger, Shaver 3 Pth. Post Pounder, JD 30 2 Row Potato Digger, JD 2 Row Potato Planter, Champi 1-Row Potato Digger, MC 3 PTH Lawn Genie Pickup Mower, Jobber Rock Windrower, Used Wic 3 Pt. PTO Bedding Chopper, General 9 Ton Trailer.
- SPRAYERS:** Century 300 Gal. Tandem Trailer, Century 300 Gal. 3 Pth. Boom, Myers 100 Gal. 3 Pth.
- LARGE SUPPLY OF FRONT-END LOADERS AND CABS FOR VARIOUS MAKES OF TRACTORS.**

**Time To THINK About  
PLANTING EQUIPMENT**

- JD 8350 Dbl. Disc Grain Drill- 18 Disc; AC 2- 4- 6 Row Corn Planters; JD 2 Row Corn Planters; Brillion 21 Ft. Ex. Fold Cultipacker- Like New; Brillion 10 Ft. Cultimulcher; New & Used Brillion 8 Ft. & 10 Ft. Cultipacker Seeders; JD 2 Row Tool Bar Complanter 3-Pt.

**NOW IN STOCK NEW M&W 4590  
ROUND BALERS w/NETWRAP.  
CALL FOR MORE DETAILS  
COME BROWSE THROUGH OUR YARD AND  
CHECK OUT THE ACRES & ACRES OF  
EQUIPMENT AND USED TRACTOR PARTS**