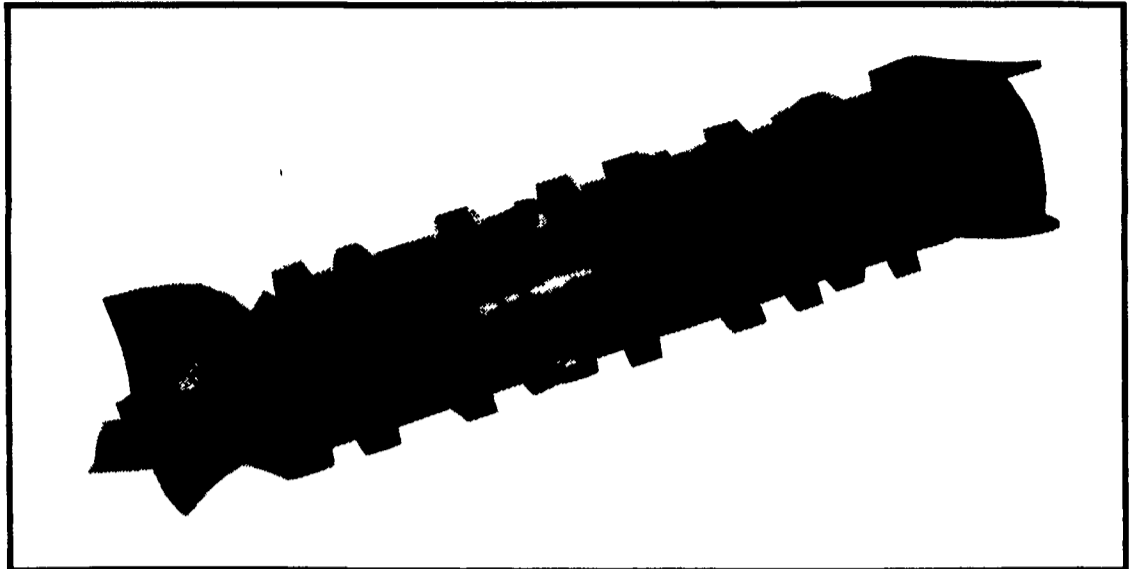


When Buying A NEW COMBINE

DON'T

OVERLOOK THE CASE IH AXIAL FLOW ADVANTAGE

the single rotor



With the *SINGLE AXIAL
FLOW ROTOR* you get:

- 1) **INCREASED PRODUCTION** by the ability to start combining earlier in the day, and to keep combining later into the night.
- 2) **BETTER GRAIN QUALITY** because the ROTOR'S threshing action is much gentler than a conventional combine's cylinder.
- 3) **LESS MAINTENANCE** because there is **NO** strawwalker system to repair.

DON'T

OVERLOOK THE HOOBER SERVICE ADVANTAGE

HOOBER'S experienced service people



With **HOOBER'S**
experienced SERVICE
PEOPLE you get:

- 1) Fulltime Combine mechanics who work on combines year round, not just when you have a problem.
- 2) **PEOPLE WHO CARE** about your problems and want to fix them fast, so that you can get back to the field.
- 3) **RECONDITIONED COMPONENTS** which are not for sale, but are strictly reserved for use by the **SERVICE DEPARTMENT** to insert in customers machines who have major component failures.



All New & Used Products
Backed By Hooper
Parts & Service

(717) 768-8231

HOOBER

C.B. HOOBER & SON INC.
INTERCOURSE, PA

