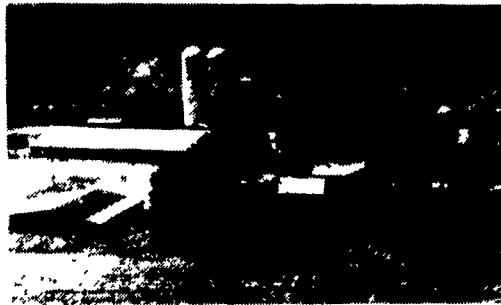


WIMPLE ASSOCIATES

SHOWPLACE STONE HOME FARM: 77 fertile acres with up to 290 available. Beautiful views. Elegant century old stone home restored to perfection has 5 bedrooms, 2 modern baths, exceptional kitchen with lots of cabinets and large New England fireplace. Many extras. Very good 45 stall barn with 2" pipeline, cow mats and 20x60 unloading silo. Inside of barn has also been completely remodeled. Anxious owner relocating and offers at \$145,000.

MORT WIMPLE ASSOCIATES
SLOANSVILLE, N.Y.
518-875-6355
FAX: 875-6749
FREE CATALOGUES

BRADFORD COUNTY



96 acre Farm, 2 homes, barn (180'x85'), heifer barn (40'x160'), (2) 24x90 silos and machinery buildings. Excellent for dairy, beef or other activities. \$195,000. Additional acreage available.

(215) 273-3761

**WEEKEND RETREAT SITES
PERMANENT HOME SITES
HUNTING CAMP SITES
CENTRAL JUNIATA COUNTY
60 MILES WEST OF HARRISBURG**

114 ACRES, 30 acres tillable, balance wooded, level to gentle slopes, small stream, ADJOINS LANDS OF GLATFELTER PULP-WOOD COMPANY WHICH IS OPEN TO PUBLIC HUNTING; asking \$900 per acre, MAKE OFFER;

1 1/2 ACRES, level land, part open part wooded, mountain stream, \$14,500.

10 ACRES, gentle slope, part open part wooded, adjoins lot of wood land belonging to farm that invites hunting w/permission, standard septic permit; \$24,500.

OTHER PARCELS available not on this list;

PLEASE NOTE: All parcels are sewage tested, have electricity & phone, easy access, are located within 8 mile of STATE LANDS and STOCKED TROUT STREAMS and ready to build on as soon as settlement can be arranged. Owner financing on some parcels.

LARRY LONG REAL ESTATE

R.D. #2, Box 410, Port Royal, PA 17082
PH. 717-527-4784 any time

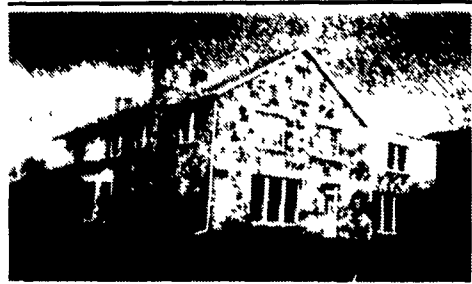
RE/MAX • RE/MAX • RE/MAX



realty
agency, inc.
144 South Eighth Street
Chambersburg, PA 17201
717-267-0011
Toll Free
800-626-7186



For Information On The Properties
Listed Below Please Call: Agent
Ronald L. Richards, CRS-GRI
HOME (717) 485-4103



McCONNELLSBURG - \$89,900

Large 200 yr. old Mt. stone - Excellent for bed & breakfast.



McCONNELLSBURG - \$224,900

Luxurious Country Estate - 3 BR, 15 Acres, Panoramic View.

RE/MAX • RE/MAX • RE/MAX

DEVELOPMENT POTENTIAL

Almost 40 acres with frontage on a township and state road. 1 hr to Baltimore, 12 minutes to York, currently a profitable cage-layer operation. Call 717-464-4700.

50 ACRE FARM

40+ acres tillable. Large farmhouse with modern kitchen, large barn, 3 car garage & shop, 2 silos, fertile soil, stream. Call 717-464-4700.

SECLUDED 31.4 ACRES

Of level, open ground in Penn Manor School District. \$169,900. Call 717-464-4700.

53 ACRE FARM

In beautiful surrounding just 15 minutes from Lancaster. Woods, stream, farmhouse, spring house, 3 car garage and lots of road frontage. \$350,000. Call 717-464-4700.

EXTRAORDINARY DAIRY FARM

In Southern Lancaster County. 175 acres of level chester loam soil. 135 acres tillable, 35 acres pasture with stream, nice 5 acre wooded lot. Large stone stucco home remodeled throughout, 3 Harvestore silos, 1 cement silo, implement shed, hog pen, heifer barn. A must see property for \$6,000/acre. Call 717-464-4700.

VERY LARGE DAIRY BARN

And old stone house on 32 acres. Adjoins major highway, industrial zoning. Call 717-464-4700.

AMERICAN HERITAGE

Willow Street
717/464-4700
Quarryville
717/786-2131



**NEW YORK STATE FARM TO BE SOLD AT
ABSOLUTE AUCTION
FRIDAY, MAY 29, 1992
10:00 A.M.**



Showplace farm is located on NYS Rt. 41, Willet, NY (Cortland County), 35 miles North of Binghamton, NY. Approx. 332 Acre dairy farm to be sold in parcels, or in its entirety. Farm has (2) Harvestore silos, (2) concrete silos; (98) ties on pipeline, (115) ties in all plus calf stalls; 1200 Gal. bulk tank; Beautiful, recently remodeled larger farm home. Farm will be surveyed, pinned & staked. FARM SELLS AT ABSOLUTE AUCTION, TO THE HIGHEST BIDDER, REGARDLESS OF PRICE!! Selling same day (135) head good Holstein Cattle, full line of late model farm machinery to include JD #4255 4WHD tractor (40 Hrs.). For more detailed information contact:

Owners:
LAKESIDE FARMS
Charles Sr. & Robert Eaton
Co-Managed:

Mel Manasse
Licensed R.E. Broker/Auctioneer
Whitney Point, NY 13862
Tele: (607) 692-4540
1-800-MANASSE

Carol Wood Realty
Carol Wood, Broker
Cincinnatus, NY 13040
Tele: (607) 863-4143
(607) 863-4142



OTHER FARMS AVAILABLE
Please Call and Tell Us Your Preference
PAUL M. LONGACRE
REAL ESTATE BROKER
Rt. 100 Hereford, PA 18056
Ph: 215-679-5919
Donald R. Longacre, A.S.B. (215) 679-5910
Paul Zeisloft, R.E.S. (717) 437-2305
Wilson Hoffman R.E.S. (215) 845-2443

BEDFORD COUNTY

• 454 Acres m/l With About 2,000' Road Frontage. Approx. 280 Tillable And Contoured. 100 Acres Of Woodland, Rest Pasture, Spring Fed Ponds And Small Streams. House Needs Rebuilding, Trailer Site On Property, Barn Needs Repairs, With 1 Good Free Stall Building With Silo On Property. \$495,000.

• 191.26 Acres m/l, 155 Tillable, Gently Rolling Long Fields, Good For Corn And Alfalfa, 30 Acre Woodland, 6 Acres Pasture. 86 Free Stall Barn, With Divided Feeding, Double Six Milking Parlor, Low Line Automatic Take-Off, 1,500 Gal. Bulk Tank, With Washing Equipment, Etc. 4 Silos, 1 Poured Concrete For Haylage, 16x60, 1- 20x70 Concrete Slab For Corn Silage, 2- 12x40 Used For Shelled Corn With 150x30 Trench. Also Has Large Slurry Pond. 2 Houses In Good Condition, All Modern Conveniences. 1 Brick 2 Story 9 Room, 1 1/2 Bath, 1 Frame With 4 BR, 9 Rooms, 2 Baths. Price \$750,000 With 100 Very Good Dairy Cows And 70 Heifers. Must See This Farm To Appreciate It! It Has A Lot Of Road Frontage.

• 13.25 Acres 1/2 Wooded, 1/2 Open With Road Frontage, Priced Reduced \$25,000. Call Paul Zeisloft 717-437-2305.

BRADFORD COUNTY

• 116 Acres Dairy Farm, Approx. 80 Tillable, Rest Pasture, Lg. 2 Story Frame House, Modern Family Kitchen, Lg. LR, Family Room, 2 Baths, 8 BR, Laundry, W/W Carpet, Lg. Dairy Barn With Double High Trashing Floor With 1 Story Addition, 70 Tie Stalls, Pipeline Milker With Lg. Bulk Tank, 3 Silos, Harvestore Grain Silo, Lg. 4 Bay Garage 36x60 Metal, \$225,000.

• 120 Acres, 65 Tillable M/L, Pasture 40 Acres, Remainder Wooded. Containing 3 Houses, (1) 2 Story, 8 Room, 1 1/2 Baths, w/Attached Garage, (1) 1 1/2 Story, 7 Room, 2 Car Detached Garage, (1) 1 Story, 3 Br., Bath, Detached Garage. 44 Stall Cow Barn, Milk House, Bulk Tank, Pipeline Milker. All Modern Conveniences. 2 Concrete Silos. Asking \$250,000. Can Be Subdivided.

• Dairy Farm 480 Acres M/L Price \$680,000. 2 Houses Both 2 1/2 Story, 1 very Large Bedroom, Center Stairs, Large Farm Kitchen, 2 Baths, Large LR/DR, Office and Sewing Room, Lg. Family Room, Full Basement, Oil/Hot Water Heat. This House was Completely Refurbished. Tenants House Completely Redone. Oil/Hot Water Heat Baseboard, Lg. Kit., Dining Area, 3BR, One Car Garage Attached. 174 Free Stall Barn, with 7 Computer Feeding Units, 13,000 Bu. Grain Storage with Grinder Unit and Mixing Unit to Handle 200 Head Dbl. 8 Stall Milking Parlor, with New Automatic Take-Off, 2-1500 Gal. Bulk Tank, 3- 24x60 Concrete Stave Silos with 1- 20x60 Concrete Stave Silo all with Unloaders and Grain Storage and Mixing Area for Feeder Wagon Feeding in Both Barns. Heifer and Dry Cow Barn for Graded Stalls and Feeding Area and Catching Area, 125 Head. Farm Plans for Setting Up Gravity Flow Manure Holding Area. Big Machinery Shed in Enclosed Repair Area. Cattle and Farm Machinery Available at Extra Cost.

TIOGA COUNTY

• 96.325 acres m/l, b SALE up for number of stalls, tack room; br., large farm pond spring fed.

• 182 acres m/l dairy farm, 53 tie stalls with 2- 16x55 concrete stave silos, shop 30x30, horse barn 30x52, 2 1/2 " S.S. pipeline milkers, 500 gal. bulk tank, bull pen, heifer barn. 2 story frame house with aluminum siding, "big" modern farm kitchen with solid oak cabinets, LR, DR, laundry, office, wall to wall carpet throughout, 3 BR, 2 full baths, plus attic, \$200,000. Cattle, Machinery At Extra Cost.

NORTHAMPTON COUNTY

• 68 acre dairy farm, 4 stall surge milking parlor with feeding, 39 free stalls and loose housing and heifer barn, 1600' ML road frontage on Rt. 191, large frame house and small summer house, needs repairs. 65 building lots laid out by engineer. Call for details. \$595,000. Price Negotiable.

MONTOUR COUNTY (Between Washingtonville & Danville)

• 133A m/l a prestigious estate farm has everything to offer. Location, privacy, a lg. frame 4 br. house w/2 full baths, modern kitchen and dining combination, den, LR w/fireplace, picture window overlooking 3 acre pond, 100 tillable acres, large bank barn equipped for beef & hog, large pole shed for equipment, located in good farming area. Shown by appointment only. Contact Paul Zeisloft, 717-437-2305.

COLUMBIA COUNTY

• 350 Acres Steer or Horse Farm, on Gently Rolling Land, Good Alfalfa and Corn Ground. Can Be Subdivided.
Lots of Road Frontage. Price Negotiable.
• Nice Place to Build your Dream Home! 70 Acres with Stocked Farm Pond. Lots of Road Frontage on Rt. 44. 1 Mile North of Jersey Town. \$175,000.