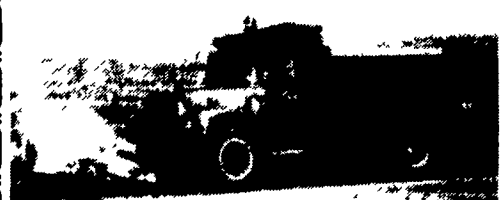


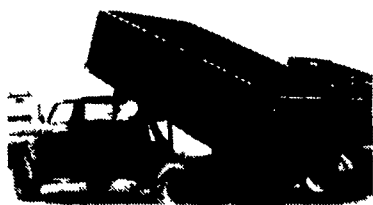
GMC Suburban SLE 1989 4WD, fully optioned, \$15,500. 717/741-2782 York Co.  
 FOR SALE: 1978 INT. 4070, 350 Cummins, 10 spd, wet line, 70% rubber, \$4500. 215/286-6981.

Lancaster Farming, Saturday, May 16, 1992-C33



**International Loadstar 1600 Dump**  
 V8, PS, PB, 2 Speed Rear, 38,000 Original Miles, Owned By Local Boro Since New  
**\$4,500**  
 Your Choice Of Two With Snow Plow And Cinder Spreader  
**717-865-3488**

**HOSTETLER TRUCK CLEARANCE**



1975 Ford F600 Grain Truck, V8 Gas Engine, 5 & 2 Speed Transmission, 21,000 # GVW, New Knaphelde 14' Grain Body With 40" Steel Grain Sides, New Harsh R1, B10 Scissor Holst, Body and Holst Sell For \$5,000 Alone, Was Priced \$7,550  
**NOW MUST SELL \$6,995**



1974 International Cab Over Grain Truck, Cat Diesel, 5 Speed, 26000 # GVW, 14' Grain Body With 40" Steel Grain Sides and Holst. Was \$5,770. Then Dropped To \$4,995, Now We Are Listening To Reasonable Offers.

**Other Trucks In Stock**

1979 International S1600, 345 V8 Gas Engine, 4 Speed, Only 34,000 Original Miles, 20,000 # GVW, New 14' Knaphelde Grain Body and Sides with Double Acting Tailgate, New Knaphelde Holst..... **\$9,400**  
 1981 International S1700 Cab and Chassis, V8 Gas, 4 & 2 Speed, Recent Rebuild On Engine..... **\$3,995**

Other Trucks In Stock Call For Complete List And Details



**Hostetler Truck Bodies & Trailers**  
 Rt. 322 Milroy, PA 17063  
**(717) 667-3921**

'89 Dodge D250 3/4 ton, 4x4, 318, auto., PS, PB, AM-FM, 7,500 GVW, dark blue, 46,000 miles, excellent condition, \$8,975. 717-733-2873

'89 Ford F350, dual whl., super cab, 7.3 diesel w/9' Reading utility body, auto., PB, PS, dual tanks, 10,000 GVW, excellent condition, \$13,500 717-733-2873

1976 Ty-Brook 26' dump trailer w/teflon liner, asking \$5,500. (215)588-7346.

1978 Chevy Pickup Custom Deluxe 30 Series, 350 automatic. 1972 Jeep Commando 4 wheel drive, good drive crane 717/648-6490.

'75 IH Fleetstar 1700, 392 gas engine, air brakes & trailer plate, body & engine good condition, good cattle trailer truck, 814/349-8054.

'76 Chevy stake dump, excellent condition, must sell, small operation. 215-536-8624.

**Royal Automotive TRUCK SALES & LEASING**

Coopersburg, Pa. Rt. 309

**(215) 282-4090**  
**(800) 283-4090**

Just Off I-78, Between Allentown & Quakertown



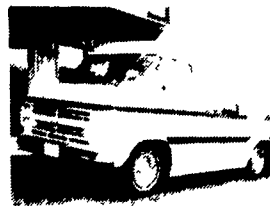
Del. 88 Int. \$1800 14' Ref. With T/K Self Contained Del. Unit, 5 Spd., 24,500 GVW, 51,000 Orig. Miles, Exc. Cond., Avail. For Sale Or Lease.



1985 Ford F700 14' Stake Dump 370 V8, 4/2 Spd. Trans., PS, PB, 38,000 Miles, In Like New Condition.



Diesel 1983 Int. S1754 14' Stake Body Crew Cab, Flip Up Power Lift Gate, Int. Del. Allison AT, PS, 36,000 Miles, In Excellent Condition



1987 Chevy Starcraft 1/2 ton high top conversion van, loaded, wired for TV & VCR, A-title w/only 47,000 miles, MUST SEE.



Very Rare - 85 GMC, 7000 16' Flat Bed Scissor Lift & Dump, 366 V8, 5/2 Spd Trans, PS, 32,000 GVW, Air Brakes 62,000 Original Miles



Diesel 1982 Ford LN7000 22' Stake Body, 3208 Cat Diesel, 5/2 Spd, Air Brakes, 30,000 GVW, Excellent Condition.

**TWO ACRES OF ALL TYPES USED TRUCKS.**  
**"IF WE DON'T HAVE IT, WE'LL GET IT"**

**SELECTION • SAVINGS • SATISFACTION**

AT PENNSYLVANIA'S

**FASTEST GROWING FORD TRUCK STORE**

**New 1992 Ford Flaresides In Stock!**

**CALL TODAY NEW TRUCKS DUE IN:**  
 F-250 4x4 XLT Diesel, 5 Spd  
 F-250 4x4 XLT Supercabs  
 1 Gas, 1 Diesel



**CURRENT FORD OWNERS ONLY \$2000 BRONCO REBATE! 3 IN STOCK**

**YOUR TRUCK EXPERTS**

Brian McCulley  
 Doug Stark, Terry Snyder,  
 Don Smith  
 Clarence Althouse  
 Errol Nothstein  
 Kevin Redcay



Choose From 2 In Stock One With Plow!  
**1992 FORD F-250 XLT 4x4 DIESEL**

Wester Pro-Plow Pkg, 4.10 Rear, Manual Locking Hubs, Electronic Automatic Overdrive, Air Condition, Anti-Lock Brakes, Cruise Control, Tilt Wheel, All Terrain Tires, Power Windows, Power Locks, Tinted Glass, Tachometer, Gauge Package, Chrome Step Bumper, Cargo Box Light, Electronic AM/FM Stereo, Cloth Seat.



**1992 F-150 XLT SUPERCAB "2 IN STOCK"**

1 w/Capt. Chairs, 1 w/Bench Seat, 5.0l. EFI, Electronic Automatic Overdrive, 3.55 Limited Slip Rear, Trailer Tow Pkg., Aluminum Wheels, Chrome Step Bumper, Deluxe Tu-Tone, Air Cond, Power Windows, Locks, Mirrors, Tilt Wheel, Cruise Control, XLT Lanat Trm, Sliding Rear Window, Anti-Lock Brakes.



**1992 F-350 CREW CAB DIESEL DUAL REAR WHEEL**

XLT Lanat, 7.3L Diesel, Electronic Automatic o/Drive, 4.10 Limited Slip Rear, Anti Lock Brakes, Air Conditioning, Camper Package, Chrome Step Bumper, Tachometer, Power Windows/Locks, Recreation Mirrors, Tilt Wheel, Cruise Control, Sliding Rear Window, Gauge Package, LT215/85R16 All Season Radials, Cloth Seat Trm, Spare Tire & Wheel.



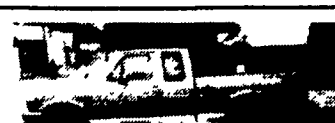
**1992 F-150 4x4 XLT SUPERCAB "SHORT BOX 6' BED"**

5.8l EFI, Electronic Automatic Overdrive, Touch Drive Trailer Tow Pkg, Deluxe Tu Tone, Chrome Step Bumper, Aluminum Wheels, AM/FM Cassette, Electric Mirrors, Sliding Rear Window, Tachometer, P265 Rwl A/T Tires, Speed Control, Tilt Wheel, Power Windows, Locks, Cap't Chairs, Anti-Lock Brakes



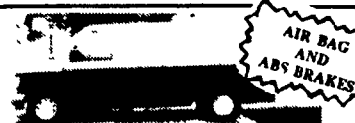
**1991 F-SUPER DUTY DIESEL LANDMASTER DUMP**

Dump and Utility Body Combined, Pintle Hook, Cargo Top, Step Bumper, Trailer Ball, and Rear Chute, 7.3L Diesel, H.D. 5 Speed Overdrive, Super Engine Cooling, Vinyl Trim, Tinted Glass, Anti-Lock Rear Brakes, All Terrain Tires, AM/FM Stereo, Super Engine Cooling. Must See This Unique Truck  
**CLEARANCE PRICED**



**1992 F-150 4x4 XLT SUPERCAB "FLAIRSIDE MODEL"**

5.8L EFI, Electronic Automatic Overdrive, Touch-Drive, Chrome Step Bumper, Handling Package, Electric Mirrors, AM/FM Cassette, Tachometer, P235 OWL A/T Tires, Chrome Wheels, Lower Account Tu-Tone, Speed Control, Tilt Wheel, Air Conditioning, Power Windows, Power Locks, Captain Chairs, Anti-Lock Brakes.



**1992 E-150 XLT CLUB WAGON "TRUCK OF THE YEAR BY MOTOR TRENDS MAGAZINE"**

5.8L EFI, Electronic Automatic Overdrive, 3.55 Rear Axle, Deluxe Tu-Tone Clearest, Power Drivers Seat, Aluminum Wheels, Anti-Lock Brakes And Drivers Side Air Bag, Trailer Towing Package, Privacy Glass, Sliding Side Door, Quad Capt. Chairs, 7 Passenger, Speed Control, Tilt Wheel, Power Windows, Power Locks, Electronic AM/FM Cassette, Air Conditioning.



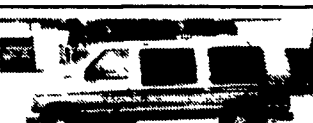
**1992 F-150 4x4 "AIR CONDITIONING NO CHARGE"**

4.9L EFI 6 Cyl., 5 Speed Overdrive, Anti-Lock Brakes, Power Steering and Brakes, Argent Step Bumper, Electronic AM/FM Stereo, Clock, Headliner/Insulation Pkg., Manual Locking Hubs, 6625 GVWR, P235 All Season Steel Radials, Vinyl Bench Seat, Gauge Package, Tinted Glass, Chrome Bumper. List Price \$17,454  
**Sale Price \$13,995**



**1992 E-150 CONVERSION HI-TOP CENTARUS XLT**

5.8L EFI V8, Electronic Automatic Overdrive, Trailer Tow Package, P235 OWL All Season Radials, Power Windows, Locks, and Mirrors, Anti-Lock Brakes, Drivers Air Bag, Aluminum Wheels, Quad Luxury Capt. Chairs, Rear Seat Bed, Quick Release Seats, Ultra Gloss Walnut Trim, Dust Buster, Auxiliary A/C Unit, Rear Stereo System w/Headphones, Dustie Shades, Color TV, Vista Bay Windows, Color Fade Paint, Luggage Rack, Continental Kit, Comp. Luxury Van.



**1992 E-150 CONVERSION LO-TOP CENTARUS XL**

5.0L EFI V8, Electronic Auto Overdrive, Trailer Tow Pkg., P235 OWL All Season Radials, Power Windows, Locks, and Mirrors, Anti-Lock Brakes, Driver's Air Bag, Aluminum Wheels, Quad Luxury Capt. Chairs, Rear Seat Bed, Quick Release Seats, Ultra Gloss Walnut Trim, Dust Buster, Duetto Shades, Color TV, Vista Bay Windows, Color Fade Paint, Luggage Rack, Continental Kit, Complete Luxury Van.



**HALDEMAN**

MAIN STREET • KUTZTOWN, PA • (215) 683-3553  
 BUSINESS HOURS 8:30 AM- 9 PM (MON.-THURS.) 8:30 AM-6 PM (FRI.-SAT.)  
 CONVENIENTLY LOCATED BETWEEN READING AND ALLENTOWN

