



**Your Complete Headquarters For
Sprayers And Parts**

**HEAVY DUTY SPRAYERS
BUILT STRONG TO PERFORM TOUGH**



- 200, 300 & 500 Gal. Trailer Models
- 110, 150, 200 & 300 Gal. 3 Pt. Hitch Models

FEATURES AVAILABLE:

- 30', 35' and 40' Booms
- 30' & 45' All Hydraulic Folding Boom
- **Quick Tejet** No Drip Nozzles
- Independent Boom Suspension Eliminates All Boom Bouncing.

**At Last! A Reliable, New Stainless Steel
AG-CHEM FOAM MARKER** Reg. \$832.00 **SPECIAL \$798.00**

Each Foam Marker Contains:

- Mixing chamber for each boom.
- Electric harness for in-cab controls (on-off/left-right)
- Drop hoses for each boom
- Hose for boom lengths up to 47'.

The Ag-Chem foam marker offers you efficient operation with a 12 volt compressor that draws only 9 amps. Independent left and right boom markers can be controlled from the cab for on-the-go operation. That lets you operate either boom marker for precise, economical foam placement. And best of all the Ag-Chem Foam Marker produces a dense foam within seconds of agitation, and has a dependable output that can be adjusted for volume.

Use with the new 80-to-1™ high concentrate foam.



**TERRA-TRONICS I
Electronic Monitor Measures Working Acres
And Ground Speed**

- Easy-to-see digital readout
- Easy-to-operate touch sensitive keys
- Operates with any field implement requiring acre measurement - pulled, mounted, or self-propelled sprayers, combines, etc.

Reg. \$202.00

SPECIAL \$176.00

**Handy
Half Gallon
AG FOAM**

Reg. \$9.85

SPECIAL \$8.95



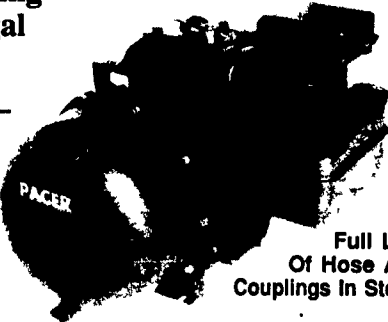
24000 CALIBRATION KIT

- TeeJet Calibration Calculator
- TeeJet Calibration Container
- TeeJet Tip Cleaning Brush
- Instruction Manual
- Agricultural Spray Products Catalog
- TeeJet Nozzle Selection Guide

Reg. \$59.44

SPECIAL \$53.50

**Self-Priming Centrifugal
Pumps**



- 3 H.P. 'S' Series
- 1 1/2" Or 2" Ports

Reg. \$210.00

SPECIAL \$183.75

Full Line
Of Hose And
Couplings In Stock!

Features:

- Self-priming to 20 feet
- Total heads to 120 feet
- Capabilities to 200 U.S. GPM
- Built in check valve
- Equipped with 1 1/2" or 2" female threaded connections, NPT

- 5 H.P. 'S' Series
- 2" Ports

Reg. \$250.00

SPECIAL \$218.75

- 5 H.P. 'S' Series
- With I/C Briggs Engine,
- 2" Ports

Reg. \$330.00

SPECIAL \$288.75

- 5 H.P. 'S' Series
- With Honda Engine,
- 2" Ports

Reg. \$464.00

SPECIAL \$406.00

• 7 HP 'S' Series Pump 3" Ports - Reg. \$440.00

SPECIAL \$385.00

• 'S' Series Pedestal Pump Only 1 1/2" or 2" - Reg. \$136.00

SPECIAL \$119.00

Raven Tough Polyethylene Tanks



• SPRAYER TANKS - ALL SIZES
For New Or Replacement AVAILABLE FROM

• STATIONARY TANKS - For Liquid Fertilizer Storage 25 GAL. to 2500 GAL.

We Also Stock A Complete Line Of:

TeeJet
Sprayer Nozzles
And
Accessories

Hypro
Pumps
And
Accessories

**PACER
PUMPS**

- Sprayer Hose
- Ball Valves
- Nylon Fittings
- Poly Tanks

PAUL B. ZIMMERMAN, INC.

295 Woodcrest Rd., Lidsa, PA 17343

1 Mile West of Ephrata

(717) 738-1121

HOURS
Mon., Tues., Fri. 7:30
Thurs., Wed. 7:30
Sat. 7-4:00

• HARDWARE • FARM SUPPLIES • CUSTOM MANUFACTURING • CRANE SERVICE

1992 Pennsylvania Machinery Custom Rates

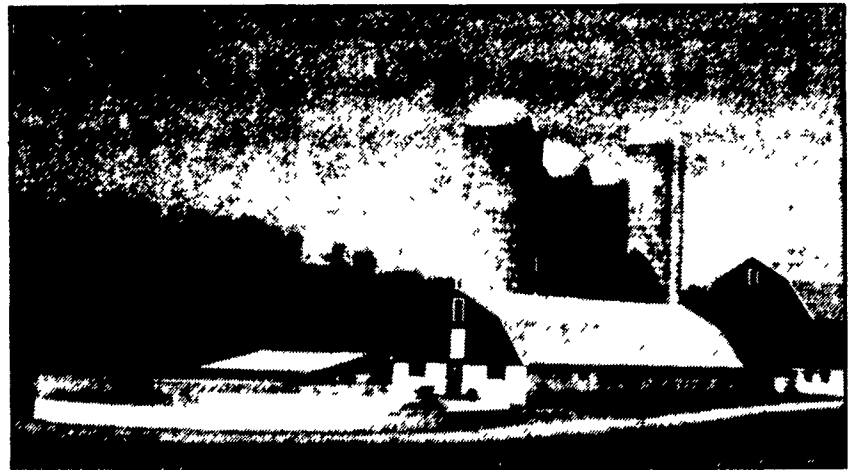
The custom rates shown are averages from voluntary reports by custom operators throughout Pennsylvania. Most of the rates are stated per acre, cwt., ton, bale, or bushel rather than per hour to reduce the variation due to machinery size. Individual rates vary because of differences in working conditions, services performed, or even the operator's eagerness to do custom work. Therefore, the average rates

shown should not be considered absolute indications of fair charges. Acreage rates are shown separately for two regions of the state, labeled "Mountain" and "Valley." The differences in rates between regions reflect differences in terrain, soils, and alternative opportunities for the labor and equipment used. Figures labeled "the state" represent the straight average of all reports used regardless of geographic location. Custom rates are slightly higher this year. Of the 68 rates reported, 63 percent have increased, 20 percent have decreased, and the remaining 17 percent are the same as last year. The overall average is up two percent from the previous year. This percentage increase was computed by adding the rates for all jobs, regardless of basis of charge, and dividing by last year's comparable total.

JOB	BASIS OF CHARGE	MOUNTAIN SECTION	VALLEY SECTION	STATE
-----Harvesting-----				
Corn Picking.....	Acre	\$20 00	\$19 70	\$19 80
Corn Picking and Shelling	Acre	22 60	22 60	22 60
Corn Combining	Acre	24.30	23 50	23 90
Corn Drying (23 Percent) ..	Bu	26	28	27
Combining Small Grains.	Acre	22 10	21 70	21 90
Hay Making:				
Mowing	Acre	8 00	8 30	8 20
Mowing and Conditioning	Acre	9 80	9 60	9 70
Raking	Acre	5 30	5 40	5 40
Pick-Up Baling (Twine)	Bale	31	33	32
Cut, Rake, Bale And Store.....	Bale	.84	.89	.86
Large Round Baler (Avg @ 950 Lbs)	Bale	5 90	5 70	5 80
Stacker-Wagon (Avg. @ 1 Ton).....	Stock	18.50	18 70	18 60
Silage Making:				
Pull-Type Chopper and Tractor.....	Hour	33 20	35 80	34 50
Self-Propelled Chopper.....	Hour	54 00	57 00	55 50
Blower	Hour	6 00	6 40	6 20
1 Man, 2 Wagons, 1 Tractor.....	Hour	27.50	28 80	28 20
2 Men, 2 Wagons, 2 Tractors.....	Hour	41.00	43 00	42 00
Field Chop, Haul and Fill Silo.....	Ton	6 50	5 50	6 00
-----Plowing And Cultivating-----				
Plowing, Moldboard Plow:				
Spring, Stubble	Acre	\$11.00	\$12 00	\$11 50
Sod	Acre	12.60	13.20	12 90
Fall, Stubble	Acre	11.30	12 50	11 90
Sod	Acre	13.10	13 60	13 40
Plowing, Deep (10 Inches or More).....	Acre	14.00	15.00	14 50

(Turn to Page C18)

• Agricultural • Commercial • Residential



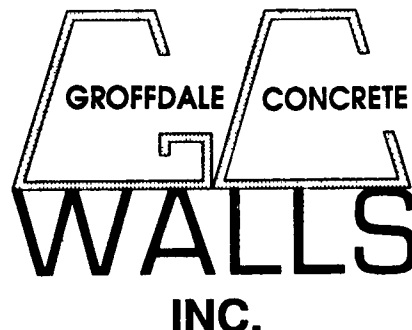
Partial In-Ground Tank Featuring Commercial Chain Link Fence (5' High - SCS Approved)

- Retaining Walls • Bunker Silos
- Manure Storage, Etc.

LET OUR EXPERIENCE WORK FOR YOU-ESTABLISHED SINCE 1979!
WE ORIGINATED THE CONCRETE SYSTEM!

Sizes And
Layouts
To Your
Specifications

We Work
Hard For
Customer
Satisfaction!



430 Concrete Ave., Leola, PA
717-656-2016

Authorized
Dealer For
KEYSTONE
CONCRETE
PRODUCTS

- H-Bunks
- J-Bunks
- Trench Silo Walls
- Hog & Cattle Slat