

**Belleville Hay**

Wednesday, May 6  
Belleville, PA  
Report Supplied by Auction  
TOTAL LOADS: 60 LOADS.  
ALFALFA: 95.00-175.00.  
MIXED HAY: 80.00-140.00.  
STRAW: 5 LOADS, 77.50-102.50.  
EAR CORN: 1 LOAD, 100.00.  
OATS: 2.30-2.90 BU.

**Greencastle Livestock**

Greencastle, Pa.  
Monday, May 4, 1992  
SLAUGHTER CATTLE RECEIPTS: 419 HD. SLAUGHTER STEERS: 120 HD. TREND: STEADY. HIGH CHOICE AND PRIME 2-4 74.00-77.00; CHOICE 2-3 95.00-107.50; CHOICE 2-3 107.50-137.50; CHOICE 2-3 OVER 137.50 LBS. 66.00-72.00; CHOICE 4 ALL WEIGHTS 65.00-70.00; SELECT & CHOICE 1-2 95.00-110.00 LBS. 64.00-70.00; SELECT & CHOICE 1-2 110.00-137.50 LBS. 62.00-67.00; SELECT & CHOICE 1-2 OVER 137.50 LBS. 60.00-66.00.  
HOLSTEINS: CHOICE 2-3 1050-1450 LBS. 64.00-69.00; SELECT 1-2 1050-1450 LBS. 57.00-63.00.  
SLAUGHTER HEIFERS: 45 HD. TREND: STEADY. CHOICE 2-3 85.00-100.00 LBS. 62.00-69.00; CHOICE 2-3 100.00-125.00 LBS. 68.00-74.00; CHOICE 4 ALL WEIGHTS 66.00-67.50; SELECT & CHOICE 1-2 850-1000 LBS. 62.00-68.00; SELECT & CHOICE 1-2 1000-1250 LBS. 64.00-69.75.  
HOLSTEINS: CHOICE 2-3 1000-1350 LBS. 61.00-65.00; SELECT & CHOICE 1-2 1000-1350 LBS. 57.00-60.00.  
SLAUGHTER BULLS: 44 HD. TREND: STEADY TO STRONGER. YIELD GRADE 1 ALL WEIGHTS 62.00-73.50; YIELD GRADE 2 ALL WEIGHTS 57.00-61.00.  
COWS: 210 HD. TREND: STEADY TO STRONGER. BREAKING UTILITY & COMMERCIAL 46.00-51.50; CUTTER & BONING UTILITY 50.00-55.50; CANNER & LOW CUTTER 49.00 & DOWN.  
STOCKER & FEEDER CATTLE RECEIPTS: 840 HD. TREND: VERY GOOD DEMAND. BEEF TYPES: 200-400 LBS. STEERS 90.00-105.00, BULLS 80.00-94.00, HEIFERS

75.00-90.00; 400-600 LBS. STEERS 80.00-89.00, BULLS 70.00-81.00, HEIFERS 70.00-81.00; 600-800 LBS. STEERS 70.00-85.00, BULLS 60.00-69.00, HEIFERS 65.00-70.00; 800-975 LBS. STEERS 64.00-72.50, BULLS 55.00-64.00, HEIFERS 60.00-66.00.  
HOLSTEINS & DAIRY CROSS: 200-400 LBS. STEERS 70.00-89.00, BULLS 70.00-81.00, HEIFERS 80.00-120.00; 400-600 LBS. STEERS 65.00-74.00, BULLS 60.00-65.00, HEIFERS 70.00-84.00; 600-800 LBS. STEERS 60.00-66.00, BULLS 50.00-59.00, HEIFERS 65.00-74.00; 800-975 LBS. STEERS 54.00-60.00, BULLS 48.00-55.50, HEIFERS 59.00-64.00.  
CALVES: 380. VEAL CALVES. TREND: 5.00 HIGHER. CHOICE 150-300 LBS. 94.00-109.00; GOOD 150-300 LBS. 80.00-93.00; GOOD 100-150 LBS. 72.00-84.00; GOOD 80-100 LBS. 80.00-85.00; STANDARD 80-100 LBS. 74.00-79.00; STANDARD 80 LBS. & DOWN 73.00 & DOWN.  
CALVES RETURNING TO THE FARM: TREND: 5.00 HIGHER. HOLSTEIN BULLS OVER 100 LBS. UP TO 187.00; UNDER 100 LBS. UP TO 185.00; HOLSTEIN HEIFERS OVER 100 LBS. UP TO 190.00; UNDER 100 LBS. UP TO 175.00; BEEF TYPE BULLS OVER 90 LBS. UP TO 180.00; BEEF TYPE HEIFERS OVER 90 LBS. UP TO 160.00.  
SHEEP & LAMBS: 101 HD. LAMBS: TREND: STEADY TO 5.00 HIGHER. CHOICE 80-100 LBS. 70.00-77.00; 100-120 LBS. 70.00-75.00; 120 AND OVER 60.00-65.00; MEDIUM & GOOD ALL WEIGHTS 55.00-65.00; LIGHT LAMBS 80.00-99.00.  
SHEEP: EWES LEAN 19.00-25.00; EWES FAT 15.00-20.00; YEARLINGS 25.00-35.00; BUCKS 17.00-21.00.  
GOATS: 69 HD. SMALL 14.00-21.00; MEDIUM 22.00-35.00; LARGE 36.00-79.00.  
HOGS, SOWS & BOARS: 100 HD, 1.00 HIGHER. HOGS, BARROWS & GILTS: 210-250 LBS. 41.00-44.00; 250-260 LBS. 41.00-42.00; 260-270 LBS. 39.00-40.00; 270-300 LBS. 36.00-37.00.  
LIGHT HOGS: 140-180 LBS. 35.00-38.00; 180-210 LBS. 36.00-40.00.  
SOWS: TREND: 1.00-2.00 HIGHER. GOOD SOWS UNDER 400 LBS. 32.00-35.00; GOOD SOWS OVER 400 LBS. 33.00-37.00; CULL SOWS ALL WEIGHTS 30.00 & DOWN.

BOARS: TREND: STEADY, 1.00 HIGHER. 180-210 LBS. 30.00-34.00; 210-260 LBS. 31.00-35.00; 260-300 LBS. 28.00-31.00; 300 LBS. & OVER 28.00-29.50.  
SALE EVERY MONDAY AT 2:00 P.M. & EVERY THURSDAY AT 1:00 P.M.

HAY & STRAW SALE EVERY MONDAY & THURSDAY AT 11:30 A.M.  
SPECIAL FEEDER CATTLE SALE: FRIDAY, JUNE 5, 1992 AT 7:15 P.M.  
SPECIAL FEEDER PIG SALE: SATURDAY, MAY 23, 1992 AT 1:00 P.M.

**Lessport Livestock**

Lessport, PA  
May 6, 1992  
CATTLE 301..(PDA).. Supply included 34 feeder cattle 119 steers and heifers ..Compared with last Wednesday's market: Sl. steers steady; Sl. cows steady to 1.00 lower. Few High Choice and Prime 1250/1350 lbs. sl. steers 75.00-76.10, Choice 1000/1450 lbs. 72.50-75.25, one at 77.00. Select 68.25-72.75, Standard 59.50-65.25. few High Choice and Prime Holsteins 1400/1565 lbs. 68.00-69.50, few Choice 1250/1500 lbs. 66.00-68.00, Select 63.00-65.00, few Standard 55.00-58.00. One Prime sl. heifer 1420 lbs. 75.25, Choice 940/1285 lbs. 70.00-72.50, few Standard 52.00-54.50. Breaking Utility and Commercial sl. cows 48.50-51.75, one 52.75, Cutter and Boning Utility 46.00-50.75, few 53.25, Canner & low Cutter 44.50-47.50, Shells down to 38.50. Few Choice Bullocks 64.25-65.50, Select 60.50-64.25, Choice Holstein 61.00-61.75, few 66.75, Select 58.50-61.25, few Standard 55.00-59.00. Yield Grade No. 1, 1125/2385 lbs. sl. bulls 59.00-62.00, few 65.25. Feeder Cattle: Few Medium and Large Frame 1, 515/715 lbs. steers 79.00-87.00, Large 2, 450/740 lbs. 64.00-69.00, few Medium and Large 1 365/580 lbs. heifers 68.00-77.00, few Large No. 2 280/320 lbs. bulls 76.00-79.00, few Medium and Large No. 1 315/525 lbs. bulls 76.00-43.00, few 570/815 lbs. 56.75-70.00, few Large No. 2 300/450 lbs. 73.00-78.00, few 800/950 lbs. 56.25-58.75.  
CALVES 139...One Choice 96.00, few Standard and Good 70/75 lbs. weaners 70.00-82.50, few Utility 60/75 lbs. 52.50-65.00. Farm Calves: No. 1, Holstein Bulls 80/120 lbs. 160.00-182.00, No. 2, 90/110 lbs. 130.00-160.00, few 125/135

lbs. 130.00-137.50, few 70/85 lbs. 77.50-97.50. No. 1 Holstein heifers 85/110 lbs. 135.00-182.50. Few Beef cross 95/150 lbs. bulls and heifers 100.00-140.00, one 205.00.

HOGS 212...BARROWS & GILTS: 2.50 to 3.00 higher. US No. 1-2 225/250 lbs. barrows and gilts 43.50-44.25, 1-3 215/270 lbs. 42.00-43.75, few 2-3 240/280 lbs. 39.00-42.00, Lot 2-4 300 lbs. 37.75, few 1-3 205/215 lbs. 41.00-41.50; SOWS: 2.00 to 3.00 higher. US No. 1-3 295/500 lbs. 34.75-36.75, 500/635 lbs. 36.50-37.75. One Boar 29.50, few lightweights at 30.00-31.00.  
FEEDER PIGS 136...US No. 1-3 25/40 lbs. 80.00-85.00, 40/75 lbs. 63.00-76.00 per hundredweight. One Lot 20 lbs. 23.00 per head.  
SHEEP 89...Choice 30/95 lbs. Spring slaughter lambs 65.00-100.00, mostly 76.00-88.00, Good and Choice 20/45 lbs. 65.00-75.00. Slaughter sheep 14.00-21.00. - all Cwt.  
GOATS 31...Couple Large 60.00-77.50, few Medium 21.00-35.00, few Small Kids 12.00-18.00, Large Kids 20.00-30.00, few 42.50. --- all per head.

CHOICE 105.00-122.50; GOOD 95.00-104.00; STANDARD 75.00-90.00.  
FARM BULLS: OVER 95 LBS. TO 191.00; UNDER 90 LBS. TO 172.50.  
FARM HEIFERS: 130.00-178.00.  
HOGS: BARROWS AND GILTS US#2-4 210-260 LBS. 39.75-42.25; OVER 270 LBS. 34.85-38.00.  
SOWS: STRONG DEMAND! OVER 450 LBS. 36.00-37.00; UNDER 450 LBS. 36.00-38.00; #2&4 ALL WEIGHTS 29.50-35.00.  
BOARS: OVER 300 LBS. 27.25-28.25. FEEDER PIGS: BY THE HEAD 20-25 LBS. 18.00-30.00, 30-40 LBS. 28.00-37.00.  
SHEEP: EWES 15.00-29.00.  
LAMBS: GOOD 70-100 LBS. 71.00-80.00.  
GOATS: BY THE HEAD SMALL/MEDIUM 19.00-46.00.  
SALE EVERY TUES. MISC. ITEMS, RABBITS, POULTRY AND EGGS 4:30 P.M., LIVESTOCK 7 P.M.  
SPECIAL FEEDER CATTLE SALE TUESDAY, MAY 12, 7:45 P.M.

**Carlisle Livestock Market**

Carlisle, Pa.  
Tuesday, May 5, 1992  
SLAUGHTER STEERS: SELECT 69.00-72.50.  
SLAUGHTER HEIFERS: SELECT 70.00-71.50; HOLSTEINS/CROSS TO 66.75.  
SLAUGHTER COWS: STRONG DEMAND! EARLYBIRD PEN FIRM 3.00-4.00 HIGHER. BREAKING UTILITY AND COMMERCIAL 50.00-54.00; CUTTER AND BONING UTILITY 48.00-54.00, 1 AT 66.50; CANNER AND LOW CUTTER 44.00-47.75, SHELLY 43.50.  
SLAUGHTER FAT BULLS: YG#1 60.75-63.50, YG#2 54.00-58.50.  
FEEDER CATTLE, FEEDER STEERS 450-950 LBS. MEDIUM AND LARGE #1 77.00-87.00; MEDIUM AND LARGE #2 71.00-76.00; HOLSTEINS 59.00-84.00.  
FEEDER HEIFERS: 675-950 LBS. MEDIUM AND LARGE #1 73.00-77.00; MEDIUM AND LARGE #2 64.00-71.00; HOLSTEINS 54.00-68.00.  
FEEDER BULLS: 750-950 LBS. HOLSTEINS 55.50-65.50.  
VEAL CALVES: VERY ACTIVE!

**Belleville Livestock**

Belleville, PA  
May 6, 1992  
CATTLE 156...Supplied by the Auction...Compared with last Wednesday's market: Breaking Utility and Commercial slaughter cows 48.10-53.00, Cutter and Boning Utility 45.25-47.10, Canner and low Cutter 43.00-44.85, Shells down to 40.00. Yield Grade No. 1 55.00-57.85. Feeder Cattle: steers 63.00-89.00, heifers 51.00-61.00.  
CALVES 95...Standard and Good calves 80.00-84.00, Utility 74.00-75.00. FARM CALVES: No. 1 Holstein Bulls 160.00-191.00. No. 2, 100.00-157.50.  
HOGS 150...US No.1-2 215/250 lbs. barrows and gilts 44.60-45.75, 1-3 190/295 lbs. 42.00-44.00. Sows: 37.00-39.00. Boars 28.00-30.00.  
FEEDER PIGS 259...US 1-3 20/35 lbs. feeder pigs 18.00-24.00, 35/60 lbs. 26.00-41.00.--- all per head.  
SHEEP 36...Choice and Prime Spring slaughter Lambs 60.00-80.00, Utility 43.00-55.00, Slaughter Ewes 15.00-30.00.--- all cwt.  
GOATS 21...Large 16.00-60.00. --- all per head.  
HOLSTEIN DAIRY COWS...\$530.00-1350.00.

**HORSE SALE**  
MAY 15, 1992  
7:00 P.M.

**PUREBRED HEIFER SALE**  
Sat., June 6  
10:00 A.M.

**NEW HOLLAND SALES STABLES INC.**  
**THE ACTION AUCTION**

LIVESTOCK IS OUR ONLY BUSINESS

**Complete Herd Dispersal**  
For Hartung-Phillipsburg, N.J.  
2 Load Canadian Cows  
All Sell Wed.  
Dairy Sale, May 13, 11:00 A.M.  
See page B38 For Complete Listing

**MONDAY**

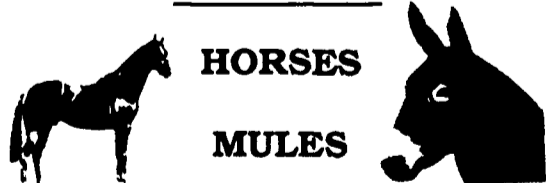
**SLAUGHTER HOGS**



**EARLY BIRD HOG SALE**  
8:00 A.M.

Sell Your Hogs At New Holland Sales Stables, Inc.  
See them weighed, sold and pickup your check.

10:00 A.M.



**HORSES**  
**MULES**

1:30 P.M.



**BEEF SALE**  
**SHEEP**  
**GOATS**  
**CALVES**

**WEDNESDAY**

**HEIFER SALE**  
11:00 A.M.  
**COW SALE 12:00 NOON**

**HEIFERS**  
**BULLS**



**DAIRY**  
**COWS**

We have the usual run of 50 to 100 Heifers, all ages.  
Loads of fresh cows and springers from our regular shippers.  
Also some local fresh cows and springers.

1:30 P.M.  
**FEEDER PIG SALE**



Pigs are accepted after 6:30 A.M. State graded from 8 to 12.  
Dairy Barn and Feeder Pig Barn are cleaned and disinfected weekly for your protection.

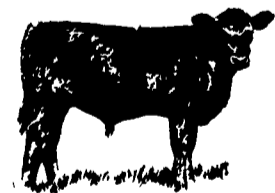
**THURSDAY**

**Beef Auction**  
10:00 A.M.

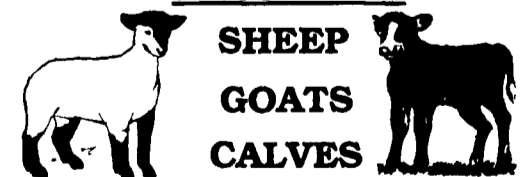
**BULLS**  
**STEERS**  
**BEEF COWS**



1:00 P.M.  
**STOCKERS**  
&  
**FEEDERS**



12:00 NOON



**SHEEP**  
**GOATS**  
**CALVES**

**NEW HOLLAND SALES STABLES, INC.**  
12 Miles East of Lancaster Off Route 23, New Holland, Penna.

**MANAGERS**  
Norman & David Kolb - 717-397-5538  
**Field Representatives**  
Luke Eberly - 215-267-6808 738-1865  
Homer Eberly - 215-267-3047  
Ron Ranck - 717-656-9849

**Sale Barn Office Manager**  
Roger Floyd - 717-354-4341  
FAX # 717-355-0706

**Order Buyer**  
Paul Good - 215-445-6662