

## Senate Ag Committee

(Continued from Page A1)  
tee, and Dale Baker, Penn State University professor of soil chemistry.

Helfrick announced that Mitchell Woodward, coordinator of the Maryland Nutrient Management Program, was directly ordered to not testify before the Pennsylvania committee by Maryland Governor William Donald Schaefer.

Woodward's testimony was seen as key, according to Helfrick, because Maryland's program is voluntary and has been held up as an example of what Pennsylvania may want to consider as a template for its own nutrient management program.

Helfrick said he was upset by the last minute news and vowed that the committee would attempt to meet with Woodward later this summer and would not release, out of committee, any nutrient management proposals until the matter was resolved and the committee was given the information needed.

"It is my intention, before doing anything with this bill, to take the committee to go to Maryland and find out what Woodward has to say," Helfrick said, sharply.

Baker, in his testimony, said that after 12 consecutive years of study on nitrogen movement in Lancaster County farmland soil, he has come to the conclusion that there is a problem with nitrogen — it is currently applied with too little bulking agent, such as is provided by straw or newspaper bedding. "The problem started with going to the liquid manure systems," he said.

According to Baker, the problem is the lack of "tilth." More specifically, he said the cellulose and lignin carbon content of the soil should be increased.

He said that the addition of more cellulose and lignin carbon acts to retain of water and thus keep water-soluble nitrogen in the soil, not in the stream or groundwater. This keeps nitrogen in the area by which plants can use it, otherwise it drains off, with the rest of water, into streams and ultimately the Chesapeake Bay.

He strongly advocated that the real solution to over-nitrification of the Bay would be for farmers to start incorporated shredded newsprint with the soil and the manure.

He said that farmers should use nitrogen and "bank" it in the soil with cellulose. He said it would provide increased crop yields and dramatically retard the flow of nitrogen into the water.

Also, he said it would alleviate, even further, the amount of cellulose and lignin carbon (newsprint) going into landfills.

## Mother's Day Special

For the 11-year-old Registered Quarter Horse at the Frysville Stables at Ephrata, mother's day this year was a 1 in 10,000 event. She had twins, a filly and a colt. Victoria Fry-Gosling who owns the stables said the pair was doing well Thursday morning when this photo was taken. Jennifer Bender owns the new three-week-old family and Simon Fry owns the stallion.

# CONTRACTS AVAILABLE -

Let Us Build A New **TURKEY HOUSE** For You With **CHORE-TIME**® Feeding Equipment

FRESH, UN-PICKED-OVER FEED to every bird because of enclosed feed tube that stays charged with feed — even between feedings. Capacity is 1,000 lbs./hour/line.

LOW ENERGY USE — less than half the power used by chain. Straight-line centerless auger delivers up to 550 feet.

SHIELD IS 15' to fully protect feed. It's attached with rivets.

ADJUSTABLE FEED level lets you maintain low level to cut waste and improve conversion. Positive adjustment can't "spin" and change.

BIG 18" PAN feeds 45 to 75 adult birds; 5 1/2" pan depth is not too deep for 8-week-old birds.

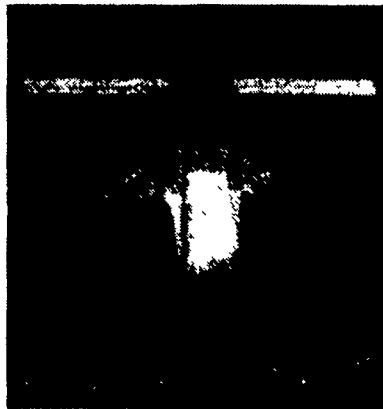
LONG-LASTING because it's designed just for turkeys: 20 ga. galvanized steel, no bolts or screws

BUILT-IN HIGH CONE distributes feed in pan, avoids build-up in tube.

FEED-SAVER FEATURES: unique "V" pan shape lets you maintain a low level; feed-saver ring; 2 1/2" pan lip to catch feed.

CONTROL PAN at end of line operates system on demand any time of day.

10-YEAR AUGER warranty: no one else comes close.

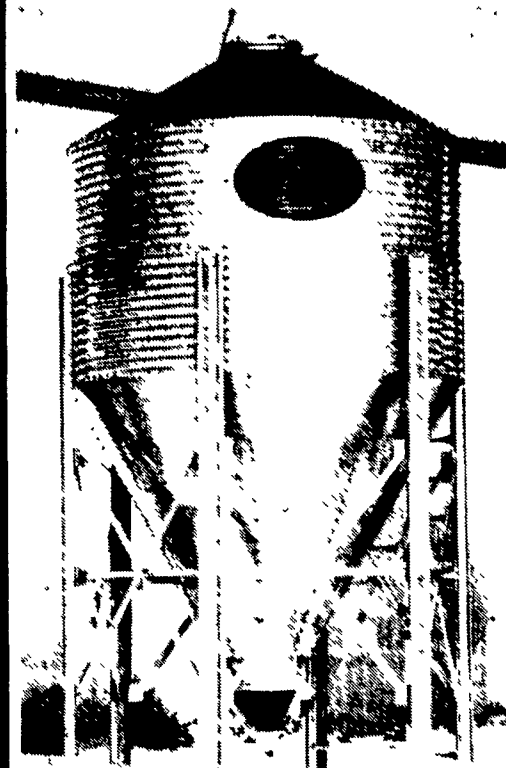


• FEED WINDOWS and Feed Gate (1) floods feeder pan with plenty of feed to attract and start poult from the first day they are put on the feeder. After birds get started, Feed Gate in "open" position (2) can be quickly put in "closed" position (3) with a simple flick-of-the-wrist. Closed Feed Gate means feeder is adjusted to low feed levels (4) for top feed conversion.

• ALL-PLASTIC FEEDER consists of 3 simple, rugged polypropylene parts (5) for permanent corrosion-proofing. Pan easily removes (6) for clean-out and hangs from feeder for drying and storage.



FLEX BOOT  
AGITATORS  
PNEUMATIC FILL KITS  
LADDERS  
AUGERS  
SLIDE VALVES  
**GSI**  
FEED BINS



We Carry The Largest Stock Of GSI Feed Bins In The Area

CONTRACTS AVAILABLE FOR NEW/UPDATED BROILER, BREEDER, PULLET, TURKEY AND LAYER HOUSES

## NORTHEAST AGRI SYSTEMS, INC.

FLYWAY BUSINESS PARK  
139 A West Airport Rd.  
Lititz, PA 17543  
(717) 569-2702  
1-800-673-2580



STORE HOURS:  
Mon.-Fri.  
7:30-4:30

FOR YOUR REMODELING NEEDS WATERING FEEDING OR VENTILATION EQUIPMENT CALL US



automatic farm systems

608 Evergreen Rd.  
Lebanon, PA 17042  
(717) 274-5333