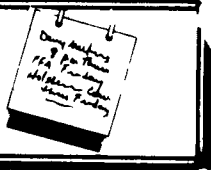


Farm Calendar



(Continued from Page A10)

Rural Issues Forum, Mansfield University, Mansfield.

Lancaster County Honey Producers meeting, Norman Landis, Lancaster, 6:30 p.m.

Friday, May 22

Saturday, May 23

Northwest Jr. Beef Classic Show, thru May 24.

Sunday, May 24

Monday, May 25

Memorial Day

Clearfield Co. Open Horse Show, Luthersburg.

Tuesday, May 26

Wednesday, May 27

Roadside Market Workshop, Wayne Co. extension office, Honesdale, 10 a.m.-3 p.m.

Thursday, May 28

Friday, May 29

Wyoming/Lackawanna Dairy Princess Pageant, Lake View Lounge, Heart Lake, Jermyn, 7:30 p.m.

Clinton County Dairy Princess Pageant, Nittany Grange Hall, Lamar, 8 p.m.

Saturday, May 30

Eastern Regional Emu Chapter Seminar, Eden Resort Hotel, Lancaster, 9 a.m.

Open Western Horse Show, Fair Hill Grounds, 9 a.m.

Wayne County Dairy Princess Pageant, Belmont Fire Hall, Pleasant Mount, 7:45 p.m.

Sunday, May 31

Monday, June 1

Tuesday, June 2

Wednesday, June 3

Thursday, June 4

Friday, June 5

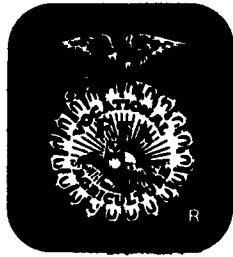
Delmarva Chicken Festival and Chicken Cooking Contest,

Salisbury, Md., thru June 7. World Pork Expo, Iowa State Fairgrounds, Des Moines, thru June 7.

Saturday, June 6

Junior Livestock Day, Penn State Meats Laboratory, 7 p.m.-9 p.m.

Maryland and Open English Horse Show, Hopewell Training Center, 9 a.m.



Grassland FFA Wins Conservation Award

The Grassland FFA at Garden Spot High School was recognized by the Pennsylvania Federation of Sportsmen's Clubs as winner of the prestigious John F. Laudadio Award.

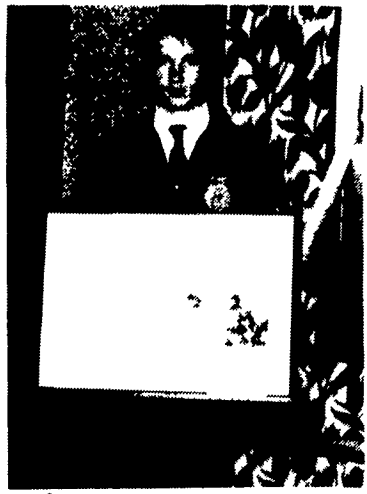
The award was based upon the chapter's prolonged commitment to conservation efforts in Pennsylvania. Among the highlights of the Grassland FFA's involvement

over the past 10 years:

- Envirothon Competition at the state level 1983 - 1st place.

- FFA Building Our American Communities (BOAC) competition at the state level in 1981 - 1st; 1983 - 2nd; 1984 - 2nd; 1986 - 1st; 1988 - 5th; 1990 - 1st and eastern regional national gold medal winners in 1986 and 1990.

- Involvement in Lancaster County Youth Conservation School. Since its inception, an average of 4-5 students participate as campers annually. Approximately half of the volunteer counseling staff have been made up of graduates of the Grassland FFA.



Jason Reifsnnyder, president of the Grassland FFA, accepts the John F. Laudadio Award on behalf of the FFA Chapter.

ROLLING ON...IN THE 90's

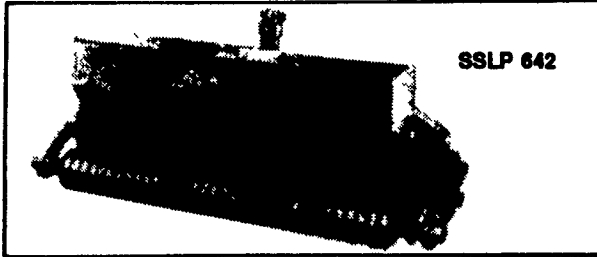


MEETS THE CHALLENGE

For Built In Strength Where It Counts - Buy Brillion

Brillion LANDSCAPE SEEDERS

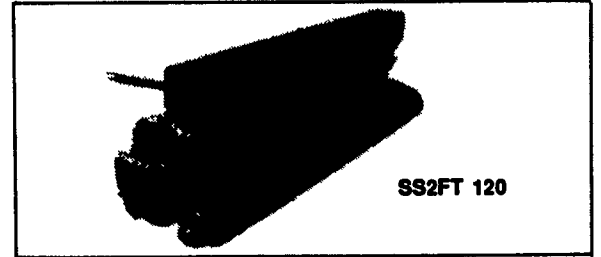
crush clods, deposit and cover the seeds in one operation.



Seeds are precisely deposited in the top 1/4" of a firm clod-free seedbed. This labor-saving 5'4" model is extremely maneuverable for working close to buildings and fences. Stop in and ask about Brillion's 5'4" Landscape Seeder or the new 8' Model.

Brillion TURF-MAKER

is the ideal seeder for professional landscapers, turf and sod raisers.



Crush clods, deposit and cover the seeds in one operation. Get thick, even stands of grass, consistently, with savings of up to 50%. Stop in and ask about Brillion's 10' Turf-Maker.

PENNSYLVANIA

Adamstown
ADAMSTOWN
EQUIP. INC.

Bechtelsville
MILLER
EQUIP. CO.

Berwick
C.H. RINEHIMER
& SONS

Dover
GEORGE N.
GROSS, INC.

Easton
GEORGE V.
SEIPLE

Elizabethtown
MESSICK FARM
EQUIPMENT CO.

Gettysburg
YINGLING
IMPLEMENT

Intercourse
C.B. HOOBER
& SON

Lancaster
LANDIS
BROTHERS, INC.

Lebanon
UMBERGER'S
OF FONTANA

Maxatawny
N.H. FLICKER &
SONS, INC.

Needmore
CLUGSTON
FARM EQUIPMENT

New Holland
A.B.C. GROFF, INC.

Oley
PIKEVILLE
EQUIPMENT, INC.

Quarryville
GRUMELLI FARM
SERVICE

Somerset
SUMMIT
MACHINERY, INC.

Tamaqua
CHARLES
SNYDER, INC.

Watsonstown
DEERFIELD AG &
TURF CENTER, INC.

West Grove
S.G. LEWIS &
SON, INC.

MARYLAND

Rising Sun
AG INDUSTRIAL
EQUIPMENT

Frederick
CERESVILLE FORD
NEW HOLLAND

NEW JERSEY

Bridgeton
LESLIE FOGG

Columbus
REED BROTHERS
EQUIPMENT

Elmer
POLE TAVERN
EQUIP.
SALES CORP

Fairfield
CALDWELL
TRACTOR &
EQUIPMENT

CONTACT YOUR BRILLION DEALER FOR DETAILS

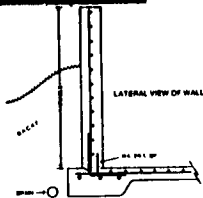
Manure management systems to match your kind of livestock, type of manure ...and economics

"PLAN NOW for 1992 Construction"



POURED IN PLACE CONCRETE TANKS

- * 6'-8' or 12' depth
- * 50' thru 140' diameters
- * Inground or above ground



Sollenberger Silos Corp.

A Nitterhouse Company
Box N Chambersburg, PA 17201 (717) 264-9544

SINCE BEFORE 1910

Office Number - 717-264-9588

For Upright Silos Call
Bob Francis

717-532-8848 Evenings

For Bunker Silos & Manure Systems

Call Tabb Justus or Mike Hair
717-762-8863 717-263-0792

31ST ANNUAL

Penn View Christian School

Country Auction

Chicken Barbecue

Friday, May 15, 4 PM - 9 PM Saturday, May 16, 6 AM - 4 PM
at Christopher Dock Mennonite High School 1000 Forty Foot Road, Lansdale, PA

Fresh Strawberry Pies

Donuts, Breads, Sausage Sandwiches, Funnel Cakes, Waffles and Ice Cream
Many Unique Food Items & Quality Craft Items Antiques (Sat. only - weather permitting)

Pancake or French
Toast Breakfast
Saturday 6 AM

Quilt Auction
Saturday 1 PM



Chicken Barbecue
Friday 4-9 PM
Saturday 11 AM-4 PM
(Drive-Thru, Fri. 4-7 pm)

General Auction
Saturday 9 AM

Proceeds Benefit Penn View Christian School For More Information Call (215) 723-1196

A1974-1987 Donated by The Creative Network 256-9365