

'87 Ford F150 Super Cab, 300 EFI, 3 spd. overdrive, PS, PB, AM-FM, dual tanks, 6,250 GVW, 36,000 miles, blue & white, excellent condition, \$6,950 717-733-2873

'88 Chevy Cheyenne 2500, 3/4 ton, 4x4, 350 Fl., auto, PB, PS, air, AM-FM cassette, 44,000 miles, black, excellent condition. 717-733-2873

20' Morgan truck body, good condition. Good storage unit, 717/949-6844.

22' 1988 Kidren Reefer Box, 96Wx90H, 3" insulation, rear roll door, \$5500. 717/933-4860.

(2) 40' storage trailers \$1200/ea; Mack '81 300 5 speed, Power steering, AC; '75 R model Mack, 237 5 speed; '78 R model Mack 237 5 speed 1-800-782-0528.

'71 GMC 6500 series, 366 engine, 5+2, 23,000# rear, truck in excellent running condition. 2500 gallon tank w/4" discharge on rear. (814)629-6049 evenings. Somerset Co.

'75 IH Fleetstar 1700, 392 gas engine, air brakes & trailer plate, body & engine good condition, good cattle trailer truck, 814/349-8054.

'76 Chevy stake dump, excellent condition, must sell, small operation. 215-536-8624.

1981 Ford 800, 429 gas, 32,000 GVW, 5+2, air brakes, PS; 1979 Ford 800, 429 gas, 32,000 GVW, 5+2, PS, air brakes. 301-877-9889.

1981 Ford Model-150 pickup, 6 cylinder, straight shift, good condition, \$1100. 717/786-2839

1983 GMC Brigidere w/240 Cummins, 7 speed trans, 33200 GVW, w/20' ref. body, hyd. rail type lift gate, good condition, 20,000 miles on complete overhaul. 717-648-7994.

'86 GMC 3500 dual whl. w/9' Omaha standard stake body, 350, auto, PS, PB, AM-FM, dual tanks, 10,000 GVW, 66,000 miles, excellent condition, \$6,950. 717-733-2873

'87 Chevy C10, 1/2 ton, 4x4, 305 Fl., auto, PB, PS, AM-FM, 6,250 GVW, rally whls., red & white, excellent condition, \$8,975. 717-733-2873

'87 Chevy C20, HD, 3/4 ton, 350 Fl, auto, PB, PS, air, AM-FM, dual tanks, 8,600 GVW, red, 36,000 miles, \$6,950. 717-733-2873

One Owner
1984 Peterbilt
Conv. 3406B Cat
400 HP w/50,000
mile warranty,
355 Eaton Rears,
24.5 LP Air Ride,
13 Speed, Fuller
Trans.
\$20,000
717/532-3933

MOTORS
New & Rebuilt
350, 366,
427, 454
6.2 Diesels
Rebuilt & Used
Will Install
Roll Back Service
(at cost)
717-762-6415



1990 Ford E350 XLT 15 pass., FI 460, ATO, PW, PL, Tilt, Cruise, Privacy Glass, Dual AC & Heat, 41,000 Miles \$13,600



1990 Ford E250 XLT, 8 Pass, FI460, ATO, PW, PL, Tilt, Cruise, Privacy Glass, Dual AC & Heat, 57,000 Miles \$10,800



1988 Dodge B350 LE 15 Pass., 360, AT, PW, PL, Tilt, Cruise, Privacy Glass, Dual AC & Heat, 48,000 Miles \$9,800



1990 Chevy G30 Cargo FI 350, AT, PS, PB, 8,600 GVW, 25,000 Miles \$9,800



1989 Chevy G20 Beauville 8 Pass., 305, ATO, PW, PL, Tilt, Cruise, Privacy Glass, Dual AC, 25,000 Miles \$10,900



1989 Suburban K2500 4x4, FI 350, AT, PW, PL, Tilt, Cruise, Privacy Glass, Dual AC, All Seats 3:73 Rear, 41,000 Miles \$14,500



1990 Chevy P30 18' Gruman Step Van, Dual Wheel, 10,000 GVW, 350, AT, PS, PB, 24,000 Miles \$12,900

717-354-3199

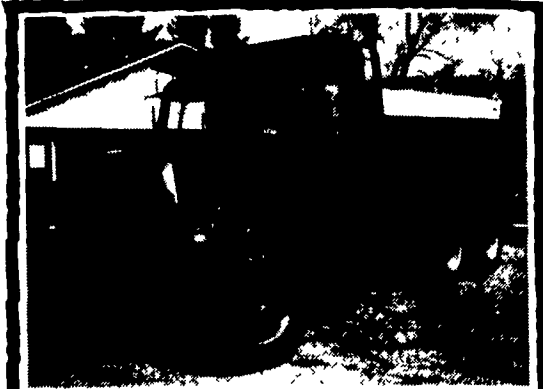
HORSE STOCK UTILITY CARGO STEEL and ALUMINUM FINANCING NOW AVAILABLE

STOCK - \$1695 and up
HORSE - \$2750 2-horse w/tack space, feed door, T-divider
ALUMINUM - \$3600 and up
SPECIALS - 2-Horse and 4 horse \$850 - \$1000
5-Horse GN alum. stock '91 Dress room, rear tack \$7800
Stock Bp 6x16 El Paso 1992 special \$2550
Utility 16' Bp w/rails 1-brake \$1150
2-brake - \$1300

FISHER RD #2 McVeytown, Pa. 17051
TRAILER SALES Strodes Mills Middle Rd.
(717) 242-0941



'73 Dodge Motorhome
Good Condition
\$2,900
(215) 458-0400



1987 Ford LN 800
AC, New 7.8 Liter Ford Diesel, 240 HP, 13 Speed, 44,000 Lb. Rears, 14' Steel Dump
\$28,000.00
(215) 285-2747



77 GMC Tandem Dump
14,000 Miles On Factory, Remanufactured 3208 Cat, Motor, New Clutch, Rebrushed Rears, New Batteries, New Starter, Many Other New Parts. Truck Is In Excellent Condition
\$13,000 OBO
Call (814) 542-3333 Evenings

JONES



The GMC GIANT of Lancaster County

(717) 394-0711

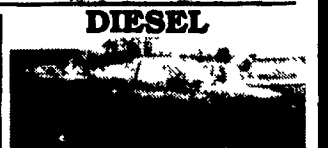
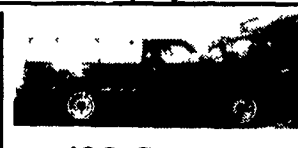
OVER 120 TRUCKS AVAILABLE!

1335 Manheim Pike, Lancaster (Next To Landis Bros. John Deere)

All Of Our Trucks Are PA State Inspected And Ready To Go!
We Love DIESELS!



NEW DIESELS IN STOCK
#2848 - Ex. Cab, 4x4, 1/2 Ton, Short Bed, 6.2 Liter, Sierra Classic
#2918 - Ex. Cab, 4x4, 1/2 Ton, Long Bed, 6.2 Liter, Sierra Classic
#2919 - Reg. Cab, 1/2 Ton, 4x4, 6.5 Turbo, Sierra Classic
#2920 - Reg. Cab, 2WD, 1/2 Ton, 6.5 Turbo, Sierra Classic
#2863 - Ex. Cab, 1/2 Ton, 6.2 Liter, Sierra Classic
#2545 - 1 Ton, Dually, 2WD, 6.5 Turbo, Sierra Classic



* Includes Applicable Factory Rebates