

HARDWOOD FIRE WOOD

Chunks, No Bark Or Dirt
Will Deliver Truckload
Quantities Only
**717-658-2425 Office or
717-658-6238 Res.**
Call For Special Price

**PAINTED STEEL
ROOFING
& SIDING**

Galvanized/Galvalume
29/26 Gauge
3 Major Brands Available
Large Stock Trim & Sheet
5V Crimp Metal

**AS LOW AS
\$32⁰⁰ per/sq.**

**Conestoga
Building Supply**
New Holland, PA 17857
717-354-2613 or
1-800-544-9484

**Homespade
Yarn For Sale**

All Types Of Fibers
- Very Reasonably
Priced. Also -
Custom Made
Sweaters-
Traditional
Icelandic Styles.
Spun Of Your
Choice...Even Your
Own Pet's Hair
(Dog or Cat)
Call
(717) 355-9312

**33 RECREATIONAL
VEHICLES**

16' Malibu fiberglass bass
boat, capacity 8 people,
like new, Johnson 28 HP
motor, like new; Harding
boat trailer, used very little;
Yamaha gas golf cart, 4
wheels, perfect condition
\$1400. 215-869-9505.

1987 31' Southwind Motor-
home- Basement
16,000mi. 2airs, generator,
T.V., awning, excellent
condition, 717-675-4553.

'74 Larson boat, 18', open
bow, 115 HP new motor,
skis, new trailer, extras,
garage kept, nice condition
\$4500. 717-273-6018.

Allegro Class A motor-
home, 33', basement
model. Completely self-
contained \$34,999.99
412-397-4385.

Snowmobile, Bolens 440
sprnt, runs good track \$75.
215-268-2841.

**35 TRUCKS &
TRAILERS**

16' Tag-Along trailer, good
condition, licensed at
5-ton, \$1450 OBO.
215/445-6402 Lanc.Co.

1954 Ford F-350 Dump
Truck, 292V8 Inspected
\$1000.00; 1967 Chevy Van
6Cyl 3-Speed \$250.00,
215-346-8931.



1981 S1854 INT. DT466

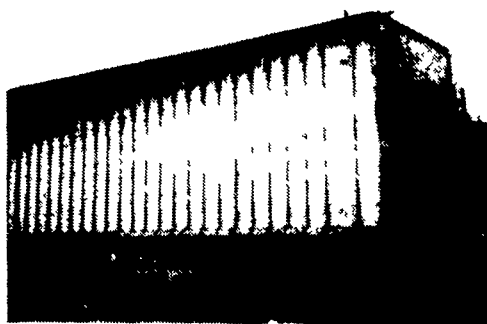
5 & 2 With 24 Ft. Danco Rollback, Less Than
One Year Old, Good Condition
\$14,200.00 OBO
215-445-6024

'88 Dodge Dakota LE, 4x4,
3.9 V6, auto., PS, PB, PW,
PDL, cruise, tilt, air w/
fiberglass topper, red &
charcoal, 46,000 miles,
excellent condition,
\$8,975. 717-733-2873

'89 Dodge D250 3/4 ton,
4x4, 318, auto., PS, PB,
AM-FM, 7,500 GVW, dark
blue, 46,000 miles, excel-
lent condition, \$8,975.
717-733-2873

1978 Ford 700 truck and
chasis, \$1500. 1986
16,000# tagalong trailer,
electric brakes, \$1900.
215/286-6166.

1980 Freightliner conven-
tional, 210 wheel base,
spring suspension, 13
speed, 400BC Cummins
motor, approx. 65,000
miles on overhaul, \$13,500
OBO. Call Eves after 6PM
215-326-2396.

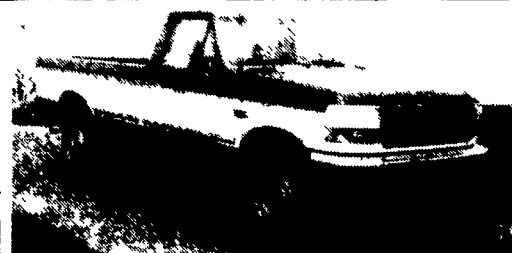


1 - 1977 Great Dane Trl.
42 Ft. 24.5 Tires With Walking Floor
\$19,000.00
717-438-3354

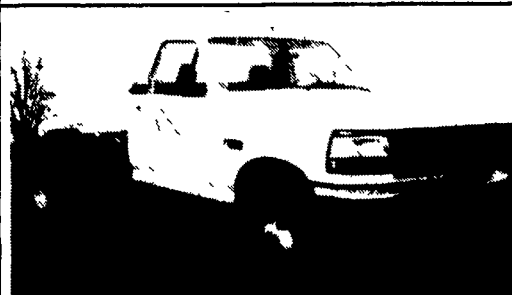
NEW DIESEL TRUCKS



1992 F250 Supercab 4x4 Diesel
7.3L Diesel Electronic Auto OD, 4.10 Rear XLT
PW, PL, Air, Speed Control, Trailer Towing #7194
& 2972. 2 To Choose From!



1992 F250 4x4 Diesel
7.3L Diesel Electronic Auto OD, XLT, Trailer Tow-
ing, Air & More #9374



1992 F350 Chassis Cab 4x4 Diesel
137" WB 7.3L Diesel 5 Spd OD, 4.10 Rear Air,
White #6690



1992 F350 Crew Cab Diesel
Dual Rear Wheel XLT 7.3L Diesel, Electronic
Automatic OD, Air, PW, PL, 4.10 Limited Slip Rear
Trailer Towing & More #0886



1992 F350 Crew Cab 4x4 Diesel
XLT 7.3L Diesel, Electronic Auto OD Trans., Air,
PW, PL, Speed Control, Cassette #2735



KELLER BROS.

Since 1921

On Rt. 419 Between
Cornwall And Schaefferstown
Mon. Thru Fri. 9 to 9; Sat. 9 to 4
717-949-2000

1969 GMC 550 V6 26,000
GVW 4+2 Grain Dump
Steel Floor \$4500.00,
Northampton County,
215-252-2410.

1973 Ford V8 Cattle Truck
w/12' cattle body, \$1995.
STUMP ACRES
717/792-3216 York Co.

1978 Chevy Pickup Cust-
om Deluxe 30 Series, 350
automatic. 1972 Jeep
Commando 4 wheel drive,
good drive trane.
717/648-6490.

1983 Tracer 3 Horse
Gooseneck Trailer, 8ft. liv-
ing quarters, tack area,
under manger storage,
rough rack, new brakes
and tires, excellent condi-
tion, black and gray
\$8500.00, 717-697-6311.

1985 Chevrolet C30 12' flat
dump, new floor, new
paint. 1991 Stow Hudson
trailer, 16', 2axle, used
very little. 410/343-1684.

1985 Ford 8' pickup bed,
excellent condition, no rust,
complete w/wiring har-
ness, all lights and mount-
ing hardware. Dark blue.
\$650. Northern Chester
County. (215)469-6913.

**E-TOWN
DODGE**

(8) 4WD, Diesel
Pickups, In
Stock Ready
For Delivery

1975 Ford Dump
31,000 GVW

1989 Ford F-150
Super Cab 4x4
XLT Lariat

Club Cab Diesels
Are Here

CALL
MILTON HESS
717-367-6644
717-653-6667
Elizabethtown, PA

1986 Gooseneck Flatbed,
24ft. Dovetail with Three
Ramps, 8000lb. Axles, Ex-
cellent Condition, \$3,500.,
717-839-9841.

'89 Ford F350, dual whl.,
super cab, 7.3 diesel w/9'
Reading utility body, auto.,
PB, PS, dual tanks, 10,000
GVW, excellent condition,
\$13,500. 717-733-2873

**HOSTETLER
TRUCK CLEARANCE**



1975 Ford F600 Grain Truck, V8 Gas Engine,
5 & 2 Speed Transmission, 21,000 # GVW,
New Knapheide 14' Grain Body With 40"
Steel Grain Sides, New Harsh R1, B10
Scissor Holst, Body and Holst Sell For
\$5,000 Alone, Was Priced \$7,550
NOW MUST SELL \$6,995



1974 International Cab Over Grain Truck, Cat
Diesel, 5 Speed, 26000 # GVW, 14' Grain
Body With 40" Steel Grain Sides and Holst.
Was \$5,770. Then Dropped To \$4,995,
Now We Are Listening To Reasonable Offers.

Other Trucks In Stock

1979 International S1600, 345 V8 Gas
Engine, 4 Speed, Only 34,000 Original
Miles, 20,000 # GVW, New 14' Knapheide
Grain Body and Sides with Double Acting
Tailgate, New Knapheide Holst..... \$9,400
1981 International S1700 Cab and Chassis,
V8 Gas, 4 & 2 Speed, Recent Rebuild On
Engine..... \$3,995
Other Trucks In Stock Call For Complete List
And Details



**Hostetler Truck
Bodies & Trailers**
Rt. 322 Milroy, PA 17063
(717) 667-3921

USED FEED TRAILERS!

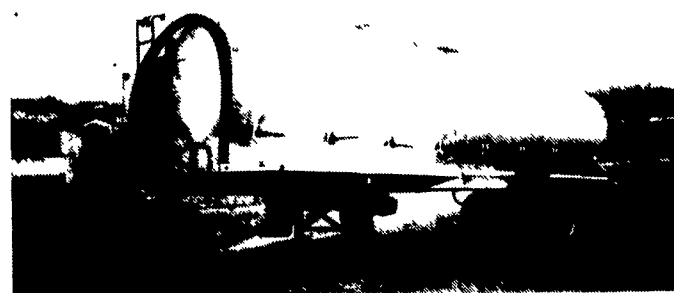
CLARK 32' FEED TRAILER



8 Compartment, 40 cubes per ft., 1,280
Total cubes, 1100 R 20 tires, 2 speed
landing gear, Auger base, Pull gates,
Wallinga type hydraulic controls, Air
unload only, Sealed light system

**AS IS IN RUNNING
CONDITION
\$5,500**

FONTAINE 32' FEED TRAILER



8 compartment, 44 cubes per ft., 1,408
total cubes, Reyco suspension, 2 speed
landing gear, 275/80R 22.5 tires 50% or
better tread, Air delivery, Drop gates,
New Style Wallinga hydraulics, 4 tube
hose storage, Direct drive airlock,
Spare tire carrier.

**AS IS IN RUNNING
CONDITION
\$7,500**



SALES & SERVICE, INC.
EASTERN MOBILE MILLS

1248 E. Newport Rd.,
Lititz, PA 17543
Phone: (717) 626-4762

Toll Free Nationwide:
1-800-286-2081
Fax No.: (717) 626-0320