

# Virginia Cattle & Hogs

## Virginia Weekly

Richmond, Va.

Wednesday, April 29, 1992

WEEKLY REVIEW IN VIRGINIA REVIEW OF VIRGINIA DIRECT HOGS FOR THE PERIOD APRIL 23-29 1992. RECEIPTS FOR COUNTRY BUYING STATIONS IN VIRGINIA FOR THE PERIOD TOTALED 1824 HEAD. RECEIPTS FOR DELIVERY TO THE PLANT (WITHIN A 30 MILE RADIUS) FOR THE PERIOD TOTALED 3989 HEAD.

THE VIRGINIA DIRECT HOG MARKET FOR WEDNESDAY APRIL 29, 1992 CLOSED STEADY TO MOSTLY \$1.00 HIGHER COMPARED TO LAST WEDNESDAY'S TRADING.

BARROWS AND GILTS: VIRGINIA COUNTRY POINTS U.S. 1-3 220-250 LBS 39.00-42.50 LOCAL PLANT DELIVERED (30 MILE RADIUS) US 1-2 220-250 LBS. 40.00-41.00 US 2-3 220-250 LBS. 37.00-40.00 US 1-3 200-210 LBS. 36.00-37.00 US 1-3 210-220 LBS. 38.00-39.00 US 2-4 250-260 LBS. 37.00-38.00 US 2-4 260-270 LBS. 35.00-36.00 US 3-4 270-280 LBS. 33.00-34.00 US 3-4 280-300 LBS. 31.00-32.00. SLAUGHTER STEERS AND HEIFERS 0%; SLAUGHTER COWS 09%

SLAUGHTER BULLS 1%, SLAUGHTER CALVES AND VEALERS 0%; FEEDER CATTLE UNDER 600 LBS 73%, OVER 600 LBS 17%.

PRICE RANGES FOR VIRGINIA WEEKLY AUCTIONS: SLAUGHTER CATTLE STEERS: CHOICE 2-3 900-1100 LBS ---- CHOICE 2-3 1150-1300 LBS ---- CHOICE 2-3 1300 LBS & OVER ---- HEIFERS: CHOICE 2-3 900-1100 LBS ---- CHOICE 2-3 1100 LBS & OVER ---- SLAUGHTER COWS UTILITY & COMMERCIAL COWS 44.00-57.00.

SLAUGHTER BULLS 1-2 900-1300 LBS 55.00-64.00 1-2 1300-1600 LBS 54.00-68.00 1-2 1600 LBS & OVER 57.50-66.00 SLAUGHTER CALVES AND VEALERS VEALERS - HIGH CHOICE & PRIME 200-350 LBS --- GOOD AND CHOICE 200-350 LBS --- CALVES - GOOD AND CHOICE 250-500 LBS 73.00-79.00 SLAUGHTER LAMBS HIGH CHOICE & PRIME 95-125 LBS SPRING 70.00-75.00 HIGH CHOICE & PRIME 95-125 LBS WOOL 66.00 SLAUGHTER HOGS US 1-3 200-250 LBS 34.75 SOWS US 1-3 300-500 LBS 27.00-34.00 500 LBS & OVER 29.25-34.50.

FEEDER CATTLE STEERS: MEDIUM 1 HEIFERS: MEDIUM 1 200-300 LBS 92.00-106.00 300-400 79.00-99.00 300-400 89.50-103.50 400-500 73.00-86.00 400-500 84.00-98.00 500-600 70.00-82.00 500-600 78.00-95.00 600-700 67.50-73.00 600-700 74.50-95.00 700-800 65.00-68.50 700-800 70.00-80.00 800-900 61.00-68.00 800-900.

## Northern Virginia Livestock Summary

Orange, Va.

Wednesday, April 29, 1992

ALL TRENDS COMPARED TO LAST WEDNESDAY SLAUGHTER HOGS 15 HEAD - NO TRENDS REPORTED. BARROWS AND GILTS US 1-3 200-250 LBS 35.75 US 2-4 250-300 LBS 31.00-35.00 SOWS US 1-3 300-500 LBS 34.00.

SLAUGHTER CATTLE 75 HEAD - NO TRENDS REPORTED. SLAUGHTER STEERS AND HEIFERS 18 HEAD STEERS; SELECT 2-3 1100-1500 LBS 61.00-64.00.

HEIFERS; STANDARD 1-3 850-1100 LBS 51.00-55.00.

SLAUGHTER COWS 51 HEAD CUTTER & BNG.UT. 1-3 43.00-49.00 BRKG.UT. & COMM. 2-4 45.00-49.00 CANNER & LOW CUTTER 1-2 39.00-45.00.

SLAUGHTER BULLS 6 HEAD 1-2 900-1300 LBS --- 1-2 1300-1600 LBS 58.00-62.00 1-2 1600 LBS & OVER 58.00-62.75.

TOTAL LAMBS 35 HEAD - NO TRENDS REPORTED. SLAUGHTER LAMBS 35 HEAD SPRING HIGH CHOICE AND PRIME 95-125 LBS 70.00 WOOLED CHOICE 85-125 LBS 68.00.

FEEDER CATTLE 200 HEAD - NO TRENDS REPORTED. STEERS; MEDIUM 1 LARGE 1 300-400 88.00-94.00 88.00-94.00 400-500 87.00-94.00 87.00-94.00 500-600 85.00-89.00 85.00-89.00 600-700 74.00-77.00 74.00-77.00 700-800 65.00-68.00 65.00-68.00 800-900 65.00-68.00 65.00-68.00

HEIFERS; MEDIUM 1 LARGE 1 300-400 73.00-79.00 73.00-79.00 400-500 69.00-75.00 69.00-75.00 500-600 65.00-69.00 65.00-69.00 FEEDER BULLS; MED. 1 LARGE 1 300-400 LBS 77.00-80.00 77.00-80.00 400-500 LBS 78.00-83.00 78.00-83.00 500-600 LBS 75.00-79.00 75.00-79.00 600-700 LBS 65.00-69.00 65.00-69.00.

## Central & Southeast Virginia Livestock Summary

Southside (Blackstone), Va.

Wednesday, April 29, 1992

(SMITHFIELD NOT AVAILABLE) ALL TRENDS COMPARED TO LAST WEDNESDAY SLAUGHTER CATTLE 41 HEAD - SLAUGHTER COWS \$1.00-2.00 HIGHER. SLAUGHTER BULLS STEADY.

SLAUGHTER COWS 37 HEAD CUTTER & BNG.UT. 1-3 45.00-52.00 BRKG.UT. & COMM. 2-4 48.00-55.00 CANNER & LOW CUTTER 1-2 41.00-44.75.

SLAUGHTER BULLS 4 HEAD - 1-2 900-1300 LBS 62.00 1-2 1300-1600 LBS 62.75 1-2 1600 LBS & OVER 67.75-68.00.

FEEDER CATTLE 236 HEAD - FEEDER STEERS AND FEEDER HEIFERS STEADY TO \$2.00 HIGHER. FEEDER BULLS STEADY TO \$3.00 LOWER. STEERS; MEDIUM 1 LARGE 1 SMALL 1 300-400 91.50-97.00 --- 85.00-91.00 400-500 84.00-91.00 88.00-93.00 --- 500-600 --- 79.00-86.00 --- 700-800 69.50-73.50 --- ---

HEIFERS; MEDIUM 1 LARGE 1 SMALL 1 MED.&LARGE 2 200-300 82.00-87.50 82.00-87.50 --- --- 300-400 80.00-82.00 80.00-82.00 67.00-71.50 --- 400-500 77.00-84.00 77.00-84.00 66.00-75.00 72.00-78.00 500-600 72.00-73.00 72.00-73.00 --- 69.50-72.00 FEEDER BULLS; MED. 1 LARGE 1 SMALL 1 MED.&LARGE 2 200-300 LBS 100.00-115.00 --- 88.00-94.00 --- 300-400 LBS 86.50-95.50 --- 81.50-86.00 82.50-89.00 400-500 LBS 78.00-81.00 79.50-89.50 75.00 74.50-75.00 500-600 LBS 73.50-74.00 --- --- 70.00-72.50 600-700 LBS --- 66.50-67.00 --- --- COWS RETURNED TO FARMS 9 HEAD - M&L-1, 3-6 YRS OLD 950-1175 LBS \$47.00-54.25 PER CWT; M&L-2, 3-8 YRS OLD 700-950 LBS \$47.00-53.75 PER CWT. BABY CALVES RETURNED TO FARMS 8 HEAD NEWBORN TO 4 WKS \$115.00-125.00 PER HEAD. OVER 100 LBS \$124.00-135.00 PER CWT.



Notice Of Time Change (Hay Sale) Starting Jan. 1, 1992 (New Year's Day)

Hay And Straw Sales Will Start At 10 A.M. Every Wed.

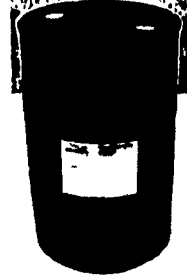
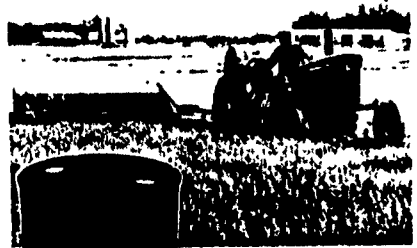
GOOD'S AUCTION  
111 North Maple Ave.  
Leola, PA 17540  
717-656-8911  
717-656-9554

**AG LIME**  
SPREADING - SALES  
TOP QUALITY  
Hi-Cal or Hi-Mag dry Lime from Martin Limestone  
SAVE DEALER MARK-UP COSTS  
Payment At Time Of Delivery  
**CONESTOGA VALLEY ENTERPRISES**  
717-394-0208 OR 1-800-724-3277  
Serving Pennsylvania, Maryland, Delaware

**PARADISE CONCRETE**  
METERED DELIVERY!  
You can't over or under order! Guaranteed Savings! Variable Pricing!  
DEFINITELY CALL US BEFORE YOU BUY!  
Delivery When You Need It! Large And Small Trucks  
**717-687-0990**  
Dedicated To The Farm Community  
Mitch White  
Eric R. Probst

## SWATHER'S CHOICE

ALFALFA HAY CONDITIONER



LIQUID CHEMICAL HAY CONDITIONER FOR DRYING ALFALFA HAY IN 1/3 LESS TIME

Alfalfa and other legume crops have a coating of wax. While this coating is a natural protection for the growing plant, it is an inhibitor to moisture loss in field curing and to feed utilization in the digestive system of ruminant animals. The presence of this coating of wax also makes the hay stem brittle and less palatable to livestock.

Swather's Choice "washes off" the outside waxy coating of alfalfa, allowing for the water inside the plant to evaporate more rapidly than in untreated hay. Swather's Choice is actually a soap that is safe for livestock consumption and won't affect palatability.

In studies at Michigan State University, hay treated with the ingredients in Swather's Choice had higher protein and lower fiber. In a further study at Utah State University, cows consumed 2.2 pounds more treated hay per day.

Unlike conventional granular drying agents, Swather's Choice is a liquid chemical hay conditioner. It is easily tank mixed with water and requires only fifteen gallons per acre in most applications, compared with the conventional products that are normally applied at 30 gallons per acre.

AVAILABLE FROM: **DAVID O FINK**  
(215) 767-1408

**ATTENTION - CATTLE FEEDERS**  
**SPECIAL GRADED FEEDER CATTLE SALE**  
Friday, May 8, 1992  
200 Head, One Owner Adams Co.,  
Blacks & Black White Faced  
Approximately 100 Steers & 100 Heifers  
Weighing 750 to 950 Lbs., Real Attractive  
250 Other Cattle  
**Walter M. Dunlap and Sons**  
Lancaster Stockyards Tel. (717) 397-5136  
An Old Line Commission Firm Keeping Abreast With The Times

**FFA**

Replace Your Bulbs - Save Electricity  
**FLUORESCENT LIGHTS**  
Save Energy Replaces up to 75 watt incandescent  
Easy Installation  
Economic Lasts 10 times longer than standard bulb  
Fewer Lamp Changes  
Lower Maintenance Cost  
Durable Polycarbonate Housing  
45,000+ Hour Ballast  
10,000+ Hour Lamp Life  
Air Cooled  
Water Resistant Ballast  
120 Volt  
Ratcheted Brass Socket  
Medium Base  
Starting Temperatures 0  
Made in USA  
**PRICES AS LOW AS \$6.99 NOW \$5.95**  
Listed  

MODEL	WATTS	INCANDESCENT EQUIVALENT	INITIAL LUMENS
3000	5	25 WATTS	250
3200	7	40 WATTS	400
3500	9	60 WATTS	600
3700	13	75 WATTS	900
3900	22	90 WATTS	1300

  
Call Toll Free 1-800-673-2580  
SOLD AND SERVICED BY:  
**NORTHEAST AGRISYSTEMS, INC.**  
FLYWAY BUSINESS PARK  
139 A West Airport Rd.  
Lititz, PA 17543  
(717) 569-2702  
Dealer Inquiries Invited

**PRO GENETICS** Bonus Maker Boars  
Offering Duroc, Blackline & Maternal Line Boars  
FULLY TESTED & INDEXED • LEAN & MUSCULAR  
RAISED IN CENTRAL PA  
For Information And Prices Contact:  
**"J.J." JARMON**  
(PA Toll Free) 1-800-468-5524 or (717) 367-1525  
419 West High Street  
Elizabethtown, PA 17022