

Dewart Hay

Dewart, PA.
Monday, April 13, 1992
Report Supplied by Auction
28 LOADS HAY, 61.00-182.00.
STRAW: 7 LOADS, 69.00-97.00.
WOOD: 6 LOADS, 25.00-39.00 LOAD.
CORN: 5 LOADS, 93.00-99.00.
OATS: 5 LOADS, 2.15-2.90 BU.

Keister's Hay

Middleburg, PA
April 14, 1992
Report supplied by auction
59 LOADS HAY.
ALFALFA: 125.00-170.00.
MIX HAY: 55.00-200.00.
TIMOTHY: 135.00-195.00.
STRAW: 7 LOADS, 95.00-130.00.
BAR CORN: 6 LOADS, 85.00-120.00.
OATS: 11 LOADS, 2.10-3.35 BU.

Pa. Grain

April 13, 1992
Report supplied by FDA
COMPARED WITH LAST MONDAY'S MARKET FOR SOUTHEASTERN, CENTRAL, AND SOUTH CENTRAL PA: CORN UNEVEN, MOSTLY STEADY TO .05 LOWER; WHEAT AND SOYBEANS STEADY TO .10 LOWER; BARLEY AND OATS STEADY; EAR CORN STEADY TO STRONG.
SOUTHEASTERN PENNSYLVANIA
CORN NO. 2-Y RANGE 2.80-3.05, AVERAGE 2.94, FEW REPORTED CONTRACT FOR HARVEST 2.59-2.80; @WHEAT NO. 2 RANGE 3.61-4.06, AVERAGE 3.82, FEW REPORTED CONTRACT FOR HARVEST 3.16-3.51; BARLEY NO. 3 RANGE 2.00-2.35, FEW REPORTED 2.55, AVERAGE 2.18, FEW REPORTED CONTRACT FOR HARVEST 1.70; OATS NO. 2 RANGE 1.80-2.15, AVERAGE 1.94, FEW REPORTED CONTRACT FOR HARVEST 1.70; SOYBEANS NO. 1 RANGE 5.50-5.80, AVERAGE 5.65, FEW REPORTED CONTRACT FOR HARVEST 5.60-5.82; FEW REPORTED GR. SORGHUM #2 RANGE 2.60, AVERAGE 2.60; FEW REPORTED +BUCKWHEAT FEW REPORTED CONTRACT FOR HARVEST 8.65; AVERAGE MOISTURE EAR CORN

RANGE 75.00-100.00, AVERAGE 86.07.

SOUTH CENTRAL PENNSYLVANIA
CORN NO. 2-Y RANGE 2.85-3.10, AVERAGE 2.99; @WHEAT NO. 2 RANGE 3.50-3.75, AVERAGE 3.62; BARLEY NO. 3 RANGE 2.00-2.50, AVERAGE 2.19; OATS NO. 2 RANGE 1.60-2.00, AVERAGE 1.82; SOYBEANS NO. 1 RANGE 5.55-5.80, AVERAGE 5.67; AVERAGE MOISTURE EAR CORN RANGE 90.00-95.00, FEW REPORTED 80.00, AVERAGE 90.00.
SOUTHEASTERN, CENTRAL & SOUTH CENTRAL SUMMARY
CORN NO. 2-Y RANGE 2.80-3.10, AVERAGE 2.98; @ WHEAT NO. 2-Y RANGE 3.50-4.10, AVERAGE 3.73; BARLEY NO. 3 RANGE 2.00-2.50, AVERAGE 2.16; OATS NO. 2 RANGE 1.60-2.15, AVERAGE 1.88; SOYBEANS NO. 1 RANGE 5.40-5.80, AVERAGE 5.60; AVERAGE MOISTURE EAR CORN RANGE 75.00-100.00, AVERAGE 86.23.

CENTRAL PENNSYLVANIA
CORN NO. 2-Y RANGE 2.90-3.10, AVERAGE 3.02; @WHEAT NO. 2 RANGE 3.50-4.10, AVERAGE 3.69; BARLEY NO. 3 RANGE 2.00-2.20, FEW REPORTED 2.40, AVERAGE 2.08; OATS NO. 2 RANGE 1.60-2.10, AVERAGE 1.86; SOYBEANS NO. 1 RANGE 5.30-5.65, AVERAGE 5.50; FEW REPORTED GR. SORGHUM #2 RANGE 3.30, AVERAGE 3.30; AVERAGE MOISTURE EAR CORN RANGE 80.00-87.00, AVERAGE 82.83.

WESTERN PENNSYLVANIA
CORN NO. 2-Y RANGE 2.68-3.05, AVERAGE 2.83; @WHEAT NO. 2 RANGE 3.75-3.80, AVERAGE 3.77; BARLEY NO. 3 RANGE 2.16-2.40, AVERAGE 2.28; OATS NO. 2 RANGE 1.60-1.95, AVERAGE 1.80; SOYBEANS NO. 1 RANGE FEW REPORTED 5.55, AVERAGE 5.55; AVERAGE MOISTURE EAR CORN RANGE 71.50-75.00, AVERAGE 73.25.

MONTH AGO
CORN NO. 2-Y 2.97; @WHEAT NO. #2-Y 3.82; BARLEY NO. 3 2.09; OATS NO. 2 1.88; SOYBEANS NO. 1 5.72; AVERAGE MOISTURE EAR CORN 85.27.

YEAR AGO
CORN NO. 2-Y 2.74; @WHEAT NO. #2-Y 2.67; BARLEY NO. 3 2.05; OATS

NO. 2 1.43; SOYBEANS NO. 1 5.71; AVERAGE MOISTURE EAR CORN 74.96.

National Grain Market

St. Joseph, MO
April 15, 1992

GRAIN TRADE AT CHICAGO BOARD SEMI-REOPENED WEDNESDAY, IN A TWO HOUR TRADE SESSION. MOST TRADERS SCRAMBLED TO EVEN POSITIONS AFTER LOST TIME AND REALIGN WITH KANSAS CITY TRADE. WHEAT 2 TO 9 CENTS HIGHER. CORN MIXED. SORGHUM 1 TO 5 CENTS HIGHER. SOYBEANS 3 TO 9 CENTS HIGHER. WHEAT PRICES MODERATELY HIGHER ON OPTIMISM CHINA WILL SOON BE OFFERED U.S. SUBSIDIZED WHEAT. OTHER EXPORT INTERESTS ALSO BOOSTED WHEAT PRICES. CORN PRICES FINISHED MIXED, MOSTLY HIGHER, SUPPORTED BY NEWS SOUTH AFRICA TO TENDER ABOUT 600,000 TONNES OPTIONAL-ORIGIN CORN. FUND BUYING ON THE BOARD, PUSHED CORN PRICES HIGHER. BEAN PRICES SURGED HIGHER AS TRADERS EVEN POSITIONS AND MADE NEEDED ADJUSTMENTS FOR LOST TIME. POTENTIAL FOR IMPROVED EXPORT TRADE, ADDED TO PRICE GAINS.

EXPORT NEWS: THE JAPANESE FOOD AGENCY BOUGHT 61,700 TONNES WHEAT FOR JUNE.

DATE CHANGE YEAR AGO
04/15/92 04/14/92 04/17/91 WHEAT: KANSAS CITY 4.02-4.03 UP 3 2.90-2.92 MINNEAPOLIS TRUCK BID 4.16 UP 3 1/4 3.01 1/2-3.08 1/2 PORTLAND 4.40-4.42 UP 2 3.36-3.38 ST. LOUIS 3.45-3.48 UP 6-8 2.88-2.91

CORN, U.S. NO. 2 YELLOW: KANSAS CITY 2.54-2.55 DN 1 2.57-2.60 MINNEAPOLIS 2.49 1/4 DN 1/4 2.51 SO. IOWA 2.58 UP 2-DN 1/2 2.57-2.59 1/2 OMAHA NO QUOTE 2.43-2.45
SOYBEANS, NO. 1 YELLOW: KANSAS CITY 5.84-5.86 UP 7 5.93-5.95 MINNEAPOLIS 5.72 1/2 UP 5 1/2 5.84 1/4 SO. IOWA 5.80-5.82 UP 9-6 5.87-5.91 1/2 C. ILL. PROCESSORS 5.81 1/2-5.91 1/2 UP 3 1/2-4 1/2 5.95 1/2-5.99 1/2

*KANSAS CITY, US NO. 1 HARD RED WINTER WHEAT, ORDINARY PROTEIN. MINNEAPOLIS, US NO. 1 DARK NORTHERN SPRING WHEAT, 14% PROTEIN. PORTLAND, NO. 1

SOFT WHITE WHEAT, ST. LOUIS, NO. 2 SOFT RED WINTER WHEAT.

FUTURES CLOSE: KANSAS CITY (MAY) WHEAT 3.65 UP 3 1/2 2.86 1/2 MINNEAPOLIS (MAY) WHEAT 3.80 UP 3 1/4 2.86 1/2 CHICAGO (MAY) WHEAT 3.61 NC 2.80 1/2 (MAY) CORN 2.53 1/4 DN 1/4 2.54 (MAY) SOYBEANS 5.75 1/2 UP 4 1/2 5.82 1/4

EXPORT: BARGE OR RAIL, PORT OF NEW ORLEANS OR NORTH TEXAS GULF. NO. 1 HARD RED WINTER WHEAT ORDINARY PROTEIN 4.37-4.38 UP 1-2 3.30 NO. 2 SOFT RED WINTER WHEAT 4.06-4.14 NC-UP 8 3.16-3.21 NO. 2 YELLOW CORN 2.77-2.78 DN 1-NC 2.79-2.80 NO. 2 YELLOW SORGHUM RAIL 4.95 DN 1 BARGE 4.52 UP 3 4.86-4.89 NO. 2 YELLOW SOYBEANS 6.04 UP 5 6.13-6.

Regional Hay

April 13, 1992
Eastern, Pa.

HAY & STRAW MARKET FOR EASTERN PA - (ALL HAY NO. 2 AND BETTER, PRICES PAID BY DEALERS AT THE FARM & PER TON). HAY AND STRAW STEADY TO 10.00 HIGHER.

ALFALFA 90.00-130.00; MIXED HAY 80.00-115.00; TIMOTHY HAY 75.00-115.00, FEW REPORTED 130.00; STRAW 50.00-80.00; MULCH 40.00-65.00, FEW REPORTED 20.00.

SUMMARY OF LANCASTER CO. HAY AUCTIONS FOR WEEK ENDING 4/10/92. PRICES PER TON: LOADS: 320 HAY, 65 STRAW, & 26 BAR CORN.

ALFALFA 100.00-202.00; MIXED HAY 89.00-175.00; TIMOTHY HAY 111.00-167.00; STRAW 84.00-115.00; BAR CORN 95.00-112.00.

SUMMARY OF CENTRAL PA. HAY AUCTIONS FOR WEEK ENDING 4/10/92. PRICES PER TON: LOADS: 292 HAY, 32 STRAW & 21 BAR CORN.

ALFALFA 97.00-201.00; MIXED HAY 85.00-155.00; TIMOTHY HAY 87.00-165.00; STRAW 65.00-100.00; BAR CORN 85.00-115.00.

Hackettstown Poultry & Egg

Hackettstown, N.J.
Tuesday, April 14, 1992
Report Supplied by Auction
HEAVY FOWL .20-1.40.
LEGHORN FOWL .10.

MIXED FOWL .45-1.00.
BROILERS .30-.35.
ROOSTERS .30-1.50.
GEESE .40-1.60.
BANTAMS PER LB.: .10-2.00.
BUNNIES EACH 1.50-5.25.
TURKEYS .35.
DUCKS .75-.95.
RABBITS .60-1.55.
PIGEONS, BY LB. 2.70.
DUCKLINGS EACH .65-2.50.
GOSLINGS, EACH 2.00-4.50.

WHITE EGGS: EXTRA LARGE & JUMBO .65-.80; LARGE .43-.68; MEDIUM .36-.59; PULLETS .33-.38; PEEWEEES .15-.23.
BROWN EGGS: EXTRA LARGE & JUMBO .57-.82; LARGE .55-.76; MEDIUMS .60; PULLETS .35-.41; PEEWEEES .25-.29.

National Egg Market

April 15, 1992

Prices were unchanged to higher in the Northeast on the large sizes, unchanged on the balance. The market tone was steady to firm in the Northeast, and generally steady elsewhere. Demand for canted eggs was good to very good. Inter-dealer inquiry was also quite active for canted or graded loose eggs for immediate delivery and offerings were very limited and premium priced. Retail specials were fairly widespread and provided a strong demand. Supplies were adequate to short. Breakers were inactive buyers of shell eggs other than regular commitments. Live hen offerings were sufficient for the light to moderate demand.

Kutztown Produce Auction

Saturday, April 11, 1992

TOTAL LOADS: 22.
BARLEY STRAW: 68.00.
RYE STRAW: 66.00.
WHEAT STRAW: 62.00-66.00.
ALFALFA HAY: 137.00-150.00.
MIXED HAY: 102.00-160.00.
TIMOTHY HAY: 122.00.
OATS: 2.30 BU.
COAL: 50.00 BIN.
NEXT AUCTION SAT., APRIL 25, 9:30.

HORSE SALE
APRIL 24, 1992
7:00 P.M.

Annual Spring Heifer Special
Sat., May 2, 1992

NEW HOLLAND SALES STABLES INC.
THE ACTION AUCTION

LIVESTOCK IS OUR ONLY BUSINESS

MONDAY

SLAUGHTER HOGS



EARLY BIRD HOG SALE
8:00 A.M.

Sell Your Hogs At New Holland Sales Stables, Inc.
See them weighed, sold and pickup your check.

10:00 A.M.



HORSES
MULES

1:30 P.M.

BEEF SALE
SHEEP
GOATS
CALVES



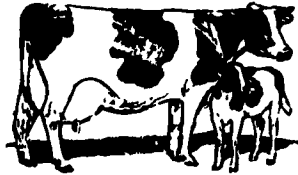
WEDNESDAY

HEIFER SALE

11:00 A.M.

COW SALE 12:00 NOON

HEIFERS
BULLS



DAIRY
COWS

We have the usual run of 50 to 100 Heifers, all ages.
Loads of fresh cows and springers from our regular shippers.
Also some local fresh cows and springers.

1:30 P.M.

FEEDER PIG SALE



Pigs are accepted after 6:30 A.M. State graded from 8 to 12.
Dairy Barn and Feeder Pig Barn are cleaned and disinfected weekly for your protection.

THURSDAY

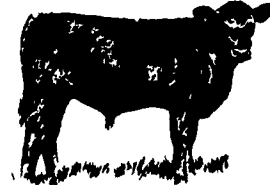
Beef Auction

10:00 A.M.

BULLS
STEERS
BEEF COWS

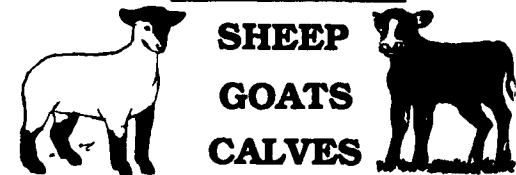


1:00 P.M.
STOCKERS
&
FEEDERS



12:00 NOON

SHEEP
GOATS
CALVES



NEW HOLLAND SALES STABLES, INC.
12 Miles East of Lancaster Off Route 23, New Holland, Penna.

MANAGERS

Norman & David Kolb - 717-397-5538

Field Representatives

Luke Eberly - 215-267-6608 738-1865
Homer Eberly - 215-267-3047
Ron Ranck - 717-656-9849

Sale Barn Office Manager
Roger Floyd - 717-354-4341
FAX # 717-355-0706

Order Buyer
Paul Good - 215-445-6662