

**WE HAVE A NEW CASE IH MAXXUM 5100 SERIES TRACTOR FOR YOU PURCHASED BEFORE THE PRICE INCREASE TO SAVE YOU \$\$**



All Line-Up Of Maxxum Tractors 74-86-94 HP, 2 WD, MFD, Rops, Cab & Air

Top-Of-The-Line 94 HP Model 5140 Cab & Air, AWD, PS, Shuttle Reverser Trans. For No Clutching Forward To Reverse Shifting

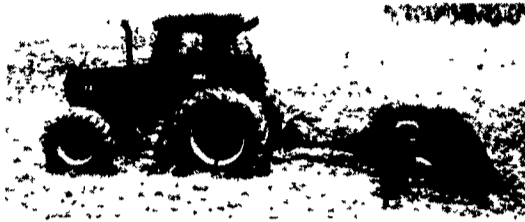
Economy Model 5120 2WD, Rops, Synchro-Shift, 74 HP With Power Shuttle Reverser Transmission

**SEE BINKLEY & HURST SOON FOR BEST MEDIUM-SIZE TRACTOR BUILT!**

**4500**  
Vibra Shank  
Field  
Cultivators

Sizes In Stock:  
• 9 1/2 Ft. Pull Type  
• 11 1/2 Ft. Pull Type  
• 13 1/2 Ft. Pull Type

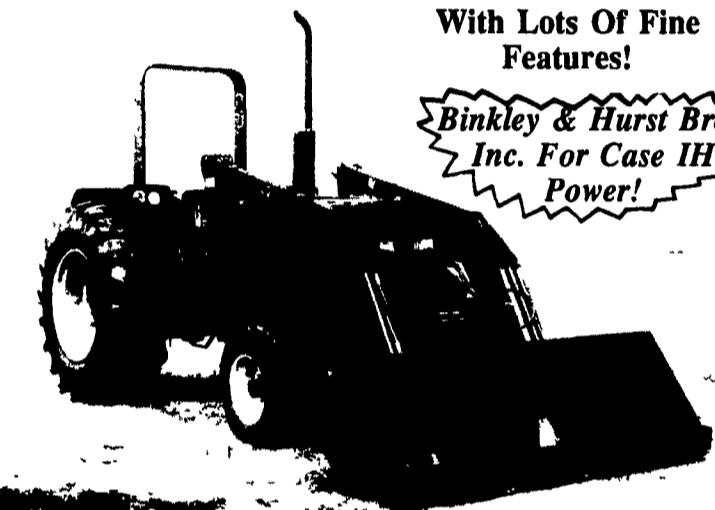
*Make Your Deal Now For A Special Pre-Season Discount!*



**No Matter If It's A Loader You Need Or A Corn Planter Tractor For All-Around Farm Work, We Have SUPER DEALS On Quality New CASE IH 95 SERIES DIESEL TRACTOR**

**With Lots Of Fine Features!**

*Binkley & Hurst Bros. Inc. For Case IH Power!*



- (1) NC3687 New Case IH 595 All Wheel Drive 52 HP Tractor With Mount-O-Matic 2250 Loader With Shuttle Shift Transmission In The Quality Tractor For Easy Shifting, 2 Valves, Heavy Duty 12" Clutch Designed For Loader Work, Big Hydraulics 17.3 GPM Pump, Independent PTO, Telescopic 3 Pt. Hitch Arms For Easy 3 Pt. Hookup
- (2) NC3756 New Case IH 52 HP Tractor Model 595 With 2 Speed On The Go Power Shift, 2 Hydraulic Outlets, Big 17.3 GPM Pump
- (3) NC3681 New Case IH 695 Diesel Tractor 2 Wheel Drive, 2 Speed Power Shift, Row Crop Axle Type Model, 62 HP, 18.4x30 Rear Tires, 2 Valves, Big 18.1 GPM Pump
- (4) NC3780 New Case IH 395 All Wheel Drive 35 HP Tractor With Forward Reverser Shuttle Shift Transmission, 16.4 GPM Pump
- (5) NC3670 New Case IH 595 2 Wheel Drive, 52 HP Diesel Tractor With Shuttle Shift Forward & Reverse Transmission, 17.3 GPM Pump, With Heavy Duty 12" Clutch
- (6) NH3463 Case IH 495 All Wheel Drive 42 HP Diesel With Shuttle Shift Forward & Reverse Transmission, 540 Independent PTO, 2 Hydraulic Outlets, Big 16.4 GPM Hydraulic Pump, 14.9x28 Rear Tires and 8.3x24 Front Tires
- (7) NC3849 Case IH 895 Row Crop ROPS Tractor With 2 Speed Power Shift Transmission, 72 H Rating, 2 Hydraulic Outlets, 18.1 GPM, 540 and 1000 PTO, 18.4x30 Tires and 10:00x16

THESE TRACTORS WERE PURCHASED BEFORE THE PRICE INCREASE, SO DON'T MISS YOUR PICK BECAUSE WE WILL PASS THE SAVINGS ONTO YOU!

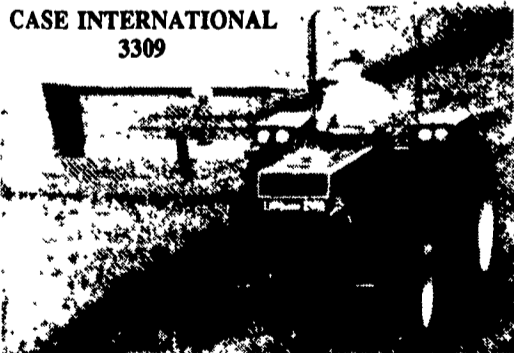
**SPECIALS ON NEW CASE IH MACHINERY**

Get A Super Deal On A New Compact Case IH Round Baler Model 8420 w/Windrow Gathering Wheels - Let's Deal!



- New Case IH 8340 Mower Conditioner, Tior Rubber Rolls/Stub Guards, NC 3599
- New Case IH 3309 Disc Mower Conditioner, 7 Disc, 9'3" Width, NC 3462
- New Case IH 600 Forage Blowers
- New Case IH 960 Rake Shaft Drive-No Belts
- New Case IH 860 Rake Parallel Bar Ground Drive Shaft Driven (No Belts)
- 8720 Forage Harvester, 2 Heads
- 8520 In Line Square Baler - Also Horse Drawn
- 8530 In Line Square Baler
- 8420 Round Baler 39" Wide Up To 54" Height
- 5300 Grain Drills With Press Wheels, Check With Us For Your Size (Soybean Specials)
- 6500 Coulter Chisel With Hydraulic Coulters, 9 Shank
- 5700 7 Shank 3 Bar 3 Pt. Chisel Plow
- #14 5 Shank Subsoiler
- 3 and 4 Bottom 145 Auto-Reset Rollover Plows
- 183 3 Pt. 6 Row Cultivator
- 184 Minimum-Till 4 Row Cultivator, 3 Pt. Hitch
- 181 3 Pt. 15' Rotary Hoe
- Pull Type Vibra-Shank Field Cultivators, Call For Your Size

**CASE INTERNATIONAL 3309**



**CASE IH DOES IT BETTER!** And Your Dealer Binkley & Hurst Has An All New Case IH 3309 9'3" Cut Disc Mower Conditioner Ready For You! In Stock!

*Delivers Fast Cutting In The Toughest Field Haying Conditions!*

**CASE IH 5400 NO-TILL DRILL**

26x7 In Stock With Yetter No-Till Coulters Mounted On Heavy Duty Case IH Yetter Transport With Hydr. Markers

Set-Up & Ready For That Tough No-Till Seeding Job! Buy A Main-Line Case IH & Own



**1 ONLY AT A BETTER PRICE!** New Case IH 12' Hydro Swing Mower Conditioner

**BINKLEY & HURST BROS., INC.**  
133 Rothsville Station Rd., Lititz, PA 17543  
Located 1/2 Mile North of Rothsville  
(717) 626-4705 1-800-IT PAYS U



**THIS MACHINE CAN REPLACE YOUR CULTI-PACKER & FIELD CULTIVATOR: The Perfect Finishing Tool For Your Farm!**

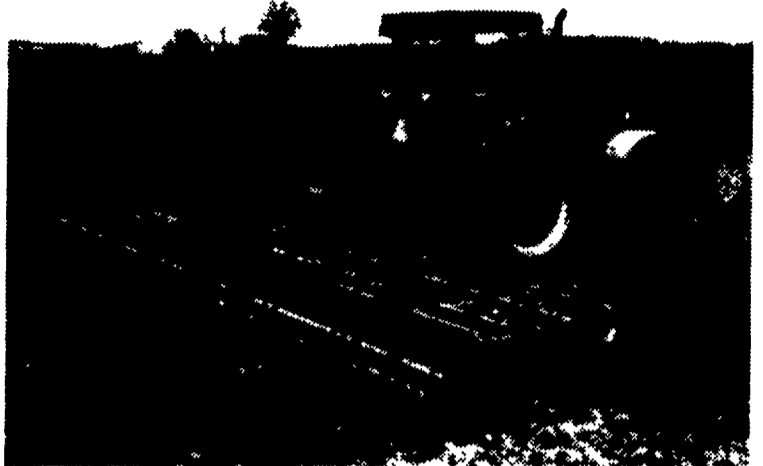
PERFECTA II S-Tine Cultivators



from Unverferth

LITTLE TO BIG

From 4 Foot Up To 28 Foot Wing Models



**YOUR DELAER IS BINKLEY & HURST BROS., INC.**  
IN STOCK: 11 Foot, 13 Foot, 15 Foot, 17 Foot With Hydraulic Fold Wing And 12 Foot 6 Inch Transport Width

**Yetter**  
...for land's sake!



**Rotary Hoes**

**SPECIAL PRE-SEASON PRICES ON LIMITED QUANTITY YETTER ROTARY HOES!**

**GET READY FOR SPRING WITH YOUR FERTILIZER HANDLING EQUIPMENT FROM BINKLEY & HURST.**

Available Now: New Auger Constructed With PVC (No Rusting) And Nylon Flighting In Stock.



Get A Good Deal!

Buy Early For Savings!

- Bush Hog 3 Pt. Rota Tillers
- Bush Hog Tiller 38" 3 Pt. w/24 Blades, Chain Drive.....\$1,155
- Bush Hog Tiller 50" 3 Pt. w/36 Blades, Chain Drive.....\$1,425
- Bush Hog 62" 3 Pt. w/40 Blades, Chain Drive .....\$1,525
- Model 3126-02 10 1/2' Pull Model Rotary Mower w/Hyd. Lift .....\$4,650



**RTS ROTARY TILLER FEATURES:**

- Offset capability w/driveline in line w/tractor
- Solid rotors • Tough #80 chain drive
- High carbon, long-life steel blades

**The New Generation Of Precision Planting**

**GET A NEW KINZE 6 ROW NOW!**

**KINZE Series II**



Single Double Frame Planters Converts from single to double frame with all the row spacing, fertilizer, and tillage options you'll ever need - in one planter! Precision planting! With a planter that converts to narrow rows, even solid rows, in minutes.

- Independent, Modular Wheel Assemblies
- Spring Loaded Contact Wheel Drive
- Easy Access, End-Mounted Transmissions
- Master Slave Hydraulic Lift System
- Rugged 7"x7" Frame

**AVAILABLE NOW FOR QUICK DELIVERY:**

(2) New Double Frame Planters - One With Dry Fert. And One With Liquid Fert.

**BINKLEY & HURST BROS. INC.**

133 Rothsville Station Rd. Lititz, PA 17543  
(717) 626-4705

After Hours Emergency Parts Call: (717) 626-0885 (717) 626-5159 (717) 859-9768

Machinery Sales & Parts Dept. Hours:  
Mon.-Fri. 7 AM to 5 PM Sat. 7 AM to 11:30 AM  
Sun. Closed - Lord's Day

Farm Plan. A Service of FPC Financial

