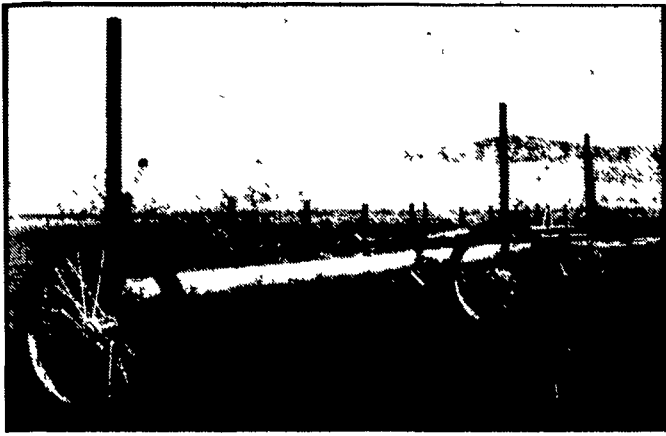


Destroy Tall Weeds In  
Production Fields, Pastures  
And Row Crops...

# SUPER SPONGE

# WEED WIPER

# CONTACT HERBICIDE APPLICATOR



**CYLINDRICAL SPONGE APPLICATOR  
PUTS MORE HERBICIDE ON WEEDS,  
WITHOUT DRIPPING OR DRIFT!**

**IN STOCK:**

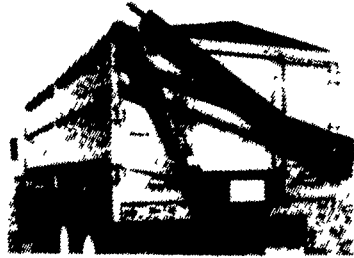
- \* 30' Super Sponge
- \* Heavy Duty Frame (1 Yr. Warranty)
- \* "See-Through" Tank
- \* Even Distribution Sponges (30 Day Warranty)
- \* Sight Glass Manifolds For Precise Flow Metering
- \* No Dripping Or Drifting - For Use In Corn, Wheat, Soybeans, Vegetables, Etc.



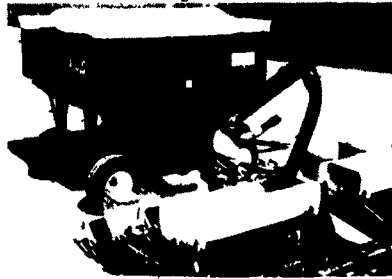
**KNOCK OUT -**  
Johnson Grass,  
Thistles, Pig Weed,  
Crabgrass, Wild  
Mustard, Etc.

*Call Binkley & Hurst Bros. Inc. Today!*

**SAVE \$\$\$ By Buying Your Fertilizer  
In Bulk By Using This Attachment  
On Your Truck**



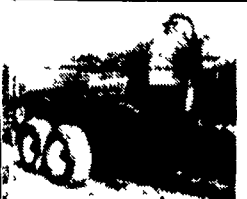
**HYDRAULIC TRUCK AUGER**  
15 1/2' Folding & Other Sizes  
Or Pull This Gravity Bin With  
Auger Attachment Behind Your  
Pickup Truck And Fill Your  
Hoppers Without Lifting A Bag!



**New Husky 8"x25'  
Lagoon Pump, 6000  
GPM Cap., Vertical  
Deflector, 8" Fill Pipe  
And Stand  
CASH OR  
Lease For \$280/Mo.\***



**New Husky 3600 Gal.  
Top-Fill Spreader 4"  
Stress-Proof Axles, 10  
Bolt Hubs, 21.5x16.1  
Tires, Hard Coat Epoxy  
Lined Inside  
CASH OR  
Lease For \$347/Mo.\***



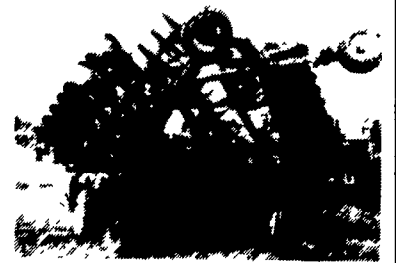
**New Husky 3000 Gal.  
Vac. Spreader, 4" Stress-  
Proof Axles, 10 Bolt  
Hubs, Hardcoat Epoxy  
Lined Inside, 6" Sideport,  
6" Fill Hose, 210 CFM Pump  
CASH OR Lease For \$426/Mo.\***

\* Lease Subject To Credit Approval.

**IF YOU NEED A HEAVY WEIGHT  
HEAVY DUTY WING DISK  
HARROW WITH ROCKFLEX  
SPRING HANGERS YOU NEED  
TO CHECK OUT THIS ONE!**

*Sunflower 25'8" With 1400 Series*

5/16"x24" Blades On Front, 8 1/2" Spacing,  
1/4"x24" Blades On Rear, 9 1/2" Spacing



**ONE ONLY DEMO. SPECIAL!**

**DON'T MISS A DEAL!**



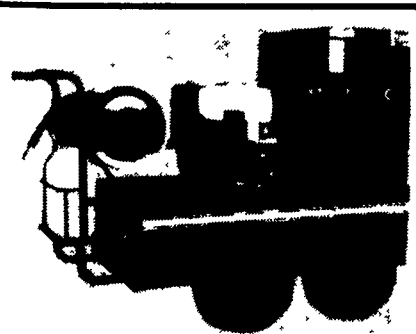
**New Gehl 472 Bushel  
Or 2,300 Gallon  
Spreader Tandem Axle.  
Also...Gehl Scavenger  
Model 309 With 1005  
Gallon Or 192 Bushel At A  
Super Cash Towaway  
Price**

**New Dunham Lehr Farmhand  
12' Culti-Packer With 19"  
Rolls.**

**New 14' Packer With  
Transport Hydraulic Lift -  
Come In & Ask For Amos Sr!**

*Come & See*

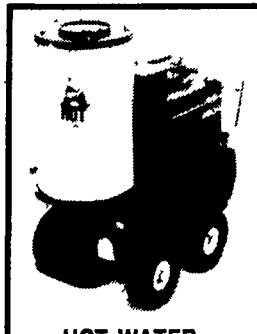
**ARE YOU SATISFIED WITH THE PERFORMANCE  
OF YOUR PRESSURE WASHER?**



**HOT WATER GASOLINE (OIL FIRED)**

**WE HAVE A  
LARGE INVENTORY  
ON DISPLAY AND  
READY  
FOR DELIVERY!**

Look for us at the  
Central PA Industrial &  
Construction Show,  
Booths 104-106  
April 15th & 16th At The  
State Farm Show Building



**HOT WATER  
ELECTRIC**

**On-Site  
Service  
Of  
Pressure  
Washer**



**Also:  
LP  
Carburetor  
Service &  
Conversions**

**CALL US AT BINKLEY & HURST BROS. INC.  
We Have The Pressure Washer You Need Or We'll  
Fix The Pressure Washer You Want To Keep!  
717-626-4705 1-800-IT PAYS U**

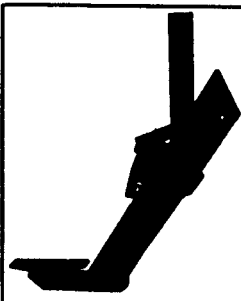
**IT  
IS HERE  
!!!**

**FOR QUALITY FORKLIFTS WITH  
SEE-THROUGH  
MASTS YOU NEED A  
HARLO!**



**COME & SEE THIS  
NEW HARLO!**

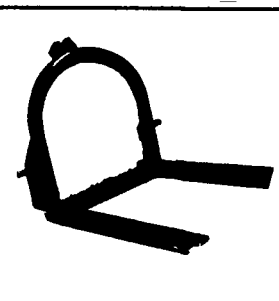
**For More Information  
Call Our Sales Dept.  
Now & Ask  
For Merv!**



**WSS1  
Sub-Soiler -  
A Heavy-Duty  
Attachment Designed  
For Rugged Use.**

• 3 Pt. 5 1/2' Disc, 18"  
Blades - \$625

• 3 Pt. 6 1/2' Disc 18"  
Blades - \$675

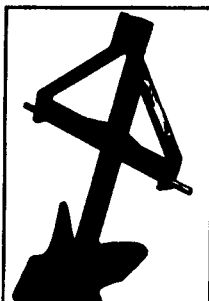


**WCA1  
Carry-All-  
An All-Purpose Tool,  
One Of The Strongest  
On The Market. Can  
Be Floored. A Great  
Help In Moving Heavy,  
Bulky Items With  
Ease.**

• 3 Pt. Fertilizer  
Spreaders - 600 Lb.  
Capacity - \$395

• 3 Pt. Subsoiler -  
\$135

• 3 Pt. 1 Bottom  
Plow \$225



**WPP1  
Potato Plow -  
Constructed For  
Heavy-Duty Use.  
Features 1x4  
Shank, 2x3 Angle  
Iron With 3/8"  
Bracing And  
Large Point.**

• 3 Pt. 2 Bottom Plow  
\$340

• 3 Pt. Carry All-\$95

• 3 Pt. 4 Wheel  
Rake - \$530

• 3 Pt. Potato Plow -  
\$95

# BINKLEY & HURST BROS. INC.

133 Rothsville Station Rd.  
Lititz, PA 17543  
(717) 626-4705

**Farm Plan**  
A Service of FPC Financial



**Machinery Sales & Parts Dept.**  
Mon.-Fri. 7 AM to 5 PM, Sat 7 AM to 11:30 AM  
Sun. Closed Lord's Day  
After Hours Emergency Parts Call.  
(717) 626-0885 (717) 626-5159  
(717) 859-8768