

# Penn State Resolves Ag Land Issue

(Continued from Page A20)

the Department of Dairy and Animal Sciences to get \$114,000 and 32 acres. Costs for the equipment and materials needed to make the land suitable for research are to be taken from the \$114,000.

"Of that (money), 50 percent is to be paid by the university, 25 percent by the college and 25 percent by the department," Cash said.

The money is going to be used to put in fencing and for water systems development to go to more intensive grazing. Other costs will include such things as seeding the

land to establish a healthy pasture, etc.

The specific animal breeds at the university include purebred herds of Polled Hereford, Angus, and Simmental cattle. There are also some crossbred cattle.

The animals are used in teaching (students), extension programs, as well as in pasture systems research.

"Nothing has been eliminated," Cash said. "We're going to cut back some on numbers. We have more than we need. We're going to trim and it won't affect programs."

# MILK. IT'S FITNESS YOU CAN DRINK.

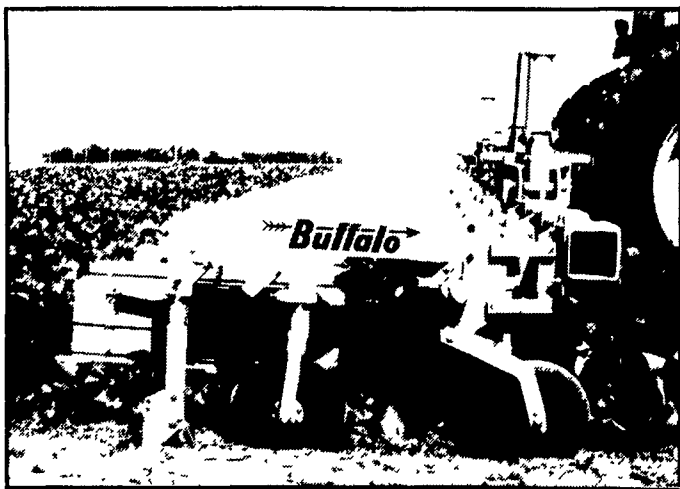
Ridge Till

or Conventional

## Buffalo

6300 CULTIVATOR

ENGINEERED AND DESIGNED FOR EASE OF ADJUSTMENT



- Built BUFFALO Tough for high-speed, high-residue conditions
- Rugged 4"x6" main frame mounting tube on each gang for easy access
- More toolbar height for improved crop clearance
- Wider, longer and heavier, parallel linkage with precision ground one inch linkage pins and NEW "composite" bushings
- Screw adjustable gauge wheels and stabilizer discs with positive, quick-set, single-wrench adjustment
- Disc hillers with visual, positive-pitch settings, forged shanks to absorb shock and two tough, heavy-duty, tapered roller bearings offer long lasting durability
- Heat-treated sweep shanks for durability, improved soil and residue flow with adjustable sweep mounting brackets for fine tuning the pitch of the sweep, soil flow and penetration
- Wedge-lock shield mounting tube on each gang for single-bolt installation or removal
- Large 16" x 4.5" semi-pneumatic flat-free depth tires with dirt-shedding, staggered lugs improve rolling radius, flotation and enhance residue flow
- More options available than any other cultivator on the market

We Look At Quality And Service From A Unique Perspective... YOURS

**RYDER SUPPLY CO.**

539 Falling Spring Road  
P.O. Box 219  
Chambersburg, PA 17201-0219  
Phone 717-263-9111

Mfg. by: FLEISCHER MANUFACTURING, INC.  
Columbus, Nebraska 68602-0848

Planters

Cultivators

Guidance Systems

# Spring Hostein Show

(Continued from Page A26)

Penn Gate Columbus Dutchess, Penn Gate Farm. AGED COW: 1. Campbell Run Valiant Joyce, Mark and David Campbell; 2. Lockway Ivy Plato, C. Richard and Georgianna Locke; 3. Windy-Knoll-View Ultimate Pala, James and Nina Burdette. SENIOR CHAMPION: Meadow-Vu Starbuck Christine, Thomas Eckstine. RESERVE SR CHAMPION: Campbell Run Valiant Joyce, Mark and David Campbell. GRAND CHAMPION: Meadow-Vu Starbuck Christine. RESERVE GRAND: Campbell Run Valiant Joyce. BEST BRED, OWNED: Meadow-Vu Starbuck Christine. PREMIER BREEDER: Penn Gate Farm. PREMIER EXHIBITOR: Penn Gate Farm. BEST THREE: Windy Knoll View. PRODUCE OF DAM: Windy Knoll View Valiant Paola. DAM AND DAUGHTER: Windy Knoll View Ultimate Pala and Windy Knoll View Valiant Paola, Windy Knoll View.

Honora, Amanda Coates 3.Spruce-Run White Beauty, Brian G. Nealy. SUMMER YEALING: 1. Rue-Hal Inspiration Rocket, Trisha Geist; 2. One Farm Avenger Jill, David Kocher; 3. Dar-Dale Grandeur Rusty, Daphne Ann Doll. SPRING YEALING: 1. Fountain Farm Lead Emblem, Elizabeth L. Walton; 2. Ellecta JY/Broker Ginger, Adam Cudoc; 3. Broozy-Farms Counselor Liza, Mark Hough.

WINTER YEALING: 1. One Farm Karens Miracle, Tara R. Kocher; 2. Sukavin Starbuck Jenna-ET, William Mosholder; 3. Dar-Dale Algonquin Autumn, Dixie Lynn Doll. FALL YEALING: 1. Windy-Knoll-View Pizazz-ET, Justin Burdette; 2. Locker-Lane Michael Madonna, William Mosholder; 3. Count Dar-Dale Nickle, Daphne Ann Doll. JR CHAMPION: Windy-Knoll-View Pizazz-ET, Justin Burdette. RESERVE JR CHAMPION: Fountain Farm Lead Emblem, Elizabeth Walton.

DRY COWS, 4-YEARS, UNDER: 1. Globe Run Starbuck Beverly, John Andrew Foster III; 2. Ideals Odyssey Flirt, Rachel Tamis; 3. Broozy-Farms Ichabod Brandy, Eric Stine. DRY COW, 5-YEARS, OVER: 1. Walnut Hills Triple Bart, Dianne Glock; 2. How-Ella Mark A Tracy, Jeffrey Wilbur. UNFRESH JR 2-YR-OLD: 1. Globe Run CB Toppun Oslo, Lory Baker; 2. CS Owl Creek County Bizzy, Eric Troutman; 3. Brook-Lodge Elevation Tramp, Brian Coulson.

SR 2-YR-OLD: 1. A Jay Vooont Sidney Sal, Kathleen Sue Duncan; 2. Daview Mark Gina, Jeffrey Davis; 3. Ideals Matinee Star, Rachel Sara Tamis. JR 3-YR-OLD: 1. Globe-Run Top Gun Alpha, John Jr. and Alice Foster; 2. Walnut Hills Astro Bridgetta, Dianne Glock; 3. Lonely-Spot Classic Lori, Eric Stine.

SR 3-YR-OLD: 1. CZagandyk Jet Western, John Leib Jr.; 2. Alright Dixiecat Ana, Adam Jason Tanis; 3. C Fricosons Allie Star Lady, Salina Howard.

FOUR YEAR OLD: 1. Globe-Run Sexy Banchie, John A. Foster III; 2. Strawberry Acres Majesty Kris, Matthew Walk.

FIVE YEAR OLD: 1. Dale-Pride Specs Betz, Kurt D. Hostetter; 2. Deep-Valley Willow Juanita, Angela Marie Homan.

100,000-POUND CLASS: 1. Globe-Run Sexy Dardana, John Andrew Foster III. AGED COW: 1. Daview Pets Ginger, Jeffrey Davis.

SENIOR CHAMPION: Dale-Pride Specs Betz, Kurt Hostetter. RESERVE SR CHAMPION: Globe-Run Sexy Banchie, John Foster III.

GRAND CHAMPION: Dale-Pride Specs Betz, Kurt Hostetter. RESERVE GRAND CHAMPION: Globe-Run Sexy Banchie, John Foster III. BEST BRED, OWNED: Dale-Pride Specs Betz, Kurt Hostetter.

### Youth Show

WINTER CALF: 1. Windy-Knoll-View, Kyle Burdette; 2. Mu-Ke Jubilant Mattie, Ronda E. Mummah; 3. Pineybrook Inspiration Lucy. FALL CALF: 1. Tower Vue Mandingo Dream, Craig H. Walton; 2. Windy-Knoll-View SWD.

## ★ SPRING SALE ★

FREE REPLACEMENT & UNLIMITED MILEAGE

The Nationwide **Jetzon**

Passenger Tire Warranty

A UNIQUE warranty concept, originated in 1964 and still unmatched by any other brand...

UNIQUE because it covers tires that are unserviceable for almost any reason, including road hazards such as unreparable punctures, cuts and breaks;

UNIQUE because replacement is made FREE during the first 50% of treadwear;

UNIQUE because there is no time or mileage limitation; UNIQUE because it is honored by Jetzon distributors throughout the country;

UNIQUE because there is no cumbersome record keeping required;

UNIQUE because it is not restricted to the original purchaser.

### STEEL BELTED RADIAL REVENGER M&S

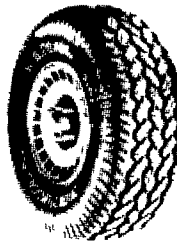
- 2 Steel Belts
- Polyester Body Plys
- Raised White Letters
- M&S Rating
- Serrated Black Letters On Blackwall Side

55,000 Miles



Size	Price
P175/70SR13	\$52.00
P185/70SR13	\$54.00
P185/70SR13	\$59.00
P185/70SR14	\$57.00
P195/70SR14	\$60.00
P205/70SR14	\$61.00
P215/70SR14	\$67.00
P225/70SR14	\$69.00
P215/70SR15	\$70.00
P225/70SR15	\$72.50
P235/70SR15	\$75.00
P255/70SR15	\$78.00
P205/80SR13	\$59.00
P215/80SR14	\$64.00
P235/80SR14	\$70.00
P245/80SR14	\$74.00
P235/80SR15	\$78.00
P245/80SR15	\$80.00
P225/80SR15	\$83.00
P275/80SR15	\$84.00

### REVENGER RV RADIAL M&S



Size	Ply	Price
30x9.50R15	C	\$ 90.00
10R15	C	\$ 99.00
31x11.50R15	C	\$107.00
31x10.50R16.5	D	\$108.00
33x12.50R15	C	\$118.00
33x12.50R16.5	D	\$130.00

• Raised Outline White Letters

### ULTRA QUAD + TOURING TIRE

JETZON ULTRA-PREMIUM WARRANTY

Radial Construction



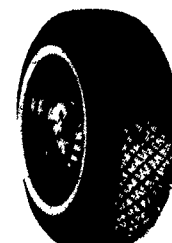
Polyester Cord  
2 Steel Belts  
65,000 Miles

Free Replacement: 100% for Materials and Workmanship  
50% for Road Hazard

Size	PRICE
WHITEWALL	
P185/70R14	\$56.00
P205/70R14	\$62.00
P215/70R14	\$65.00
P215/70R15	\$67.00
P225/70R15	\$71.00
P235/70R15	\$72.00
P255/70R15	\$78.00
BLACKWALL	
P175/70R13	\$49.50
P185/70R13	\$51.00
P195/70R14	\$56.00

### GRANDEUR PREMIUM ALL SEASON STEEL RADIAL

Radial Construction



Polyester Cord  
2 Steel Belts  
55,000 Miles

50% Free Replacement Warranty for Materials, Workmanship and Road hazard

Size	Price
P155/80R13	\$45.00
P165/80R13	\$46.00
P175/80R13	\$48.00
P185/80R13	\$51.00
P185/75R14	\$52.00
P195/75R14	\$55.00
P205/75R14	\$58.00
P215/75R14	\$62.00
P205/75R15	\$57.00
P215/75R15	\$64.00
P225/75R15	\$66.00
P235/75R15	\$69.00

### REVENGER II RADIAL A/S

2 Steel Belts Polyester Cord

Radial Construction  
M & S Rated



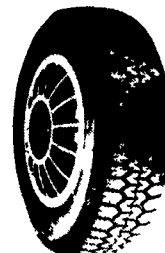
Size	Ply	Price
OUTLINE BLACK LETTERS		
LT225/75R16	D	\$79.50
LT245/75R16	E	\$89.00
LT215/85R16	D	\$77.00
LT235/85R16	E	\$90.00
8.75R16.5	D	\$84.00
9.50R16.5	D	\$94.00
OUTLINE WHITE LETTERS		
30x9.50R15	B	\$79.50
31x10.50R15	B	\$87.50

### STEEL BELTED METRIC RADIAL

Polyester Cord  
2 Steel Belts  
M&S Rated

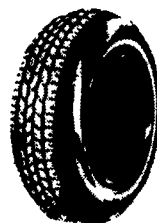
50% Free Replacement Warranty for Materials, Workmanship and Road Hazard

45,000 Miles



Size	Price
155R12	\$32.00
145R13	\$34.00
155R13	\$35.00
165R13	\$38.00
175R14	\$41.00
185R14	\$43.00
165R15	\$40.00
175/70R13	\$39.00
185/70R13	\$40.00
185/70R14	\$43.00
195/70R14	\$45.00
205/70R14	\$47.00

### DORAL ALL SEASON



35,000 Miles

Size	Price
P155/80R13	\$31.00
P175/80R13	\$34.00
P185/80R13	\$35.00
P185/75R14	\$38.00
P195/75R14	\$39.00
P205/75R14	\$39.50
P205/75R15	\$41.00
P215/75R15	\$43.50
P225/75R15	\$45.00
P235/75R15	\$48.00

ALL PRICES INCLUDE MOUNTING, BALANCING, NEW VALVES & TIRE DISPOSAL

# HURST TIRE SERVICE

1 Mile West of Blue Ball on Route 322

(717) 354-4931

Hours of Operation: Mon-Fri 8:00am-6:00pm, Sat 8:00am-5:00pm, Sun 9:00am-5:00pm

