

Central & S.E. Virginia Livestock
Lynchburg, VA
March 30, 1992

SLAUGHTER CATTLE 113 HEAD - STEADY-1.00 LOWER COWS CUTTER & BONING UT. 1-3 44.00 - 50.00 BREAKING UT. & COMM. 2-4 47.00 - 50.50 CANNER AND LOW CUTTER 1-2 40.00 - 44.00

SLAUGHTER BULLS 17 HEAD - STEADY BULLS Y.G. 1-2, 900-1300 LB. 55.50 - 60.00 Y.G. 1-2, 1300-1600 LB. 55.00 - 62.75 Y.G. 1-2, 1600 LBS. & OVER 58.00 - 63.00

FEEDER CATTLE 692 HEAD STEERS & HEIFERS STEADY. BULLS STEADY - 3.00 LOWER.

STEERS MEDIUM 1 LARGE 1 SMALL 1 MED & LARGE 2 200-300 100.00-111.50 - 86.00- 93.00 95.00-103.00 300-400 103.00-106.00 102.00-111.50 87.00- 98.50 91.00-105.50 400-500 90.50- 94.25 96.75- 97.75 79.00-90.00 83.00- 93.50 500-600 - 84.50 72.00-75.50 82.00- 83.00

HOLSTEIN STEER MED & LARGE 2 300- 500 73.50- 77.00 500- 700 64.50-75.00

HEIFERS MEDIUM 1 LARGE 1 SMALL 1 MED & LARGE 2 200-300 --- 85.00- 91.00 300-400 - - 72.00- 73.50 75.00- 87.00 400-500 74.75- 84.00 - 71.00- 74.75 69.50- 79.50 500-600 65.75- 77.50- 65.00- 67.00 - 600-700 67.00- 72.00 67.00- 72.50 60.00- 65.00 64.00- 67.25

BULLS MEDIUM 1 LARGE 1 SMALL 1 MED & LARGE 2 200-300 99.50-112.00 - 85.00-91.00 98.50 300-400 84.00- 99.00 - 79.50- 87.00 85.00-100.00 400-500 82.00- 92.00 - 72.50- 82.00 77.00- 88.00 500-600 74.75- 76.50 80.50- 81.00 69.00- 71.00 - 600-700 69.00- 74.00 - - -

BABY CALVES RETURNED TO FARMS 8 HEAD NEWBORN TO 4 WKS OLD 115.00-123.00 PER HEAD.

***** THE FOLLOWING ARE STATE GRADED FEEDER CATTLE SALES *****

LYNCHBURG 30-MAR-92 STEERS & HEIFERS STEADY 3.00 LOWER.

FEEDER CATTLE 189 HEAD STEERS MEDIUM 1 LARGE 1 SMALL 1 MED & LARGE 2 300-400

97.00-106.00 97.00-106.00 - - 400-500 93.25-101.00 93.25-101.00 - 85.00- 87.50 500-600 85.00- 90.75 85.00- 90.75 - 82.00- 84.50 600-700 78.50- 82.00 78.50- 82.00 - 75.00

HEIFERS MEDIUM 1 LARGE 1 SMALL 1 MED & LARGE 2 300-400 76.50- 84.75 76.50- 84.75 - 75.00- 86.00 400-500 76.00- 84.50 76.00- 84.50 - 76.50- 85.00 500-600 69.25- 77.75 69.25- 77.75 - 74.50- 82.25 600-700 65.00- 69.75 65.00- 69.75 - -

***** END OF STATE GRADED FEEDER CATTLE SALES *****

S.E. Virginia Livestock
Smithfield, VA
April 1, 1992

(SOUTH SIDE NOT AVAILABLE AT THIS TIME)

SLAUGHTER HOGS 155 HEAD - NO TRENDS REPORTED. SOWS U 1-3 300-500 LBS 32.10 US 1-3 500 LBS & OVER 32.50 BOARS 28.70-28.80 SMOOTH LIGHT BOARS 225-250 LBS 31.25

SLAUGHTER CATTLE 39 HEAD - NO TRENDS REPORTED.

SLAUGHTER STEERS AND HEIFERS 14 HEAD STEERS; CHOICE 2-3 1000-1150 LBS 68.00-69.50 SELECT 2-3 1100 LBS & OVER 64.00-67.50

SLAUGHTER COWS 24 HEAD CUTTER & BNG.UT. 1-3 43.00-46.00 BRKG.UT & COMM. 2-4 44.00-48.00 CANNER & LOW CUTTER 1-2 ---

FEEDER CATTLE 48 HEAD - TOO FEW TO REPORT ANY PRICES.

Shenandoah Valley Livestock

Harrisonburg, Va.
March 28, 1992

Report supplied by auction

STEERS: M&L-1 300-500 LBS. 88.00-102.00; 500-700 LBS. 76.00-94.00; 700-1000 LBS. 69.00-77.00; HOLSTEINS 56.00-80.25.

S-L&M&L-2: 300-500 LBS. 85.00-93.50; 500-700 LBS. 74.00-83.50. FEEDER BULLS: 300-500 LBS.

85.00-95.50; 500-700 LBS. 70.00-79.50; 700-1000 LBS. 58.50-64.00.

HEIFERS: 300-500 LBS. 76.00-85.00; 500-700 LBS. 69.00-78.00; 700-800 LBS. 68.00-70.00.

S-L&M&L-2: 300-500 LBS. 74.50-82.00; 500-700 LBS. 66.00-72.50. STOCK COWS: BEEF SPRINGERS 550.00-800.00; PAIRS 650.00-1100.00; BABY CALVES 50.00-165.00 HEAD, 75-1.30 WGHT.

SLAUGHTER COWS UTILITY AND COMMERCIAL 2-4 48.75-53.00; CANNERS AND CUTTERS 1-3 41.75-48.50.

SLAUGHTER BULLS: 55.00-63.75. LAMBS: BLUE O CHOICE AND PRIME, 74.50; BLUE O SPRINGS 82.50; RED O CHOICE 74.00; FEEDER LAMBS CHOICE 76.00; SLAUGHTER EWES 32.00-33.50; HEAD EWES 36.00-55.00.

SOWS: 1-3 25.00-29.00. BOARS: 22.50.

SLAUGHTER CALVES: 250-500 LBS. 60.00-72.50.

Frederick Livestock Auction

Frederick, Md.
March 30, 1992

Report supplied by Auction

SLAUGHTER COWS: 75 HD. STEADY PRICES. UTILITY 47.00-50.00; HIGH DRESSING TO 51.00; LOW DRESSING 45.00-47.00; CANNERS 43.00-47.00; SHELLY 43.00 DOWN.

BULLS: YG#2 1300-1500 LBS. 57.00-59.50; 1 LOW DRESSING AT 53.00.

STEERS: 1 STANDARD AT 59.00. HEIFERS: COMMERCIAL TO 53.50.

VEAL CALVES: 2 CHOICE 200-350 LBS. 108.00-109.00; GOOD 150-250 LBS. 75.00-91.00; CULLS 85-115 LBS. 79.00-91.00; 50-80 LBS. 70.00-80.00; WEAK/ROUGH 65.00 DOWN.

FARM CALVES: 10.00-20.00 HIGH-ER. HOLSTEIN BULLS #1 85-120 LBS. 130.00-148.00, FEW TO 155.00; #2 80-110 LBS. 95.00-125.00; HOLSTEIN HEIFERS #1 95-125 LBS. 150.00-170.00; #2 80-110 LBS. 95.00-145.00; BEEF X BULLS AND HEIFERS 120.00-167.00.

BUTCHER HOGS: 20 HEAD, 1.25 LOWER. US#1&3 215-260 LBS. TO 38.00; 1 LOT 211 LBS. AT 36.25; FEW 270-300 LBS. 35.00.

SOWS: FEW OFFERED.

BOARS: 350 LBS. TO 26.00. STOCK CATTLE: LIGHT RUN. STEERS: FEW OFFERED. 600-800 LBS. 67.00-74.00; FEW HOLSTEINS 400 LBS. 80.00-84.00.

HEIFERS: 300-500 LBS. TO 73.50. BULLS: 1 600 LB. AT 82.00.

DAIRY REPLACEMENTS: 2 HOLSTEIN SPRINGERS 750.00-800.00.

SHEEP AND LAMBS: NONE OFFERED.

GOATS: SMALL KIDS TO 28.00. PIGS AND SHOATS: BY THE HEAD 25-40 LBS. 16.00-25.00; 45-60 LBS. 25.00-30.00; 1 LOT 95 LBS. AT 34.00.

STOCK BOARS: 230 LBS. TO 31.50.

Oklahoma City Feeder Cattle

April 1, 1992

Compared with last week: Feeder steers over 700 lbs. firm to \$2.00 higher; heifers over 500 lbs. \$1.00-\$3.00 higher, most advance on stockers. Lighter weight steers and heifers steady. Quality of supply average to attractive with average to full weigh conditions. Market opened on a steady note but became a strong affair by noon Monday. Buyers remain aggressive for stocker cattle as recent frost damage to wheat has put several farmers into a graze out program. Despite very good stocker demand buyers are cognizant of market limitations this year and are striving to keep prices at reasonable levels. Current prices on 450-650 lb. stocker steers are \$10.00-\$15.00 per cwt. below this time a year ago; stocker heifers 450-550 lbs. \$13.00-\$16.00 lower. Slaughter cows \$1.00-\$2.00 lower. Slaughter bulls steady. Receipts this week 10,350; last week 8,197; last year 7,409. Supply includes 71 percent yearlings; 19 percent calves and stockers under 600 lbs.; 10 percent slaughter cows and bulls. Bulk price ranges follow with weighted average in ().

Feeder Steers: Medium and Large Frame 1, 400-450 lbs. \$107.00-\$114.75 (\$112.39); 450-500 lbs. \$101.00-\$108.50 (\$104.42); 500-550 lbs. \$94.00-\$101.00 (\$98.75); 550-600 lbs. \$90.00-\$96.50 (\$91.84); 600-650 lbs. \$84.00-\$87.00 (\$85.32); 650-700 lbs. \$80.75-\$83.75 (\$82.36); 700-800 lbs. \$77.50-\$82.25 (\$80.05); 800-900 lbs. \$74.00-\$79.75 (\$76.55); 900-1000 lbs. \$72.50-\$75.25 (\$73.52). Large Frame 2 Holsteins, 300-400 lbs. \$90.00-\$93.00 (\$91.75); 400-500 lbs. \$84.00-\$87.00 (\$85.35); 600-700 lbs. \$71.00-\$75.25 (\$71.50); 700-800 lbs. \$65.00-\$70.50 (\$67.50); 800-875 lbs. \$64.25-\$68.00 (\$66.50).

Feeder Heifers: Medium and Large Frame 1, 300-400 lbs. thin \$96.50-\$106.50 (\$104.48); 400-500 lbs. thin \$88.75-\$97.50 (\$93.60); 500-600 lbs. \$82.00-\$87.00 (\$85.13); 600-700 lbs.

\$76.00-\$81.75 (\$78.80); 700-800 lbs. \$74.00-\$77.50 (\$75.71); 800-900 lbs. \$71.75-\$75.00 (\$73.42).

Slaughter Cows: closing levels: Cutter, Boning and Breaking Utility Y.G. 1-4, average dressing \$47.00-\$50.00; high dressing \$49.00-\$52.00.

Slaughter Bulls: Y.G. 1 1300-2400 lbs. average dressing \$60.50-\$63.00; high dressing \$64.75-\$68.00.

Aberdeen Sales Company, Inc.

Complete Auction & Appraisal Service
Churchville, Md.

Wednesday, April 1, 1992

SLAUGHTER STEERS: MARKET STEADY. CHOICE 2-4 1100-1400 LBS. 72.50-76.50; SELECT & LOW CHOICE 1000-1500 LBS. 69.00-73.50; HOLSTEINS HI CHOICE & PRIME 1250-1400 LBS. 66.00-68.50; CHOICE 1200-1500 LBS. 64.00-66.50; SELECT ALL WEIGHTS 54.00-59.00.

SLAUGHTER HEIFERS: MARKET STEADY. CHOICE & PRIME 950-1300 LBS. 72.00-75.00; SELECT ALL WEIGHTS 900-1400 LBS. 64.00-69.00.

COWS: MARKET 2.00 LOWER. BRK. UT. & COMM. 2-4 BULK 46.00-49.50; HI DRESSING 50.00-55.50; CUTTER & BON. UT. 47.00-49.00; HI DRESSING 51.00-53.00; CANNER & CUTTERS 41.00-47.00; LOW DRESSING 40.00-DOWN.

BULLS: MARKET STEADY. ALL WEIGHTS 1100-1900 LBS. 57.00-71.00. VEAL CALVES: MARKET STEADY. CHOICE & PRIME 200-400 LBS. 85.00-93.00; HI GOOD & LOW CHOICE ALL WEIGHTS 80.00-91.00.

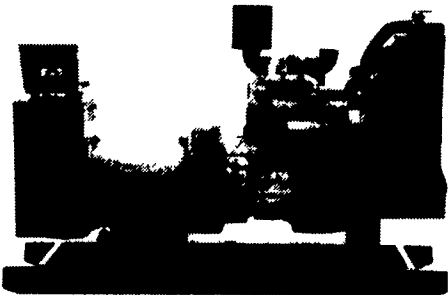
FARM CALVES: MARKET STEADY. HOL. BULLS 100-125 LBS. 135.00-162.00; HOL. BULLS 85-95 LBS. 105.00-133.00; HOL. HEIFER CALVES 100-120 LBS. 149.00-176.00; SMALL FRAME 70-105 LBS. 75.00-115.00; SLAUGHTER CALVES ALL WEIGHTS 65.00-86.00.

FEEDER CATTLE: MARKET 3.00 HIGHER. BULLS & STEERS 400-900 LBS. 69.00-97.00; HEIFERS 300-700 LBS. 59.00-78.00.

LAMBS: MARKET 5.00 LOWER. CHOICE & PRIME 90-110 LBS. 65.00-73.00; LIGHTER LAMBS 80.00-93.00; EWES - HEAVY 24.00-30.00; EWES - LIGHT 33.00-40.00.

GOATS: MARKET STEADY. HOGS: MARKET 1.00 LOWER. 210-250 LBS. 37.00-40.00; 255-300 LBS. 33.00-38.00; SOWS - HEAVY 32.00-36.00; SOWS - LIGHT 29.00-33.00; BOARS ALL WEIGHTS 21.00-27.00.

GENERATORS



DIESEL
L.P. GAS
P.T.O.
NEW & USED

SPECIALIZING IN COMPLETE
AUTO START STANDBY POWER SYSTEMS

For Sales and Service Call The Manufacturer

MARTIN ELECTRIC PLANTS

280 Pleasant Valley Rd., Ephrata, PA 17522-8620

Tel: 717-733-7968 Fax: 717-733-1981

BOYDELL FARMS

302 Iona Rd., Lebanon, PA 17042
Phone: 717-272-8943

DISTRIBUTORS FOR:
NEW \$69.00
2516-2339 Unit



ALFALFA

84 VWAP - Vernal
Wetfoot - Erie

TIMOTHY, TORO, CLIMAX
TIMOTHY AND CLOVERS

FOR EARLY DISCOUNT ON VARIOUS ITEMS, PLEASE CALL

WHOLESALE & RETAIL

FERTILIZER

10-20-20 \$176 Per Ton
Less 4% Bulk

Triple 10-10-10 \$130 Per Ton
Less 4% Bulk

BALER TWINE 7200'-9000'-10,000'
Plus Plastic Twines

Oats - Hercules, Ogle

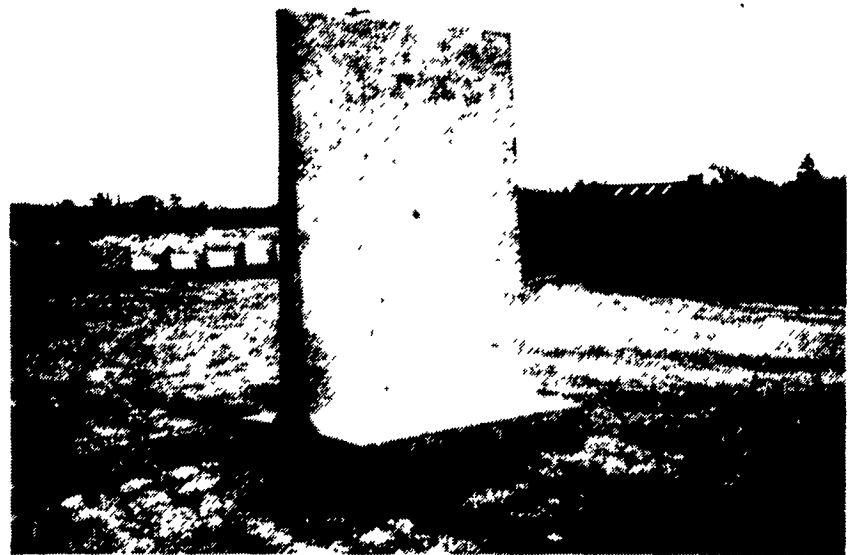
SOYBEANS

Resnick
\$9.75 Bu.

3940 - 3790 Pella NC-Shore
Experiment 354

Ensiler Oats Peas Combination
Pecal - High Tonnage For Early
Silage or Green Chop

**T-WALL BUNKER
SILO SECTIONS**



Also Available In A-Frame Panels

Other Products:

- H & J Bunks
- Concrete Hog Penning
- Hog & Cattle Slats
- Concrete Post & Beams
- Bunker Silos

Give us a call for more information on hog, beef, dairy and heifer barns.



477 East Farmersville Rd.
New Holland, PA 17557
(717) 385-2361

