

Lapp Open House Held

WHITE HORSE (Lancaster Co.)—The open house at Lapp's Barn Equipment featured slides and videos from Russian farms and a special advice on maintenance of equipment. Featured speaker was Dr. Gordon Schwemmer, representative from J-Star.

"Let's fix it before it's broken," Schwemmer said. "The preventive

maintenance done daily, monthly or semi-annually is the effective way to prevent large repair bills and down-time in the busy season.

Schwemmer said the most important maintenance step is to grease all the moving parts and keep oil levels full on the gear boxes. Proper maintenance can cut down on the high expenses asso-

ciated with repairs.

For example, on silo unloaders be sure the silage is properly distributed and make sure the unloader is raised to the top for filling. Also the proper cut length of stems and proper moisture are also important.

"General daily care is what you need to do," he said.

The three-day also featured a free lunch and large door prizes, including a first prize of \$2,000

worth of Jamesway parts. More than 400 persons attended the open house.

New Agreement For Animal Health

HARRISBURG (March 11) — Agriculture Secretary Boyd E. Wolff Wednesday announced that a new agreement between Pennsylvania State University, the University of Pennsylvania and the Department of Agriculture will provide better animal health diagnostic services to farmers.

Under the agreement, the two university laboratories, which are partially funded by the Pennsylvania Animal Health and Diagnostic Commission, and the Department's Summerdale laboratory will each provide complete diagnostic services, but will also specialize to avoid costly duplication.

Each laboratory brings to the system a unique capability based on its parent institution. In complex cases, lab technicians can consult with experts on the institution's staff.

Wolff, who chairs the Commission, said the three-lab system will

offer more complete services to producers.

"Under this arrangement Penn State will specialize in virology while the University of Pennsylvania will specialize in toxicology and the Department's Summerdale laboratory will handle most regulatory testing," Wolff said.

"Each laboratory has unique capabilities, but under the supervision of the Animal Health Commission, testing can be referred between labs so that diagnostic services can be more complete."

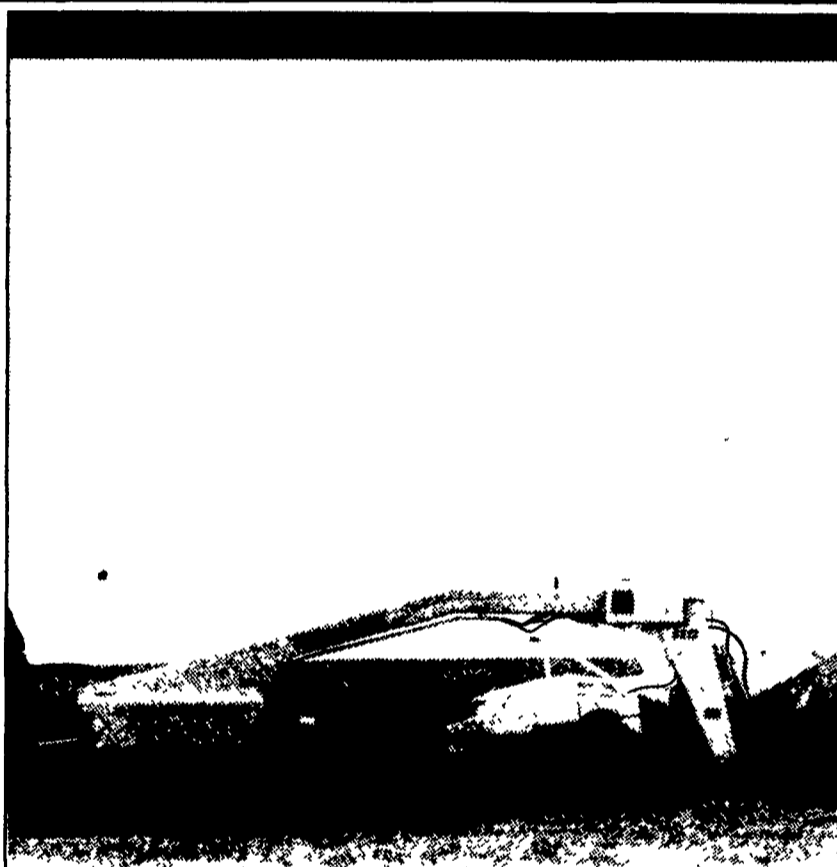
Information on available testing and a new fee structure will be mailed to potential users later this month. In the meantime, questions concerning laboratory services should be directed to the individual laboratories or to the Animal Health and Diagnostic Commission Office in Harrisburg (717) 782-2852.



Farmers gather around the mixing demonstration at Lapp's Barn Equipment.

See Your White-New Idea Dealer

- Columbus, NJ
Reed Brothers Equipment
- Airville
Farmers Equip. & Supply Inc.
- Altoona
Hines Equipment
- Bechtelsville
Miller Equip. Co.
- Bethel
Zimmerman Farm Service
- Bloomsburg
W.F. Welliver
- Canton
Wynne's Garage Inc.
- Carlisle
Carlisle Farm Service
- Chambersburg
Chambersburg Farm Service
- Cochranville
Stoltzfus Farm Service
- Cresson
Hines Equipment
- Dover
George N. Gross Inc.
- Easton
Fancy Furrow Farms Ag Equip.
- Eighty Four
Fields Implement Store
- Everett
Sollenbergers Equipment Inc.
- Gettysburg
Yingling's Implement Inc.
- Greencastle
Meyers Implements Inc.
- Honesdale
Marshall Machinery Inc.
- Indiana
Hulls Farm & Lawn Equip.
- Jersey Shore
Thomas L. Dunlap
- Klingerstown
Stanleys Farm Service
- Lebanon
Umbergers of Fontana
- Mifflintown
B S & B Repair
- Mill Hall
Dunkle & Grieb
- New Bethlehem
Hetrick Farm Supply
- New Tripoli
C.J. Wonsidler Bros.
- Oakland Mills
Peoples Sales & Service
- Quakertown
C.J. Wonsidler Bros.
- Quarryville
A.L. Herr & Bros. Inc.
- Somerset
Lincoln Supply & Equip. Co.



Cuts more than hay. Cuts time.

New Idea 5212 Disc Mower Conditioners cut a big 11'9" swath and condition with 9'6" intermeshing rolls...the widest disc mower conditioner available. You cut and condition lots of hay with each trip. And that means you cut time.

The 5212 is a wider version of our well-known 5209.

Because both the 5212 and 5209 use the New Idea modular disc cutterbar design, there's less downtime.

Routine maintenance is simple. And, although unlikely, repairs are a breeze, too.

Best of all, you'll find our disc mower conditioners are just one segment of our hay equipment line. Round balers, disc mowers, sickle mower conditioners, rakes and hay handling tools are all available through your White-New Idea dealer.



NEW IDEA
BY WHITE NEW IDEA

Made In America

SAV111001



FINEST QUALITY SEEDS AT COMPETITIVE PRICES

ALFALFAS
WL 317 WL 320 Vernal Buffalo

CLOVERS
Arlington Medium Red

HAY MIXES TO ORDER

SOYBEANS
Williams 82 Pella

FREE MIX AND INOCULATION FOR CLOVER AND ALFALFA

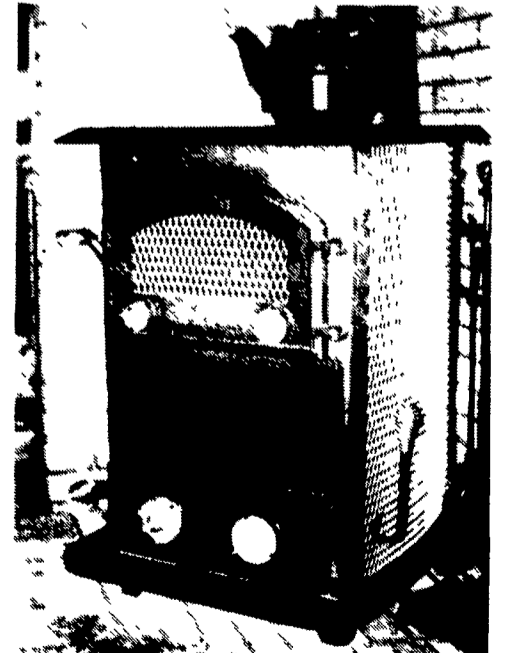
REIST SEED COMPANY

Finest Seeds (Since 1925)
Mount Joy, PA (717) 653-8078

D.S. MACHINE SHOP

238B Old Leacock Rd.,
Gordonville, PA 17529
717-768-3853

CUSTOM BUILT
WOOD & COAL STOVES



- LARGE GLASS DOORS
- ENERGY EFFICIENT

IN STOCK



— UPS Service —

