

# SAFEMARK SPRING BREAK



## NOW... GO RADIAL IN REAR TRACTOR TIRES

Get the pull of your life with

### MULTI-ANGLE RADIAL M/B

- Revolutionary 3-lug per pitch design improves traction and ride
- Computer designed "natural" shape casing improves tire body life
- Radial construction provides better traction, lower fuel and overall costs

**5 YEAR FIELD  
HAZARD  
WARRANTY**

SIZE	SALE PRICE
18.4 R 34 *	\$479.00
18.4 R 38 *	\$539.00
20.8 R 38 *	\$769.00
20.8 R 38 **	\$799.00
18.4 R 42 **	\$599.00



### MULTI-ANGLE

### MB

- Excellent drawbar pull with long-bar, short-bar lugs for improved traction.
- Designed for improved stability and roadability, plus reduced vibration
- Strong angle-braced lugs have self-cleaning design.
- High-strength polyester cord body and heavy duty rim shield help protect tire from damage.



SIZE AND DESCRIPTION	SALE PRICE
11.2-24 Tube Type 4 Ply	\$139.00
12.4-28 Tube Type 4 Ply	\$171.00
15.5-38 Tube Type 6 Ply	\$296.00
18.4-34 Tube Type 6 Ply	\$379.00
18.4-38 Tube Type 6 Ply	\$419.00
20.8-38 Tube Type 8 Ply	\$599.00

### SAFEMARK STEP UP TO QUALITY

#### SUPER SPORT AP RADIAL

- Excellent Off-Road Traction And Lug, Even Wear On The Highway
- Two Steel Belts For Strength And Stability
- Smooth Riding Polyester Radial Cord Plugs
- Wide, Flat Footprint Gives Positive Traction In All Positions

SIZE	PLY	PRICE
P20575 R14	SL	\$49
P21575 R15	SL	\$54
P23575 R15	SL	\$58
LT23575 R15	C	\$79
31x1050 R15	B	\$90
LT21585 R16	D	\$77
LT22575 R16	D	\$79
LT23585 R16	E	\$95
LT24575 R16	E	\$98



#### ECONOMY RADIAL

- All-Season Tread Design Fights Hydroplaning
- Double Steel Belts Protect Against Bruises And Punctures
- Distinctive Outline Black Lettering

WHITELINE SIZE	PRICE
P15580R13	\$29.00
P15580R13	\$32.00
P17580R13	\$34.00
P18580R13	\$35.00
P18575R14	\$37.00
P18575R14	\$38.00
P20575R14	\$40.00
P21575R14	\$43.00
P20575R15	\$41.00
P21575R15	\$44.00
P22575R15	\$46.00
P22575R15	\$46.00



#### SBR IV

- Two Tough Steel Belts For Puncture Resistance
- Polyester Cord Piles For Smooth Ride
- Distinctive Sidewall Styling For Premium Appearance

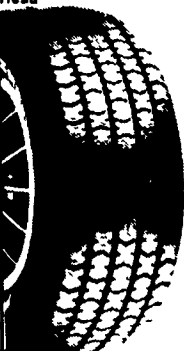
WHITELINE SIZE	PRICE
P15580R13	\$39.00
P16580R13	\$41.00
P17580R13	\$43.00
P18580R13	\$45.00
P18575R14	\$47.00
P18575R14	\$49.00
P20575R14	\$52.00
P20575R15	\$52.00
P21575R15	\$56.00
P22575R15	\$58.00
P23575R15	\$61.00



#### PACEMARK

- "SR" Speed Rated For Quality And Integrity
- M-S Rated For All Season Traction
- High Traction, High Mileage Tread Compound

OUTLINE WHITE LETTER SIZE	PRICE
P17570R13	\$55.00
P18570R13	\$56.00
P18570R14	\$59.00
P18570R14	\$62.00
P20570R14	\$65.00
P21570R14	\$69.00
P22570R14	\$72.00
P21560R14	\$65.00
P21565R15	\$75.00
P18560R15	\$62.00



#### BATTERY BARGAIN

**\$47.00**  
5-24 5-24F  
525 AMPS

- Higher cranking than conventional batteries
- Sizes to fit most domestic and import cars and light trucks

#### FARM TRACTOR BATTERY

**\$66.00**  
FC-30H  
560 AMPS

- Rugged high impact case and cover for vibration resistance



- Increased starting power
- Built to last-season after season
- Made in the USA

### Contact A Participating Dealer Listed Below

or  
(Call 1-800-PFA-TIRE for dealer nearest you)

**Adams**  
Mar-Bar Tire Service  
Hanover, PA 17331  
(717) 633-6412

**Huntingdon**  
Hutton Supplies  
Petersburg, PA 16669  
(814) 669-9345

**Yinglings Implement**  
Gettysburg, PA 17325  
(717) 359-4848

**Lancaster**  
Leola Tire Service  
Leola, PA 17540  
(717) 656-2574

**Blair**  
Rhode's Farm Supply  
Williamsburg, PA 16693  
(814) 832-2491

**Messick**  
Farm Equipment  
Lancaster, PA  
(717) 367-1319

**Bradford/Sullivan**  
Hiland Farm & Home Service  
Rome, PA 18837  
(717) 744-2371

**Lebanon**  
AM Tire Corp.  
Palmyra, PA 17578  
(717) 838-5491

**L.J. Cole & Sons**  
Towanda, PA 18848  
(717) 265-7556

**Lebanon Valley Implement Co., Inc.**  
Richland, PA 17087  
(717) 866-7518

**Centre**  
Dunkle & Grieb  
Centre Hall, PA 16828  
(814) 364-1421

**Lehigh Co.**  
Kermit K. Kistler  
Lynnport, PA 18066  
(215) 298-2011

**Chester/Delaware**  
S.G. Lewis & Sons  
West Grove, PA 19390  
(215) 869-2214

**Stoltzfus Farm Service**  
Cochranville, PA 19330  
(215) 593-2407/2408

**Millin**  
Miller-Lake, Inc.  
Belleville, PA 17004  
(717) 935-2335

**Clinton**  
Dotterer Equipment, Inc.  
Mill Hall, PA 17751  
(717) 726-3471

**Northampton/Monroe**  
Northampton Farm Bureau  
Tatamy, PA 18085  
(215) 759-3254

**Columbia**  
Steve Shannon Tire Co., Inc.  
Bloomsburg, PA 17815  
(800) 343-TIRE

**Northumberland**  
Rovendale Supply  
Watsonstown, PA 17777  
717-538-5521  
800-232-DALE

**Yost Tire & Auto Center**  
Benton, PA  
(717) 925-2821

**Schuylkill**  
Charles Snyder, Inc.  
Tamaqua, PA 18252  
(717) 386-5945

**Cumberland**  
Barrick Tire Sales  
Newville, PA 17241  
(717) 776-5762

**Somerset**  
Maple City Tire  
Meyersdale, PA 15552  
(814) 634-0545

**Erie**  
Mike's Auto Repair  
North East, PA 16428  
(814) 725-9091

**Union**  
Mifflinburg Farm Supply, Inc.  
Mifflinburg, PA 17844  
(717) 966-3114/3115

**Franklin**  
Forrester Farm Equip., LTD  
Chambersburg, PA 17201  
717-263-0705

**Washington**  
Canonsburg Supply & Equipment Co., Inc.  
Canonsburg, PA 15317  
(412) 746-2500

**Stoneham's**  
Waynesboro, PA 17268  
(717) 762-3614

**Bruce B. Gamble & Sons**  
Concord, PA 17217  
(717) 349-2670

**Wyoming Co.**  
J. Roberts & Son Tire Co.  
Meshoppen, PA 18630  
(717) 833-5582

**Fulton**  
Clugston Farm Equipment  
Needmore, PA 17238  
(717) 573-2215

**York Co.**  
Corn Hill Farm, Inc.  
Etters, PA 17319  
(717) 938-2012



## SAFEMARK

Division of Pennsylvania Farmers' Association  
Camp Hill, PA 17011

CALL TOLL FREE  
1-800-PFA-TIRE

For Dealer Nearest You

A Proud Tradition of Quality,  
Value and Service.

- QUALITY
- SERVICE

- DEPENDABILITY
- ECONOMY

**Now Serving  
NJ, NY & CT**